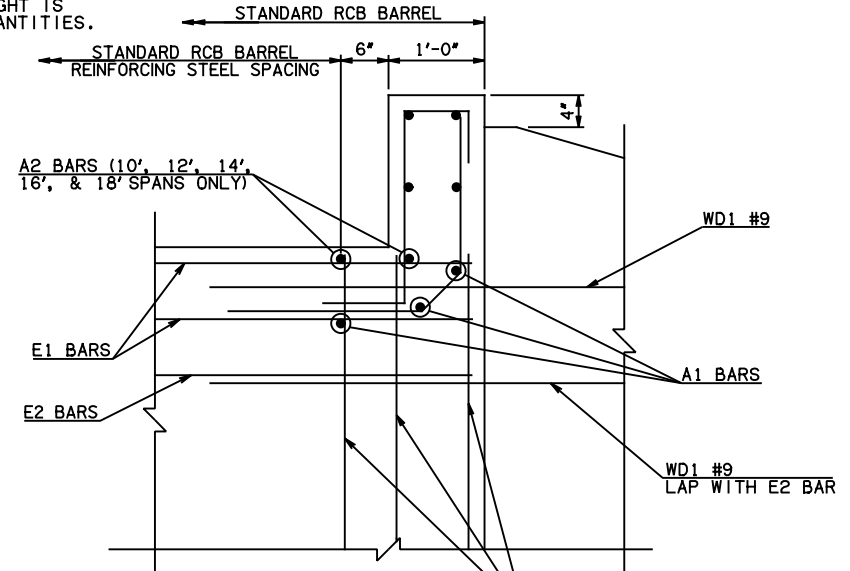


DESCRIPTION	REVISIONS	DATE

④ NOTE: TO CONSTRUCT ONE END SECTION AS SHOWN, THE FOLLOWING BARS ARE REQUIRED IN ADDITION TO THOSE CALLED IN THE RCB BARREL STANDARD:

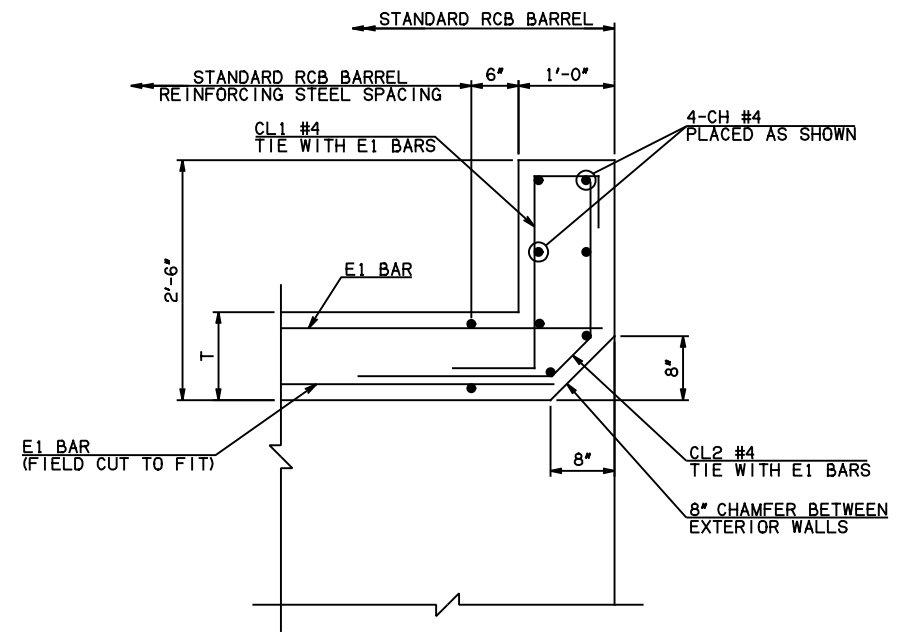
FOR 10', 12', 14', 16', & 18' SPANS
2-C2 BARS
2-C1 BARS

ADDITIONAL WEIGHT IS INCLUDED IN QUANTITIES.

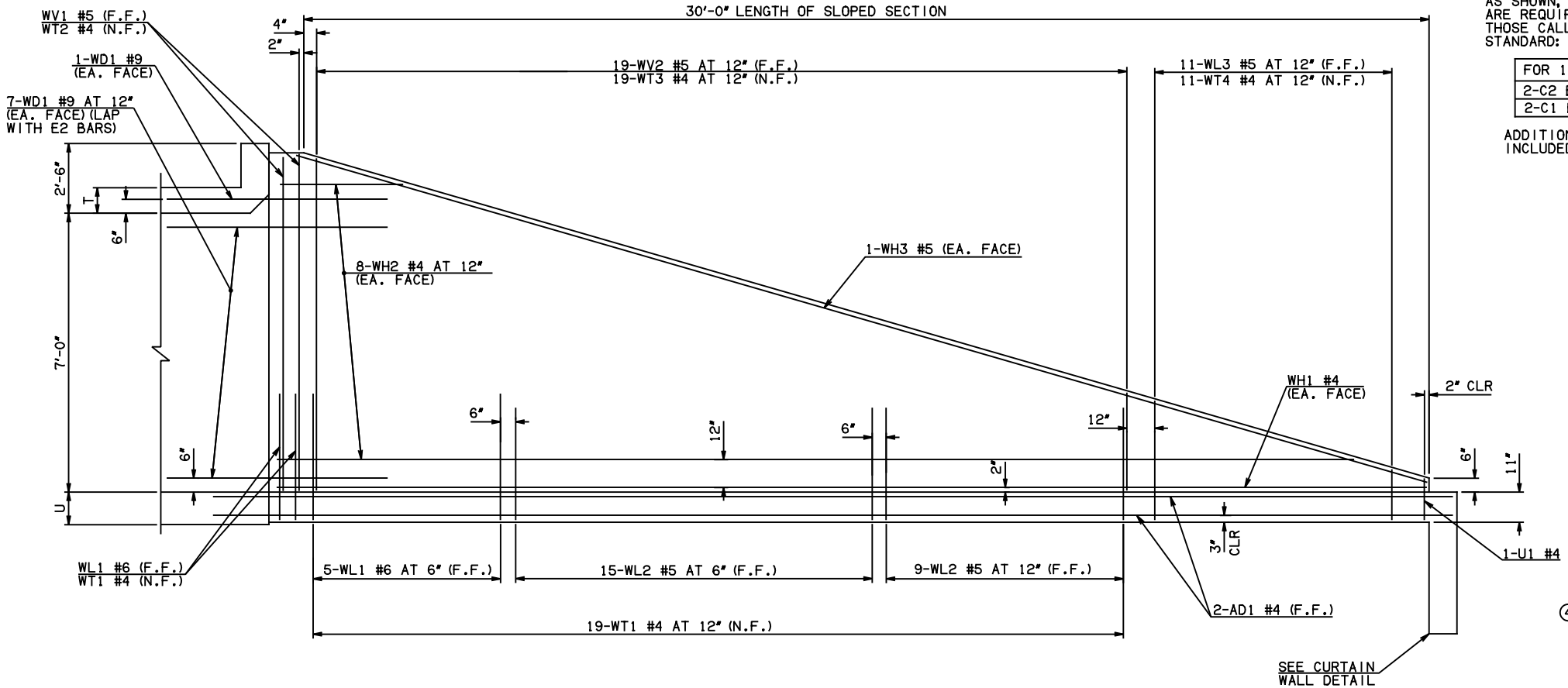


④ B2 WITH B1 BARS (F.F.)(10', 12', 14', 16', & 18' SPANS)
 C2 WITH C1 BARS (N.F.)(10', 12', 14', 16', & 18' SPANS)
 B2 WITH B1 BARS (N.F.)(5' & 8' SPANS)

HEADWALL DETAIL AT EXTERIOR WALL

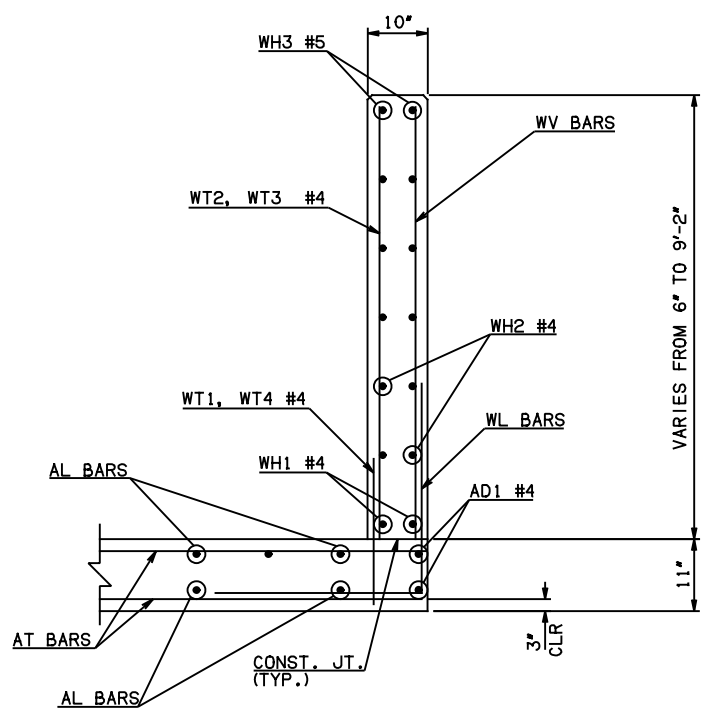


HEADWALL DETAIL AT MIDSPAN

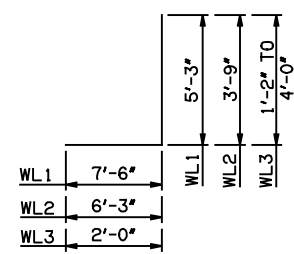
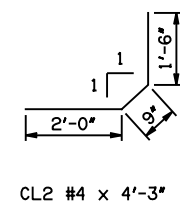
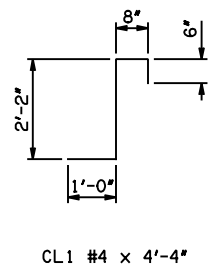


NOTE: F.F. = FAR FACE
 N.F. = NEAR FACE

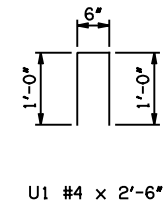
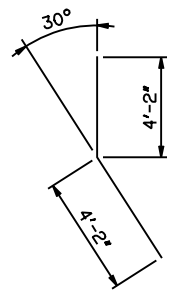
WING ELEVATION



TYPICAL SECTION THRU WING



WL1 #6 x 12'-9"
 WL2 #5 x 10'-0"
 WL3 #5 x 4'-7" AVG.



APPROVED BY BRIDGE ENGINEER *Scott J. Smith* DATE 4/2/10

OKLAHOMA DEPT. OF TRANSPORTATION
BRIDGE STANDARD (ENGLISH)
 RCB CULVERTS - END SECTION DETAILS
 SINGLE CELL - 7'-0" HEIGHT - 0°
 SHEET NO. 2 OF 2

2009 SPECIFICATIONS	RCB-E1-H7-0-2	01E
---------------------	---------------	-----

B-581E