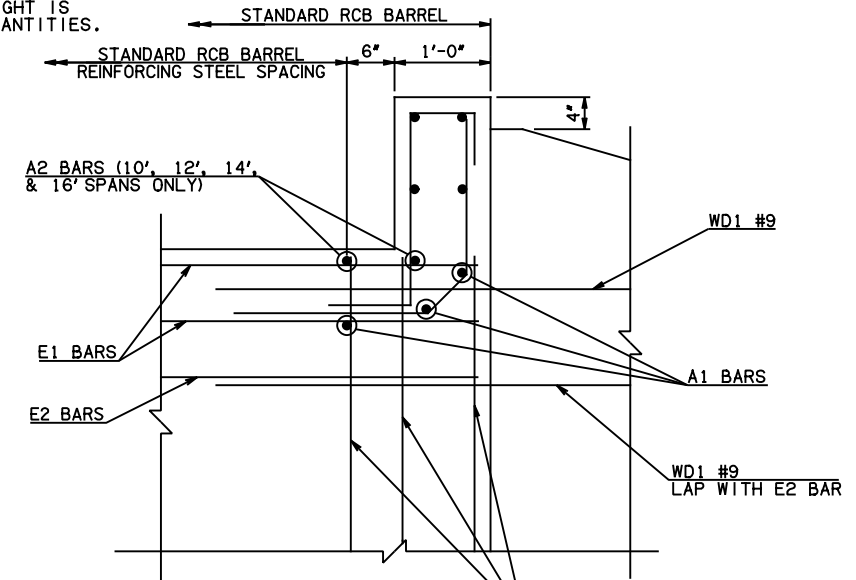


DESCRIPTION	REVISIONS	DATE

④ NOTE: TO CONSTRUCT ONE END SECTION AS SHOWN, THE FOLLOWING BARS ARE REQUIRED IN ADDITION TO THOSE CALLED IN THE RCB BARREL STANDARD:

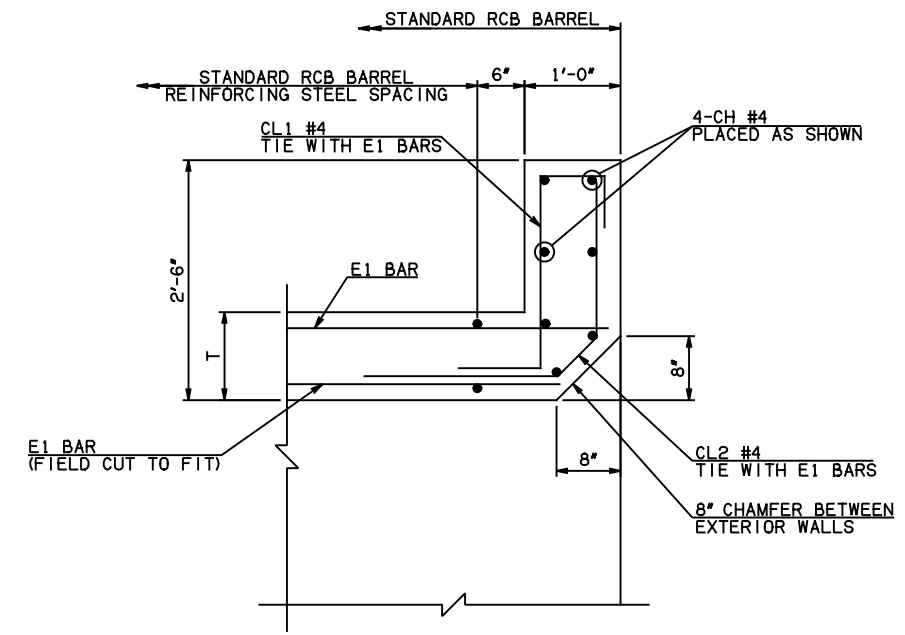
FOR 8' SPAN	FOR 10', 12', 14', & 16' SPANS
2-B1 BARS	2-C1 BARS
2-B2 BARS	2-C2 BARS

ADDITIONAL WEIGHT IS INCLUDED IN QUANTITIES.

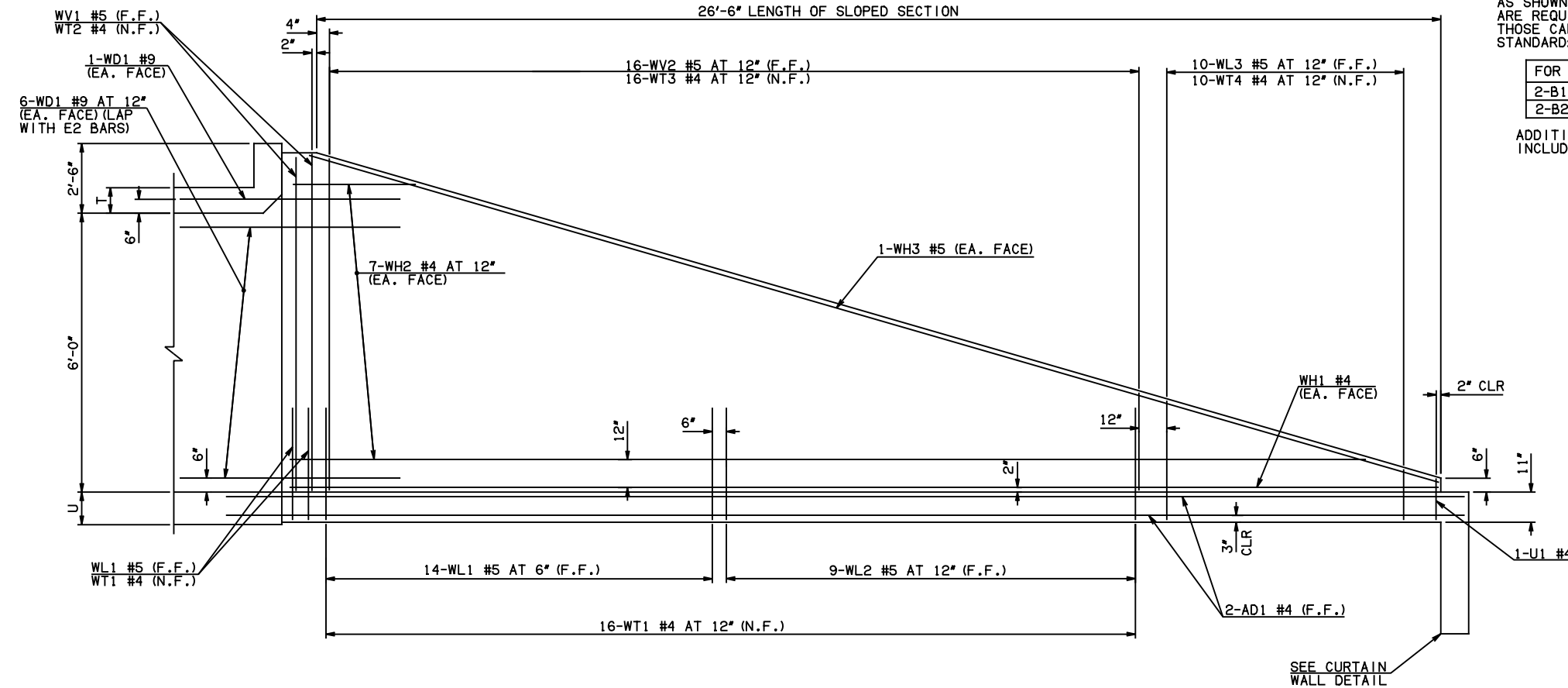


- ④ B2 WITH B1 BARS (F.F.) (10', 12', 14', & 16' SPANS)
- ④ C2 WITH C1 BARS (N.F.) (10', 12', 14', & 16' SPANS)
- B2 WITH B1 BARS (N.F.) (6' & 8' SPANS)

HEADWALL DETAIL AT EXTERIOR WALL

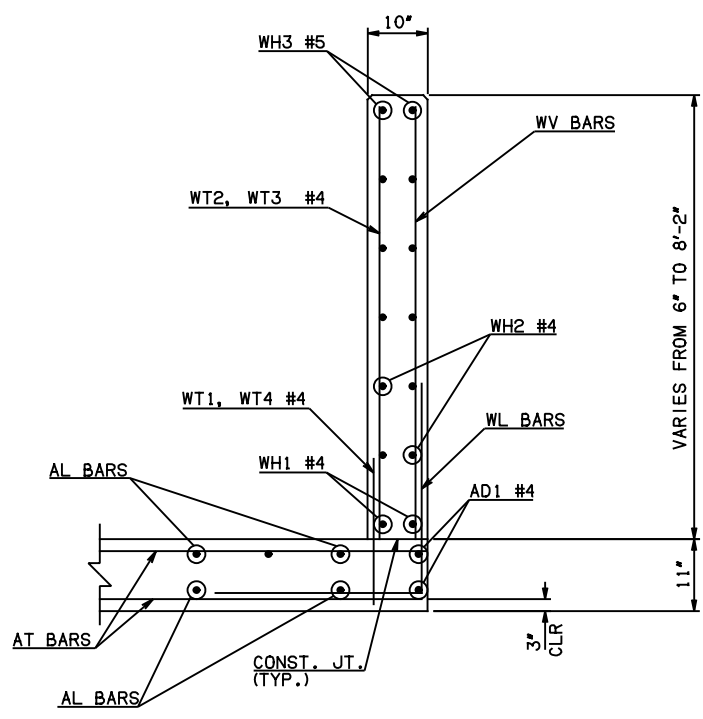


HEADWALL DETAIL AT MIDSPAN

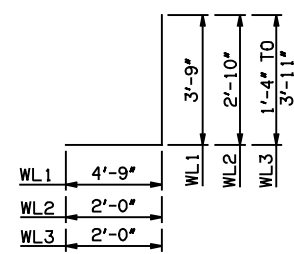
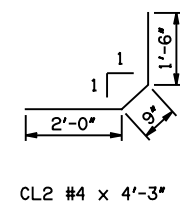
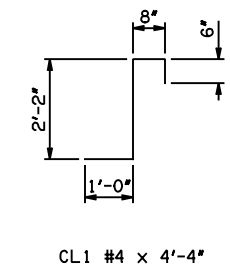


NOTE: F.F. = FAR FACE  
N.F. = NEAR FACE

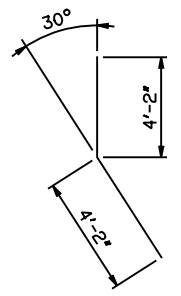
WING ELEVATION



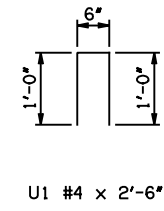
TYPICAL SECTION THRU WING



WL1 #5 x 8'-6"  
WL2 #5 x 4'-10"  
WL3 #5 x 4'-7 1/2" AVG.



WD1 #9 x 8'-4"



U1 #4 x 2'-6"

APPROVED BY BRIDGE ENGINEER *Scott J. Smith* DATE 4/2/10

**OKLAHOMA DEPT. OF TRANSPORTATION**  
**BRIDGE STANDARD (ENGLISH)**  
 RCB CULVERTS - END SECTION DETAILS  
 SINGLE CELL - 6'-0" HEIGHT - 0°  
 SHEET NO. 2 OF 2

2009 SPECIFICATIONS	RCB-E1-H6-0-2	01E
---------------------	---------------	-----

B-579E