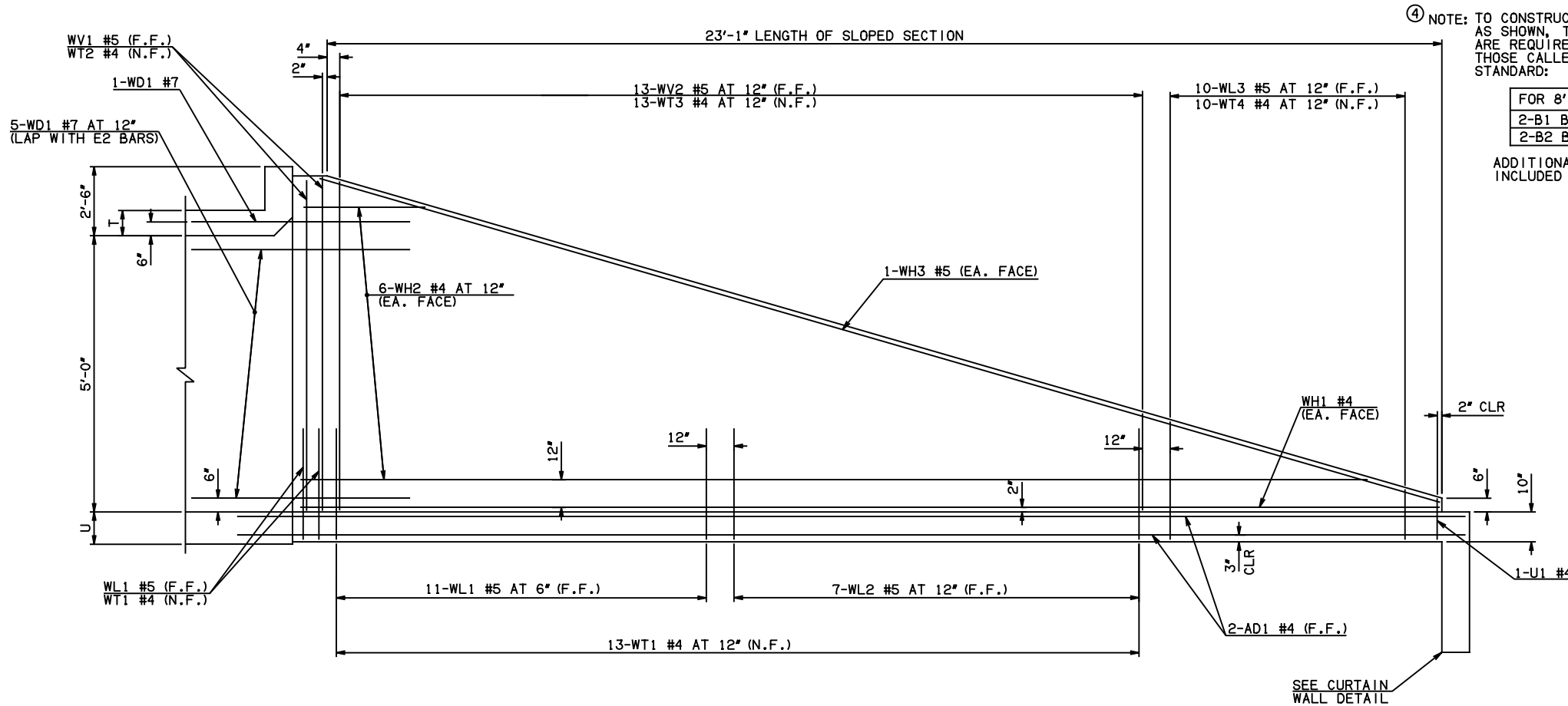
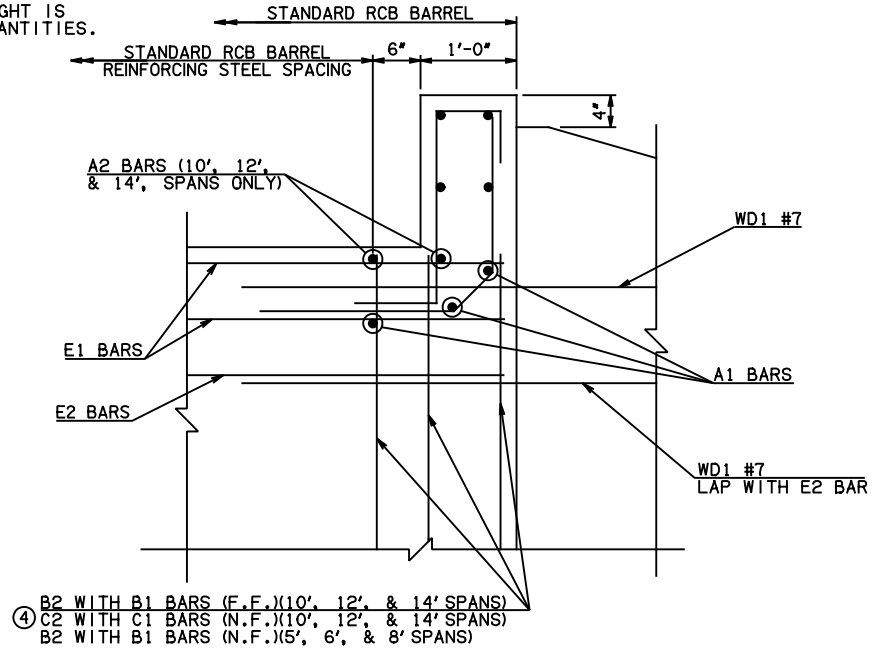


DESCRIPTION	REVISIONS	DATE



FOR 8' SPAN	FOR 10', 12', & 14' SPANS
2-B1 BARS	2-C1 BARS
2-B2 BARS	2-C2 BARS

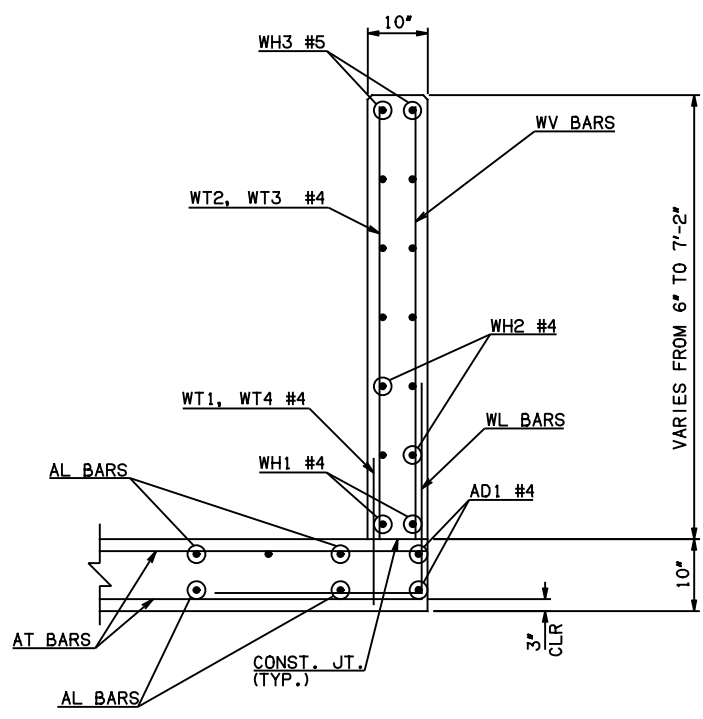
ADDITIONAL WEIGHT IS INCLUDED IN QUANTITIES.



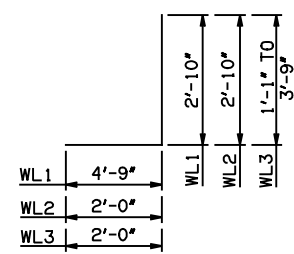
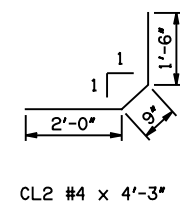
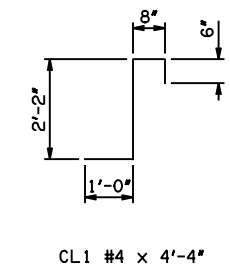
HEADWALL DETAIL AT EXTERIOR WALL

NOTE: F.F. = FAR FACE
N.F. = NEAR FACE

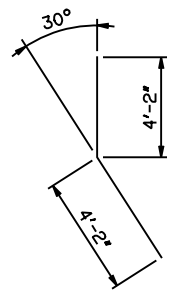
WING ELEVATION



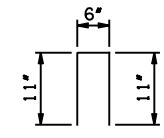
TYPICAL SECTION THRU WING



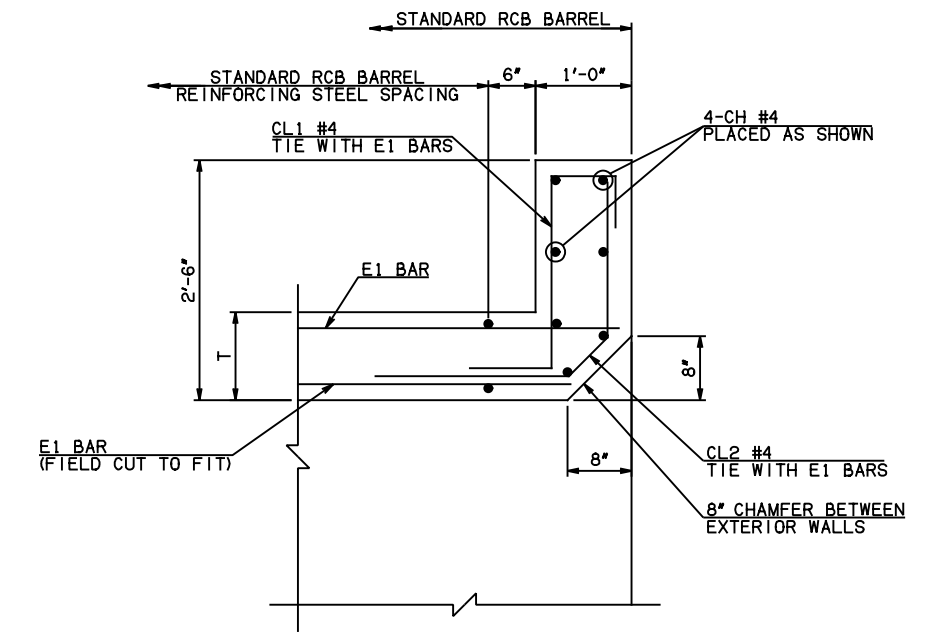
WL1 #5 x 7'-7"
WL2 #5 x 4'-10"
WL3 #5 x 4'-5" AVG.



WD1 #7 x 8'-4"



U1 #4 x 2'-4"



HEADWALL DETAIL AT MIDSPAN

APPROVED BY BRIDGE ENGINEER *Scott D. Smith* DATE 4/2/10

OKLAHOMA DEPT. OF TRANSPORTATION
BRIDGE STANDARD (ENGLISH)
 RCB CULVERTS - END SECTION DETAILS
 SINGLE CELL - 5'-0" HEIGHT - 0°
 SHEET NO. 2 OF 2

2009 SPECIFICATIONS	RCB-E1-H5-0-2	01E
---------------------	---------------	-----

B-577E