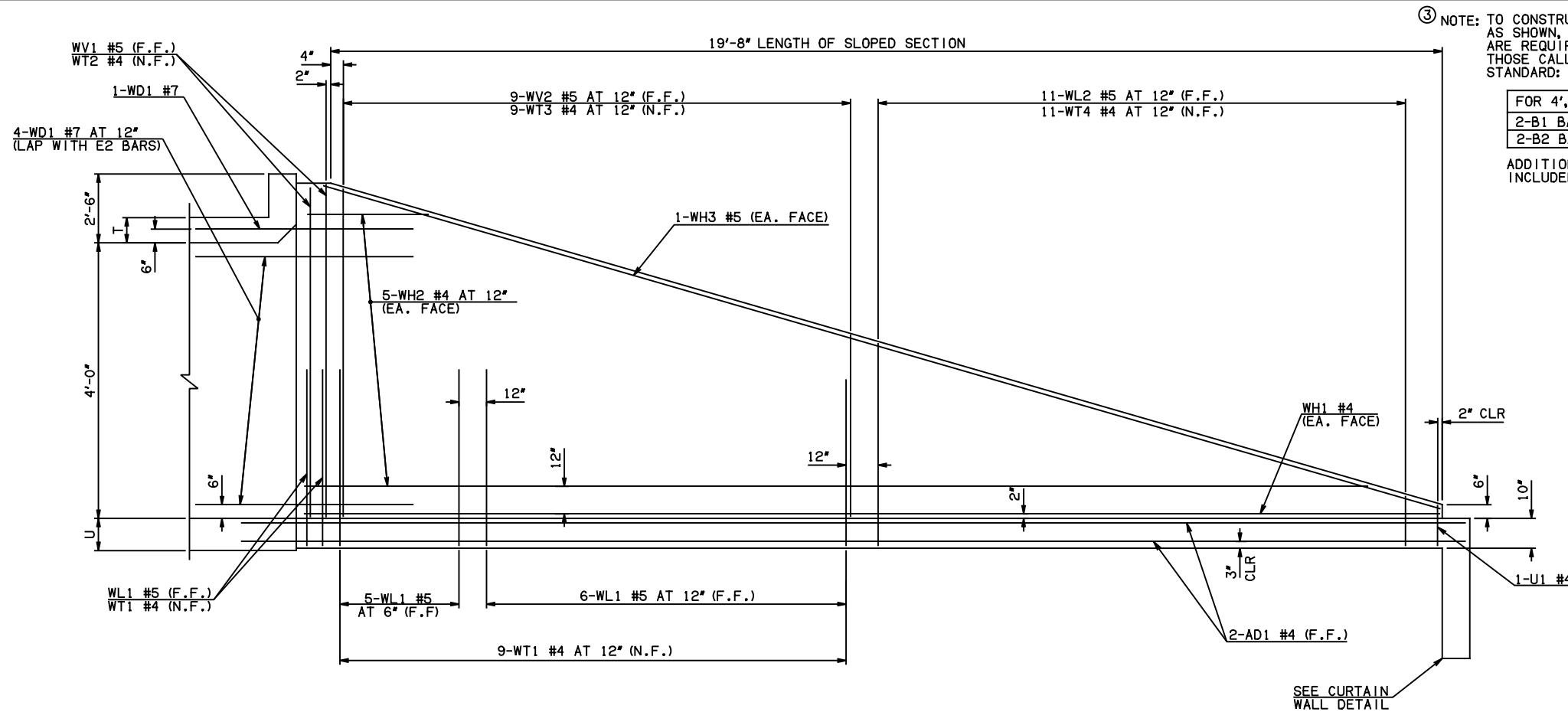


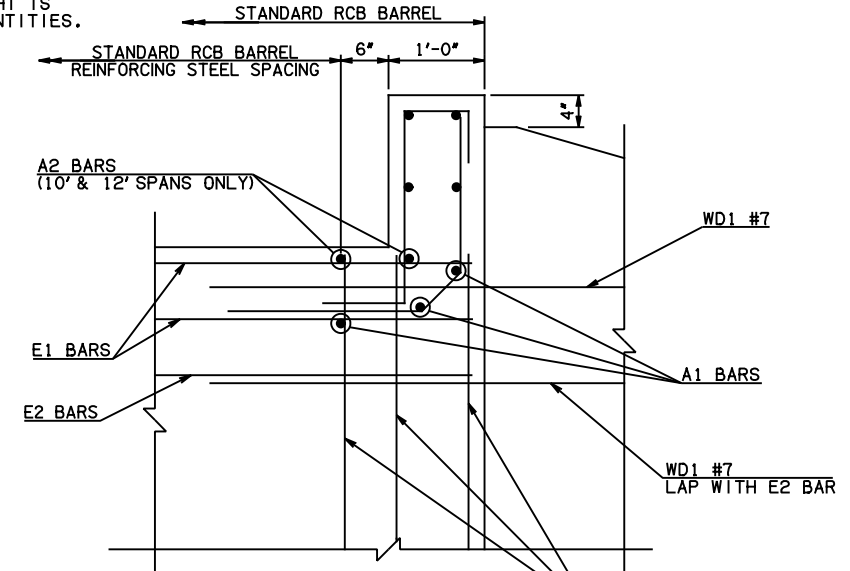
DESCRIPTION	REVISIONS	DATE



③ NOTE: TO CONSTRUCT ONE END SECTION AS SHOWN, THE FOLLOWING BARS ARE REQUIRED IN ADDITION TO THOSE CALLED IN THE RCB BARREL STANDARD:

FOR 4', 5', & 8' SPANS	FOR 10' & 12' SPANS
2-B1 BARS	2-C1 BARS
2-B2 BARS	2-C2 BARS

ADDITIONAL WEIGHT IS INCLUDED IN QUANTITIES.

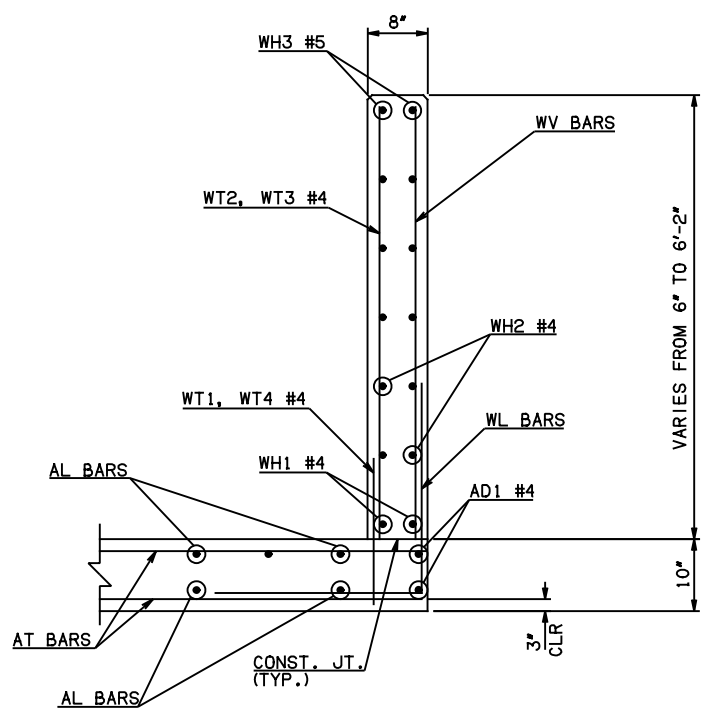


④ B2 WITH B1 BARS (F.F.) (10' & 12' SPANS)  
C2 WITH C1 BARS (N.F.) (10' & 12' SPANS)  
B2 WITH B1 BARS (N.F.) (4', 5', 6', & 8' SPANS)

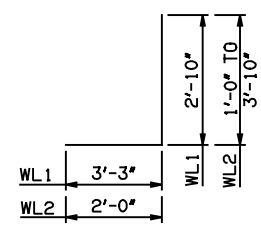
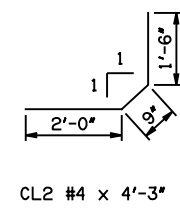
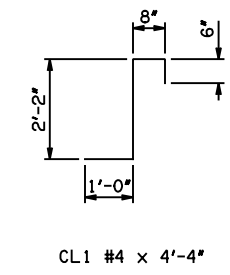
HEADWALL DETAIL AT EXTERIOR WALL

NOTE: F.F. = FAR FACE  
N.F. = NEAR FACE

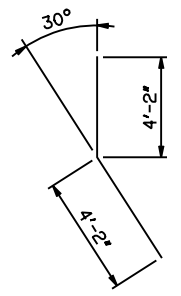
WING ELEVATION



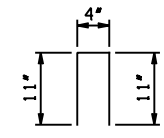
TYPICAL SECTION THRU WING



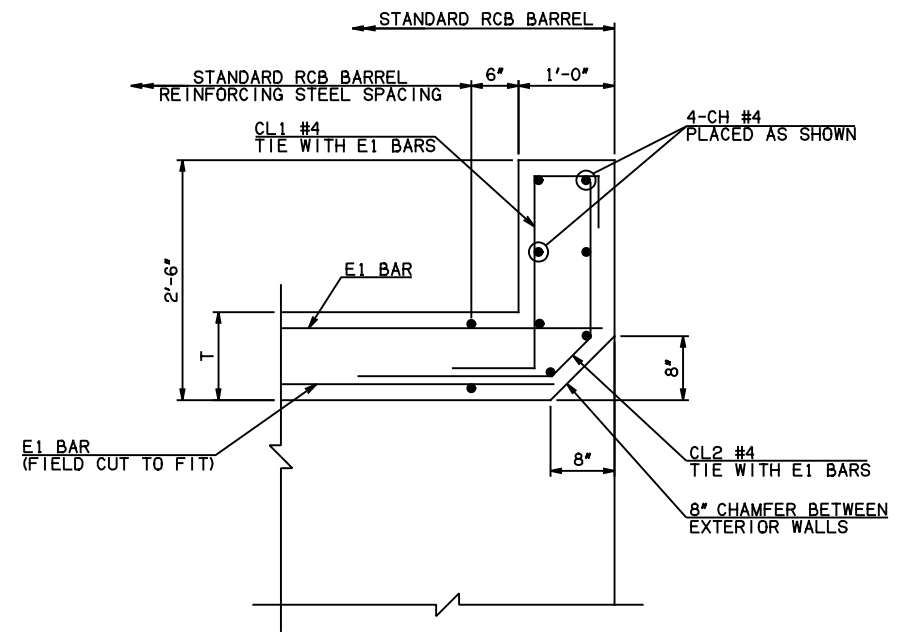
WL1 #5 x 6'-1"  
WL2 #5 x 4'-5" AVG.



WD1 #7 x 8'-4"



U1 #4 x 2'-2"



HEADWALL DETAIL AT MIDSPAN

APPROVED BY BRIDGE ENGINEER *Scott J. Smith* DATE 4/2/10

**OKLAHOMA DEPT. OF TRANSPORTATION**  
**BRIDGE STANDARD (ENGLISH)**  
 RCB CULVERTS - END SECTION DETAILS  
 SINGLE CELL - 4'-0" HEIGHT - 0°  
 SHEET NO. 2 OF 2

2009 SPECIFICATIONS	RCB-E1-H4-0-2	01E
---------------------	---------------	-----

B-575E