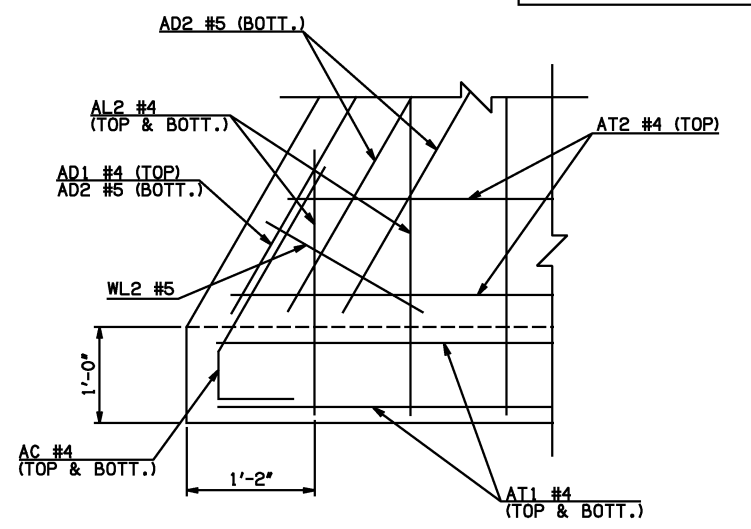
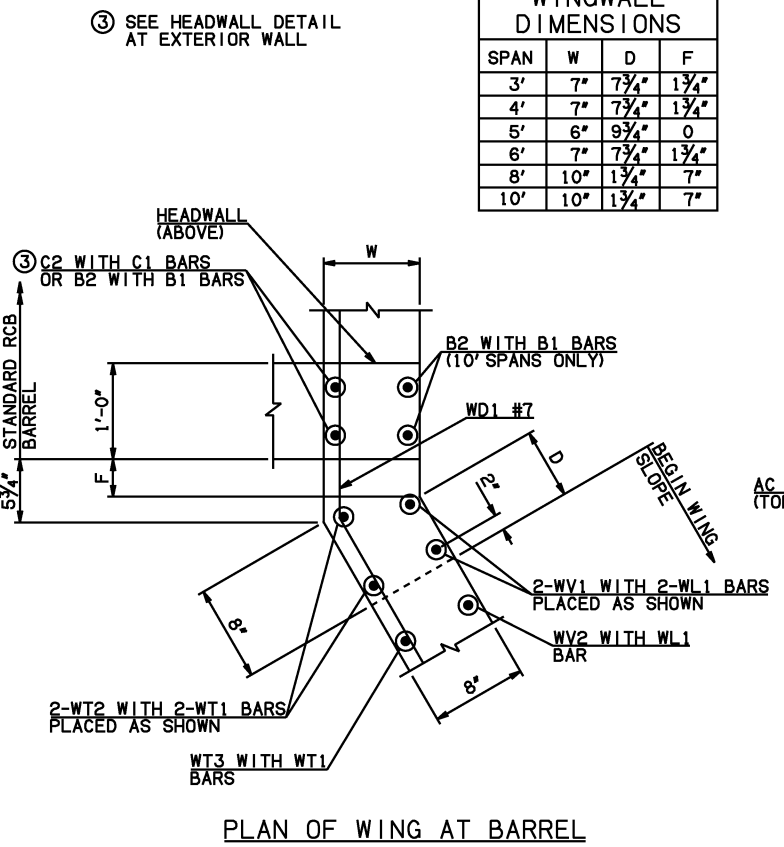
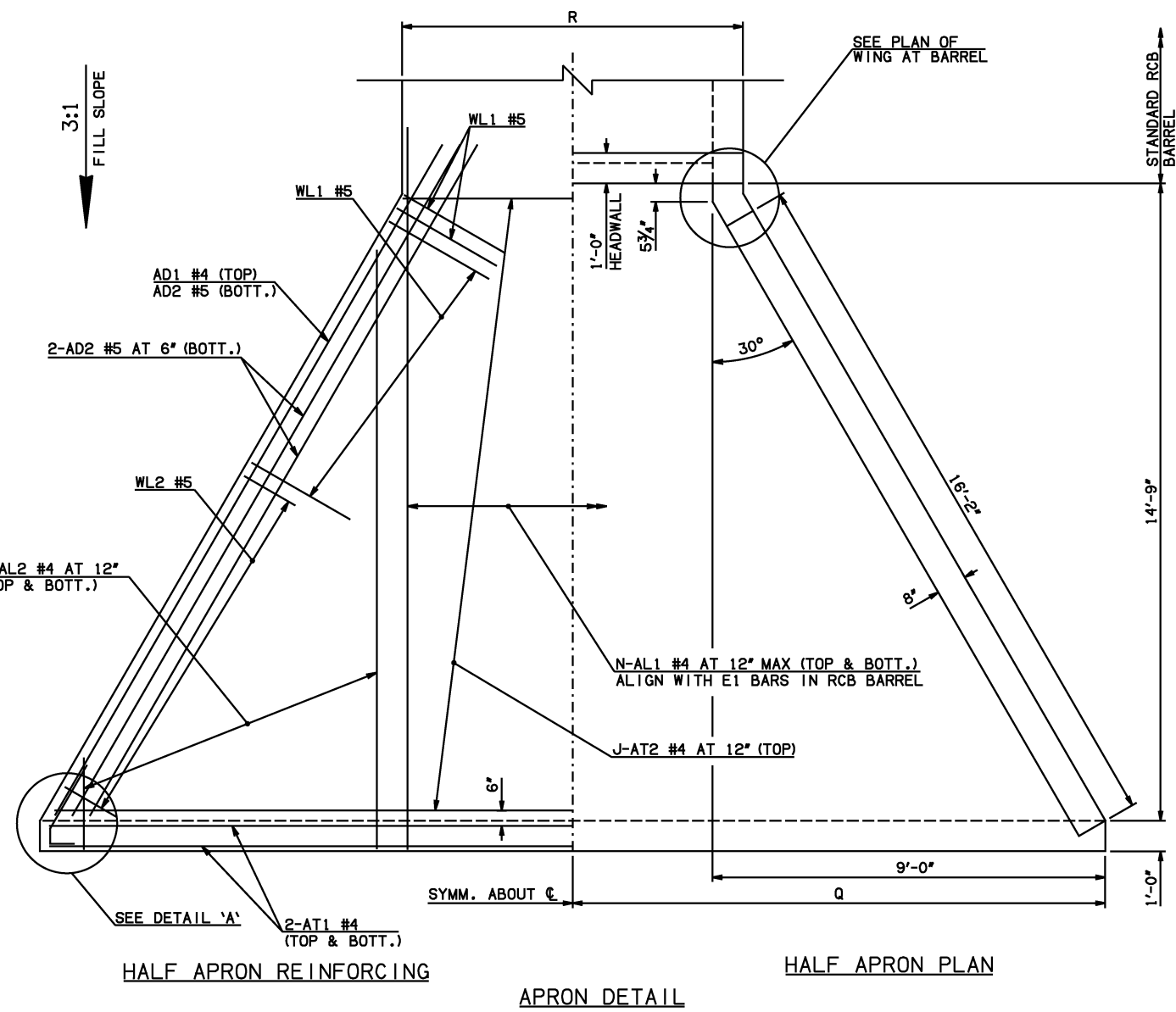


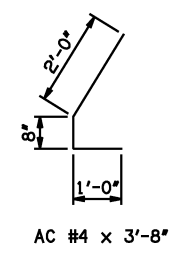
DESCRIPTION	REVISIONS	DATE

WINGWALL DIMENSIONS			
SPAN	W	D	F
3'	7"	7 3/4"	1 3/4"
4'	7"	7 3/4"	1 3/4"
5'	6"	9 3/4"	0
6'	7"	7 3/4"	1 3/4"
8'	10"	1 3/4"	7"
10'	10"	1 3/4"	7"



WINGWALL BAR LIST					
ONE WINGWALL SHOWN; TWO REQUIRED					
MARK	SIZE	QTY.	FORM	LENGTH	REMARKS
WD1	#7	4	BNT	8'-4"	
WH1	#4	2	STR	16'-8"	
WH2	#4	8	STR	8'-8 1/2" AVG.	3'-6" TO 13'-11"
WH3	#5	2	STR	16'-7"	
WL1	#5	13	BNT	6'-1"	
WL2	#5	10	BNT	4'-2 1/2" AVG.	2'-11" TO 5'-6"
WT1	#4	8	STR	2'-10"	
WT2	#4	2	STR	5'-0"	
WT3	#4	6	STR	4'-1 1/2" AVG.	3'-5" TO 4'-10"
WT4	#4	10	STR	2'-2 1/2" AVG.	11" TO 3'-6"
WV1	#5	2	STR	5'-0"	
WV2	#5	6	STR	4'-1 1/2" AVG.	3'-5" TO 4'-10"
U1	#4	1	BNT	1'-10"	

APRON VARIABLES					
SPAN	DIM. R	DIM. Q	QTY. J	QTY. N	
3'	4'-2"	10'-6"	15	5	
4'	5'-2"	11'-0"	15	6	
5'	6'-0"	11'-6"	15	7	
6'	7'-2"	12'-0"	15	8	
8'	9'-8"	13'-0"	15	10	
10'	11'-8"	14'-0"	15	14	



- ① 4-SETS OF 8-AL2 BARS REQUIRED
- ② 2-SETS OF 4-WH2 BARS REQUIRED

APRON AND HEADWALL BAR LIST

ONE APRON AND ONE HEADWALL SHOWN																				
MARK	SIZE	FORM	3' SPAN			4' SPAN			5' SPAN			6' SPAN			8' SPAN			10' SPAN		
			QTY.	LENGTH	REMARKS	QTY.	LENGTH	REMARKS	QTY.	LENGTH	REMARKS	QTY.	LENGTH	REMARKS	QTY.	LENGTH	REMARKS	QTY.	LENGTH	REMARKS
AC	#4	BNT	4	3'-8"		4	3'-8"		4	3'-8"		4	3'-8"		4	3'-8"		4	3'-8"	
AD1	#4	STR	2	18'-8"		2	18'-8"		2	18'-8"		2	18'-8"		2	18'-8"		2	18'-8"	
AD2	#5	STR	6	18'-8"		6	18'-8"		6	18'-8"		6	18'-8"		6	18'-8"		6	18'-8"	
AL1	#4	STR	10	17'-7"		12	17'-7"		14	17'-7"		16	17'-7"		20	17'-7"		28	17'-7"	
AL2	#4	STR	32	8'-6 1/2" AVG.	2'-6" TO 14'-7"	32	8'-6 1/2" AVG.	2'-6" TO 14'-7"	32	8'-6 1/2" AVG.	2'-6" TO 14'-7"	32	8'-6 1/2" AVG.	2'-6" TO 14'-7"	32	8'-6 1/2" AVG.	2'-6" TO 14'-7"	32	8'-6 1/2" AVG.	2'-6" TO 14'-7"
AT1	#4	STR	4	20'-8"		4	21'-8"		4	23'-8"		4	25'-8"		4	27'-8"		4	27'-8"	
AT2	#4	STR	15	12'-1" AVG.	4'-0" TO 20'-2"	15	13'-1" AVG.	5'-0" TO 21'-2"	15	14'-1" AVG.	6'-0" TO 22'-2"	15	15'-1" AVG.	7'-0" TO 23'-2"	15	17'-1" AVG.	9'-0" TO 25'-2"	15	19'-1" AVG.	11'-0" TO 27'-2"
CH	#4	STR	4	3'-10"		4	4'-10"		4	5'-8"		4	6'-10"		4	9'-4"		4	11'-4"	
CL1	#4	BNT	5	4'-4"		6	4'-4"		7	4'-4"		8	4'-4"		10	4'-4"		14	4'-4"	
CL2	#4	BNT	5	4'-3"		6	4'-3"		7	4'-3"		8	4'-3"		10	4'-3"		14	4'-3"	

QUANTITIES							
ITEM	UNIT	3' SPAN	4' SPAN	5' SPAN	6' SPAN	8' SPAN	10' SPAN
CLASS AA CONCRETE	CY	7.90	8.30	8.70	9.20	10.10	10.90
REINFORCING STEEL	LB	1460.00	1510.00	1560.00	1600.00	1690.00	1830.00

NOTE: QUANTITIES ABOVE ARE FOR ONE END SECTION, WHICH IS COMPRISED OF ONE HEADWALL, ONE APRON, AND TWO WINGWALLS. INCLUDED IN REINFORCING STEEL PAY ITEM QUANTITY IS THE WEIGHT OF ADDITIONAL RCB BARREL REINFORCING STEEL REQUIRED AS SHOWN.

APPROVED BY BRIDGE ENGINEER *Scott J. Smith* DATE 4/2/10

OKLAHOMA DEPT. OF TRANSPORTATION
BRIDGE STANDARD (ENGLISH)
 RCB CULVERTS - END SECTION DETAILS
 SINGLE CELL - 3'-0" HEIGHT - 0°
 SHEET NO. 1 OF 2

2009 SPECIFICATIONS | RCB-E1-H3-0-1 | 01E | B-572E