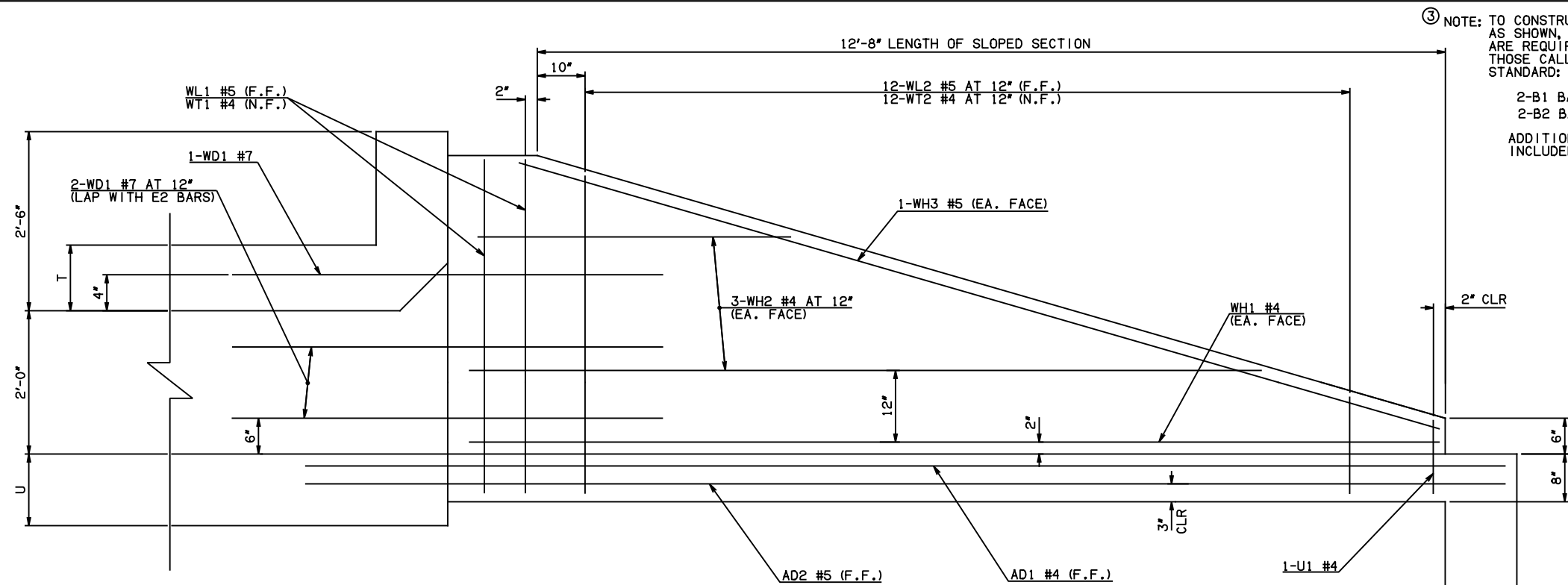
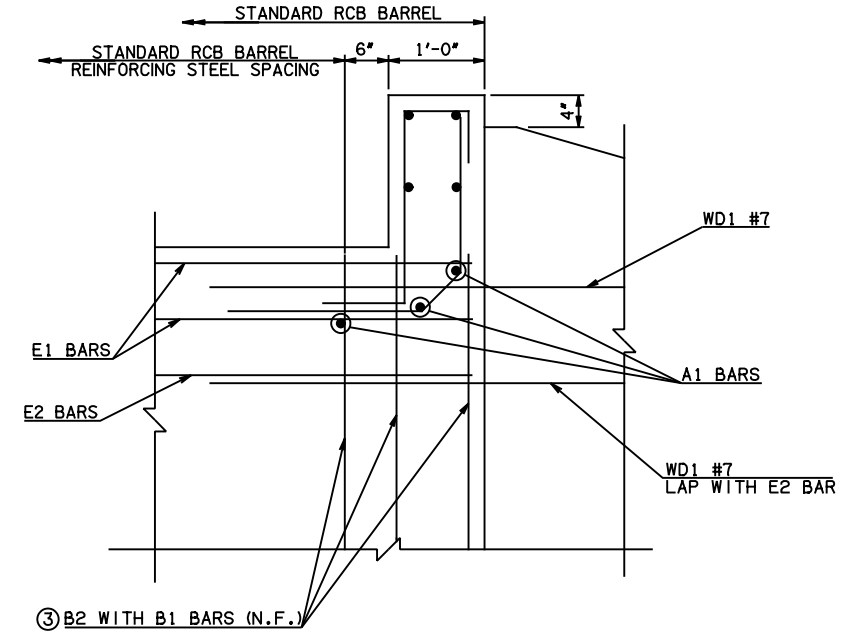


DESCRIPTION	REVISIONS	DATE



③ NOTE: TO CONSTRUCT ONE END SECTION AS SHOWN, THE FOLLOWING BARS ARE REQUIRED IN ADDITION TO THOSE CALLED IN THE RCB BARREL STANDARD:
 2-B1 BARS
 2-B2 BARS
 ADDITIONAL WEIGHT IS INCLUDED IN QUANTITIES.

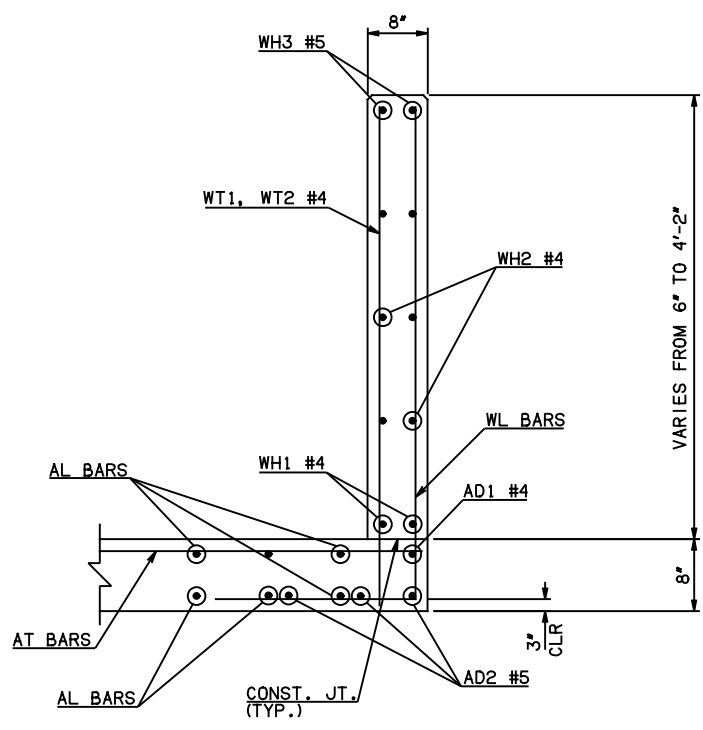


HEADWALL DETAIL AT EXTERIOR WALL

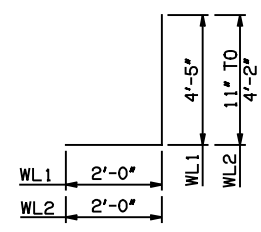
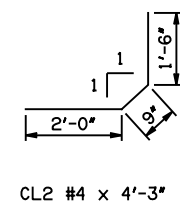
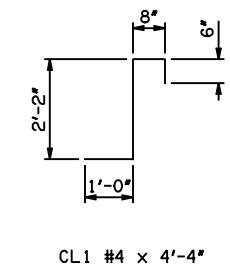
NOTE: F.F. = FAR FACE
 N.F. = NEAR FACE

WING ELEVATION

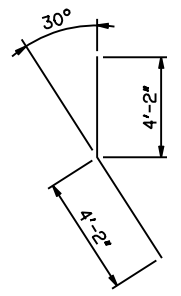
SEE CURTAIN WALL DETAIL



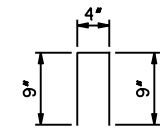
TYPICAL SECTION THRU WING



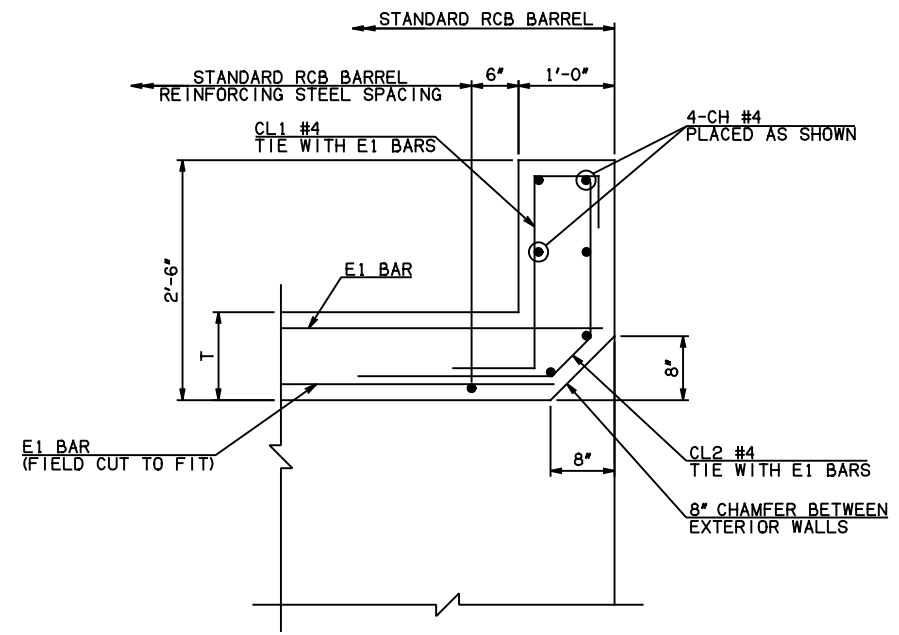
WL1 #5 x 6'-5"
 WL2 #5 x 4'-6 1/2" AVG.



WD1 #7 x 8'-4"



U1 #4 x 1'-10"



HEADWALL DETAIL AT MIDSPAN

APPROVED BY BRIDGE ENGINEER *Scott J. Smith* DATE 4/2/10

OKLAHOMA DEPT. OF TRANSPORTATION
BRIDGE STANDARD (ENGLISH)
 RCB CULVERTS - END SECTION DETAILS
 SINGLE CELL - 2'-0" HEIGHT - 0°
 SHEET NO. 2 OF 2

2009 SPECIFICATIONS | RCB-E1-H2-0-2 | 01E
 B-571E