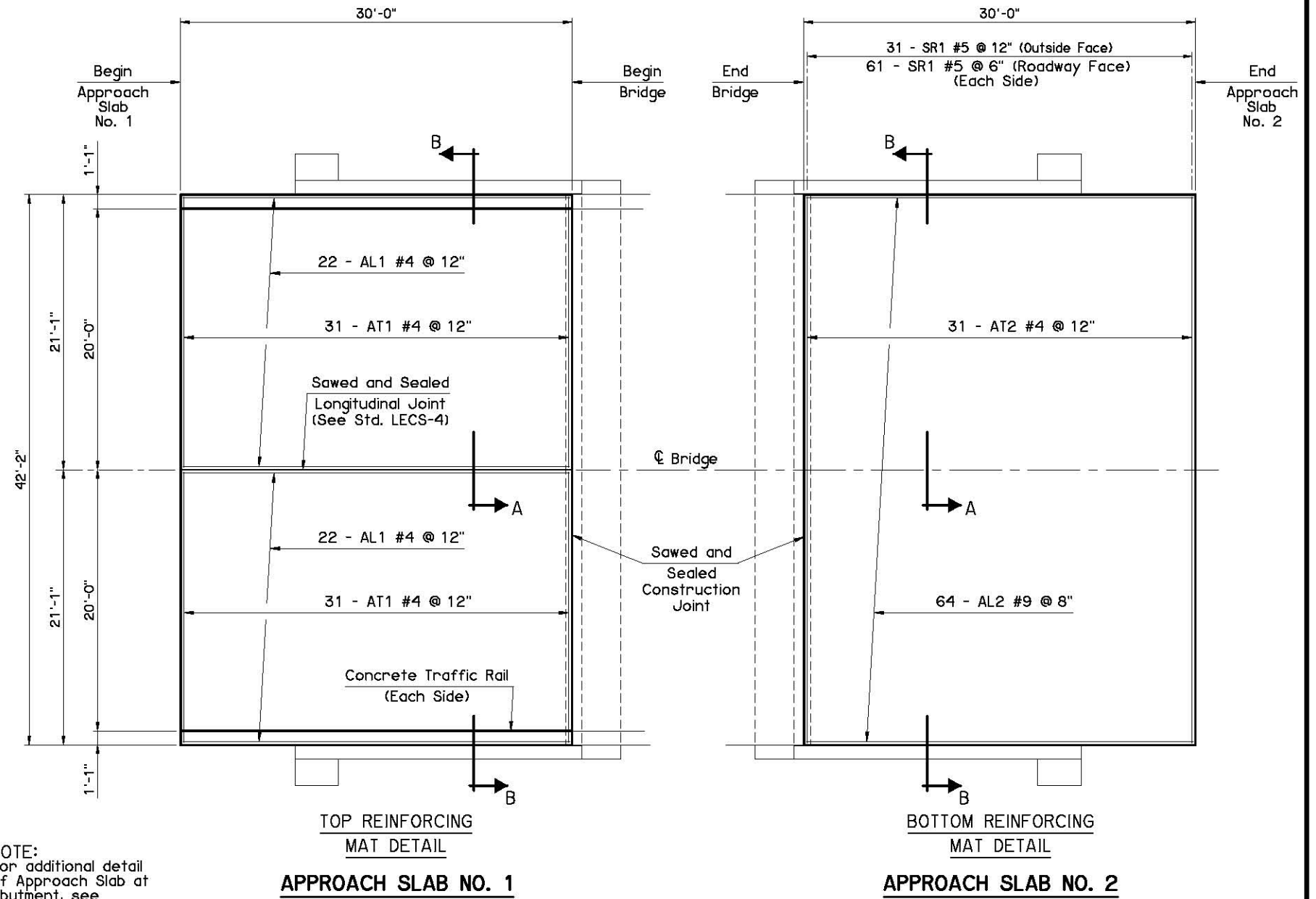


APPROACH SLAB QUANTITIES				
ITEM	UNIT	APPROACH SLAB NO. 1	APPROACH SLAB NO. 2	
① APPROACH SLAB	S.Y.	140.6	140.6	
SAW-CUT GROOVING	S.Y.	133.3	133.3	
CONCRETE RAIL (TR4)	L.F.	60.0	60.0	
WATER REPELLENT (VISUALLY INSPECTED)	S.Y.	28	28	

① The Department considers the cost of Concrete, Reinforcing Steel (including SR1 bars), Backer Rod, Rapid Cure Joint Sealant, Polystyrene and Polyethylene Sheeting to be included in the contract unit price of APPROACH SLAB. There is an estimated 50.8 C.Y. of Class AA Concrete and an estimated 9,880 LB. of Epoxy Coated Reinforcing Steel in each Approach Slab.

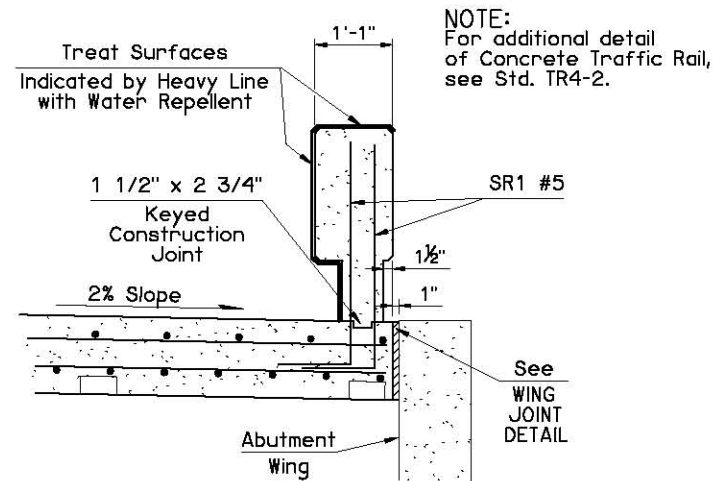
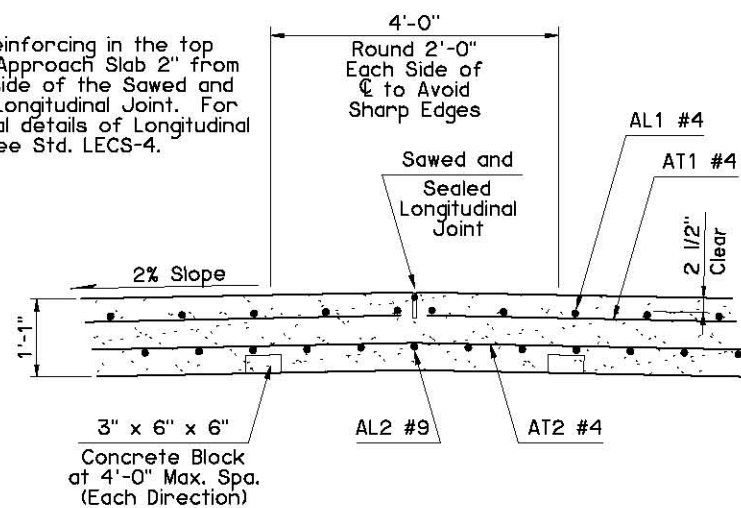
APPROACH SLAB BAR LIST (ONE SHOWN, TWO REQUIRED)				
MARK	SIZE	NO.	FORM	LENGTH
EPOXY COATED REINFORCING				
AT1	#4	62	STR.	20'-9"
AT2	#4	31	STR.	41'-10"
AL1	#4	44	STR.	29'-10"
AL2	#9	64	STR.	29'-10"
SR1	#5	184	BNT.	4'-1"

NOTE:
For SR1 bar bend, see Std. TR4-2.

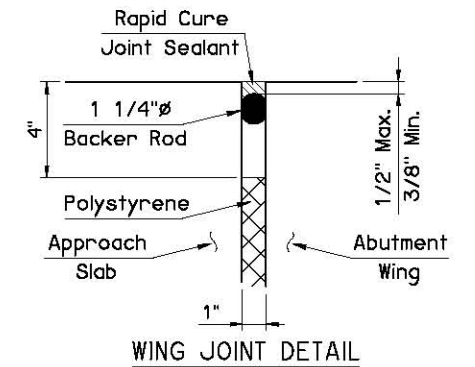


NOTE:
For additional detail of Approach Slab at Abutment, see LONGITUDINAL SECTION and DIAPHRAGM DETAILS.

NOTE:
Place Reinforcing in the top of the Approach Slab 2" from either side of the Sawed and Sealed Longitudinal Joint. For additional details of Longitudinal Joint, see Std. LECS-4.



Information shown on this sheet is applicable only with Asphalt Roadway



APPROVED BY BRIDGE ENGINEER *Scott J. Smith* DATE *4/2/10*

OKLAHOMA DEPT. OF TRANSPORTATION
BRIDGE STANDARD (ENGLISH)

**APPROACH SLAB DETAILS
CONVENTIONAL**

2009 SPECIFICATIONS | B40-C-AS | 03E
B-416E