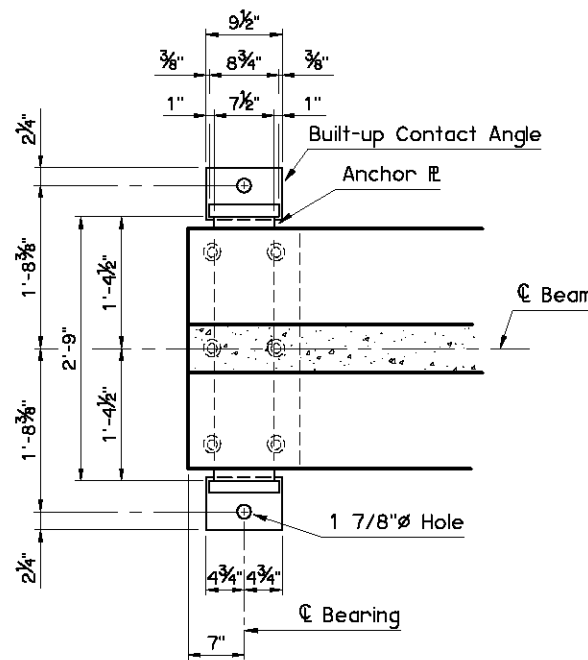
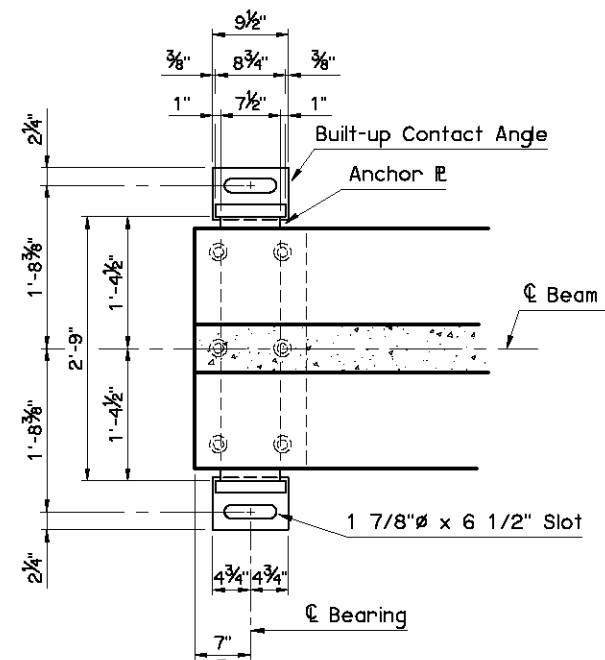


**BEVELED ANCHOR PLATE DETAIL**

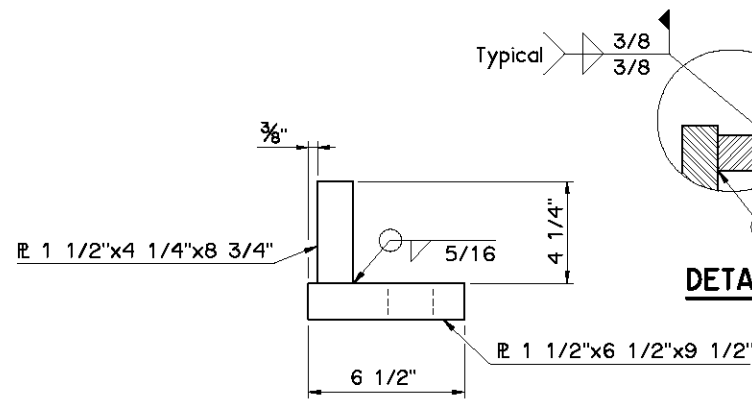
NOTE: Beveled Anchor Plate is required when angle between beam supports due to roadway grade exceeds 1%. Bevel Slope to match angle between beam supports and horizontal.



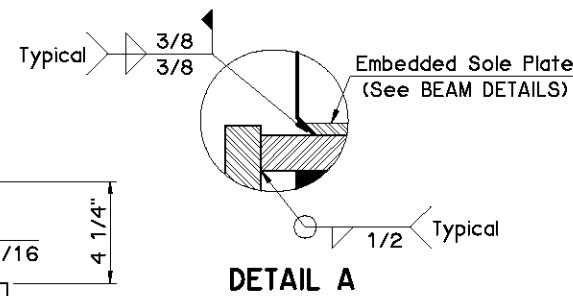
**FIXED BEARING PLAN**



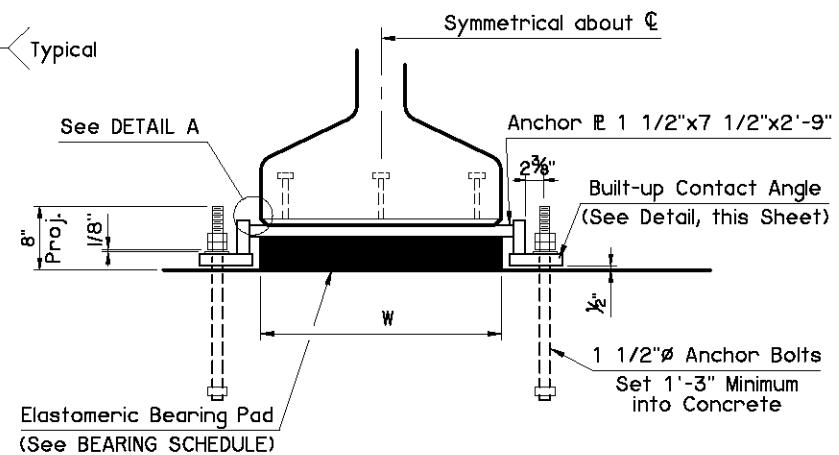
**EXPANSION BEARING PLAN**



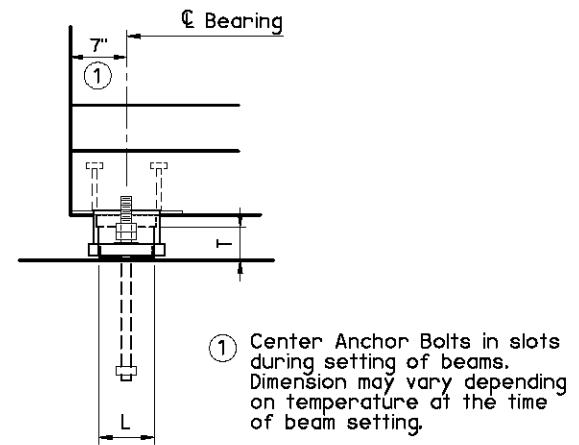
**BUILT-UP CONTACT ANGLE DETAIL**



**DETAIL A**



**END VIEW**



**SIDE VIEW**

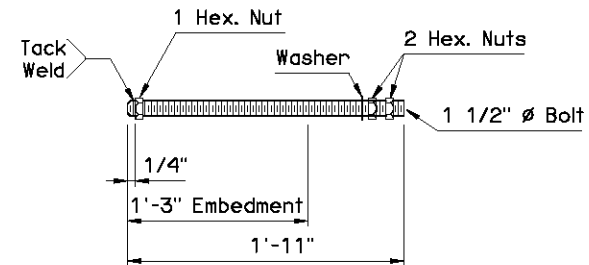
**BEARING ASSEMBLY NOTES:**

Provide structural steel for Anchor Plates and Built-up Contact Angles in accordance with ASTM A240 (Austenitic Stainless Steel, Type 316, Charpy V-Notch testing not required). For Anchor Bolts, provide continuously threaded bars in accordance with ASTM A320, Class 2, Grade B8M (Austenitic Stainless Steel, Type 316, Charpy V-Notch testing not required). Use austenitic stainless steel nuts and washers conforming to ASTM A194, Grade 8M and ASTM A320, respectively. Perform all welding consistent with procedures for stainless steel.

**BEARING DETAILS**

| BEARING SCHEDULE |                                      |             |             |                |                               |
|------------------|--------------------------------------|-------------|-------------|----------------|-------------------------------|
| SPAN             | 60 DUROMETER ELASTOMERIC BEARING PAD |             |             |                | MAXIMUM EXPANSION LENGTH<br>② |
|                  | SIZE (T x L x W)                     | COVER LAYER | INNER LAYER | LAMINATE PLATE |                               |
| 95'              | 4 1/8"x6"x2'-6"                      | 2 - 1/4"    | 7 - 3/8"    | 8 - 1/8"       | 255'                          |
| 100'             | 4 1/8"x6"x2'-6"                      | 2 - 1/4"    | 7 - 3/8"    | 8 - 1/8"       | 255'                          |
| 105'             | 4 1/8"x6 1/2"x2'-6"                  | 2 - 1/4"    | 7 - 3/8"    | 8 - 1/8"       | 255'                          |
| 110'             | 4 1/8"x6 1/2"x2'-6"                  | 2 - 1/4"    | 7 - 3/8"    | 8 - 1/8"       | 260'                          |
| 115'             | 4 1/8"x6 1/2"x2'-6"                  | 2 - 1/4"    | 7 - 3/8"    | 8 - 1/8"       | 260'                          |
| 120'             | 4 1/8"x6 1/2"x2'-6"                  | 2 - 1/4"    | 7 - 3/8"    | 8 - 1/8"       | 260'                          |
| 125'             | 4 1/8"x6 1/2"x2'-6"                  | 2 - 1/4"    | 7 - 3/8"    | 8 - 1/8"       | 265'                          |
| 130'             | 4 1/8"x7"x2'-6"                      | 2 - 1/4"    | 7 - 3/8"    | 8 - 1/8"       | 265'                          |

② Bonding to Anchor Plate not required.



**ANCHOR BOLT DETAIL**

APPROVED BY BRIDGE ENGINEER *Scott J. Smith* DATE *4/2/10*

OKLAHOMA DEPT. OF TRANSPORTATION  
BRIDGE STANDARD (ENGLISH)  
**BEARING DETAILS**  
**TYPE J P.C. BEAMS**  
**CONVENTIONAL**

2009 SPECIFICATIONS | B40-C-BRG-PCJ | 01E | B-398E