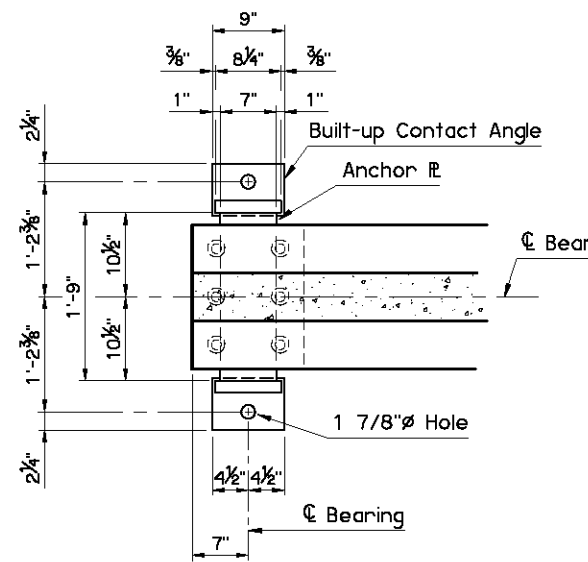
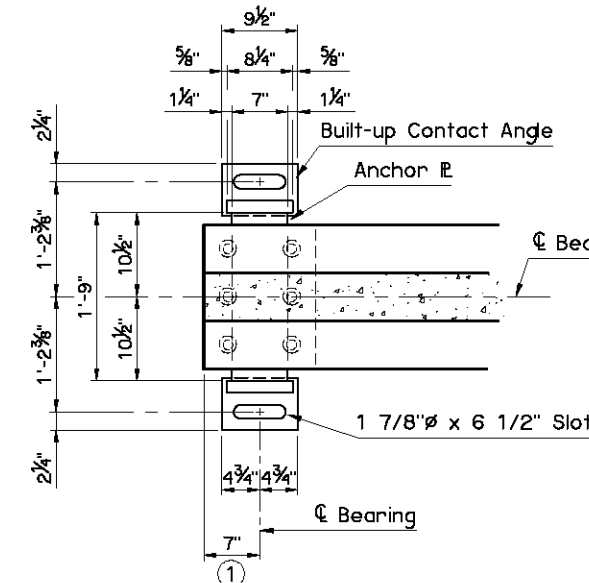


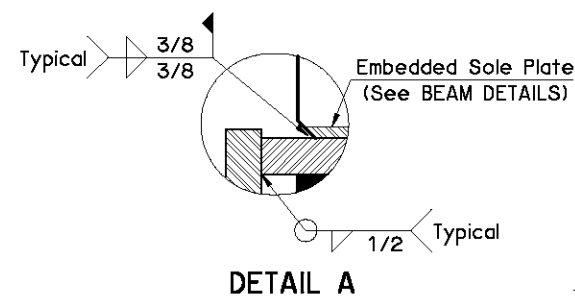
**ANCHOR BOLT DETAIL**



**FIXED BEARING PLAN**

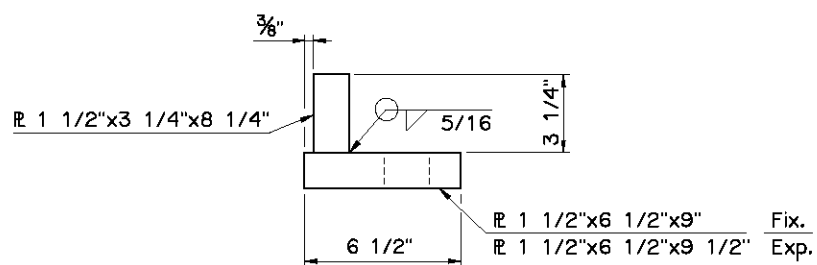


**EXPANSION BEARING PLAN**

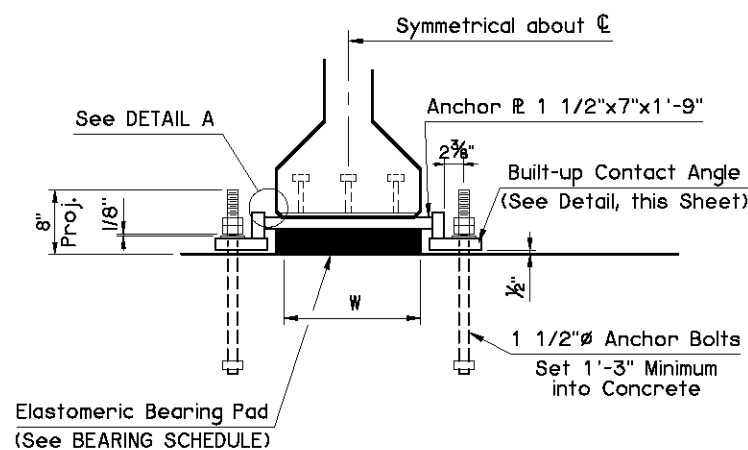


**DETAIL A**

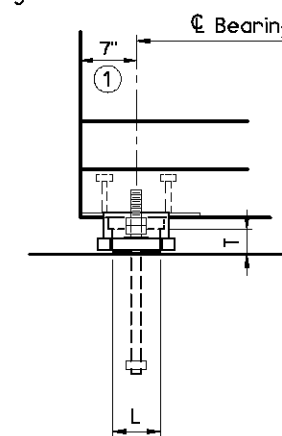
① Center Anchor Bolts in slots during setting of beams. Dimension may vary depending on temperature at the time of beam setting.



**BUILT-UP CONTACT ANGLE DETAIL**

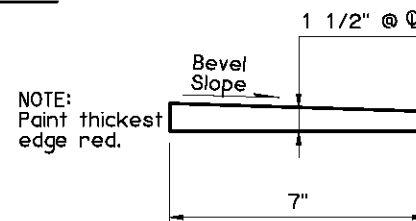


**END VIEW**



**SIDE VIEW**

**BEARING DETAILS**



**BEVELED ANCHOR PLATE DETAIL**

NOTE: Beveled Anchor Plate is required when angle between beam supports due to roadway grade exceeds 1%. Bevel Slope to match angle between beam supports and horizontal.

**BEARING ASSEMBLY NOTES:**

Provide structural steel for Anchor Plates and Built-up Contact Angles in accordance with ASTM A240 (Austenitic Stainless Steel, Type 316, Charpy V-Notch testing not required). For Anchor Bolts, provide continuously threaded bars in accordance with ASTM A320, Class 2, Grade B8M (Austenitic Stainless Steel, Type 316, Charpy V-Notch testing not required). Use austenitic stainless steel nuts and washers conforming to ASTM A194, Grade 8M and ASTM A320, respectively. Perform all welding consistent with procedures for stainless steel.

BEARING SCHEDULE						
SPAN	60 DUROMETER ELASTOMERIC BEARING PAD			MAXIMUM EXPANSION LENGTH WITHOUT BONDING	MAXIMUM EXPANSION LENGTH WITH BONDING ②	
	SIZE (T x L x W)	COVER LAYER	INNER LAYER			
30'	3 1/8"x5 1/2"x1'-6"	2 - 1/4"	5 - 3/8"	6 - 1/8"	235'	
35'	3 1/8"x6"x1'-6"	2 - 1/4"	5 - 3/8"	6 - 1/8"	230'	
40'	3 1/8"x6 1/2"x1'-6"	2 - 1/4"	5 - 3/8"	6 - 1/8"	220'	
45'	3 1/8"x6 1/2"x1'-6"	2 - 1/4"	5 - 3/8"	6 - 1/8"	220'	
50'	3 1/8"x6 1/2"x1'-6"	2 - 1/4"	5 - 3/8"	6 - 1/8"	225'	
55'	3 1/8"x6 1/2"x1'-6"	2 - 1/4"	5 - 3/8"	6 - 1/8"	230'	

② Bond to Anchor Plate in accordance with Subsection 733.06.B of the Standard Specifications.

APPROVED BY BRIDGE ENGINEER *Scott J. Smith* DATE *4/2/10*

OKLAHOMA DEPT. OF TRANSPORTATION  
BRIDGE STANDARD (ENGLISH)  
**BEARING DETAILS**  
**TYPE II AND TYPE B P.C. BEAMS**  
**CONVENTIONAL**

2009 SPECIFICATIONS | B40-C-BRG-PC2 | 01E  
B-395E