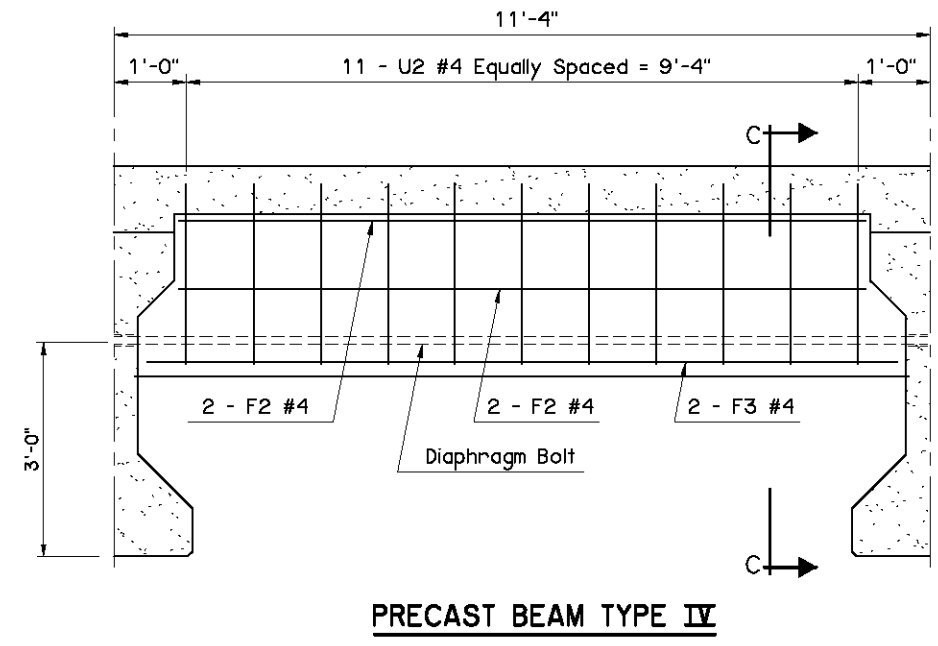
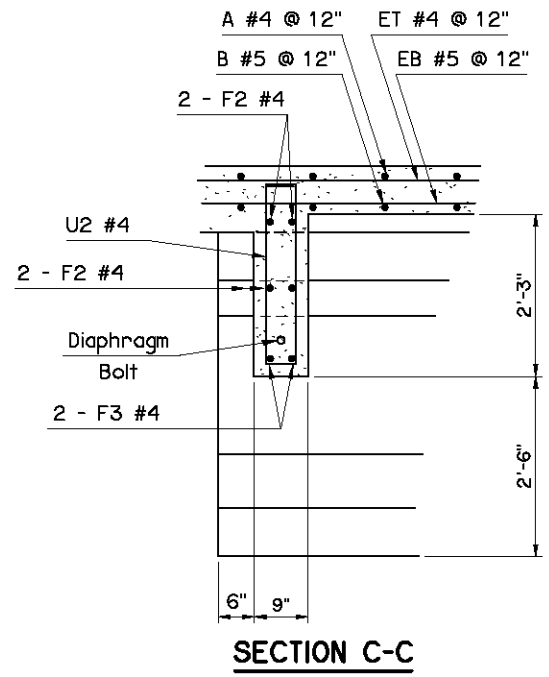


END DIAPHRAGM BAR LIST ONE SPAN SHOWN					
P.C. BEAM	MARK	SIZE	NO.	FORM	LENGTH
TYPE II	U2	#4	96	BNT.	4'-11"
	F2	#4	24	STR.	10'-2"
	F3	#4	12	STR.	10'-6"
TYPE B	U2	#4	96	BNT.	4'-9"
	F2	#4	24	STR.	10'-2"
	F3	#4	12	STR.	10'-6"
TYPE III	U2	#4	84	BNT.	5'-9"
	F2	#4	24	STR.	9'-8"
	F3	#4	12	STR.	10'-5"
TYPE C	U2	#4	84	BNT.	5'-5"
	F2	#4	24	STR.	9'-8"
	F3	#4	12	STR.	10'-5"
TYPE IV	U2	#4	66	BNT.	6'-3"
	F2	#4	24	STR.	9'-4"
	F3	#4	12	STR.	10'-4"



APPROVED BY BRIDGE ENGINEER *David J. Smith* DATE *4/2/10*
 OKLAHOMA DEPT. OF TRANSPORTATION
 BRIDGE STANDARD (ENGLISH)
END DIAPHRAGM DETAILS
TYPE II, B, III, C AND IV P.C. BEAMS
CONVENTIONAL (SHEET 1 OF 2)
 2009 SPECIFICATIONS | B40-C-DIA-END-PC234-1 | 02E | B-371E