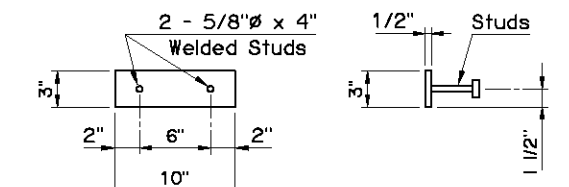
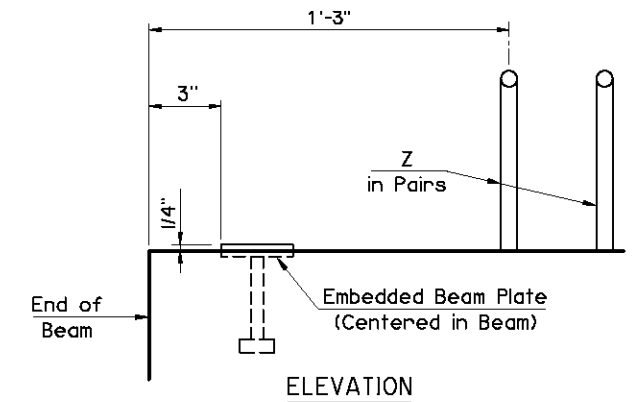
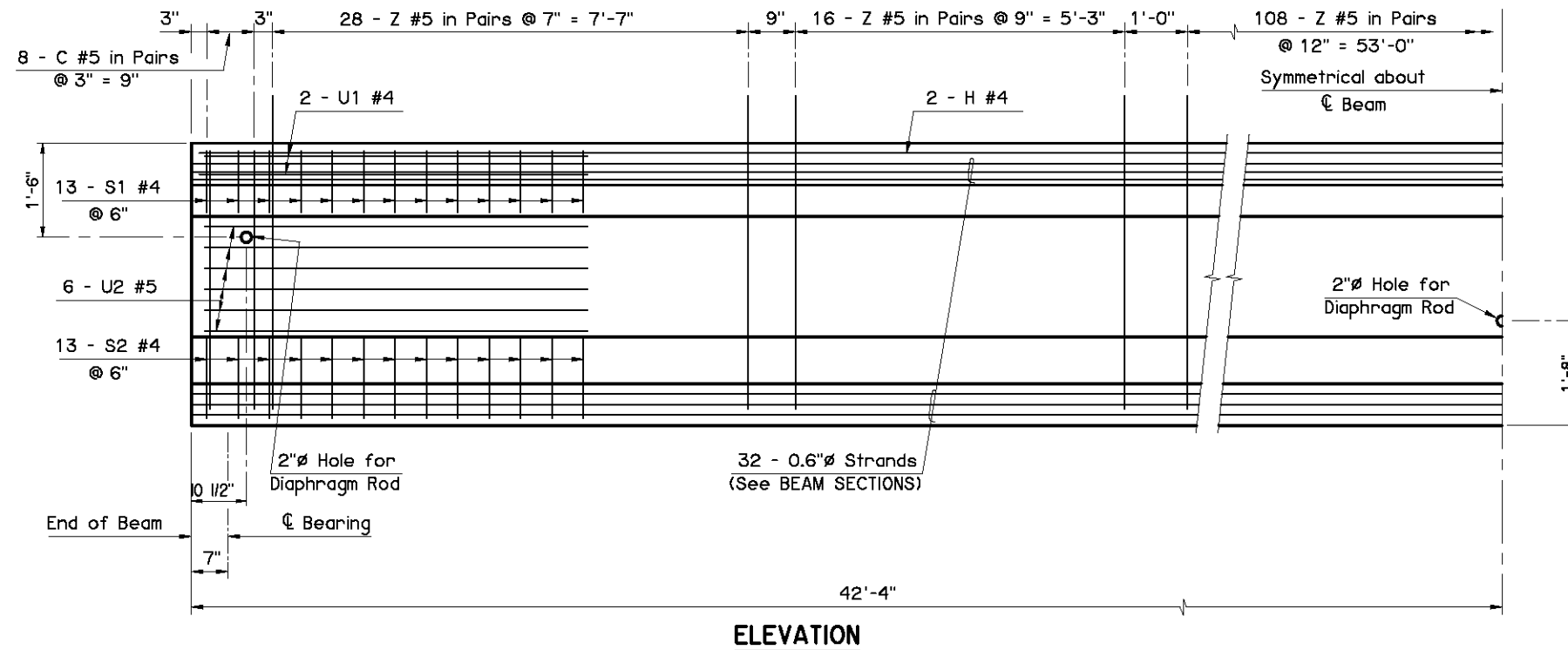
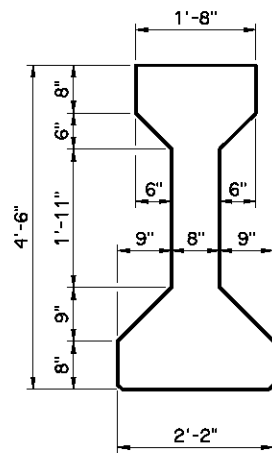


**PRESTRESSED CONCRETE BEAM NOTES**

**COMPRESSIVE STRENGTH**  
Provide concrete with a compressive strength of 5,250 p.s.i. at transfer of prestress and 7,000 p.s.i. at 28 days.

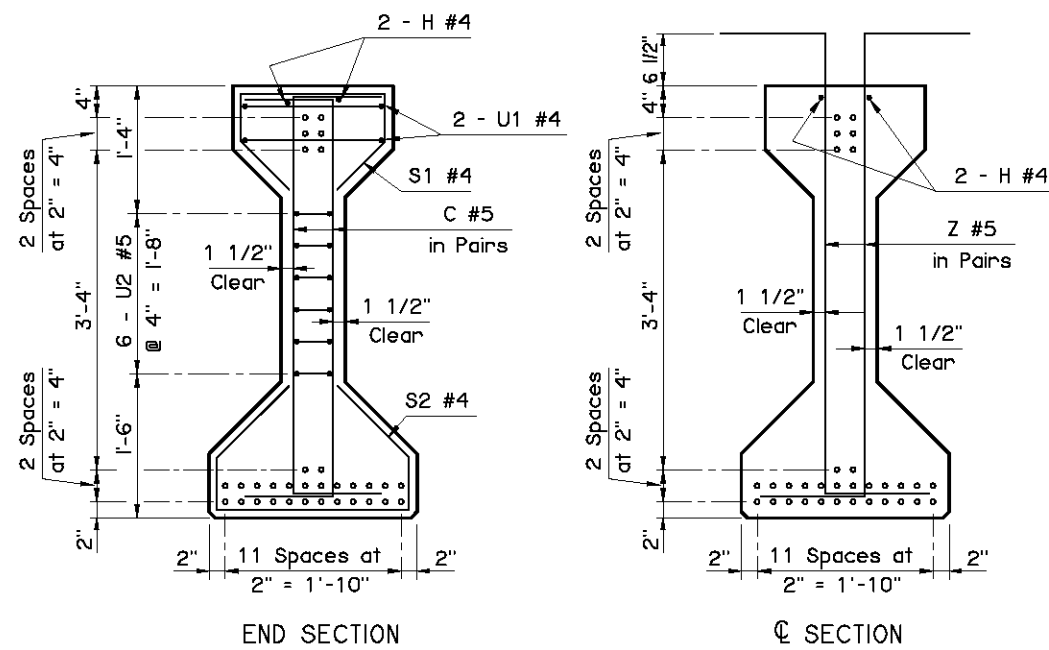
**STRAND TYPE**  
Provide low-relaxation strands having a nominal diameter of 0.6" with ultimate tensile strength of 270 k.s.i.

**LFD OPERATING RATING - HS 41.4**  
The Operating Rating shown is based on a nominal strength using only strands that are bonded for the full length of the beam. All partially bonded strands are neglected in strength computations.



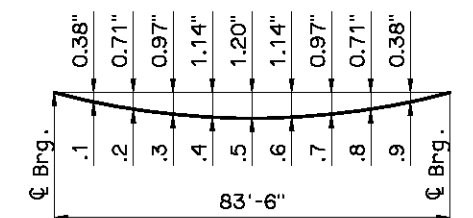
**EMBEDDED BEAM PLATE DETAILS**

**NOTE:**  
Provide an Embedded Beam Plate at expansion ends only.



**BEAM SECTIONS**  
(32 - 0.6"Ø STRANDS)

Information shown on this sheet is applicable only to the standard bridge cross-section with 40' Clear Roadway, 8" Deck Slab and 4 Beams at 11'-4" spacing. Any deviation requires custom design and details with an appropriate Dead Load Deflection Diagram.



**NOTE:**  
The Dead Load Deflection shown above at the tenth points are the initial deflections due to Deck Slab + Diaphragms + Haunch + S.I.P. Steel Deck Form Allowance + Concrete Traffic Rail. It does not include the Beam weight or Future Wearing Surface.

APPROVED BY BRIDGE ENGINEER *David J. Smith* DATE *4/2/10*

OKLAHOMA DEPT. OF TRANSPORTATION  
BRIDGE STANDARD (ENGLISH)  
**TYPE IV P.C. BEAM DETAILS**  
**85' SPAN**  
**CONVENTIONAL**

2009 SPECIFICATIONS | B40-C-PCB-IV-85 | 01E | B-308E