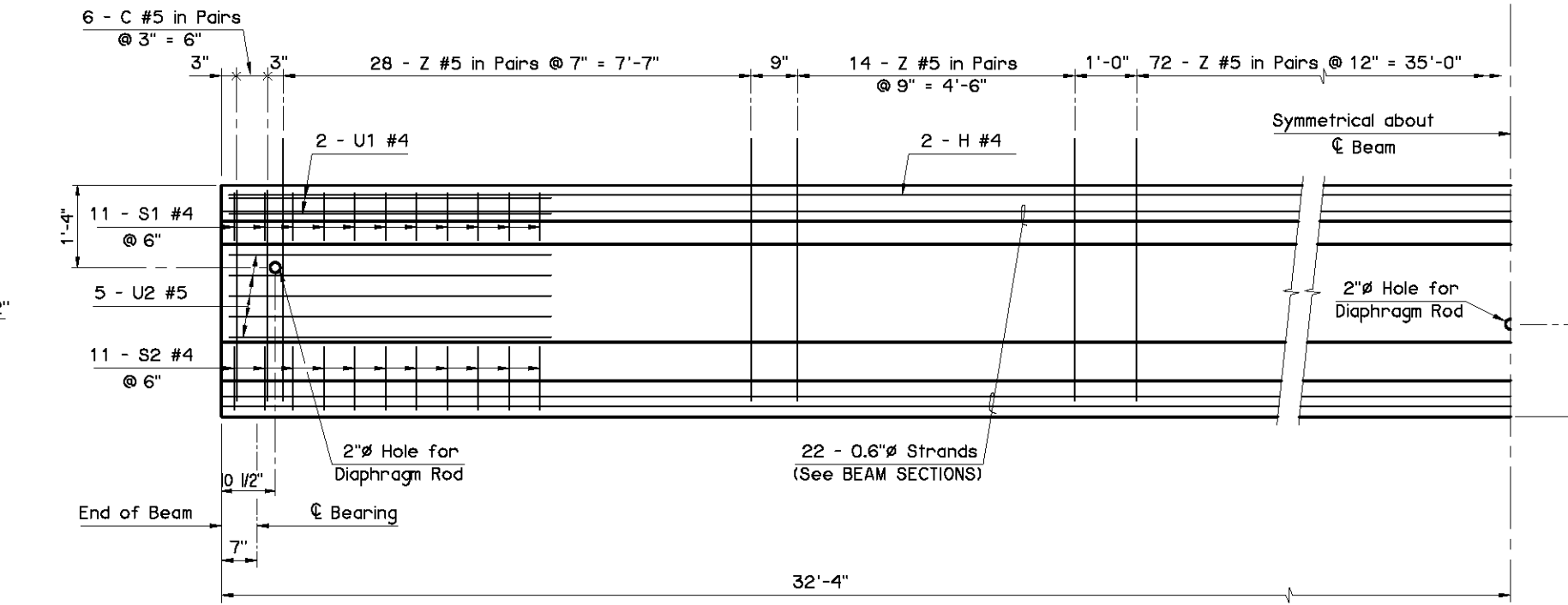
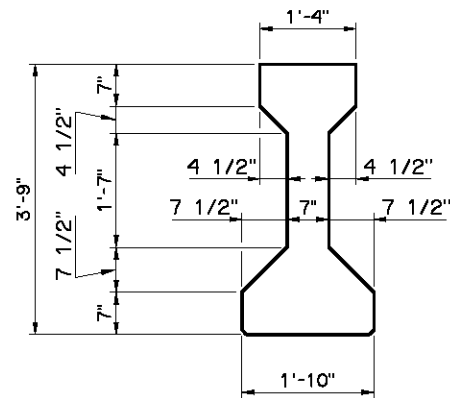


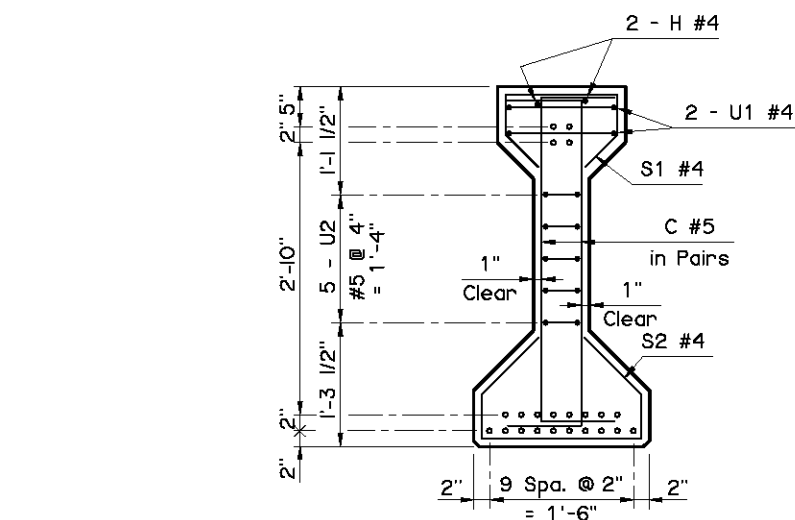
PLAN



ELEVATION

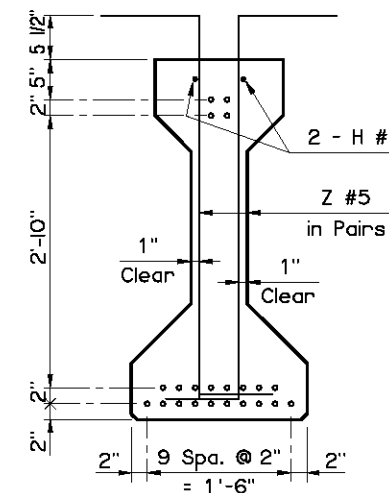


END VIEW
(Type III P.C.B.)



END SECTION

BEAM SECTIONS
(22 - 0.6"Ø STRANDS)



CL SECTION

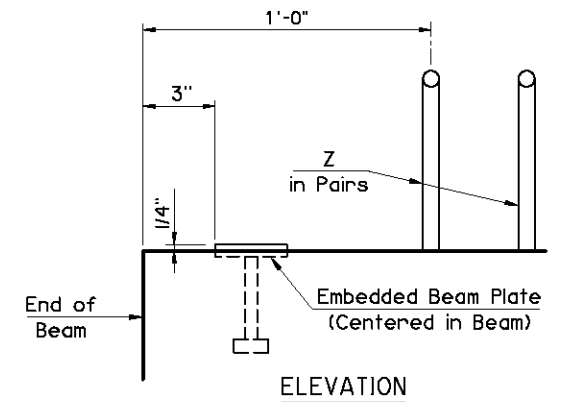
Information shown on this sheet is applicable only to the standard bridge cross-section with 40' Clear Roadway, 8" Deck Slab and 4 Beams at 11'-4" spacing. Any deviation requires custom design and details with an appropriate Dead Load Deflection Diagram.

PRESTRESSED CONCRETE BEAM NOTES

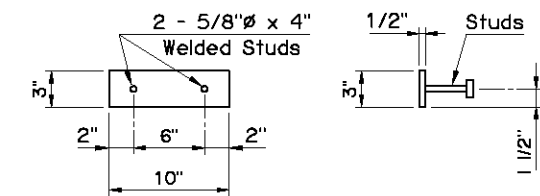
COMPRESSIVE STRENGTH
Provide concrete with a compressive strength of 6,000 p.s.i. at transfer of prestress and 8,000 p.s.i. at 28 days.

STRAND TYPE
Provide low-relaxation strands having a nominal diameter of 0.6" with ultimate tensile strength of 270 k.s.i.

LFD OPERATING RATING - HS 37.0
The Operating Rating shown is based on a nominal strength using only strands that are bonded for the full length of the beam. All partially bonded strands are neglected in strength computations.



ELEVATION

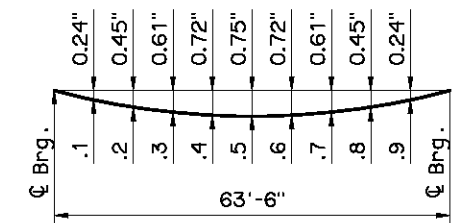


TOP VIEW

END VIEW

EMBEDDED BEAM PLATE DETAILS

NOTE:
Provide an Embedded Beam Plate at expansion ends only.



DEAD LOAD DEFLECTION DIAGRAM

NOTE:
The Dead Load Deflection shown above at the tenth points are the initial deflections due to Deck Slab + Diaphragms + Haunch + S.I.P. Steel Deck Form Allowance + Concrete Traffic Rail. It does not include the Beam weight or Future Wearing Surface.

APPROVED BY BRIDGE ENGINEER *David J. Smith* DATE *4/2/10*

OKLAHOMA DEPT. OF TRANSPORTATION
BRIDGE STANDARD (ENGLISH)
TYPE III P.C. BEAM DETAILS
65' SPAN
CONVENTIONAL

2009 SPECIFICATIONS | B40-C-PCB-III-65 | 01E
B-293E