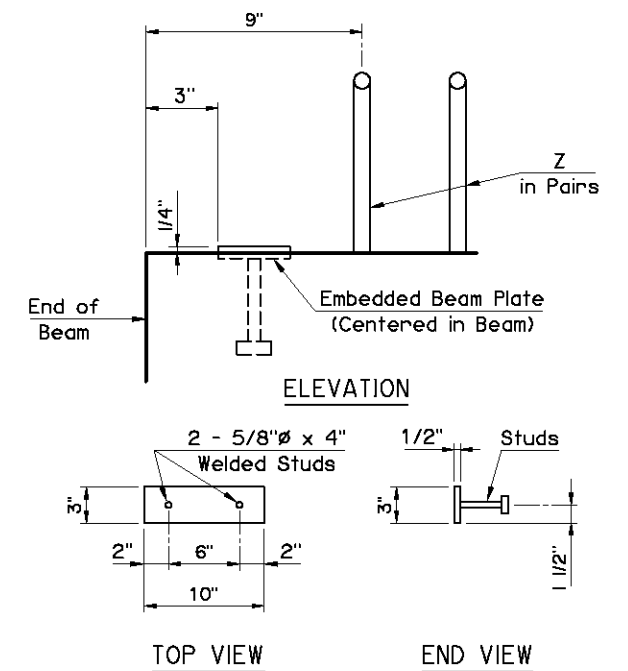


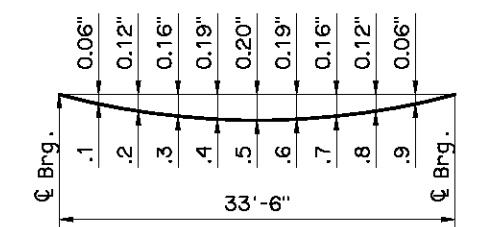
COMPRESSIVE STRENGTH
Provide concrete with a compressive strength of 4,500 p.s.i. at transfer of prestress and 6,000 p.s.i. at 28 days.

STRAND TYPE
Provide low-relaxation strands having a nominal diameter of 0.6" with ultimate tensile strength of 270 k.s.i.

LFD OPERATING RATING - HS 38.5
The Operating Rating shown is based on a nominal strength using only strands that are bonded for the full length of the beam. All partially bonded strands are neglected in strength computations.



NOTE:
Provide an Embedded Beam Plate at expansion
ends only.



NOTE:
The Dead Load Deflection shown above at the tenth points are the initial deflections due to Deck Slab + Diaphragms + Haunch + S.I.P. Steel Deck Form Allowance + Concrete Traffic Rail. It does not include the Beam weight or Future Wearing Surface.

APPROVED BY BRIDGE ENGINEER	DATE
OKLAHOMA DEPT. OF TRANSPORTATION BRIDGE STANDARD (ENGLISH) TYPE B P.C. BEAM DETAILS 35' SPAN CONVENTIONAL	
2009 SPECIFICATIONS	B40-C-PCB-B-35 O2E B-283E