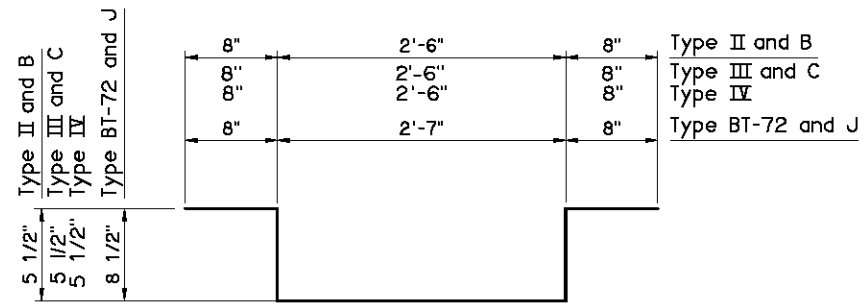


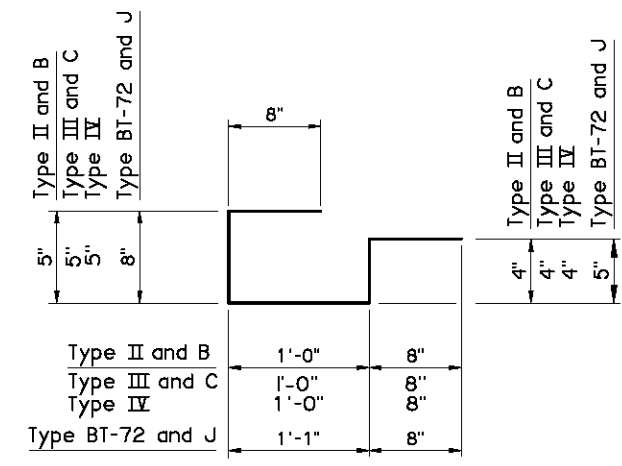
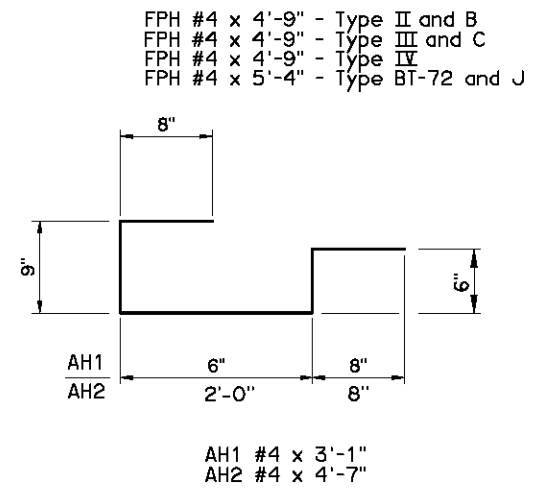
SUPERSTRUCTURE BAR LIST												
EPOXY COATED REINFORCING			SPAN TYPE									
			ABUTMENT TO FIXED PIER		ABUTMENT TO EXPANSION PIER		FIXED PIER TO FIXED PIER		FIXED PIER TO EXPANSION PIER		EXPANSION PIER TO EXPANSION PIER	
MARK	SIZE	FORM	NUMBER	LENGTH	NUMBER	LENGTH	NUMBER	LENGTH	NUMBER	LENGTH	NUMBER	LENGTH
ET	#4	STR.	43	Span Length + 9" ①	43	Span Length + 7"	43	Span Length ①	43	Span Length - 2" ①	43	Span Length - 4"
EB	#5	STR.	43	Span Length + 9" ②	43	Span Length + 7"	43	Span Length ②	43	Span Length - 2" ②	43	Span Length - 4"
A	#4	BNT.	SL + 2 ③	42'-10"	SL + 2 ③	42'-10"	SL + 1 ③	42'-10"	SL + 1 ③	42'-10"	SL + 1 ③	42'-10"
AC	#6	BNT.	4 * (SL + 1) ③	12'-3"	4 * (SL + 1) ③	12'-3"	4 * (SL) ③	12'-3"	4 * (SL) ③	12'-3"	4 * (SL) ③	12'-3"
B	#5	STR.	SL + 2 ③	41'-10"	SL + 4 ③	41'-10"	SL + 1 ③	41'-10"	SL + 3 ③	41'-10"	SL + 5 ③	41'-10"
AS	#4	BNT.	43	5'-0"	43	5'-0"	-	-	-	-	-	-
AT	#4	STR.	2	41'-10"	2	41'-10"	-	-	-	-	-	-
EPT	#4	STR.	-	-	1	41'-10"	-	-	1	41'-10"	2	41'-10"

SUPERSTRUCTURE BAR LIST																						
EPOXY COATED REINFORCING			SPAN TYPE																			
			ABUTMENT TO FIXED PIER				ABUTMENT TO EXPANSION PIER				FIXED PIER TO FIXED PIER				FIXED PIER TO EXPANSION PIER				EXPANSION PIER TO EXPANSION PIER			
			TYPE II, B, III, C AND IV		TYPE BT-72 AND J		TYPE II, B, III, C AND IV		TYPE BT-72 AND J		TYPE II, B, III, C AND IV		TYPE BT-72 AND J		TYPE II, B, III, C AND IV		TYPE BT-72 AND J		TYPE II, B, III, C AND IV		TYPE BT-72 AND J	
MARK	SIZE	FORM	NUMBER	LENGTH	NUMBER	LENGTH	NUMBER	LENGTH	NUMBER	LENGTH	NUMBER	LENGTH	NUMBER	LENGTH	NUMBER	LENGTH	NUMBER	LENGTH	NUMBER	LENGTH		
AH1	#4	BNT.	12	3'-1"	18	3'-1"	12	3'-1"	18	3'-1"	-	-	-	-	-	-	-	-	-	-		
AH2	#4	BNT.	33	4'-7"	24	4'-7"	33	4'-7"	24	4'-7"	-	-	-	-	-	-	-	-	-	-		
FPT	#4	STR.	1	34'-8"	1	37'-2"	-	-	-	-	2	34'-8"	2	37'-2"	1	34'-8"	1	37'-2"	-	-		
FPH	#4	BNT.	18	4'-9"	19	5'-4"	-	-	-	-	36	4'-9"	38	5'-4"	18	4'-9"	19	5'-4"	-	-		
EPH	#4	BNT.	-	-	-	-	43	3'-1"	43	3'-6"	-	-	-	-	43	3'-1"	43	3'-6"	86	3'-1"		

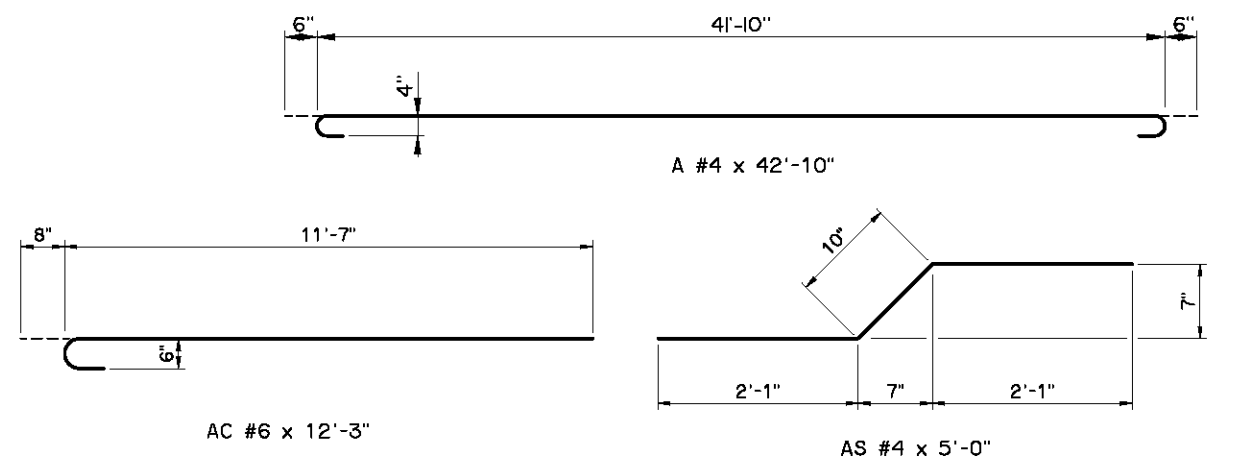


- ① Provide continuous reinforcing thru Construction Joints at Fixed Piers. Combine length shown with length for adjacent spans. Add length for any laps required. Do not lap within 10' of centerline of fixed pier. Minimum lap length is 1'-8".
- ② Provide continuous reinforcing thru Construction Joints at Fixed Piers. Combine length shown with length for adjacent spans. Add length for any laps required. Do not lap within 10' of centerline of fixed pier. Minimum lap length is 2'-6".
- ③ SL = Number of feet in Span Length (SL for 30' Span = 30)

NOTE:
 For Traffic Rail Bar List, see CONCRETE TRAFFIC RAIL WITH OPENINGS or CONCRETE TRAFFIC RAIL WITHOUT OPENINGS.
 For End Diaphragm Bar List, see END DIAPHRAGM DETAILS.
 For Intermediate Diaphragm Bar List, see INTERMEDIATE DIAPHRAGM DETAILS.



- EPH #4 x 3'-1" - Type II and B
 EPH #4 x 3'-1" - Type III and C
 EPH #4 x 3'-1" - Type IV
 EPH #4 x 3'-6" - Type BT-72 and J



APPROVED BY BRIDGE ENGINEER *David J. Smith* DATE *4/2/10*
 OKLAHOMA DEPT. OF TRANSPORTATION
 BRIDGE STANDARD (ENGLISH)
SUPERSTRUCTURE BAR LIST
 P. C. BEAMS
 CONVENTIONAL
 2009 SPECIFICATIONS | B40-C-SPR-BLIST-PCB | 01E
 B-270E