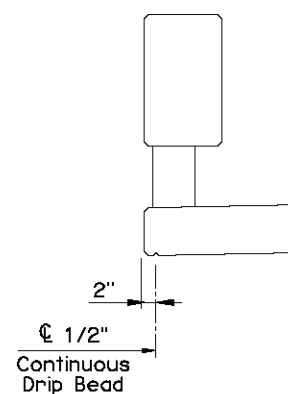


HALF SECTION AT INTERMEDIATE DIAPHRAGM

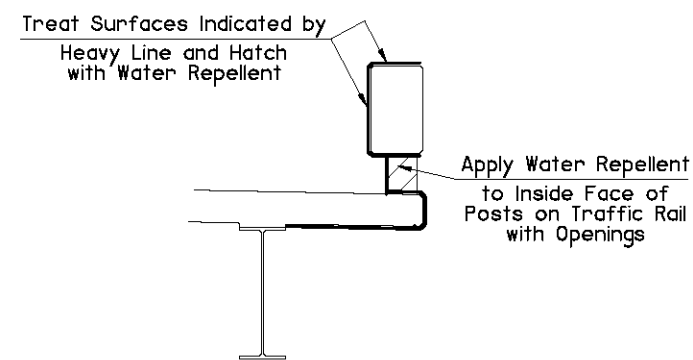
HALF SECTION AT END DIAPHRAGM

TYPICAL CROSS SECTION

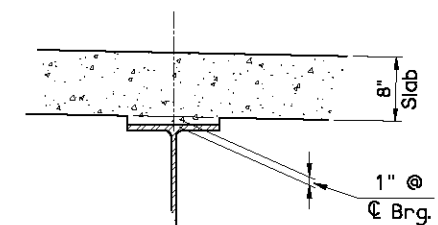
NOTE:
For LFD Operating Rating and
Dead Load Deflection Diagram,
see ROLLED BEAM DETAILS.



DETAIL A



WATER REPELLENT TREATMENT DETAILS



BEAM HAUNCH DETAIL

NOTE:
Plan quantities for CLASS AA CONCRETE include
Beam Haunches. The haunch height shown is the
theoretical haunch height at the centerline bearing
only, measured from the bottom of the Deck Slab
to the top of the Beam, and varies across the span.
Determine the actual haunch height (accounting for
beam camber, dead load deflection and roadway
grade) after erection of the beams and submit to
the Engineer for approval. The Engineer will not
measure differences between the theoretical
and the actual haunch heights for payment.

APPROVED BY BRIDGE ENGINEER <i>Scott J. Smith</i>	DATE <i>4/2/10</i>	
OKLAHOMA DEPT. OF TRANSPORTATION BRIDGE STANDARD (ENGLISH) TYPICAL CROSS SECTION ROLLED BEAMS CONVENTIONAL		
2009 SPECIFICATIONS	B40-C-XSECT-RB	01E B-263E