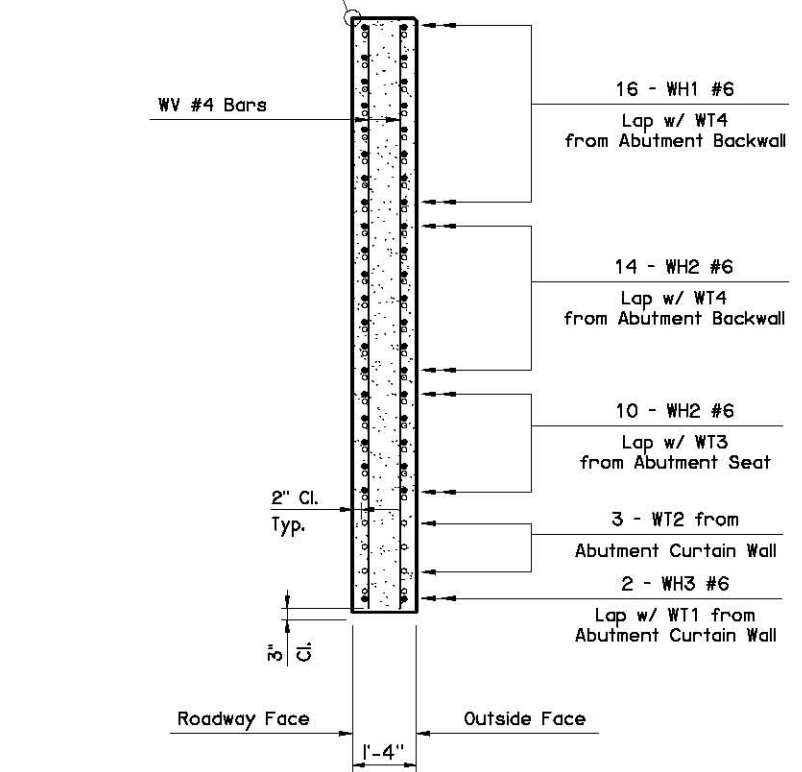
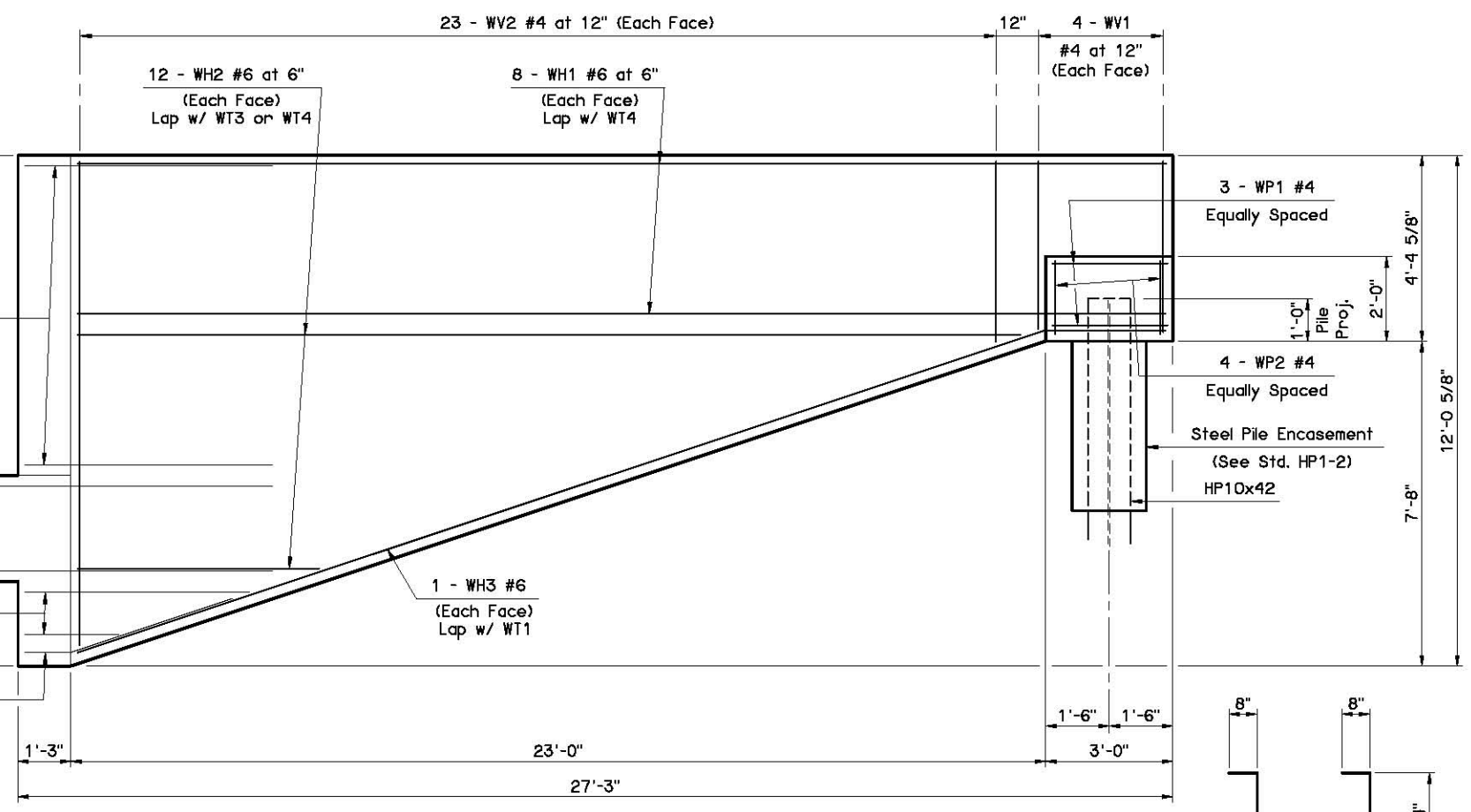
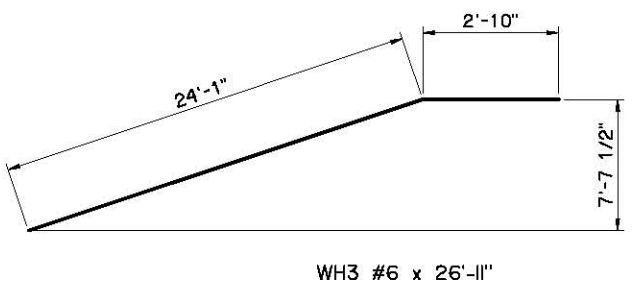


This standard may be used only if grade from Back Face of Abutment Seat to end of Wing is  $\pm 1.5\%$  maximum. Construct top of Abutment Wing level as shown.

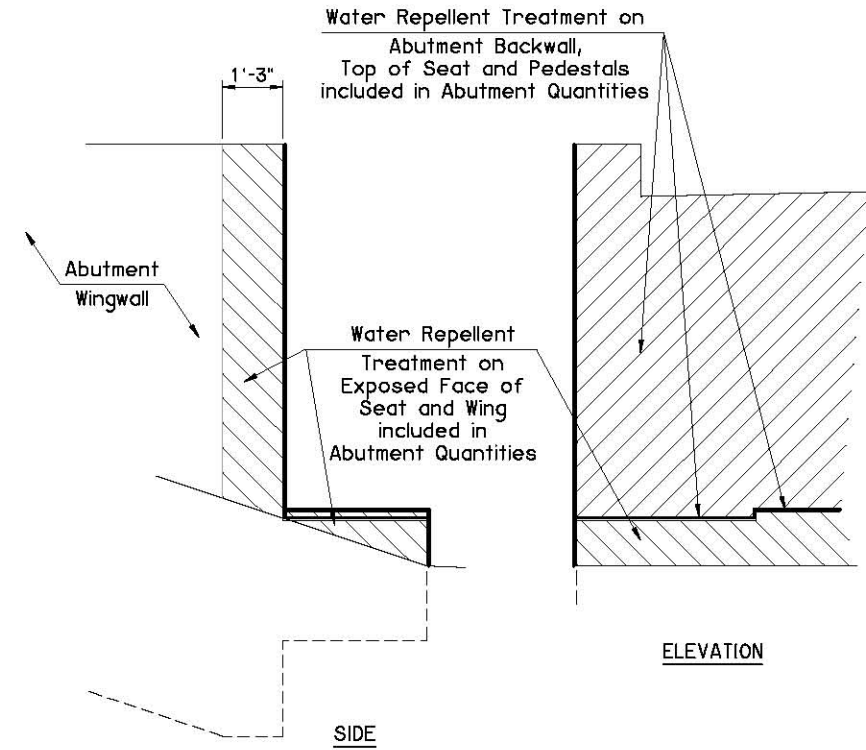
Top Corner of Roadway Face of Abutment Wing shall not be Chamfered



**SECTION THRU WING AT BACK FACE OF ABUTMENT SEAT**



**WING ELEVATION**



**WATER REPELLENT TREATMENT DETAILS**

ABUTMENT BAR LIST					
MARK	SIZE	NO.	FORM	LENGTH	LENGTH VARIATION
EPOXY COATED REINFORCING					
BH1	#4	12	STR.	44'-8"	
BH2	#4	10	BNT.	46'-0"	
BH3	#9	10	STR.	44'-8"	
BH4	#4	27	BNT.	5'-1"	
① BV1	#4	42	STR.	10'-8" Avg.	10'-6" to 10'-10"
① BV2	#5	42	STR.	10'-8" Avg.	10'-6" to 10'-10"
BV3	#4	8	STR.	11'-7"	
P1	#4	24	BNT.	5'-8"	
P2	#4	16	BNT.	7'-8"	
S1	#5	46	BNT.	12'-11"	
SC	#4	4	BNT.	3'-3"	

① 2 Sets of 21

MARK	SIZE	NO.	FORM	LENGTH	LENGTH VARIATION
EPOXY COATED REINFORCING					
WT1	#6	2	BNT.	11'-6"	
② WT2	#6	6	BNT.	9'-0" Avg.	6'-0" to 12'-0"
WT3	#6	10	BNT.	19'-0"	
WT4	#6	30	BNT.	13'-0"	
WH1	#6	32	STR.	25'-8"	
③ WH2	#6	48	STR.	14'-0" Avg.	5'-9" to 22'-3"
WH3	#6	4	BNT.	26'-11"	
WV1	#4	16	STR.	3'-11"	
④ WV2	#4	92	STR.	8'-1" Avg.	4'-7" to 11'-7"
WP1	#4	6	BNT.	8'-8"	
WP2	#4	8	STR.	1'-7"	

② 2 Sets of 3  
③ 4 Sets of 12  
④ 4 Sets of 23

ABUTMENT QUANTITIES		
ITEM	UNIT	TOTAL
SUBSTRUCTURE EXCAVATION COMMON	C.Y.	100
CLSM BACKFILL	C.Y.	140
CLASS A CONCRETE	C.Y.	57.2
EPOXY COATED REINFORCING STEEL	LB.	7,880
PILES, FURNISHED (HP10x42)	L.F.	
PILES, FURNISHED (HP12x53)	L.F.	
PILES, DRIVEN (HP10x42)	L.F.	
PILES, DRIVEN (HP12x53)	L.F.	
WATER REPELLENT (VISUALLY INSPECTED)	S.Y.	57
6" PERFORATED PIPE UNDERDRAIN ROUND	L.F.	42
6" NON-PERF. PIPE UNDERDRAIN RND.	L.F.	

APPROVED BY BRIDGE ENGINEER *Scott J. Smith* DATE *4/2/10*

OKLAHOMA DEPT. OF TRANSPORTATION  
BRIDGE STANDARD (ENGLISH)  
**ABUTMENT DETAILS**  
TYPE BT-72 AND TYPE J P.C. BEAMS  
CONVENTIONAL (SHEET 2 OF 2)

2009 SPECIFICATIONS | B40-C-ABUT-PC5-2 | 02E | B-247E