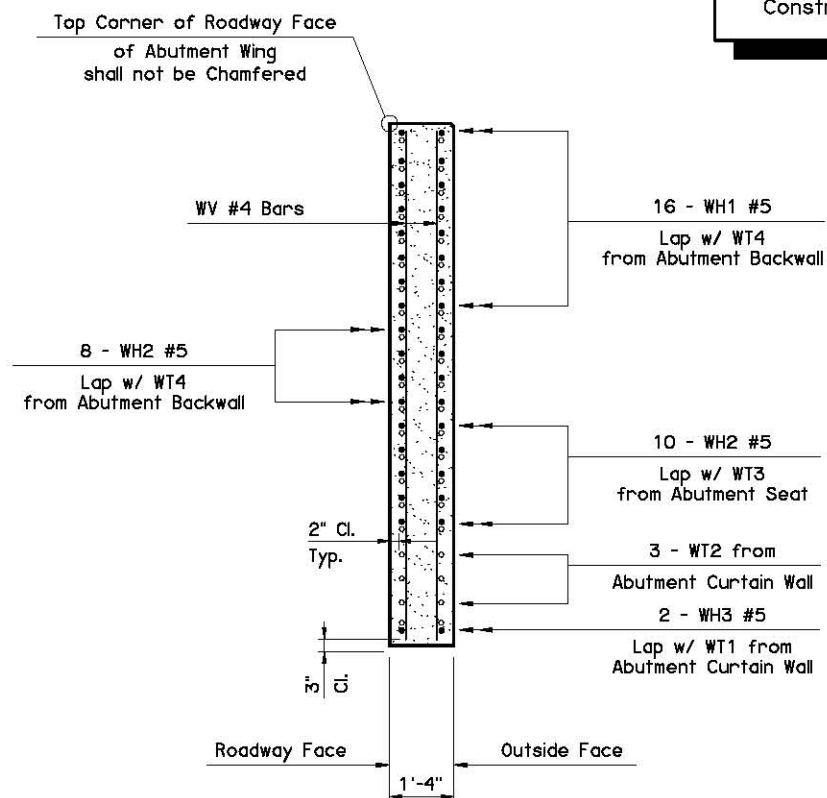
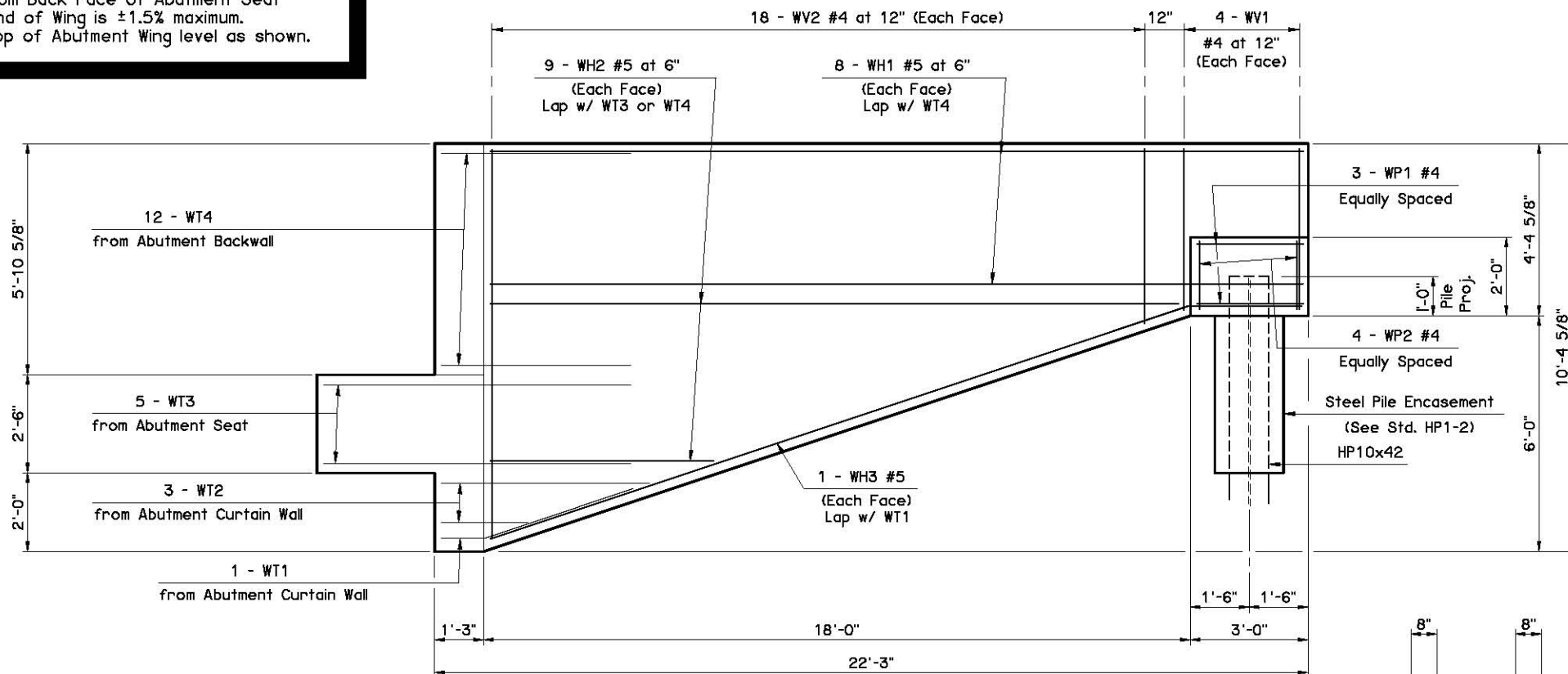


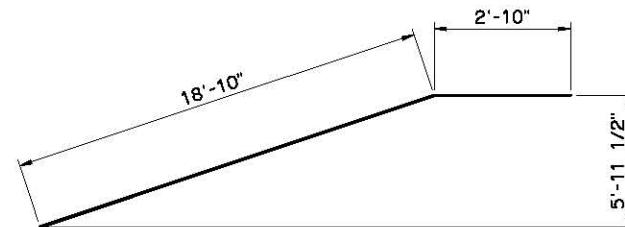
This standard may be used only if grade from Back Face of Abutment Seat to end of Wing is $\pm 1.5\%$ maximum. Construct top of Abutment Wing level as shown.



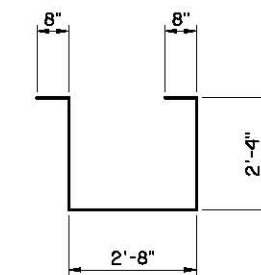
SECTION THRU WING AT BACK FACE OF ABUTMENT SEAT



WING ELEVATION



WH3 #5 x 2'-8"



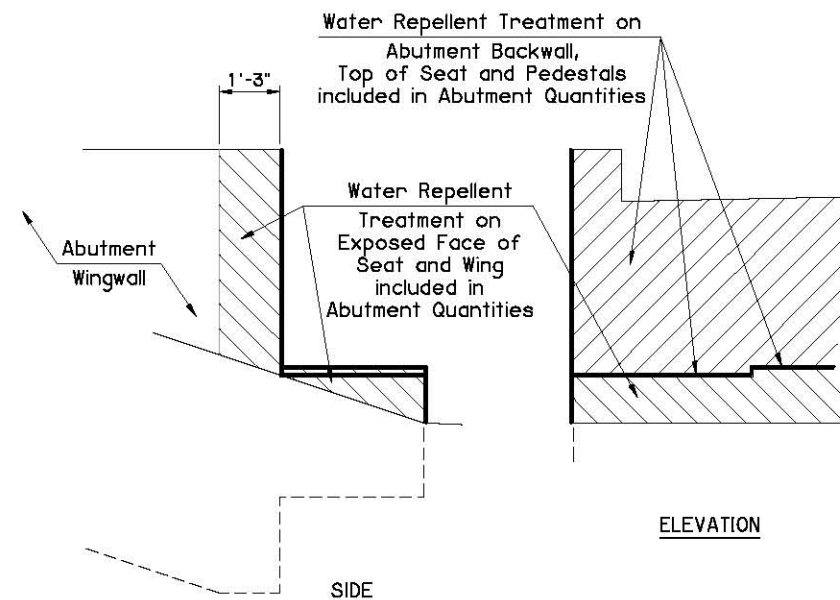
WPI #4 x 8'-8"

ABUTMENT BAR LIST					
MARK	SIZE	NO.	FORM	LENGTH	LENGTH VARIATION
EPOXY COATED REINFORCING					
BH1	#4	10	STR.	44'-8"	
BH2	#4	8	BNT.	46'-0"	
BH3	#9	10	STR.	44'-8"	
BH4	#4	21	BNT.	5'-1"	
① BV1	#4	42	STR.	9'-0" Avg.	8'-10" to 9'-2"
① BV2	#5	42	STR.	9'-0" Avg.	8'-10" to 9'-2"
BV3	#4	8	STR.	9'-11"	
P1	#4	24	BNT.	5'-8"	
P2	#4	16	BNT.	7'-4"	
S1	#5	68	BNT.	12'-11"	
SC	#4	4	BNT.	3'-3"	

① 2 Sets of 21

MARK	SIZE	NO.	FORM	LENGTH	LENGTH VARIATION
EPOXY COATED REINFORCING					
WT1	#5	2	BNT.	8'-6"	
② WT2	#5	6	BNT.	9'-0" Avg.	6'-0" to 12'-0"
WT3	#5	10	BNT.	17'-0"	
WT4	#5	24	BNT.	11'-0"	
WH1	#5	32	STR.	20'-8"	
③ WH2	#5	36	STR.	11'-10" Avg.	5'-9" to 17'-11"
WH3	#5	4	BNT.	21'-8"	
WV1	#4	16	STR.	3'-11"	
④ WV2	#4	72	STR.	7'-2" Avg.	4'-6" to 9'-10"
WP1	#4	6	BNT.	8'-8"	
WP2	#4	8	STR.	1'-7"	

② 2 Sets of 3
③ 4 Sets of 9
④ 4 Sets of 18



WATER REPELLENT TREATMENT DETAILS

ABUTMENT QUANTITIES		
ITEM	UNIT	TOTAL
SUBSTRUCTURE EXCAVATION COMMON	C.Y.	90
CLSM BACKFILL	C.Y.	103
CLASS A CONCRETE	C.Y.	48.0
EPOXY COATED REINFORCING STEEL	LB.	6,110
PILES, FURNISHED (HP10x42)	L.F.	
PILES, FURNISHED (HP12x53)	L.F.	
PILES, DRIVEN (HP10x42)	L.F.	
PILES, DRIVEN (HP12x53)	L.F.	
WATER REPELLENT (VISUALLY INSPECTED)	S.Y.	48
6" PERFORATED PIPE UNDERDRAIN ROUND	L.F.	42
6" NON-PERF. PIPE UNDERDRAIN RND.	L.F.	

APPROVED BY BRIDGE ENGINEER *Scott J. Smith* DATE 4/2/10

OKLAHOMA DEPT. OF TRANSPORTATION
BRIDGE STANDARD (ENGLISH)
ABUTMENT DETAILS
TYPE IV P.C. BEAMS
CONVENTIONAL (SHEET 2 OF 2)

2009 SPECIFICATIONS | B40-C-ABUT-PC4-2 | 02E | B-245E