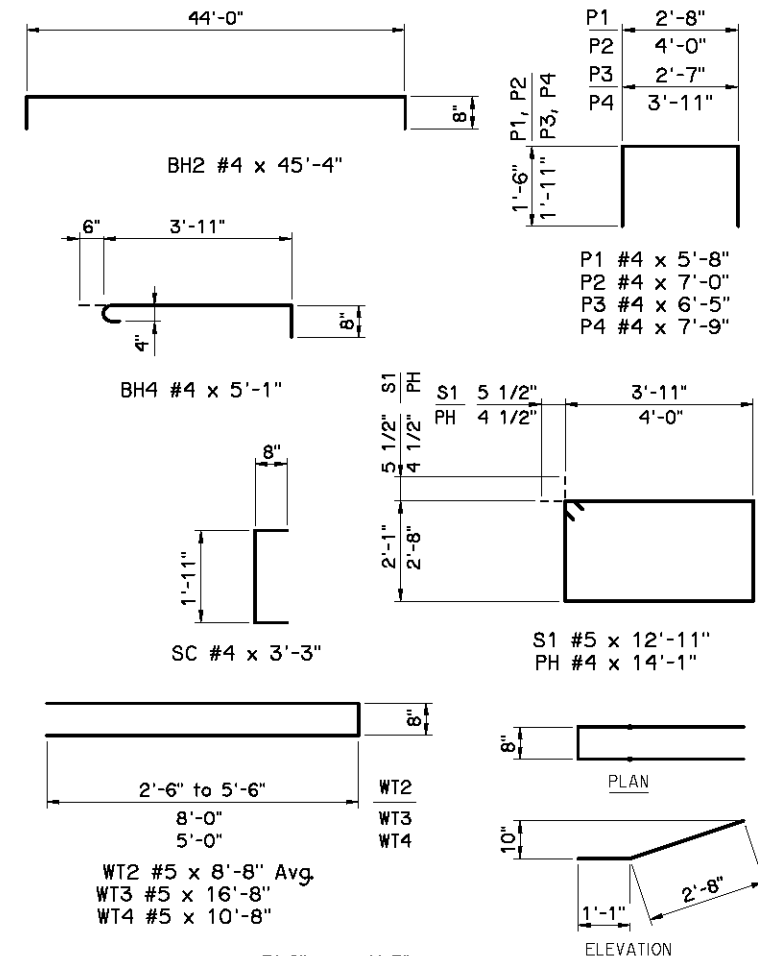
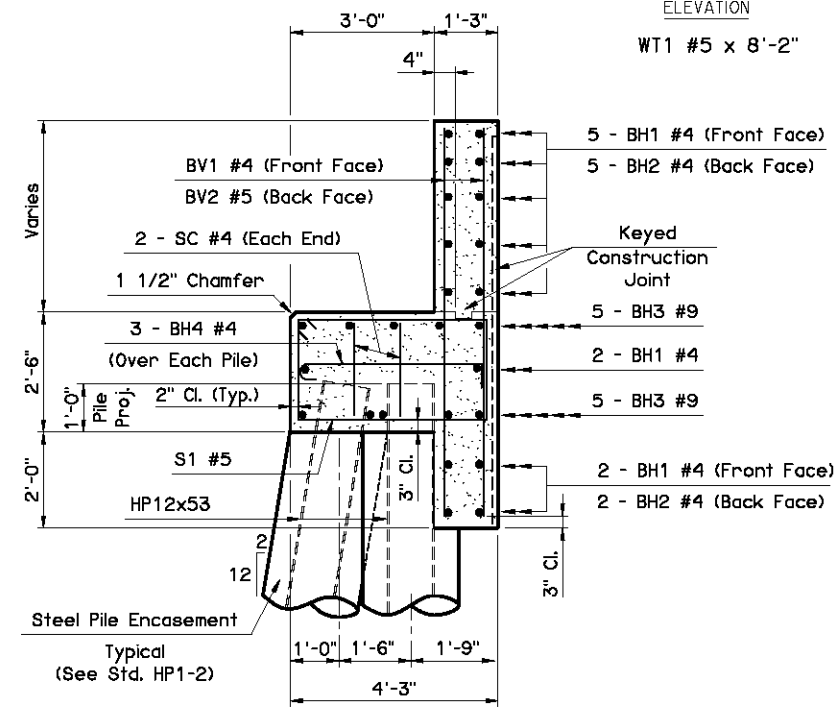
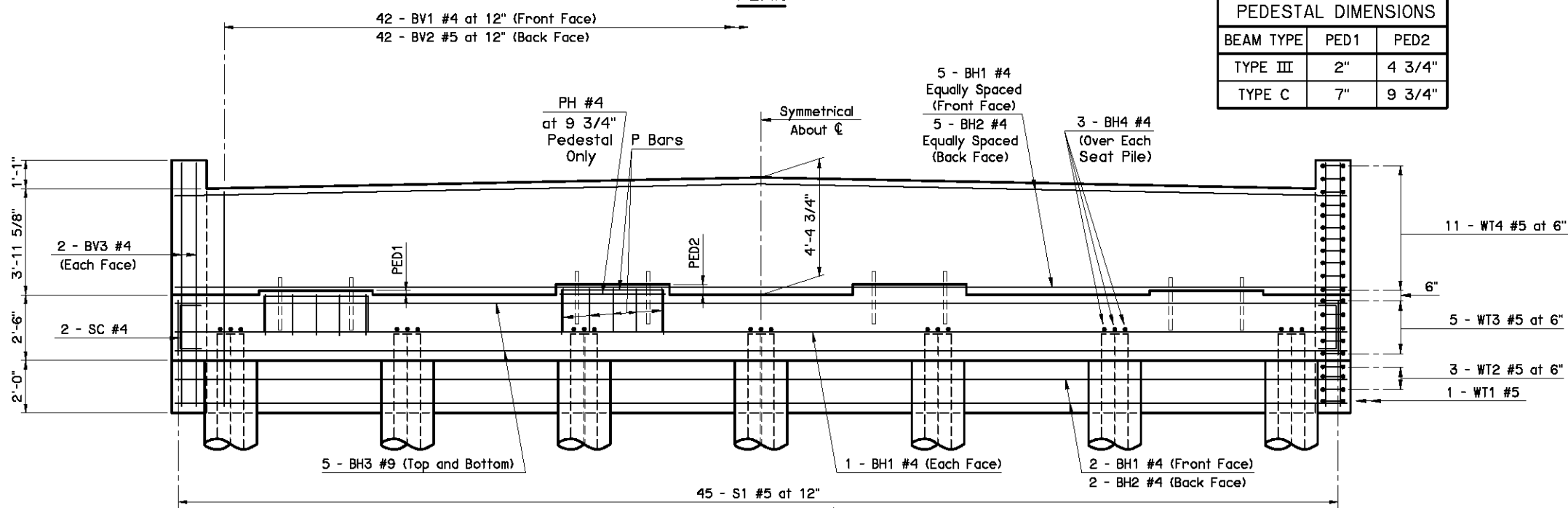


PILE SCHEDULE	
SPAN	MAXIMUM FACTORED PILE LOAD
45'	65.5 TON
50'	68.5 TON
55'	71.4 TON
60'	74.3 TON
65'	77.0 TON
70'	79.8 TON
75'	82.7 TON



PEDESTAL DIMENSIONS		
BEAM TYPE	PED1	PED2
TYPE III	2"	4 3/4"
TYPE C	7"	9 3/4"



TYPICAL SECTION THRU SEAT

APPROVED BY BRIDGE ENGINEER *David J. Smith* DATE 4/2/10

OKLAHOMA DEPT. OF TRANSPORTATION  
BRIDGE STANDARD (ENGLISH)  
**ABUTMENT DETAILS**  
TYPE III AND TYPE C P.C. BEAMS  
CONVENTIONAL (SHEET 1 OF 2)

2009 SPECIFICATIONS | B40-C-ABUT-PC3-1 | 01E  
B-242E