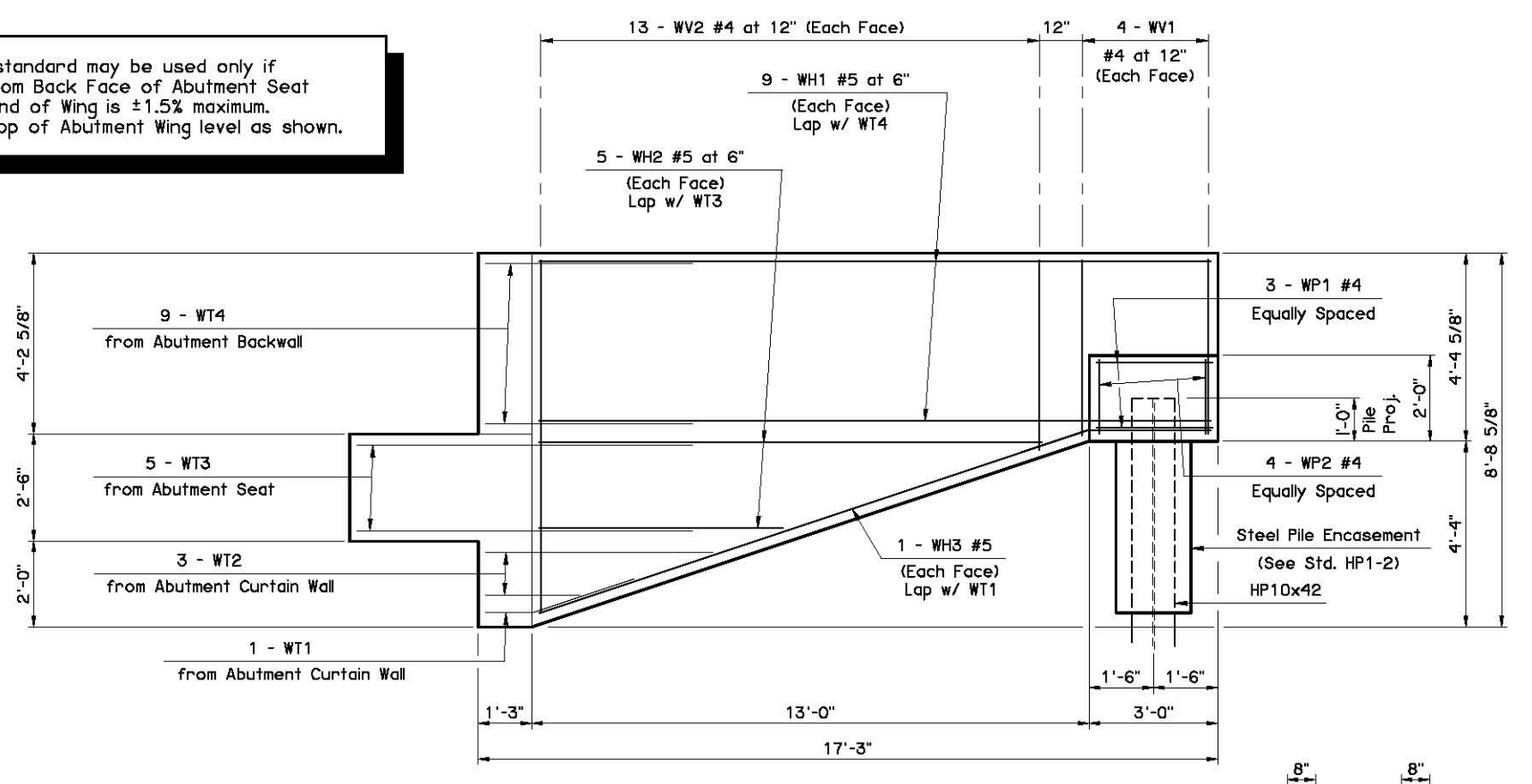
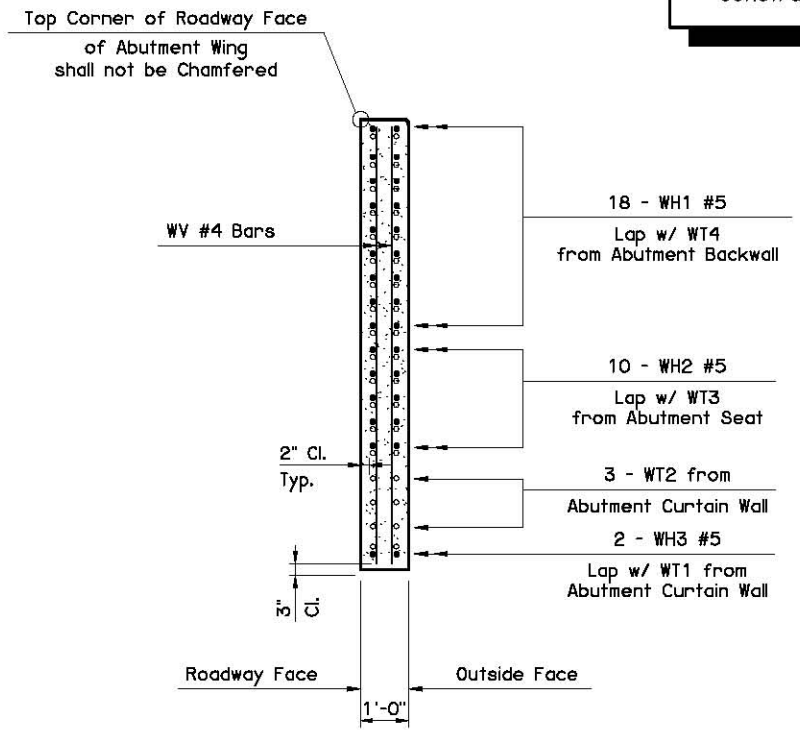


This standard may be used only if grade from Back Face of Abutment Seat to end of Wing is $\pm 1.5\%$ maximum. Construct top of Abutment Wing level as shown.



SECTION THRU WING AT BACK FACE OF ABUTMENT SEAT

WING ELEVATION



ABUTMENT BAR LIST					
MARK	SIZE	NO.	FORM	LENGTH	LENGTH VARIATION
EPOXY COATED REINFORCING					
BH1	#4	8	STR.	44'-0"	
BH2	#4	6	BNT.	45'-4"	
BH3	#9	10	STR.	44'-0"	
BH4	#4	21	BNT.	5'-1"	
① BV1	#4	42	STR.	7'-5" Avg.	7'-3" to 7'-7"
① BV2	#5	42	STR.	7'-5" Avg.	7'-3" to 7'-7"
BV3	#4	8	STR.	8'-3"	
S1	#5	45	BNT.	12'-11"	
SC	#4	4	BNT.	3'-3"	

MARK	SIZE	NO.	FORM	LENGTH	LENGTH VARIATION
EPOXY COATED REINFORCING					
WT1	#5	2	BNT.	8'-2"	
② WT2	#5	6	BNT.	8'-8" Avg.	5'-8" to 11'-8"
WT3	#5	10	BNT.	16'-8"	
WT4	#5	18	BNT.	10'-8"	
WH1	#5	36	STR.	15'-8"	
③ WH2	#5	20	STR.	8'-9" Avg.	5'-9" to 11'-9"
WH3	#5	4	BNT.	16'-4"	
WV1	#4	16	STR.	3'-11"	
④ WV2	#4	52	STR.	6'-3" Avg.	4'-3" to 8'-3"
WP1	#4	6	BNT.	8'-8"	
WP2	#4	8	STR.	1'-7"	

① 2 Sets of 21

② 2 Sets of 3
③ 4 Sets of 5
④ 4 Sets of 13

ABUTMENT BAR LIST - TYPE II					
MARK	SIZE	NO.	FORM	LENGTH	LENGTH VARIATION
EPOXY COATED REINFORCING					
P1	#4	20	BNT.	5'-8"	
P2	#4	16	BNT.	6'-8"	

ABUTMENT BAR LIST - TYPE B					
MARK	SIZE	NO.	FORM	LENGTH	LENGTH VARIATION
EPOXY COATED REINFORCING					
P3	#4	20	BNT.	5'-11"	
P4	#4	16	BNT.	6'-11"	
PH	#4	2	BNT.	13'-5"	

ABUTMENT QUANTITIES		
ITEM	UNIT	TOTAL
SUBSTRUCTURE EXCAVATION COMMON	C.Y.	80
CLSM BACKFILL	C.Y.	80
CLASS A CONCRETE	C.Y.	37.3
EPOXY COATED REINFORCING STEEL	LB.	4,930
PILES, FURNISHED (HP10x42)	L.F.	
PILES, FURNISHED (HP12x53)	L.F.	
PILES, DRIVEN (HP10x42)	L.F.	
PILES, DRIVEN (HP12x53)	L.F.	
WATER REPELLENT (VISUALLY INSPECTED)	S.Y.	40
6" PERFORATED PIPE UNDERDRAIN ROUND	L.F.	42
6" NON-PERF. PIPE UNDERDRAIN RND.	L.F.	

APPROVED BY BRIDGE ENGINEER *Scott J. Smith* DATE *4/2/10*

OKLAHOMA DEPT. OF TRANSPORTATION
BRIDGE STANDARD (ENGLISH)
ABUTMENT DETAILS
TYPE II AND TYPE B P.C. BEAMS
CONVENTIONAL (SHEET 2 OF 2)

2009 SPECIFICATIONS | B40-C-ABUT-PC2-2 | 01E
B-241E