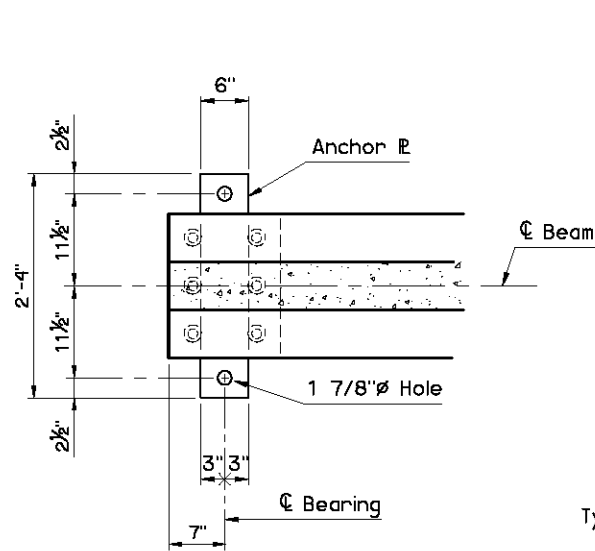
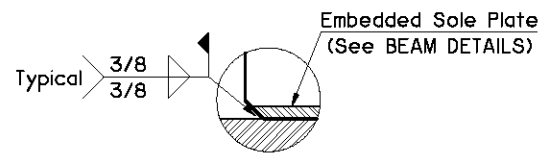


BEVELED ANCHOR PLATE DETAIL

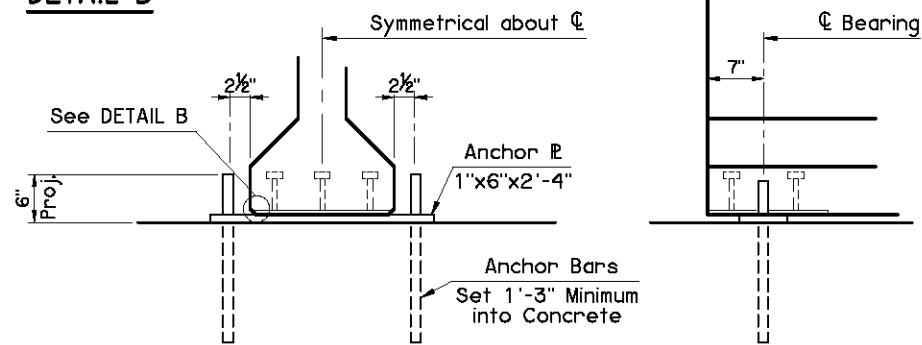
NOTE: Beveled Anchor Plate is required when angle between beam supports due to roadway grade exceeds 1%. Bevel Slope to match angle between beam supports and horizontal.



PLAN



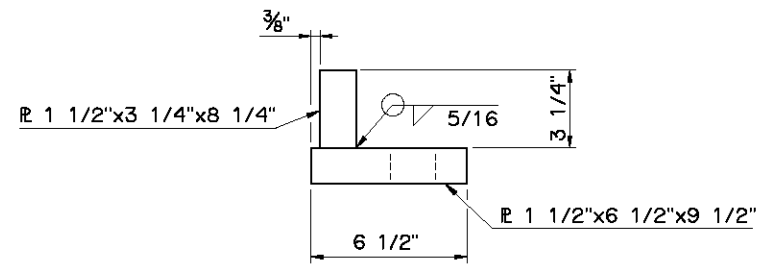
DETAIL B



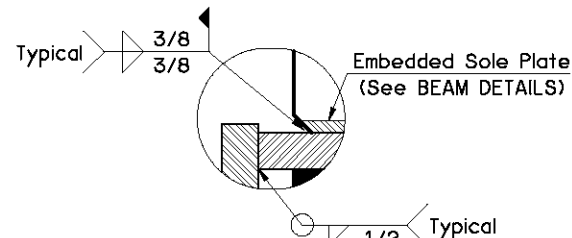
END VIEW

SIDE VIEW

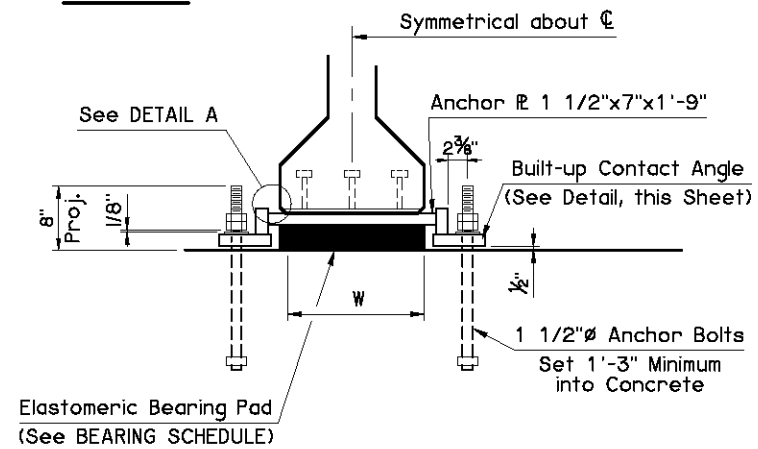
ABUTMENT FIXED BEARING DETAILS



BUILT-UP CONTACT ANGLE DETAIL



DETAIL A



END VIEW

SIDE VIEW

PIER EXPANSION BEARING DETAILS

① Center Anchor Bolts in slots during setting of beams. Dimension may vary depending on temperature at the time of beam setting.

EXPANSION BEARING ASSEMBLY NOTES:

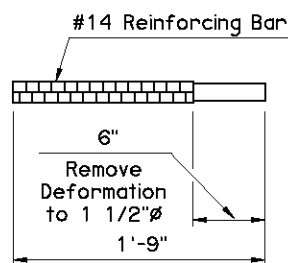
Provide structural steel for Anchor Plates and Built-up Contact Angles in accordance with ASTM A240 (Austenitic Stainless Steel, Type 316, Charpy V-Notch testing not required). For Anchor Bolts, provide continuously threaded bars in accordance with ASTM A320, Class 2, Grade B8M (Austenitic Stainless Steel, Type 316, Charpy V-Notch testing not required). Use austenitic stainless steel nuts and washers conforming to ASTM A194, Grade 8M and ASTM A320, respectively. Perform all welding consistent with procedures for stainless steel.

FIXED BEARING ASSEMBLY NOTES:

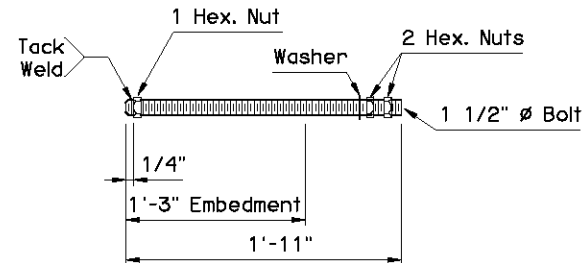
Provide structural steel for Anchor Plates in accordance with AASHTO M270 (ASTM A709), Grade 50W (Weathering Steel, Charpy V-Notch testing not required). For Anchor Bars, provide a reinforcing bar in accordance with AASHTO M31, Grade 60.

BEARING SCHEDULE						
SPAN	60 DUROMETER ELASTOMERIC BEARING PAD			MAXIMUM EXPANSION LENGTH WITHOUT BONDING	MAXIMUM EXPANSION LENGTH WITH BONDING ②	
	SIZE (T x L x W)	COVER LAYER	INNER LAYER			LAMINATE PLATE
30'	3 1/8"x5 1/2"x1'-6"	2 - 1/4"	5 - 3/8"	6 - 1/8"	140'	235'
35'	3 1/8"x6"x1'-6"	2 - 1/4"	5 - 3/8"	6 - 1/8"	140'	230'
40'	3 1/8"x6 1/2"x1'-6"	2 - 1/4"	5 - 3/8"	6 - 1/8"	140'	220'
45'	3 1/8"x6 1/2"x1'-6"	2 - 1/4"	5 - 3/8"	6 - 1/8"	165'	220'
50'	3 1/8"x6 1/2"x1'-6"	2 - 1/4"	5 - 3/8"	6 - 1/8"	195'	225'
55'	3 1/8"x6 1/2"x1'-6"	2 - 1/4"	5 - 3/8"	6 - 1/8"	220'	230'

② Bond to Anchor Plate in accordance with Subsection 733.06.B of the Standard Specifications.



ABUTMENT ANCHOR BAR DETAIL



PIER ANCHOR BOLT DETAIL

APPROVED BY BRIDGE ENGINEER *David J. Smith* DATE *4/2/10*

OKLAHOMA DEPT. OF TRANSPORTATION
BRIDGE STANDARD (ENGLISH)
BEARING DETAILS
TYPE II AND TYPE B P.C. BEAMS
INTEGRAL