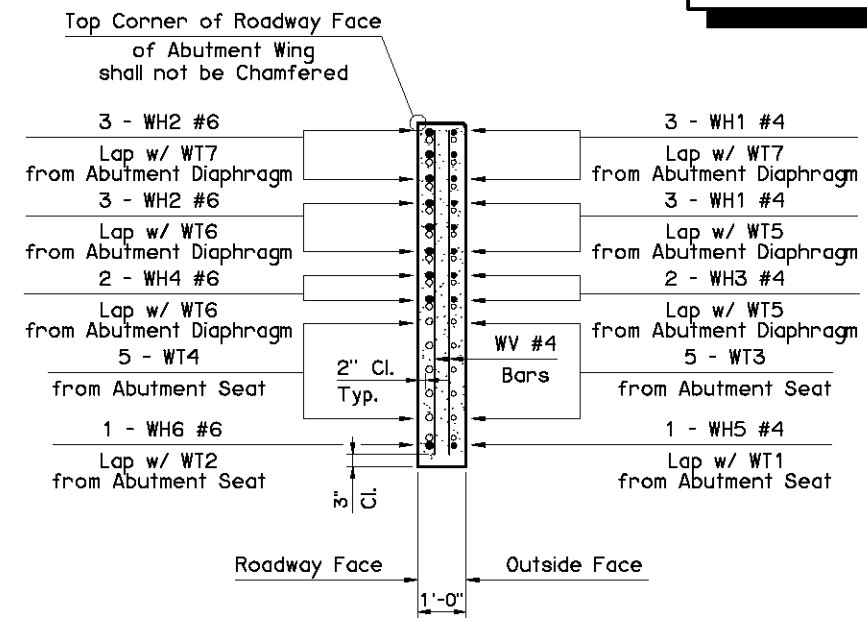
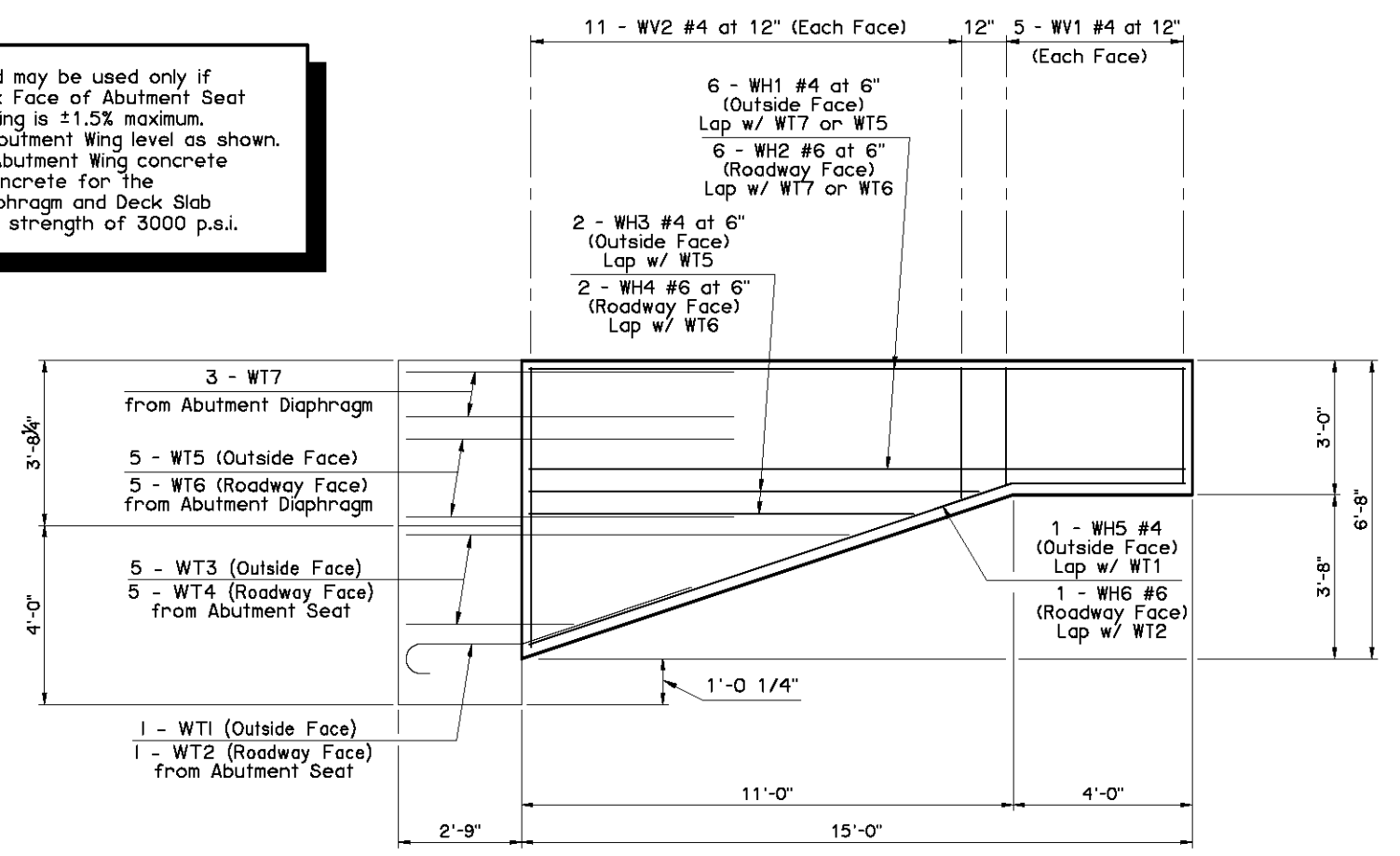


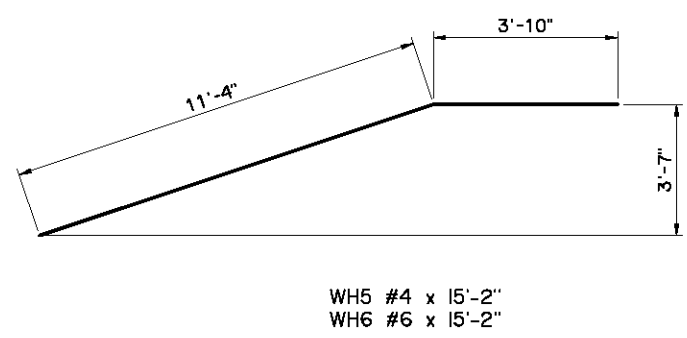
This standard may be used only if grade from Back Face of Abutment Seat to end of Wing is $\pm 1.5\%$ maximum. Construct top of Abutment Wing level as shown. Do not place Abutment Wing concrete until concrete for the Abutment Diaphragm and Deck Slab have attained a strength of 3000 p.s.i.



SECTION THRU WING AT BACK FACE OF ABUTMENT SEAT



WING ELEVATION



ABUTMENT QUANTITIES		
ITEM	UNIT	TOTAL
SUBSTRUCTURE EXCAVATION COMMON	C.Y.	35
CLSM BACKFILL	C.Y.	58
CLASS A CONCRETE	C.Y.	24.2
EPOXY COATED REINFORCING STEEL	LB.	3,210
PILES, FURNISHED (HP10x42)	L.F.	
PILES, DRIVEN (HP10x42)	L.F.	
WATER REPELLENT (VISUALLY INSPECTED)	S.Y.	12
6" PERFORATED PIPE UNDERDRAIN ROUND	L.F.	42
6" NON-PERF. PIPE UNDERDRAIN RND.	L.F.	

ABUTMENT WING BAR LIST ONE SHOWN, TWO REQUIRED					
MARK	SIZE	NO.	FORM	LENGTH	LENGTH VARIATION
EPOXY COATED REINFORCING					
WH1	#4	6	STR.	14'-8"	
WH2	#6	6	STR.	14'-8"	
WH3	#4	2	STR.	9'-2" AVG.	8'-5" to 9'-11"
WH4	#6	2	STR.	9'-2" AVG.	8'-5" to 9'-11"
WH5	#4	1	BNT.	15'-2"	
WH6	#6	1	BNT.	15'-2"	
WV1	#4	10	STR.	2'-7"	
WV2	#4	22	STR.	4'-6" AVG.	2'-10" to 6'-2"

① 2 Sets of 11

NOTE:
See TYPICAL CROSS SECTION for extent of Water Repellent Treatment.

APPROVED BY BRIDGE ENGINEER *Scott J. Smith* DATE *4/2/10*

OKLAHOMA DEPT. OF TRANSPORTATION
BRIDGE STANDARD (ENGLISH)
ABUTMENT DETAILS
30' THRU 50' ROLLED BEAM SPANS
INTEGRAL (SHEET 2 OF 2)

2009 SPECIFICATIONS | B40-I-ABUT-RB-3050-2 | 01E
B-49E