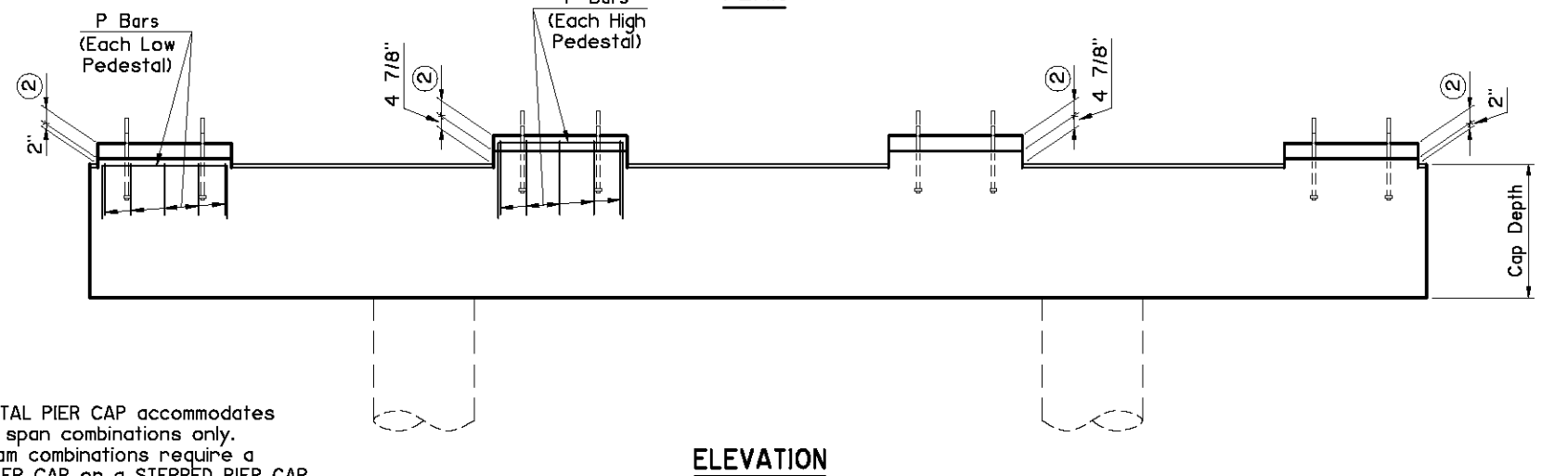
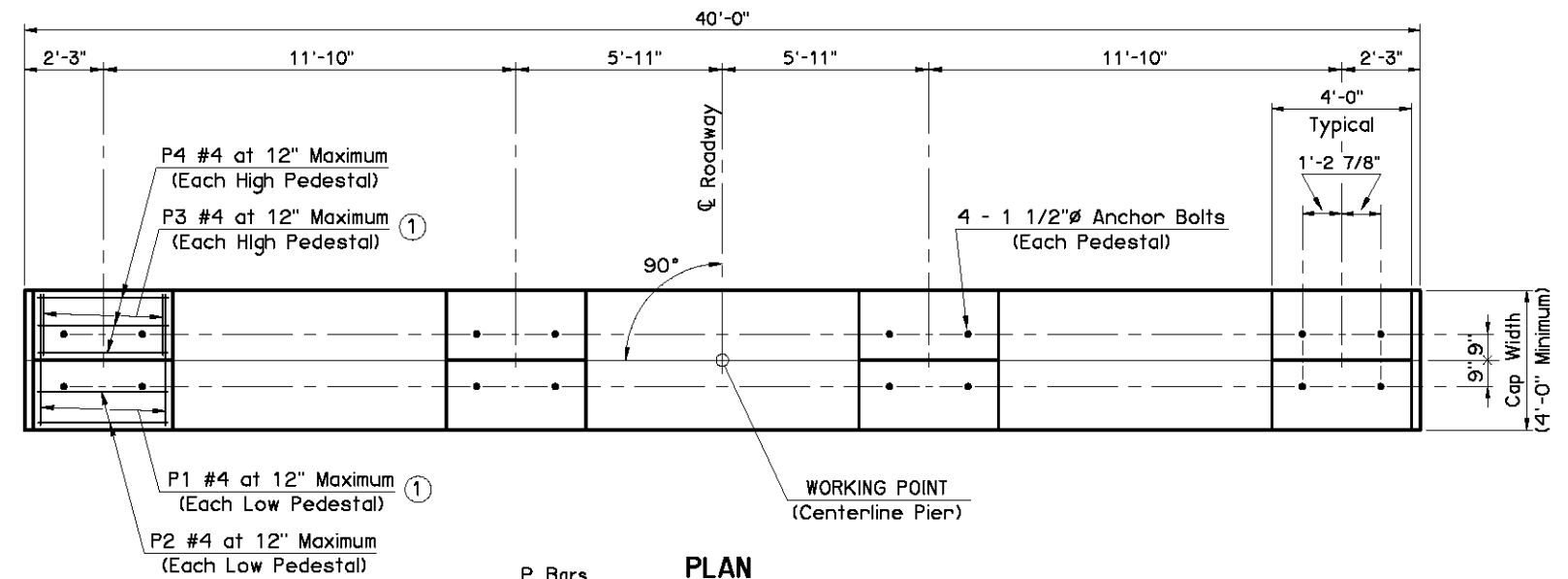
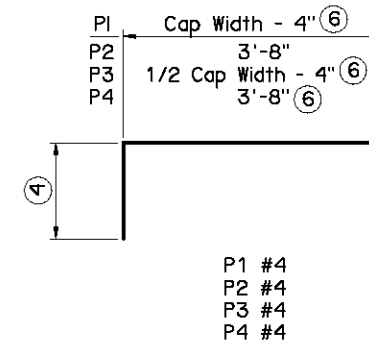
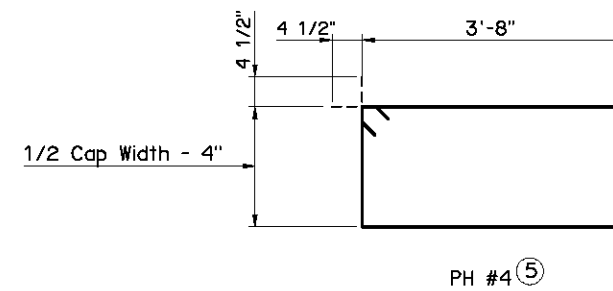
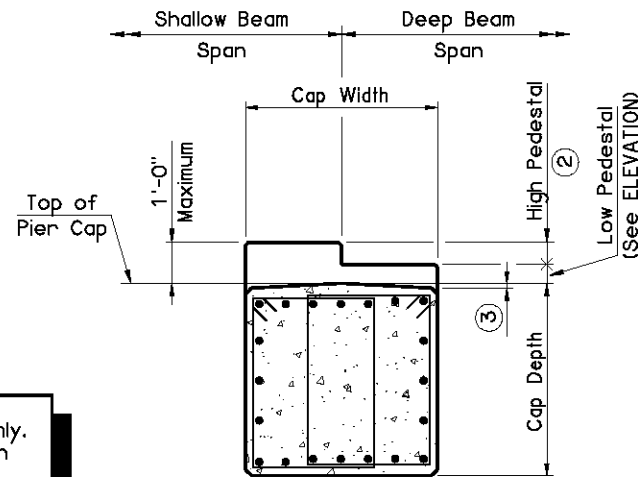


DETAIL OF PEDESTAL REQUIRING PH BARS



NOTE:
SPLIT PEDESTAL PIER CAP accommodates Rolled Beam span combinations only. Precast Beam combinations require a STANDARD PIER CAP or a STEPPED PIER CAP.



NOTE:
Cap reinforcing shown is for illustration only.

Cap Details shown are for informational purposes only. The Design Engineer will apply the information shown in a comprehensive Bridge Pier design. The Bridge Pier design shall account for, but not be limited to, eccentricity of live loads and application of collision forces (if necessary). The Design Engineer will produce a complete set of Bridge Pier details which shows the applicable information from this standard with the balance of information necessary for construction.

- ① Minimum pedestal reinforcing shown. Additional reinforcing to satisfy Concrete Breakout Anchorage Requirements may be required.
- ② Provide High Pedestal dimension equal to the difference in "H" dimensions found on the LONGITUDINAL SECTION for each span.
- ③ Provide dimension corresponding to 5% minimum slope.
- ④ Provide bar length to extend 1'-0" minimum below top of Pier Cap.
- ⑤ Required when High Pedestal height plus Low Pedestal height exceeds 6". Provide PH bars spaced at 6" maximum.
- ⑥ Reduce dimension by 1" if PH bars are required.

APPROVED BY BRIDGE ENGINEER *David J. Smith* DATE *4/2/10*

OKLAHOMA DEPT. OF TRANSPORTATION
BRIDGE STANDARD (ENGLISH)

SPLIT PEDESTAL PIER CAP GUIDELINES

2009 SPECIFICATIONS | B40-PIER-SPED | 01E
B-30E