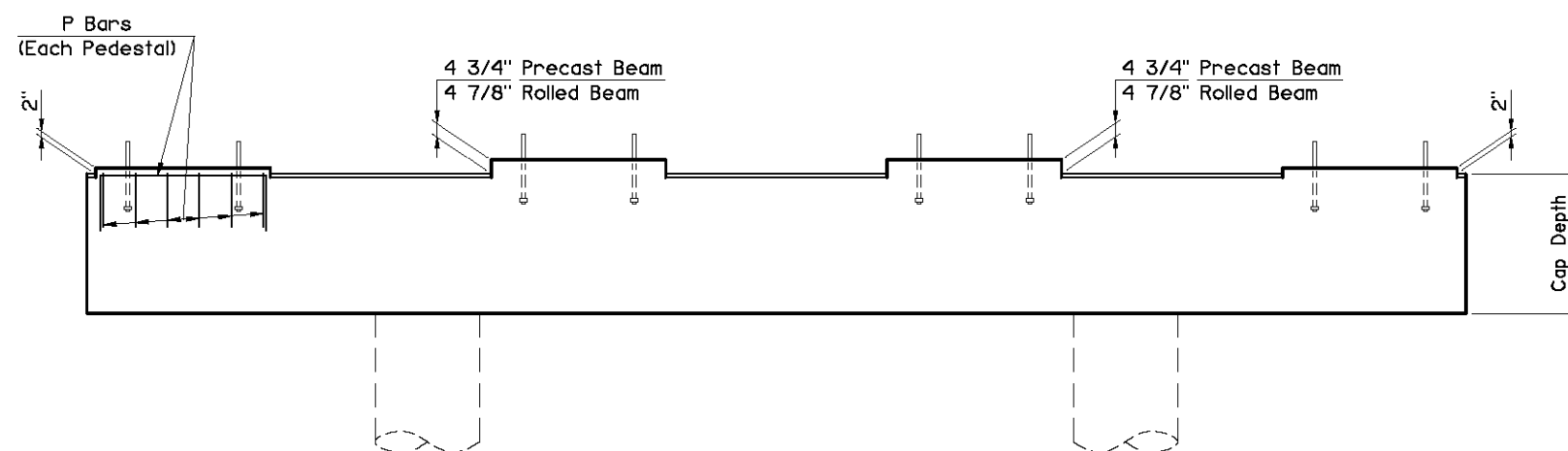
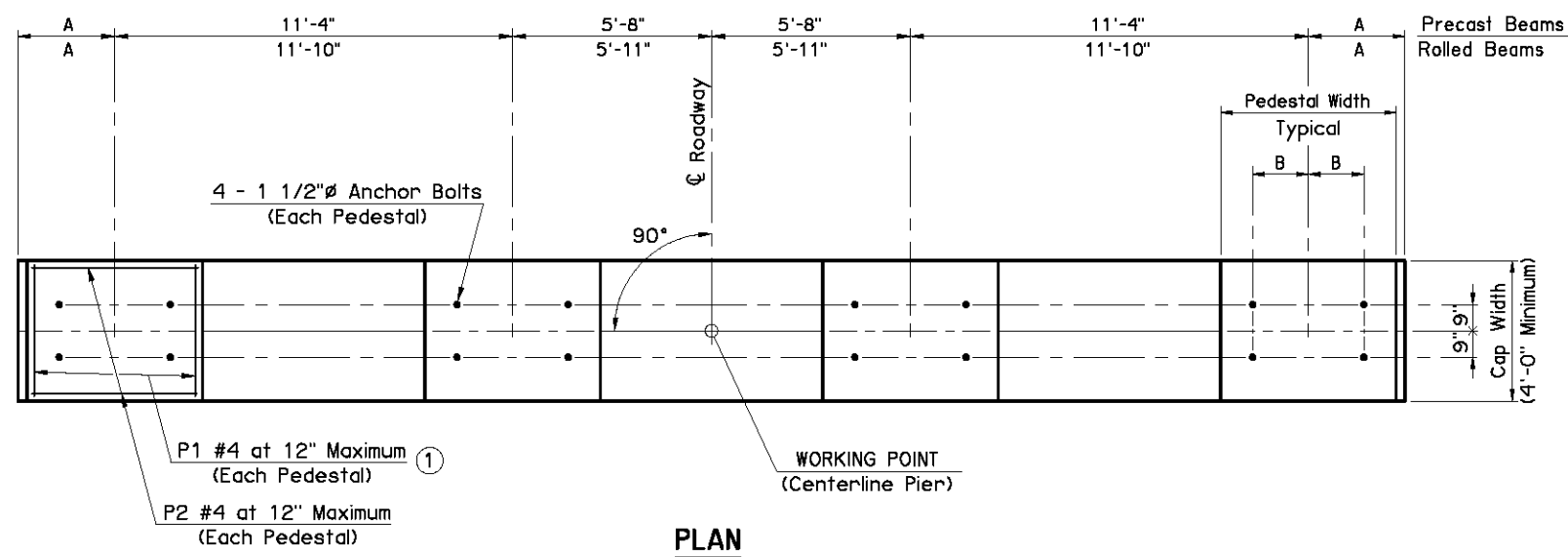


**TABLE OF ROLLED BEAM SPAN COMBINATIONS ACCOMMODATED BY STANDARD PIER CAP**

PRECEDING SPAN	FOLLOWING SPAN
30'	30'
35'	35' thru 45'
40'	35' thru 45'
45'	35' thru 45'
50'	50'
55'	55' or 60'
60'	55' or 60'
65'	65' thru 80'
70'	65' thru 85'
75'	65' thru 80'
80'	65' thru 85'
85'	70', 80' thru 95'
90'	85' thru 100'
95'	85' thru 100'
100'	90' thru 100'

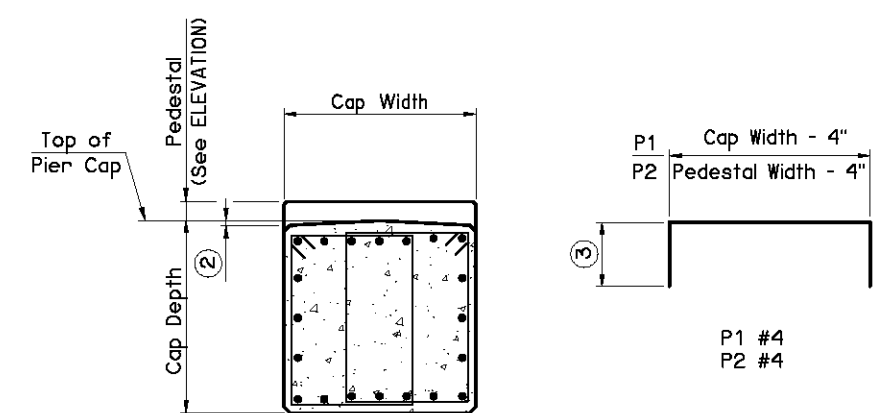
NOTE: STANDARD PIER CAP accommodates Precast Beams of the same type for the preceding and following spans and the Rolled Beam span combinations shown in the table on this sheet. All other span combinations require a SPLIT PEDESTAL PIER CAP or a STEPPED PIER CAP.



**DIMENSION SCHEDULE**

BEAM TYPE	A	B	PEDESTAL WIDTH
TYPE II PRECAST BEAM	2'-3"	1'-2 3/8"	4'-0"
TYPE B PRECAST BEAM	2'-3"	1'-2 3/8"	4'-0"
TYPE III PRECAST BEAM	2'-5"	1'-4 3/8"	4'-4"
TYPE C PRECAST BEAM	2'-5"	1'-4 3/8"	4'-4"
TYPE IV PRECAST BEAM	2'-7"	1'-6 3/8"	4'-8"
TYPE BT-72 PRECAST BEAM	2'-7"	1'-6 3/8"	4'-8"
TYPE J PRECAST BEAM	2'-9"	1'-8 3/8"	5'-0"
ROLLED BEAM	2'-3"	1'-2 7/8"	4'-0"

Cap Details shown are for informational purposes only. The Design Engineer will apply the information shown in a comprehensive Bridge Pier design. The Bridge Pier design shall account for, but not be limited to, eccentricity of live loads and application of collision forces (if necessary). The Design Engineer will produce a complete set of Bridge Pier details which shows the applicable information from this standard with the balance of information necessary for construction.



- ① Minimum pedestal reinforcing shown. Additional reinforcing to satisfy Concrete Breakout Anchorage Requirements may be required.
- ② Provide dimension corresponding to 5% minimum slope.
- ③ Provide bar length to extend 1'-0" minimum below top of Pier Cap.

NOTE: Cap reinforcing shown is for illustration only.

APPROVED BY BRIDGE ENGINEER *Scott J. Smith* DATE *4/2/10*

OKLAHOMA DEPT. OF TRANSPORTATION  
BRIDGE STANDARD (ENGLISH)

**STANDARD PIER CAP GUIDELINES**

2009 SPECIFICATIONS | B40-PIER-STD | 01E  
B-29E