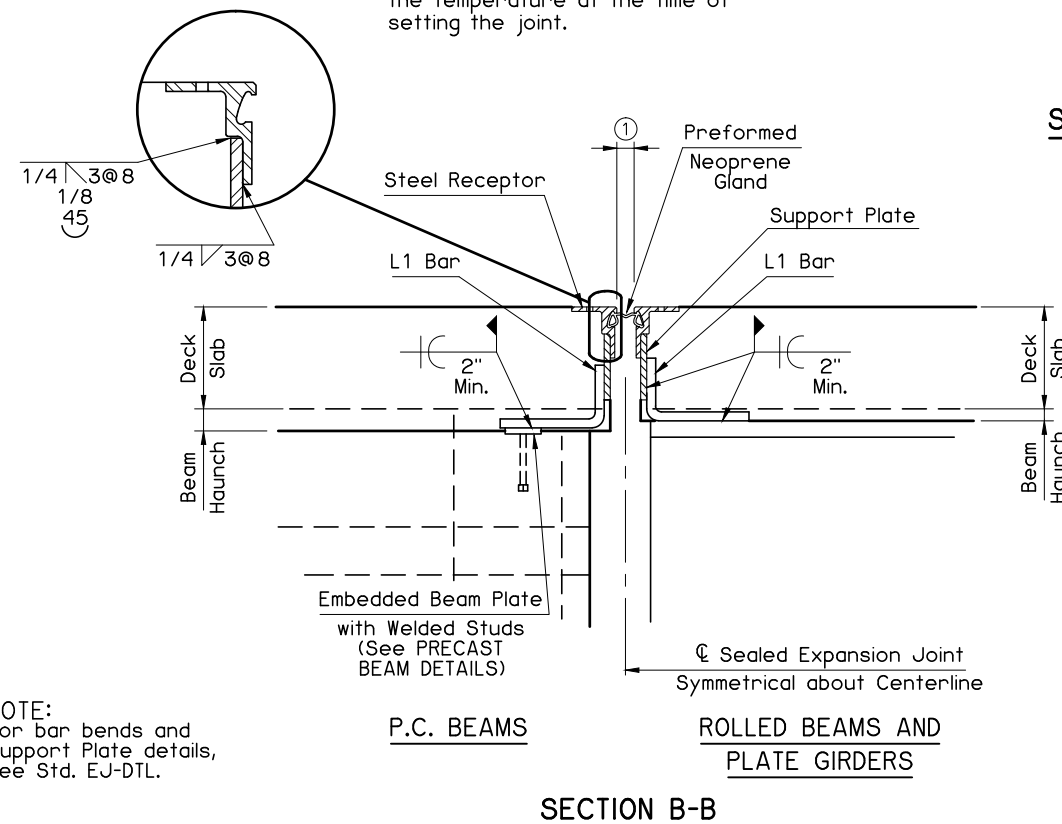
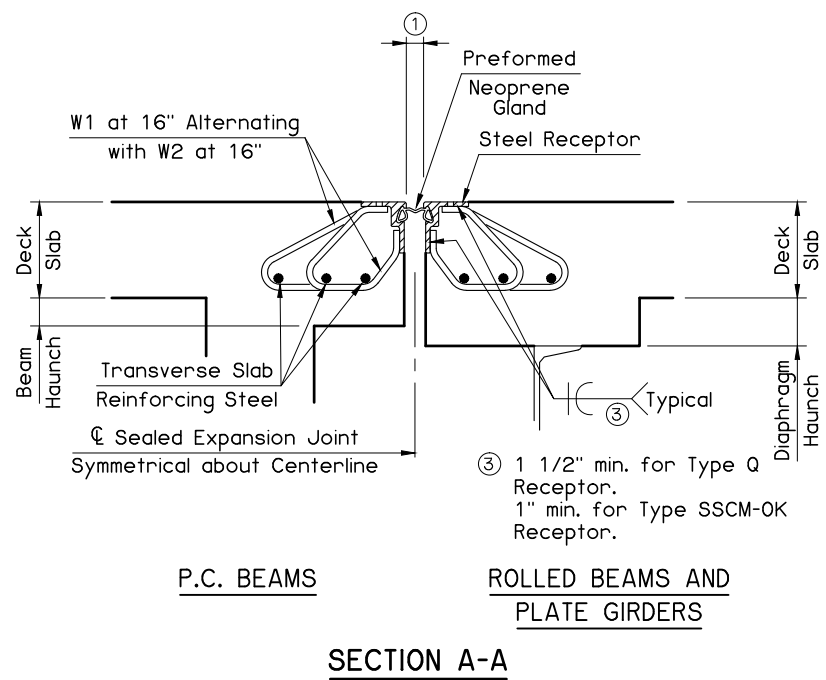


① Design Engineer to provide schedule of joint opening size required by the temperature at the time of setting the joint.



TEMPERATURE CHANGE PER EVERY 1/8" CHANGE IN BRIDGE LENGTH ②					
BEAM TYPE	TOTAL EXPANSION LENGTH				
	100'	200'	300'	400'	500'
CONCRETE	17.3°F	8.7°F	5.8°F	4.3°F	3.5°F
STEEL	16.0°F	8.0°F	5.3°F	4.0°F	3.2°F

② Table is for assisting in determining joint opening size. A nominal 2" joint opening corresponds to 43°F for new prestressed concrete beams and 60°F for steel beams. Decrease opening as temperature rises and increase as temperature drops.

NOTE:  
For bar bends and Support Plate details, see Std. EJ-DTL.

APPROVED BY BRIDGE ENGINEER *Sto. J.* DATE 12-20-16

OKLAHOMA DEPT. OF TRANSPORTATION  
BRIDGE STANDARD (ENGLISH)

**SQUARE SEALED EXPANSION JOINT CONVENTIONAL**

2009 SPECIFICATIONS EJ-SQ 04E B-08E