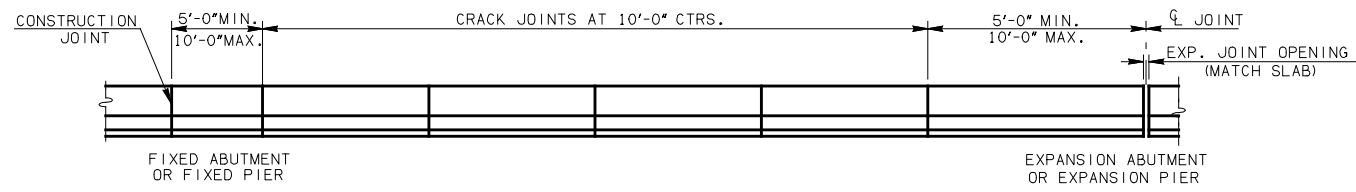
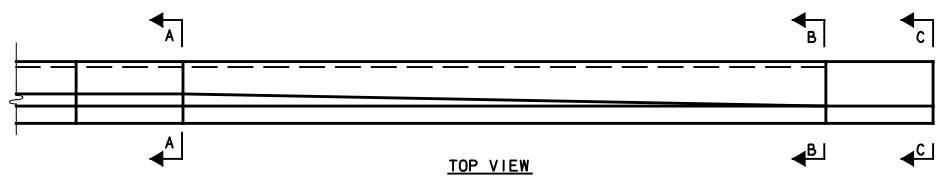


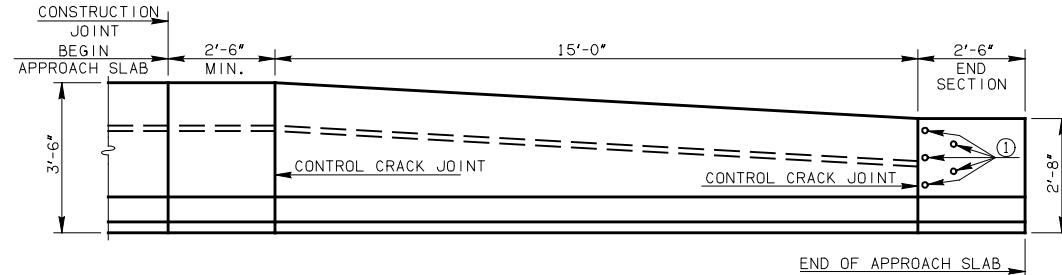
CONTROL CRACK JOINT LOCATIONS FOR SPANS WITH DRAINS



CONTROL CRACK JOINT LOCATIONS FOR SPANS WITHOUT DRAINS



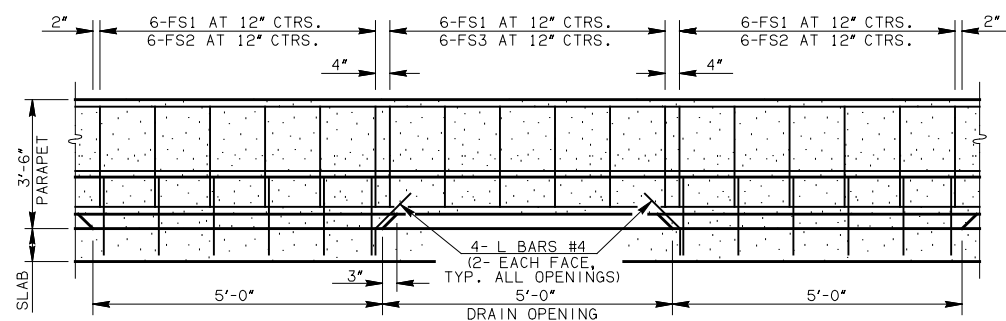
TOP VIEW



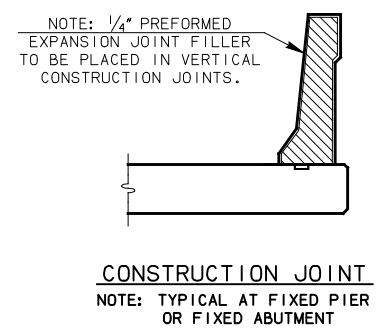
ELEVATION VIEW

DETAILS OF F-SHAPE END TRANSITION AT APPROACH SLAB

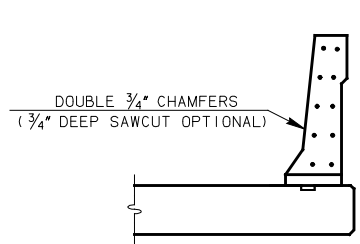
① NOTE: FOR GUARDRAIL HOLE DETAILS, SEE "ELEVATION OF GUARDRAIL CONNECTION HOLES"



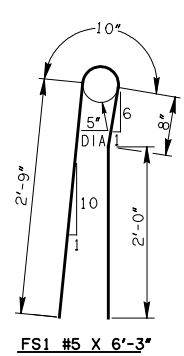
TYPICAL PARAPET REINFORCING SPACING (PARAPETS WITH DRAIN OPENINGS)



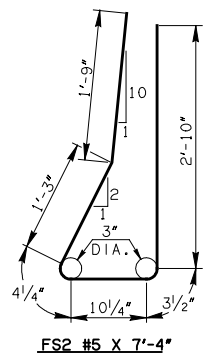
CONSTRUCTION JOINT
NOTE: TYPICAL AT FIXED PIER OR FIXED ABUTMENT



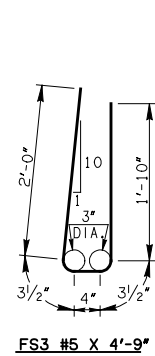
CONTROL CRACK JOINT
NOTE: ALL BARS SHALL BE CONTINUOUS THRU CONTROL CRACK JOINT



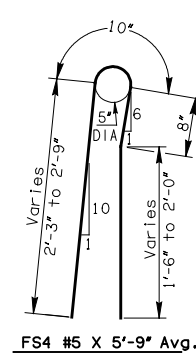
FS1 #5 X 6'-3"



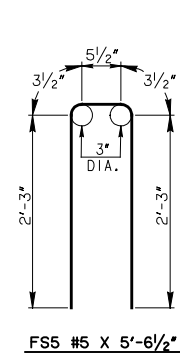
FS2 #5 X 7'-4"



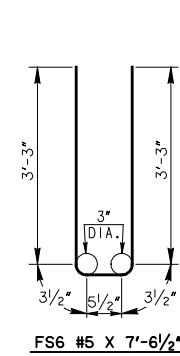
FS3 #5 X 4'-9"



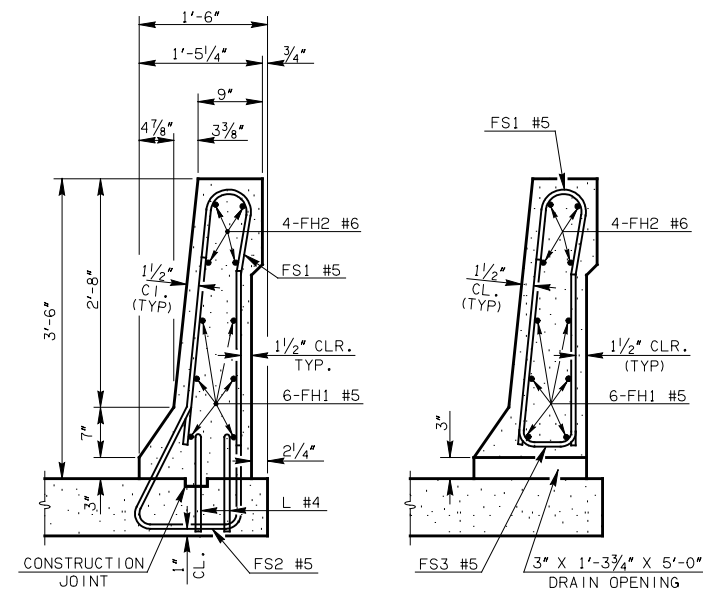
FS4 #5 X 5'-9" Avg. Varies from 5'-3" to 6'-3"



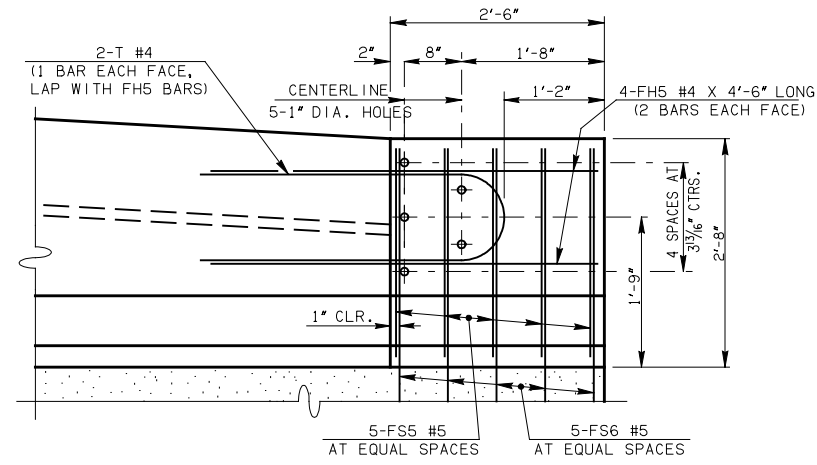
FS5 #5 X 5'-6 1/2"



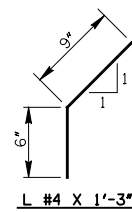
FS6 #5 X 7'-6 1/2"



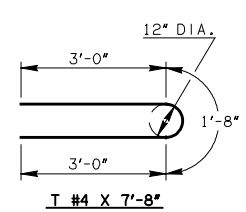
SECTION THRU POST AND SECTION A-A
SECTION THRU DRAIN OPENING
SECTION THRU BRIDGE PARAPET AT DECK SLAB



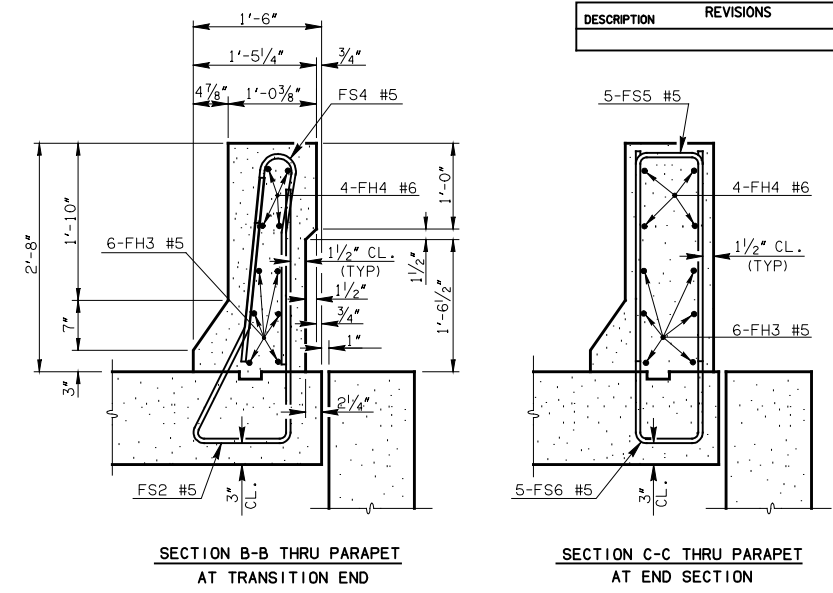
ELEVATION OF GUARDRAIL CONNECTION HOLES



L #4 X 1'-3"



T #4 X 7'-8"



SECTION B-B THRU PARAPET AT TRANSITION END
SECTION C-C THRU PARAPET AT END SECTION
SECTION THRU BRIDGE PARAPET AT APPROACH SLAB

SLOPED FACE CONCRETE PARAPET

CONSTRUCT THE SLOPED FACE CONCRETE PARAPET TO MEET THE REQUIREMENTS OF THE STANDARD SPECIFICATIONS FOR HIGHWAY CONSTRUCTION (ENGLISH), AS WELL AS THE FOLLOWING REQUIREMENTS.

CLASS AA CONCRETE:
CLASS AA CONCRETE SHALL BE USED IN THE F-SHAPED PARAPET. ALL COSTS OF CONCRETE TO BE INCLUDED IN THE PRICE BID PER LINEAR FOOT OF "42" F-SHAPED PARAPET".

REINFORCING STEEL:
ALL REINFORCING STEEL USED IN THE F-SHAPED PARAPET SHALL BE EPOXY COATED. PLACE AND TIE ALL FS2 AND FS6 BARS BEFORE CONCRETE IS PLACED IN THE DECK SLAB OR APPROACH SLAB, AS APPLICABLE. THE WEIGHT OF THE FS2, FS6 AND L BARS WILL BE MEASURED AND PAID FOR AS "EPOXY COATED REINFORCING STEEL". ALL OTHER REINFORCING STEEL IN THE PARAPET SHALL BE INCLUDED IN THE UNIT PRICE BID PER LINEAR FOOT OF "42" F-SHAPED PARAPET".

CONSTRUCTION JOINTS:
PLACE A CONSTRUCTION JOINT AT EACH FIXED ABUTMENT AND FIXED PIER, AND AT OTHER LOCATIONS AS SHOWN IN THE PLANS. PLACE 1/4" THICK PREFORMED EXPANSION MATERIAL IN THE CONSTRUCTION JOINT IN ACCORDANCE WITH THE DETAILS SHOWN. DO NOT PLACE FH-BARS THROUGH A CONSTRUCTION JOINT UNLESS DIRECTED TO DO SO IN THE PLANS.

EXPANSION JOINTS:
AT EXPANSION JOINTS IN THE DECK SLAB OR APPROACH SLAB, MATCH THE WIDTH OF THE OPENING BETWEEN THE ENDS OF THE PARAPET WITH THE OPENING OF THE EXPANSION JOINT.

CONTROL CRACK JOINTS:
PROVIDE DOUBLE 3/4" CHAMFERS OR 3/4" DEEP SAWCUT IN ACCORDANCE WITH THE DETAILS SHOWN. FOR PARAPETS WITH DRAIN OPENINGS, PLACE THE CONTROL CRACK JOINTS IN THE CENTER OF THE 5'-0" SOLID PARAPET BETWEEN THE DRAIN OPENINGS. FOR PARAPETS WITHOUT DRAIN OPENINGS, PLACE THE CONTROL CRACK JOINTS AT 10'-0" SPACINGS. PLACE CONTROL CRACK JOINTS AT OTHER LOCATIONS AS SHOWN IN THE PLANS OR AS DIRECTED BY THE ENGINEER.

DRAIN OPENINGS:
PLACE A SERIES OF 5'-0" DRAIN OPENINGS IN THE PARAPET AT LOCATIONS SHOWN IN THE PLANS OR AS DIRECTED BY THE ENGINEER. CONSTRUCT THE DRAIN OPENINGS SUCH THAT THEY ARE 5'-0" IN LENGTH AND ALTERNATING WITH 5'-0" SOLID PARAPET LENGTHS.

GUARDRAIL CONNECTIONS
FORM OR DRILL HOLES, AS SHOWN, FOR THE CONNECTION OF THE THRIE-BEAM GUARDRAIL TERMINAL CONNECTION (END SHOE) AT LOCATION SHOWN IN THE PLANS OR AS DIRECTED BY THE ENGINEER. IT IS THE RESPONSIBILITY OF THE BRIDGE CONTRACTOR TO PROVIDE THE HOLES. THE CONTRACTOR THAT INSTALLS THE GUARDRAIL WILL BE RESPONSIBLE FOR INSTALLING THE THRIE-BEAM GUARDRAIL TERMINAL CONNECTION.

BASIS OF PAYMENT		
ITEM NO.	DESCRIPTION	UNIT
504(F)	42" F-SHAPED PARAPET	L.F.

APPROVED BY BRIDGE ENGINEER *Kevin A. Buch* DATE 4/2/10

**OKLAHOMA DEPT. OF TRANSPORTATION
BRIDGE STANDARD (ENGLISH)**

42" F-SHAPED CONCRETE PARAPET