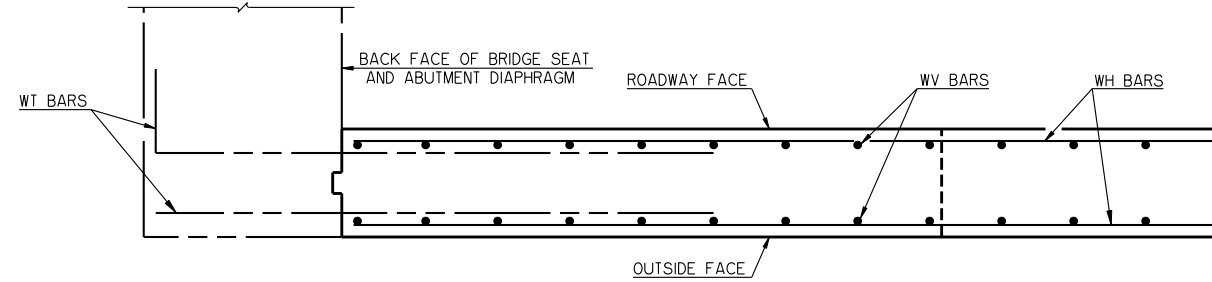
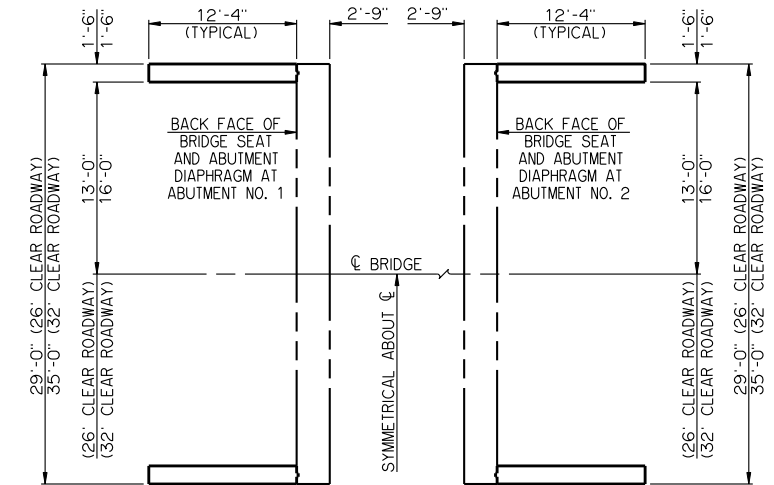


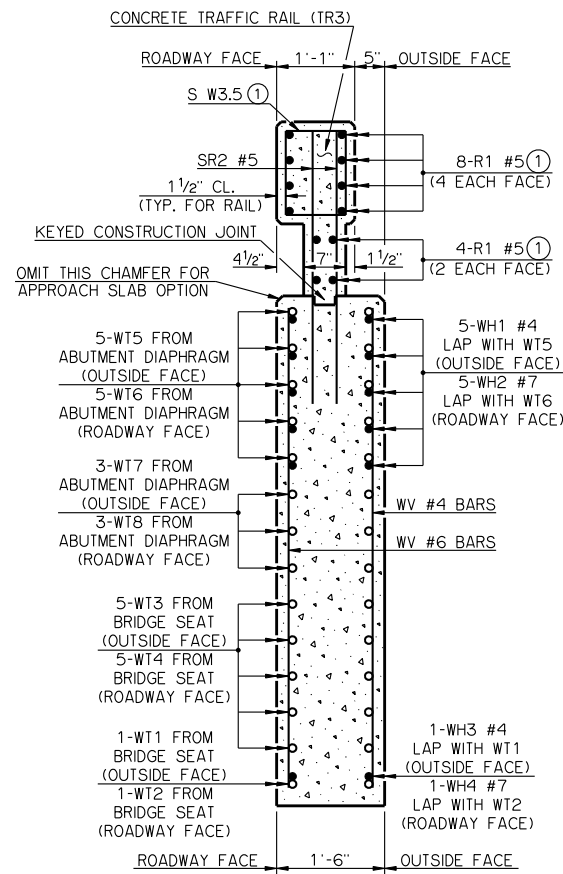
DETAILS OF BENT REINFORCING STEEL



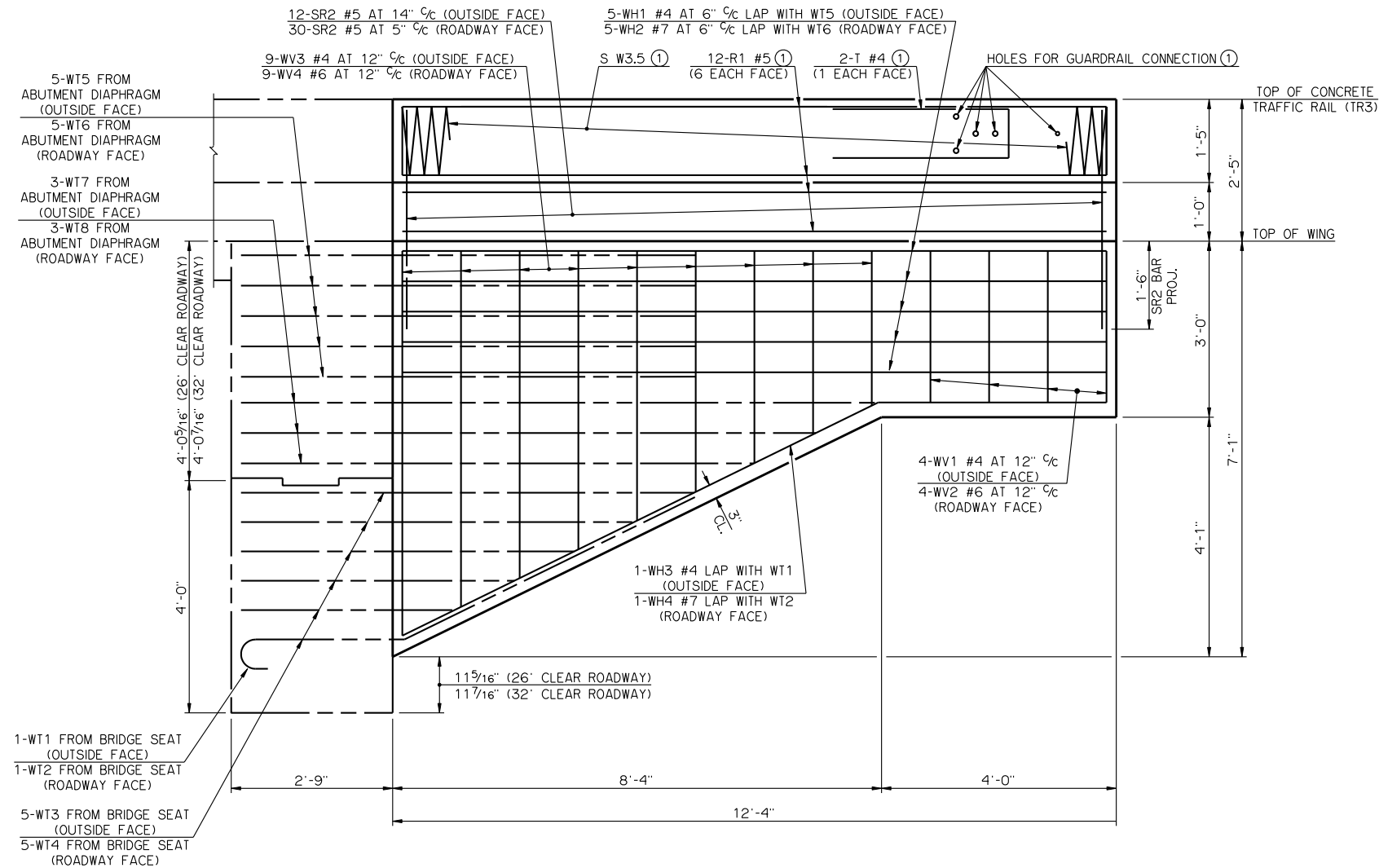
PLAN  
CONCRETE TRAFFIC RAIL (TR3) NOT SHOWN



LAYOUT OF WINGS



SECTION THRU WING AT BACK FACE OF BRIDGE SEAT



ELEVATION

BAR LIST - ONE WING					
MARK	NO.	SIZE	FORM	LENGTH	LENGTH VARIATION
SR2	42	#5	STR.	3'-9"	-
WH1	5	#4	STR.	12'-0"	-
WH2	5	#7	STR.	12'-0"	-
WH3	1	#4	BNT.	12'-11"	-
WH4	1	#7	BNT.	12'-11"	-
WV1	4	#4	STR.	2'-7"	-
WV2	4	#6	STR.	2'-7"	-
WV3	9	#4	STR.	4'-7" AVG.	2'-7" TO 6'-7"
WV4	9	#6	STR.	4'-7" AVG.	2'-7" TO 6'-7"

SUMMARY OF QUANTITIES - ONE WING		
ITEM	UNIT	TOTAL
SUBSTRUCTURE EXCAVATION, COMMON	CY	10.00
CONCRETE RAIL (TR3)	LF	12.40
CLASS A CONCRETE	CY	3.10
REINFORCING STEEL	LB	480.00

(2) QUANTITY INCLUDES ALL COST OF CONCRETE TRAFFIC RAIL (TR3) INCLUDING R1, S AND T REINFORCING STEEL BARS AND CONCRETE.

NOTES

CONSTRUCT THE TOP OF THE ABUTMENT WING LEVEL AS SHOWN. ABUTMENT WING CONCRETE SHALL NOT BE POURED UNTIL THE ABUTMENT DIAPHRAGMS OF THE SUPERSTRUCTURE AND THE DECK SLAB CONCRETE HAVE ATTAINED A STRENGTH OF 3,000 PSI. FOR ADDITIONAL DETAILS AND INFORMATION, SEE "ABUTMENT DETAILS" AND "ABUTMENT DIAPHRAGM DETAILS."

APPROVED BY BRIDGE ENGINEER *Robert J. Dusch* DATE 9-9-2011  
OKLAHOMA DEPARTMENT OF TRANSPORTATION  
COUNTY BRIDGE STANDARD (ENGLISH)  
WING DETAILS  
TYPE II AND TYPE B P.C. BEAMS  
26' AND 32' CLEAR ROADWAY - INTEGRAL - SKEWED 0°  
2009 SPECIFICATIONS CB26.32-I-SKO-WING-PC2 01E  
CB-941E

(1) SEE BRIDGE STANDARD TR3-2 FOR DETAILS NOT SHOWN