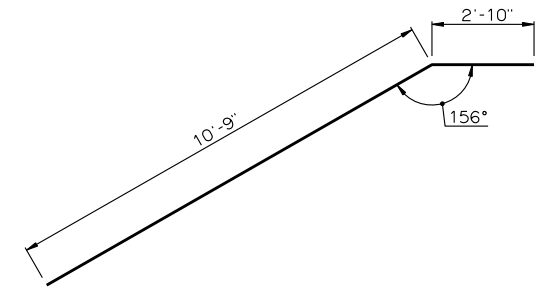
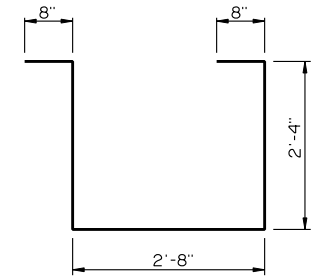


PLAN
CONCRETE TRAFFIC RAIL (TR3) NOT SHOWN
BRIDGE SEAT SHOWN WITHOUT SKEW

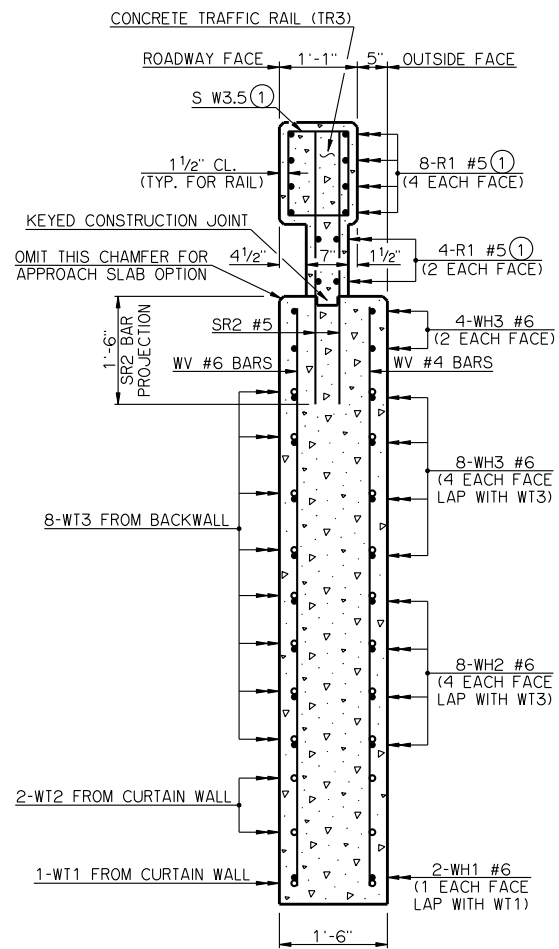


WH1 #6 X 13'-7"

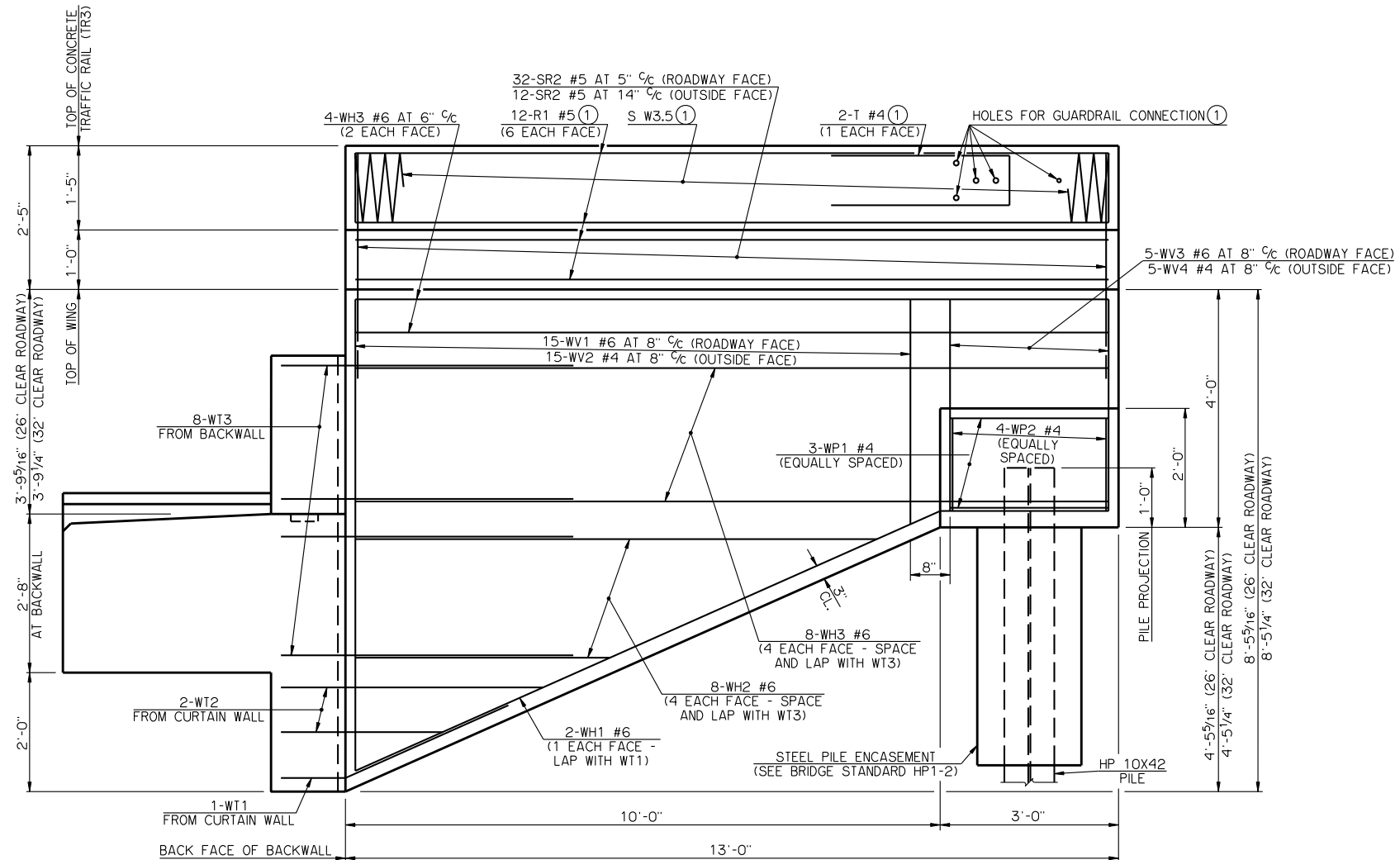


WP1 #4 X 8'-8"

DETAILS OF BENT REINFORCING STEEL



SECTION THRU WING AT BACK FACE OF BACKWALL



ELEVATION

BAR LIST - ONE WING					
MARK	NO.	SIZE	FORM	LENGTH	LENGTH VARIATION
SR2	44	#5	STR.	3'-9"	-
WH1	2	#6	BNT.	13'-7"	-
WH2	8	#6	STR.	6'-7" AVG.	4'-4" TO 8'-10"
WH3	12	#6	STR.	12'-8"	-
WV1	15	#6	STR.	5'-10" AVG.	3'-9" TO 7'-11"
WV2	15	#4	STR.	5'-10" AVG.	3'-9" TO 7'-11"
WV3	5	#6	STR.	3'-7"	-
WV4	5	#4	STR.	3'-7"	-
WP1	3	#4	BNT.	8'-8"	-
WP2	4	#4	STR.	1'-7"	-

(2) NO. INCLUDES TWO SETS OF 4 BARS

SUMMARY OF QUANTITIES - ONE WING			
ITEM	UNIT	TOTAL	
SUBSTRUCTURE EXCAVATION, COMMON	CY	15.00	
CONCRETE RAIL (TR3)	LF	13.00	
CLASS A CONCRETE	CY	4.40	
REINFORCING STEEL	LB	780.00	
PILES, FURNISHED (HP 10X42)	LF	-	
PILES, DRIVEN (HP 10X42)	LF	-	

(3) QUANTITY INCLUDES ALL COST OF CONCRETE TRAFFIC RAIL (TR3) INCLUDING R1, S AND T REINFORCING STEEL BARS AND CONCRETE.

APPROVED BY BRIDGE ENGINEER *Robert J. Dush* DATE 9-9-2011
 OKLAHOMA DEPARTMENT OF TRANSPORTATION
 COUNTY BRIDGE STANDARD (ENGLISH)
WING DETAILS
30' THRU 50' ROLLED BEAMS
26' AND 32' CLEAR ROADWAYS - CONVENTIONAL - SKEWED 30°
 2009 SPECIFICATIONS CB26.32-C-SK30-WING-RB-3050 01E
 CB-928E

(1) SEE BRIDGE STANDARD TR3-2 FOR DETAILS NOT SHOWN