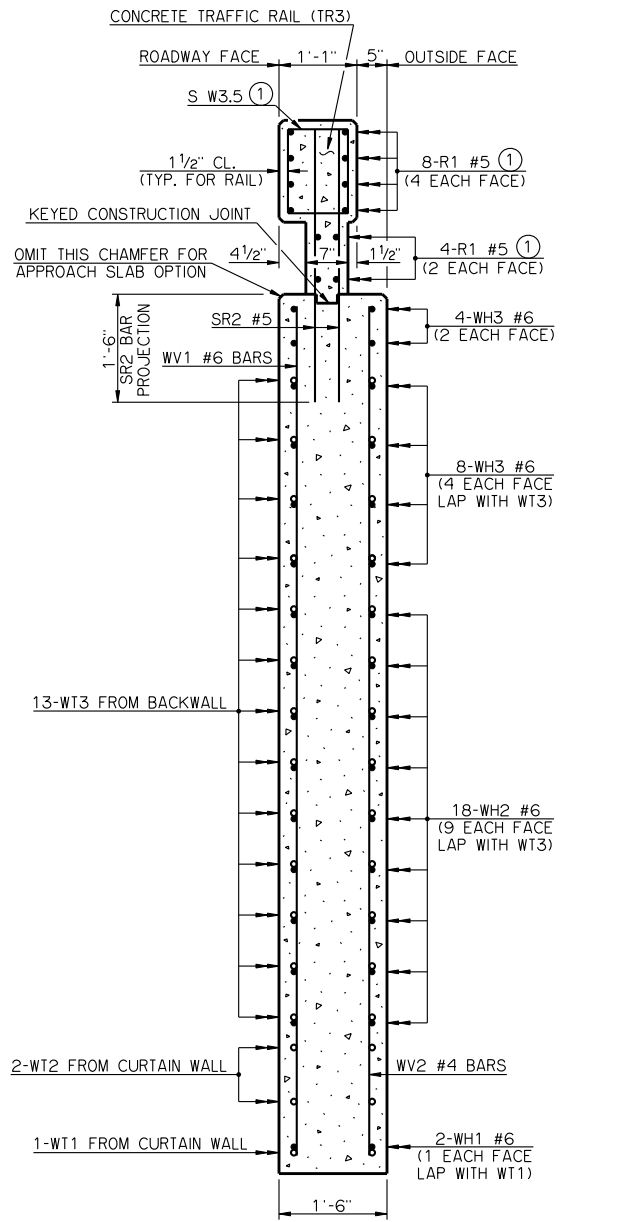
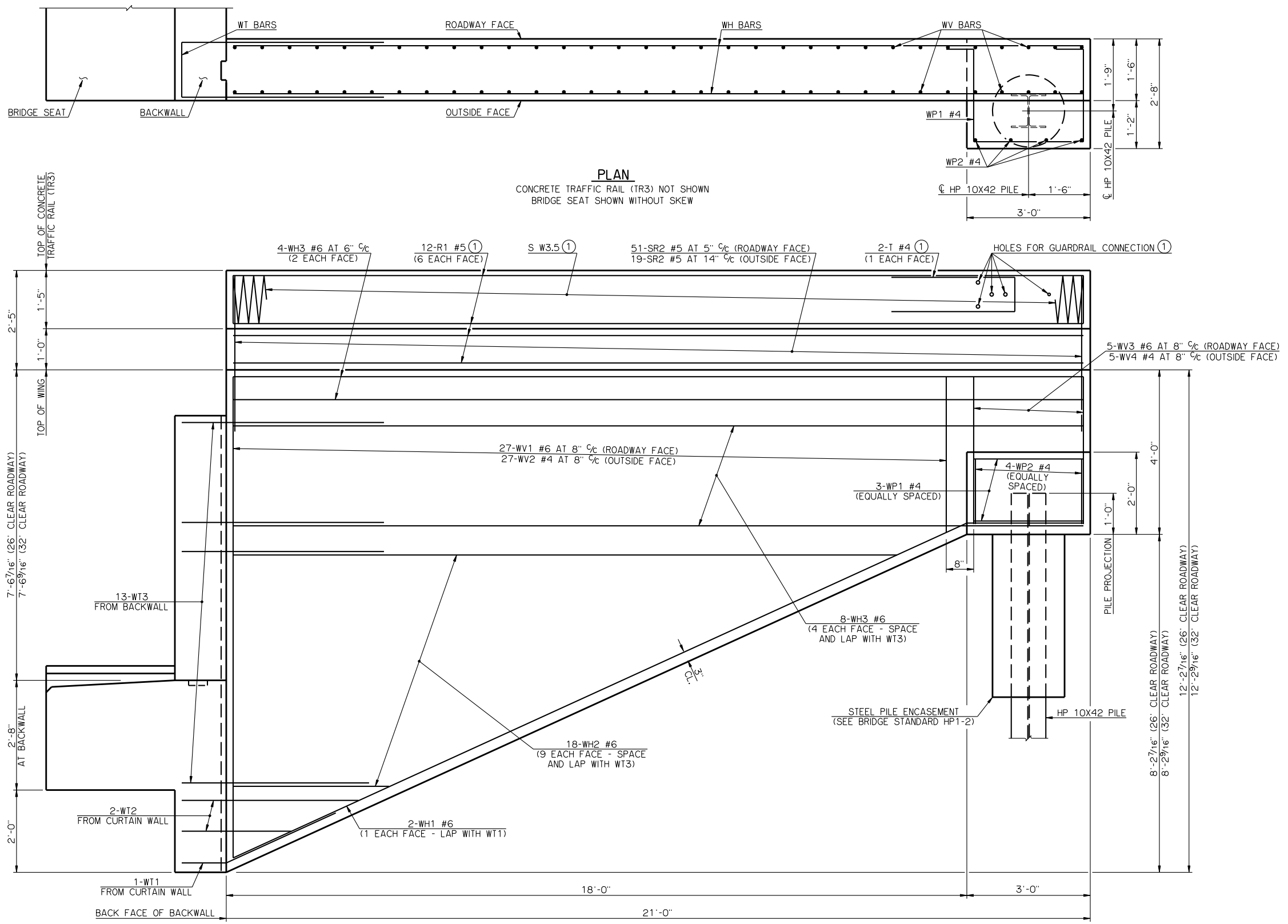


DETAILS OF BENT REINFORCING STEEL



SECTION THRU WING AT BACK FACE OF BACKWALL



BAR LIST - ONE WING

MARK	NO.	SIZE	FORM	LENGTH	LENGTH VARIATION
SR2	70	#5	STR.	3'-9"	-
WH1	2	#6	BNT.	22'-5"	-
WH2	18	#6	STR.	10'-3" AVG.	4'-2" TO 16'-4"
WH3	12	#6	STR.	20'-8"	-
WV1	27	#6	STR.	7'-9" AVG.	3'-9" TO 11'-9"
WV2	27	#4	STR.	7'-9" AVG.	3'-9" TO 11'-9"
WV3	5	#6	STR.	3'-7"	-
WV4	5	#4	STR.	3'-7"	-
WP1	3	#4	BNT.	8'-8"	-
WP2	4	#4	STR.	1'-7"	-

(2) NO. INCLUDES TWO SETS OF 9 BARS

ELEVATION

SUMMARY OF QUANTITIES - ONE WING

ITEM	UNIT	TOTAL
SUBSTRUCTURE EXCAVATION, COMMON	CY	20.00
CONCRETE RAIL (TR3)	LF	21.00
CLASS A CONCRETE	CY	9.10
REINFORCING STEEL	LB	1,510.00
PILES, FURNISHED (HP 10X42)	LF	-
PILES, DRIVEN (HP 10X42)	LF	-

(3) QUANTITY INCLUDES ALL COST OF CONCRETE TRAFFIC RAIL (TR3) INCLUDING R1, S AND T REINFORCING STEEL BARS AND CONCRETE.

(1) SEE BRIDGE STANDARD TR3-2 FOR DETAILS NOT SHOWN

APPROVED BY BRIDGE ENGINEER *Robert J. Dusch* DATE 9-9-2011

OKLAHOMA DEPARTMENT OF TRANSPORTATION
COUNTY BRIDGE STANDARD (ENGLISH)

WING DETAILS
TYPE BT-72 AND TYPE J P.C. BEAMS
26' AND 32' CLEAR ROADWAYS - CONVENTIONAL - SKEWED 30°

2009 SPECIFICATIONS CB26.32-C-SK30-WING-PC5 01E
CB-927E