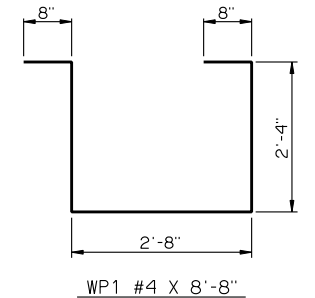
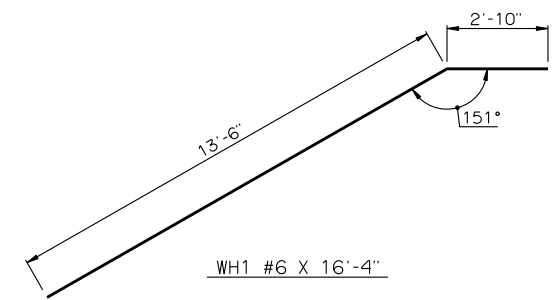
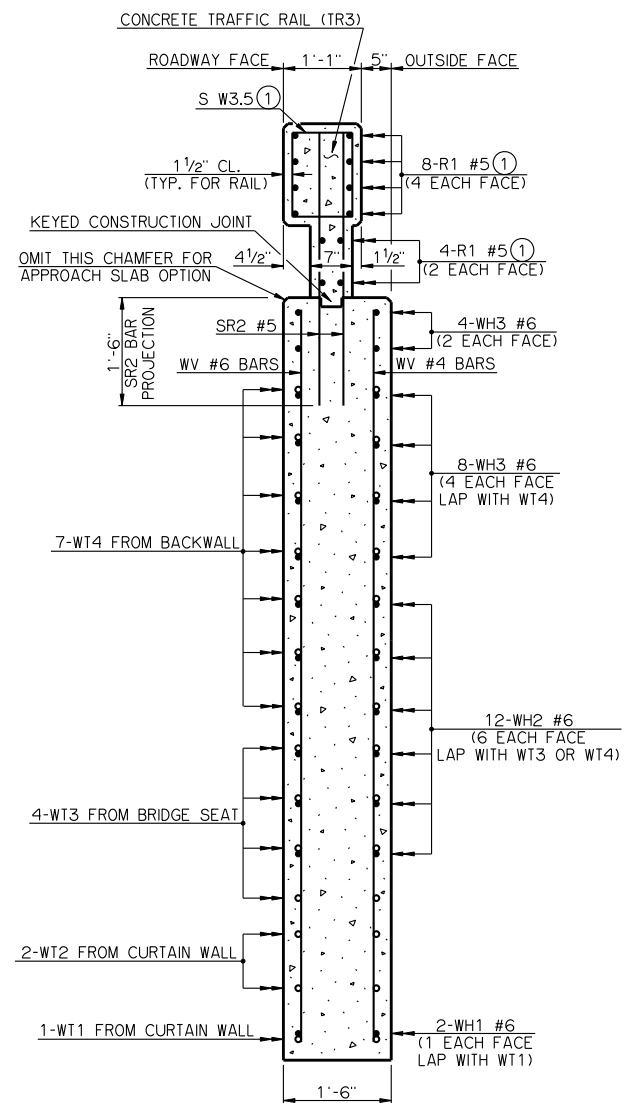


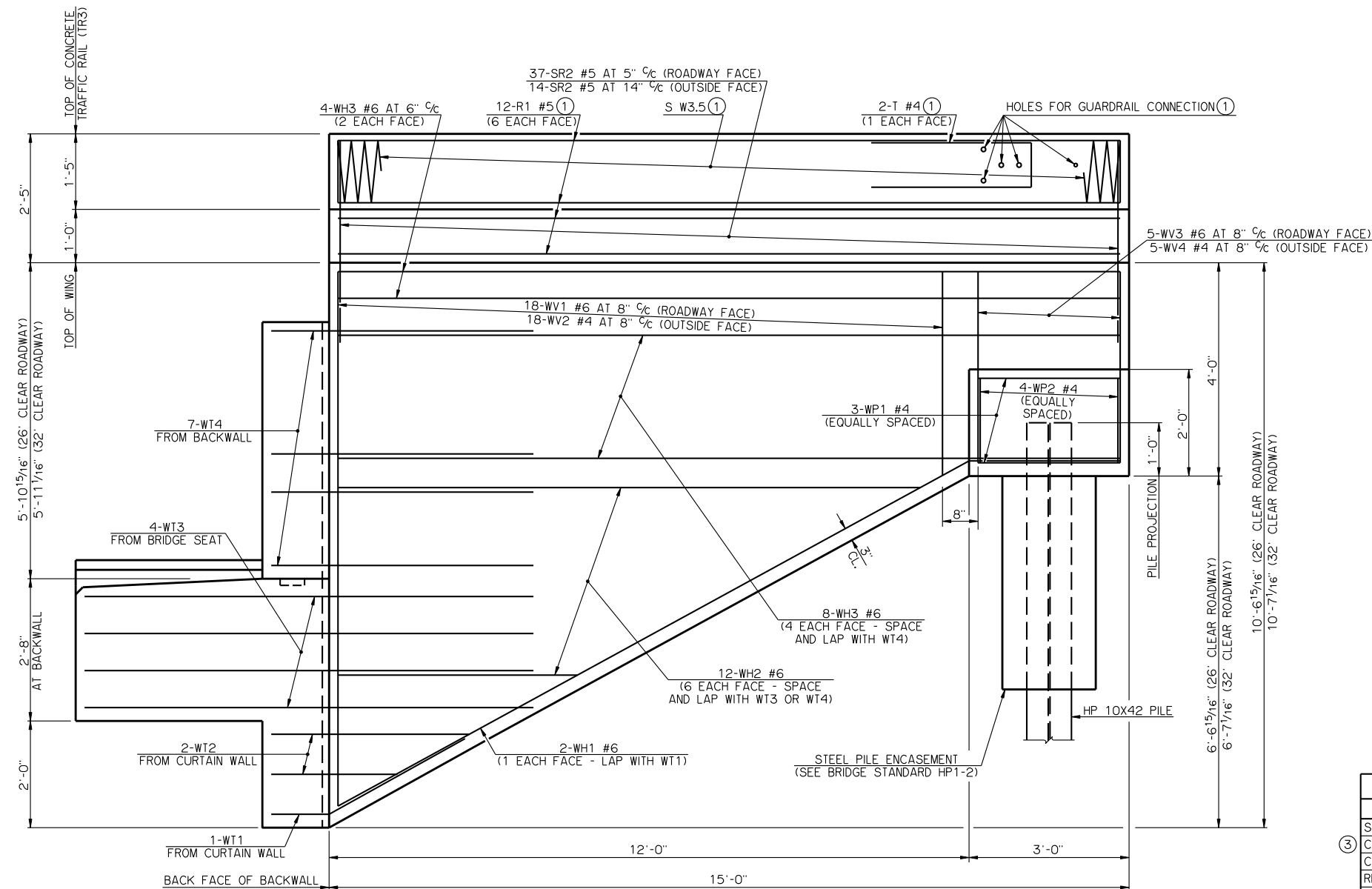
PLAN
CONCRETE TRAFFIC RAIL (TR3) NOT SHOWN



DETAILS OF BENT REINFORCING STEEL



SECTION THRU WING AT BACK FACE OF BACKWALL



ELEVATION

BAR LIST - ONE WING					
MARK	NO.	SIZE	FORM	LENGTH	LENGTH VARIATION
SR2	51	#5	STR.	3'-9"	-
WH1	2	#6	BNT.	16'-4"	-
WH2	12	#6	STR.	7'-9 1/2" AVG.	4'-8" TO 10'-11"
WH3	12	#6	STR.	14'-8"	-
WV1	18	#6	STR.	6'-11" AVG.	3'-10" TO 10'-0"
WV2	18	#4	STR.	6'-11" AVG.	3'-10" TO 10'-0"
WV3	5	#6	STR.	3'-7"	-
WV4	5	#4	STR.	3'-7"	-
WP1	3	#4	BNT.	8'-8"	-
WP2	4	#4	STR.	1'-7"	-

(2) NO. INCLUDES TWO SETS OF 6 BARS

SUMMARY OF QUANTITIES - ONE WING			
ITEM	UNIT	TOTAL	
SUBSTRUCTURE EXCAVATION, COMMON	CY	15.00	
CONCRETE RAIL (TR3)	LF	15.00	
CLASS A CONCRETE	CY	5.80	
REINFORCING STEEL	LB	990.00	
PILES, FURNISHED (HP 10X42)	LF	-	
PILES, DRIVEN (HP 10X42)	LF	-	

(3) QUANTITY INCLUDES ALL COST OF CONCRETE TRAFFIC RAIL (TR3) INCLUDING R1, S AND T REINFORCING STEEL BARS AND CONCRETE.

APPROVED BY BRIDGE ENGINEER *Robert J. Dush* DATE 9-9-2011
 OKLAHOMA DEPARTMENT OF TRANSPORTATION
 COUNTY BRIDGE STANDARD (ENGLISH)
WING DETAILS
TYPE IV P.C. BEAMS
26' AND 32' CLEAR ROADWAYS - CONVENTIONAL - SKEWED 0°
 2009 SPECIFICATIONS CB26.32-C-SKO-WING-PC4 Q1E
 CB-909E

(1) SEE BRIDGE STANDARD TR3-2 FOR DETAILS NOT SHOWN