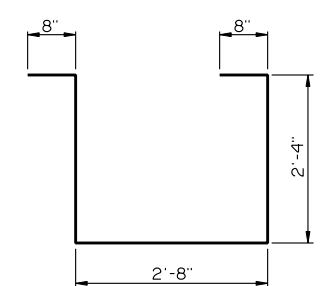
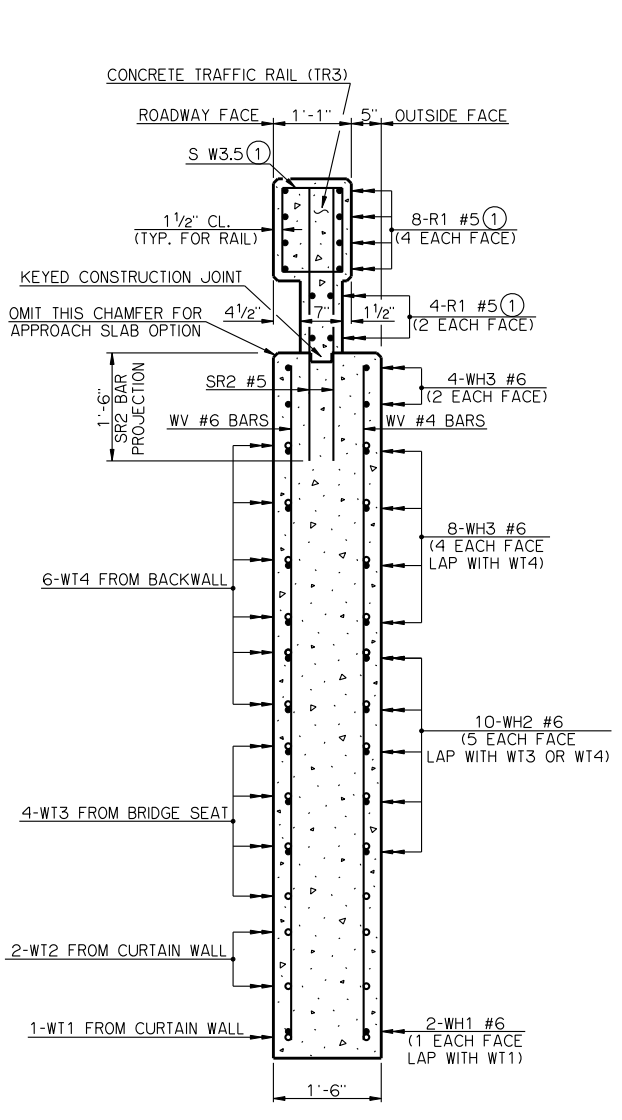


WH1 #6 X 14'-10"

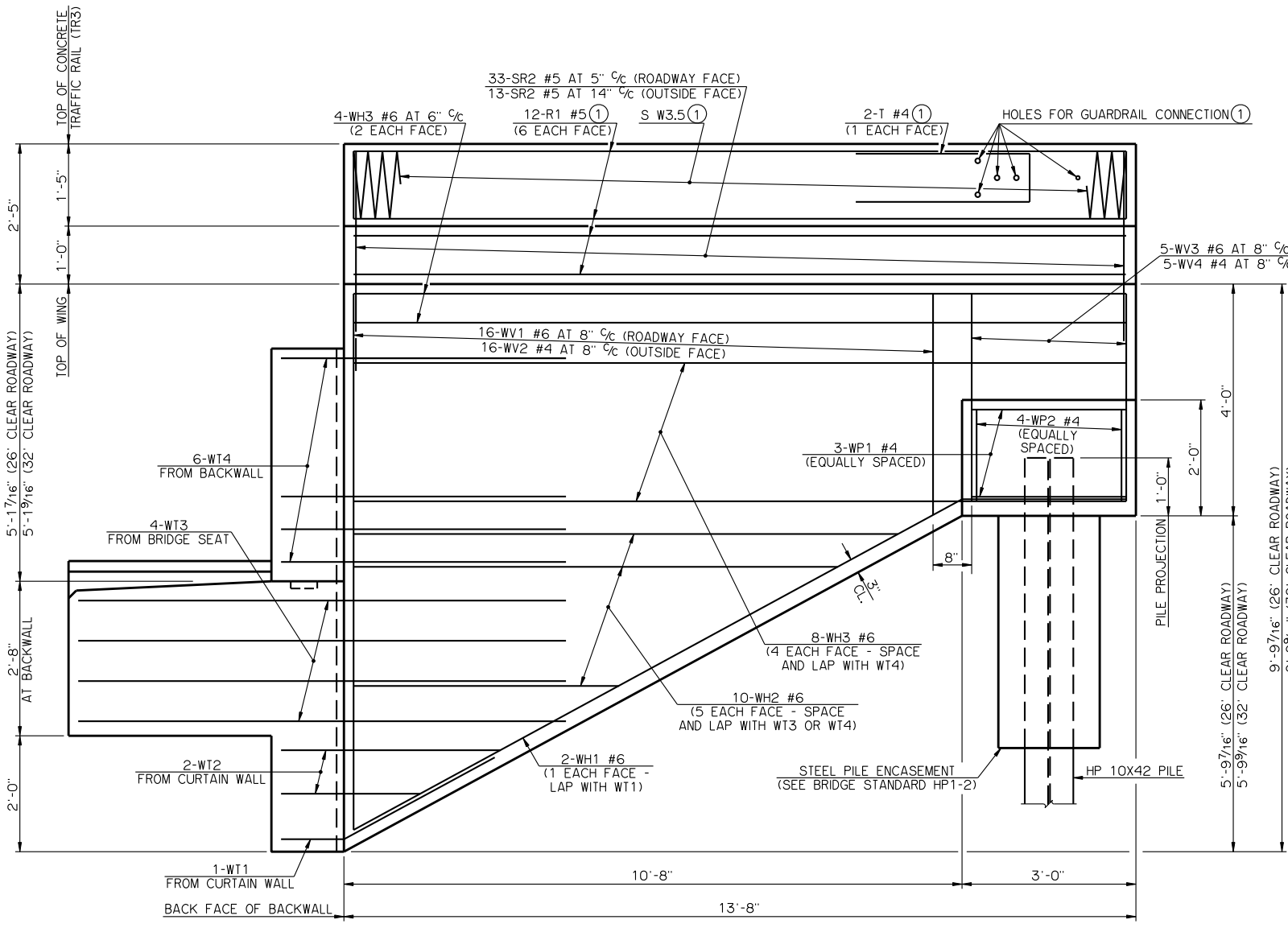


WP1 #4 X 8'-8"

**DETAILS OF BENT REINFORCING STEEL**



**SECTION THRU WING AT BACK FACE OF BACKWALL**



**ELEVATION**

BAR LIST - ONE WING					
MARK	NO.	SIZE	FORM	LENGTH	LENGTH VARIATION
SR2	46	#5	STR.	3'-9"	-
WH1	2	#6	BNT.	14'-10"	-
WH2	10	#6	STR.	7'-2 1/2" AVG.	4'-9" TO 9'-8"
WH3	12	#6	STR.	13'-4"	-
WV1	16	#6	STR.	6'-6 1/2" AVG.	3'-10" TO 9'-3"
WV2	16	#4	STR.	6'-6 1/2" AVG.	3'-10" TO 9'-3"
WV3	5	#6	STR.	3'-7"	-
WV4	5	#4	STR.	3'-7"	-
WP1	3	#4	BNT.	8'-8"	-
WP2	4	#4	STR.	1'-7"	-

(2) NO. INCLUDES TWO SETS OF 5 BARS

SUMMARY OF QUANTITIES - ONE WING		
ITEM	UNIT	TOTAL
SUBSTRUCTURE EXCAVATION, COMMON	CY	15.00
(3) CONCRETE RAIL (TR3)	LF	13.70
CLASS A CONCRETE	CY	5.10
REINFORCING STEEL	LB	870.00
PILES, FURNISHED (HP 10 x 42)	LF	-
PILES, DRIVEN (HP 10 x 42)	LF	-

(3) QUANTITY INCLUDES ALL COST OF CONCRETE TRAFFIC RAIL (TR3) INCLUDING R1, S AND T REINFORCING STEEL BARS AND CONCRETE.

APPROVED BY BRIDGE ENGINEER *Kent Dush* DATE 9-9-2011

OKLAHOMA DEPARTMENT OF TRANSPORTATION  
COUNTY BRIDGE STANDARD (ENGLISH)

**WING DETAILS**  
**TYPE III AND TYPE C P.C. BEAMS**

**26' AND 32' CLEAR ROADWAYS - CONVENTIONAL - SKEWED 0°**

(1) SEE BRIDGE STANDARD TR3-2 FOR DETAILS NOT SHOWN