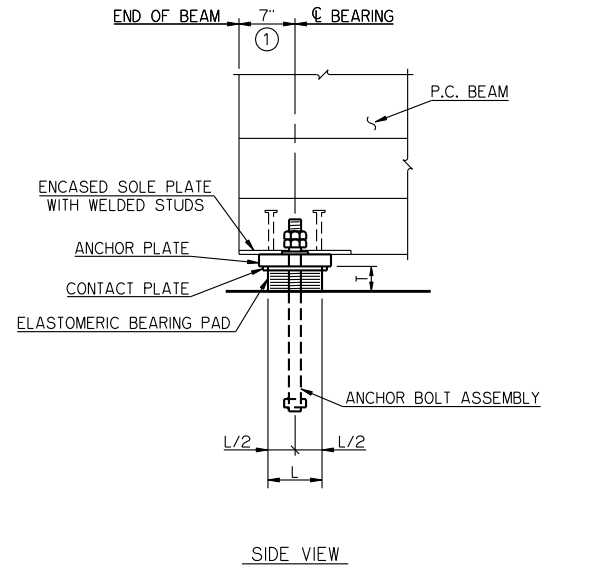
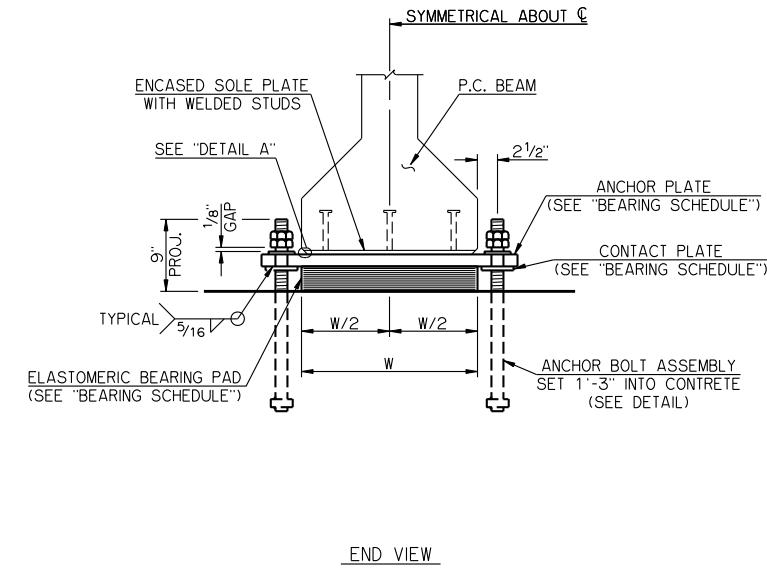
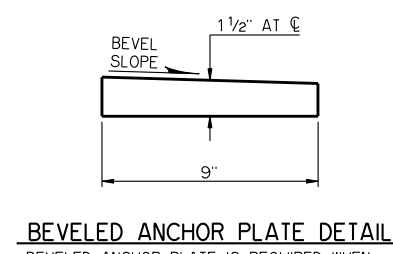
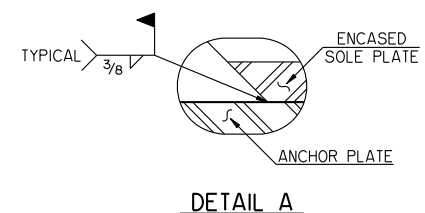


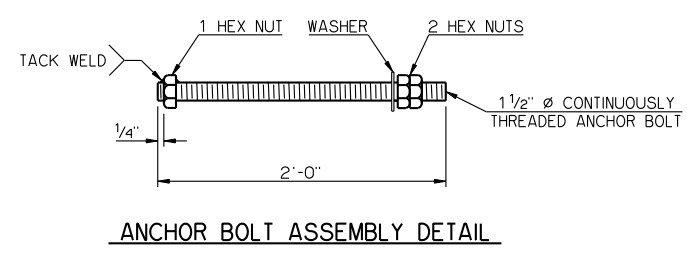
BEARING DETAILS
60' THRU 75' SPANS



BEARING DETAILS
80' THRU 90' SPANS



BEVELED ANCHOR PLATE IS REQUIRED WHEN ANGLE BETWEEN UNDERSIDE OF BEAM AND HORIZONTAL EXCEEDS 1.0%. BEVEL SLOPE TO MATCH ANGLE BETWEEN BEAM AND HORIZONTAL. PAINT THICKER EDGE RED.



SPAN	ANCHOR PLATE	CONTACT PLATE	60 DUROMETER ELASTOMERIC BEARING PAD			MAXIMUM EXPANSION LENGTH WITHOUT BONDING	
			SIZE (T X L X W)	COVER LAYER	INNER LAYER		LAMINATE PLATE
60'	1 1/2" X 9" X 2'-8"	---	3 1/8" X 6 1/4" X 1'-10"	2-1/4"	5-3/8"	6-1/8"	220'
65'	1 1/2" X 9" X 2'-8"	---	3 1/8" X 6 1/4" X 1'-10"	2-1/4"	5-3/8"	6-1/8"	240'
70'	1 1/2" X 9" X 2'-8"	---	3 1/8" X 6 1/4" X 1'-10"	2-1/4"	5-3/8"	6-1/8"	260'
75'	1 1/2" X 9" X 2'-8"	---	3 1/8" X 6 1/2" X 1'-10"	2-1/4"	5-3/8"	6-1/8"	260'
80'	1 1/2" X 9" X 2'-8"	1/2" X 4" X 8"	3 1/8" X 6 1/2" X 1'-10"	2-1/4"	5-3/8"	6-1/8"	260'
85'	1 1/2" X 9" X 2'-8"	1/2" X 4" X 8"	3 1/8" X 6 1/2" X 1'-10"	2-1/4"	5-3/8"	6-1/8"	260'
90'	1 1/2" X 9" X 2'-8"	1/2" X 4" X 8"	3 1/8" X 6 3/4" X 1'-10"	2-1/4"	5-3/8"	6-1/8"	260'

NOTES
STRUCTURAL STEEL FOR ANCHOR PLATES, CONTACT PLATES AND CONTINUOUSLY THREADED ANCHOR BOLTS SHALL CONFORM TO AASHTO M 270 (ASTM A 709), GRADE 50W, WEATHERING STEEL (CHARPY V-NOTCH TESTING NOT REQUIRED). HEX NUTS SHALL CONFORM TO AASHTO M 291 (ASTM A 563). WASHERS SHALL CONFORM TO AASHTO M 293 (ASTM F 436), TYPE 3. ANCHOR BOLT ASSEMBLIES SHALL BE GALVANIZED, AND ALL OTHER STEEL PARTS COMPRISING THE BEARING ASSEMBLIES SHALL BE PAINTED WITH THE IZ-E-U PAINT SYSTEM.

ANCHOR BOLTS SHALL BE CENTERED IN SLOTS DURING SETTING OF BEAMS. DIMENSION MAY VARY AT EXPANSION BEARING DEPENDING ON TEMPERATURE AT THE TIME OF BEAM SETTING.

APPROVED BY BRIDGE ENGINEER *Robert Duch* DATE 9-9-2011
OKLAHOMA DEPARTMENT OF TRANSPORTATION
COUNTY BRIDGE STANDARD (ENGLISH)
BEARING DETAILS
TYPE III AND TYPE C P.C. BEAMS
32' CLEAR ROADWAY - CONVENTIONAL - SKEWED 0° AND 30°
2009 SPECIFICATIONS CB32-C-SKO.30-BRG-PC3 01E
CB-740E