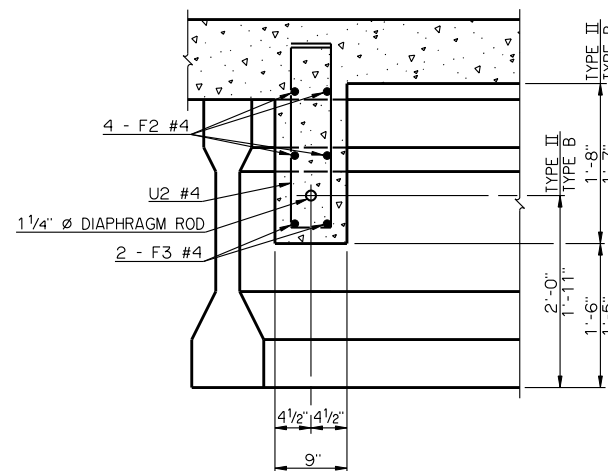
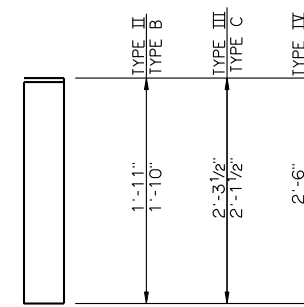


PLAN OF END DIAPHRAGM  
TYPE II AND TYPE B P.C. BEAMS  
LEFT FORWARD SKEW SHOWN, RIGHT FORWARD SKEW OPPOSITE HAND

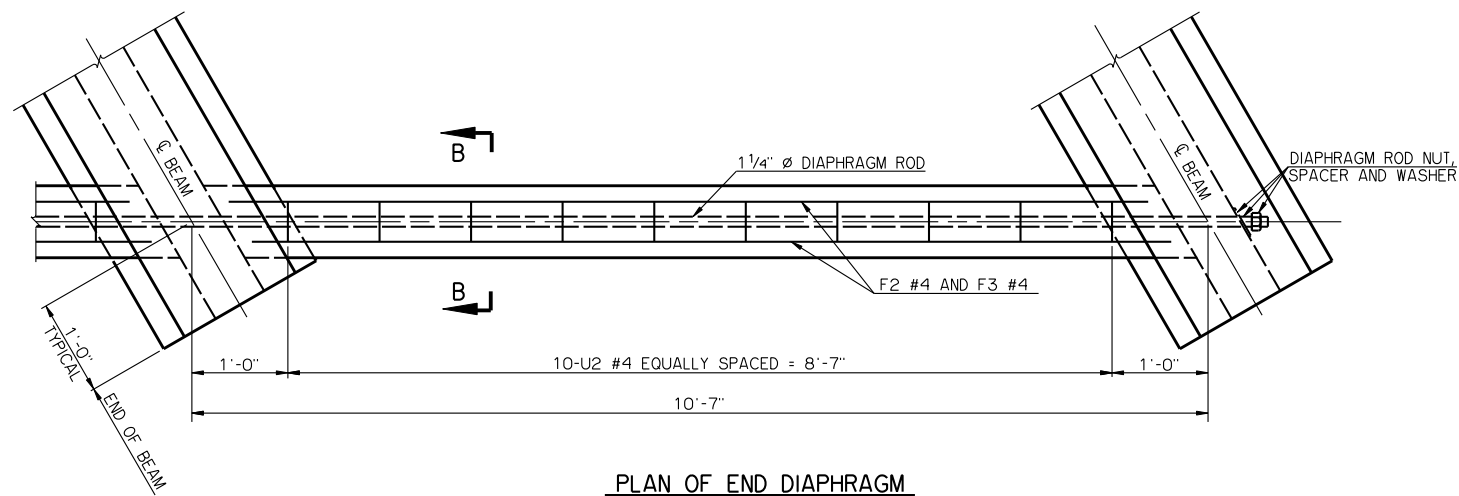


SECTION A-A

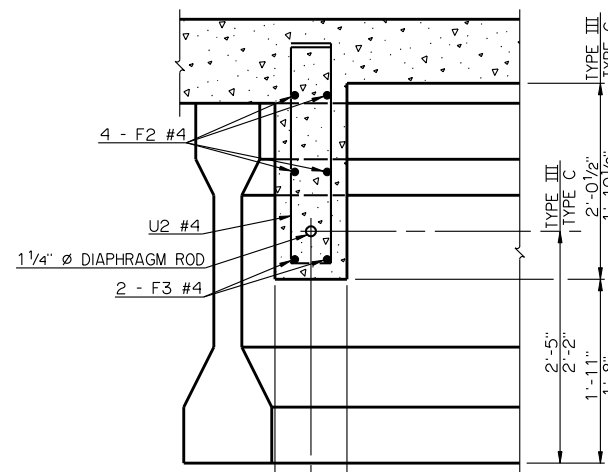


U2 #4 X 5'-1" - TYPE II  
U2 #4 X 4'-11" - TYPE B  
U2 #4 X 5'-10" - TYPE III  
U2 #4 X 5'-6" - TYPE C  
U2 #4 X 6'-3" - TYPE IV

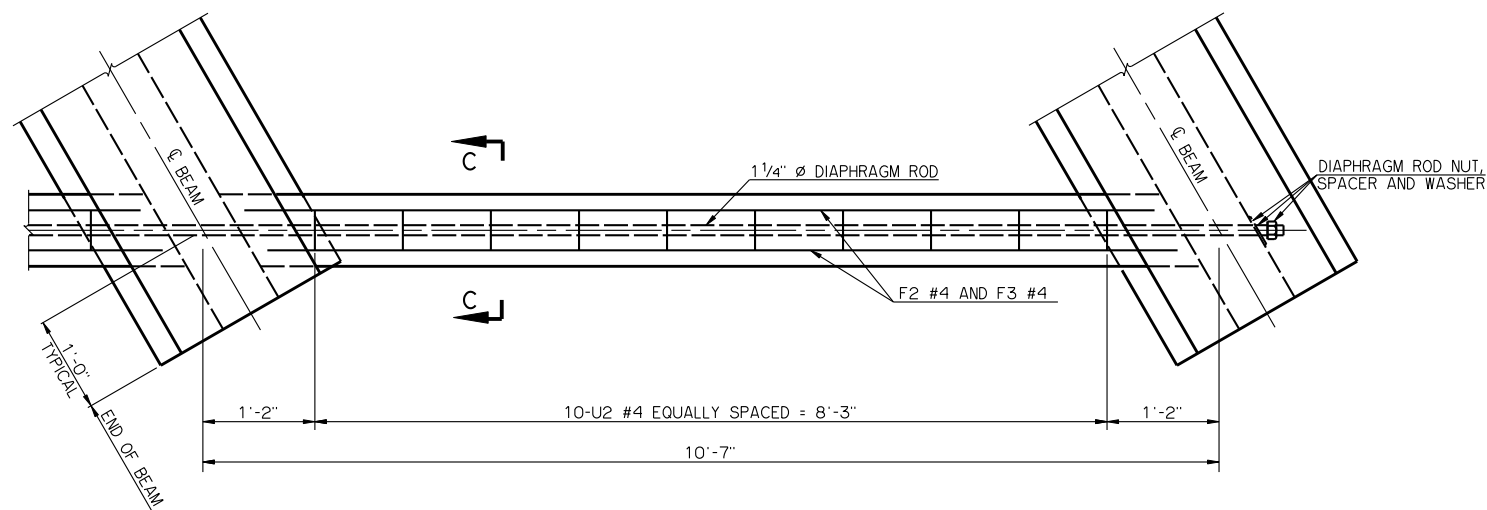
DETAILS OF BENT REINFORCING STEEL



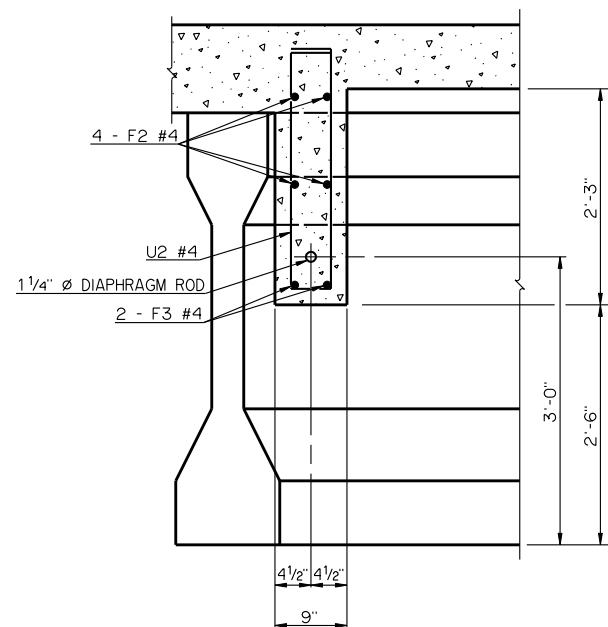
PLAN OF END DIAPHRAGM  
TYPE III AND TYPE C P.C. BEAMS  
LEFT FORWARD SKEW SHOWN, RIGHT FORWARD SKEW OPPOSITE HAND



SECTION B-B



PLAN OF END DIAPHRAGM  
TYPE IV P.C. BEAM  
LEFT FORWARD SKEW SHOWN, RIGHT FORWARD SKEW OPPOSITE HAND



SECTION C-C

BAR LIST - ONE END DIAPHRAGM					
P.C. BEAM	MARK	NO.	SIZE	FORM	LENGTH
TYPE II	U2	10	#4	BNT.	5'-1"
	F2	4	#4	STR.	9'-1"
	F3	2	#4	STR.	9'-8"
TYPE B	U2	10	#4	BNT.	4'-11"
	F2	4	#4	STR.	9'-1"
	F3	2	#4	STR.	9'-8"
TYPE III	U2	10	#4	BNT.	5'-10"
	F2	4	#4	STR.	8'-9"
	F3	2	#4	STR.	9'-7"
TYPE C	U2	10	#4	BNT.	5'-6"
	F2	4	#4	STR.	8'-11"
	F3	2	#4	STR.	9'-7"
TYPE IV	U2	10	#4	BNT.	6'-3"
	F2	4	#4	STR.	8'-4"
	F3	2	#4	STR.	9'-6"

APPROVED BY BRIDGE ENGINEER *Robert J. Duch* DATE 9-9-2011

OKLAHOMA DEPARTMENT OF TRANSPORTATION  
COUNTY BRIDGE STANDARD (ENGLISH)

END DIAPHRAGM DETAILS  
TYPE II, B, III, C AND IV P.C. BEAMS

32' CLEAR ROADWAY - CONVENTIONAL - SKEWED 30°

2009 SPECIFICATIONS CB32-C-SK30-DIA-END-PC234 01E

CB-617E