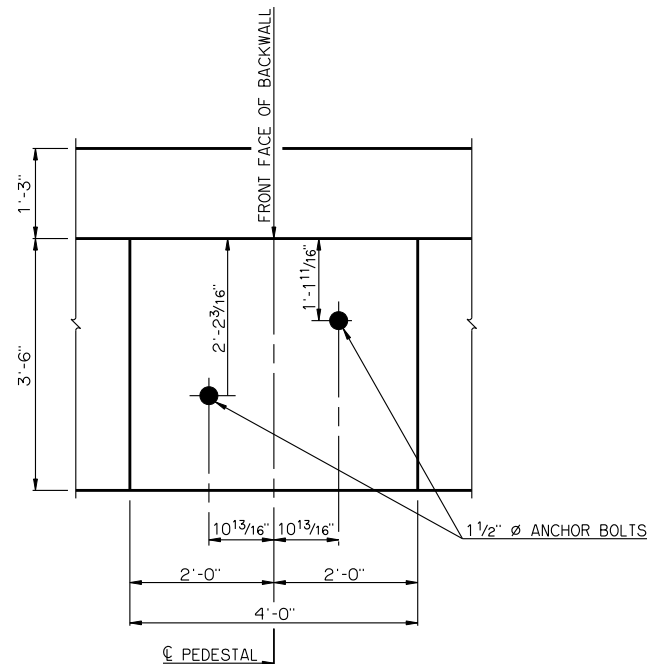
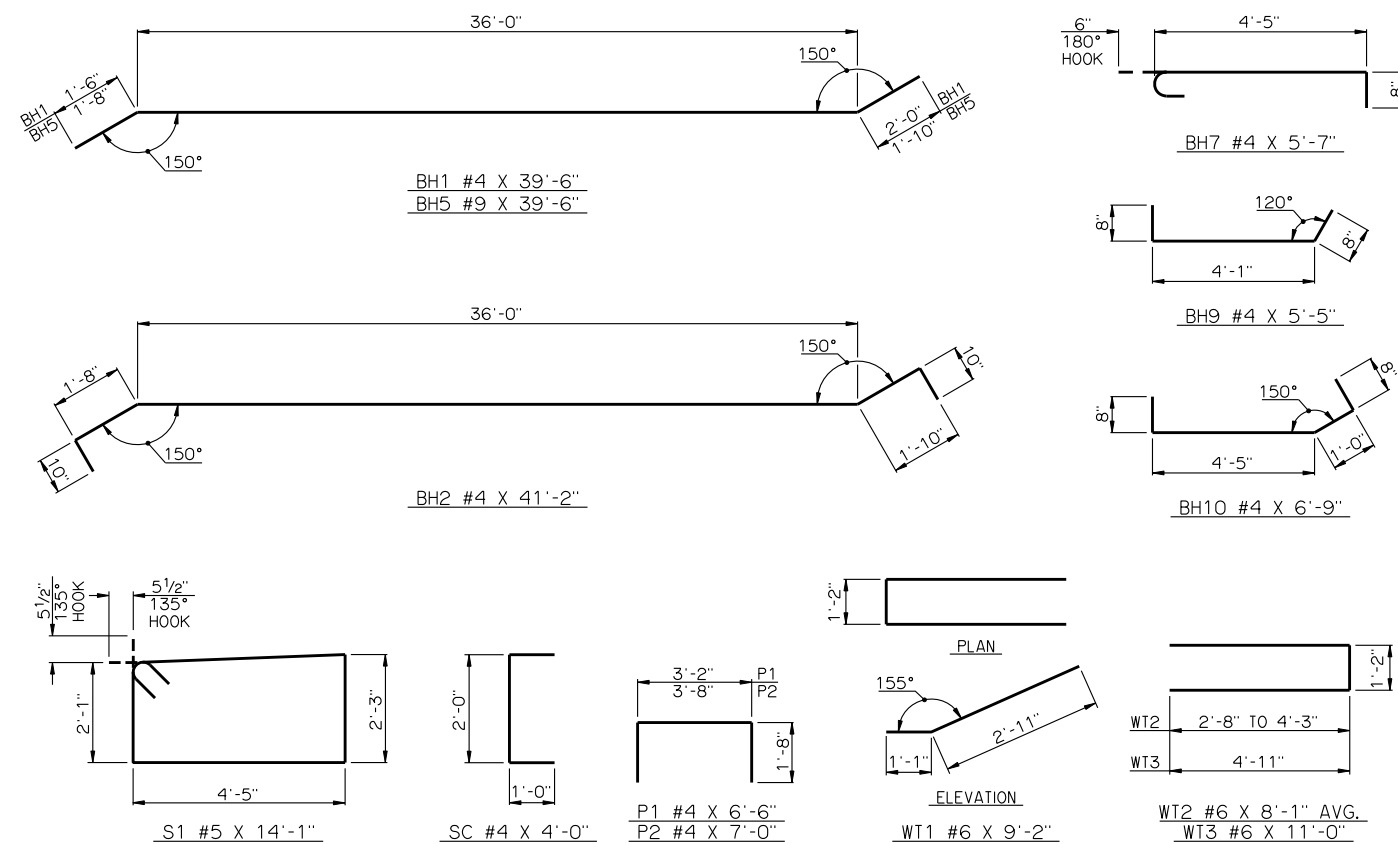


TYPICAL SECTION THRU ABUTMENT



DETAIL OF PEDESTAL WITH LAYOUT OF ANCHOR BOLTS



DETAILS OF BENT REINFORCING STEEL

| BAR LIST - ONE ABUTMENT | | | | | |
|-------------------------|-----|------|------|-------------|------------------|
| MARK | NO. | SIZE | FORM | LENGTH | LENGTH VARIATION |
| BH1 | 7 | #4 | BNT. | 39'-6" | - |
| BH2 | 8 | #4 | BNT. | 41'-2" | - |
| BH3 | 5 | #9 | STR. | 38'-5" AVG. | 37'-6" TO 39'-4" |
| BH4 | 4 | #9 | STR. | 38'-5" AVG. | 37'-6" TO 39'-4" |
| BH5 | 2 | #9 | BNT. | 39'-6" | - |
| BH6 | 1 | #4 | STR. | 37'-6" | - |
| BH7 | 21 | #4 | BNT. | 5'-7" | - |
| BH8 | 2 | #9 | STR. | 12'-9" | - |
| BH9 | 3 | #4 | BNT. | 5'-5" | - |
| BH10 | 3 | #4 | BNT. | 6'-9" | - |
| ① BV1 | 38 | #4 | STR. | 7'-10" AVG. | 7'-8" TO 8'-0" |
| ① BV2 | 38 | #5 | STR. | 7'-10" AVG. | 7'-8" TO 8'-0" |
| BV3 | 8 | #6 | STR. | 7'-8" | - |
| P1 | 20 | #4 | BNT. | 6'-6" | - |
| P2 | 16 | #4 | BNT. | 7'-0" | - |
| S1 | 42 | #5 | BNT. | 14'-1" | - |
| SC | 6 | #4 | BNT. | 4'-0" | - |
| WT1 | 2 | #6 | BNT. | 9'-2" | - |
| ② WT2 | 4 | #6 | BNT. | 8'-1" AVG. | 6'-6" TO 9'-8" |
| WT3 | 18 | #6 | BNT. | 11'-0" | - |

① NO. INCLUDES TWO SETS OF 19 BARS
 ② NO. INCLUDES TWO SETS OF 2 BARS

APPROVED BY BRIDGE ENGINEER *Robert J. Dush* DATE 10-31-2011
 OKLAHOMA DEPARTMENT OF TRANSPORTATION
 COUNTY BRIDGE STANDARD (ENGLISH)
ABUTMENT DETAILS
 80' THRU 100' ROLLED BEAMS
 (SHEET NO. 2 OF 2)
 32' CLEAR ROADWAY - CONVENTIONAL - SKEWED 30°
 2009 SPECIFICATIONS CB32-C-SK30-ABUT-RB-80100-2 O2E
 CB-583E