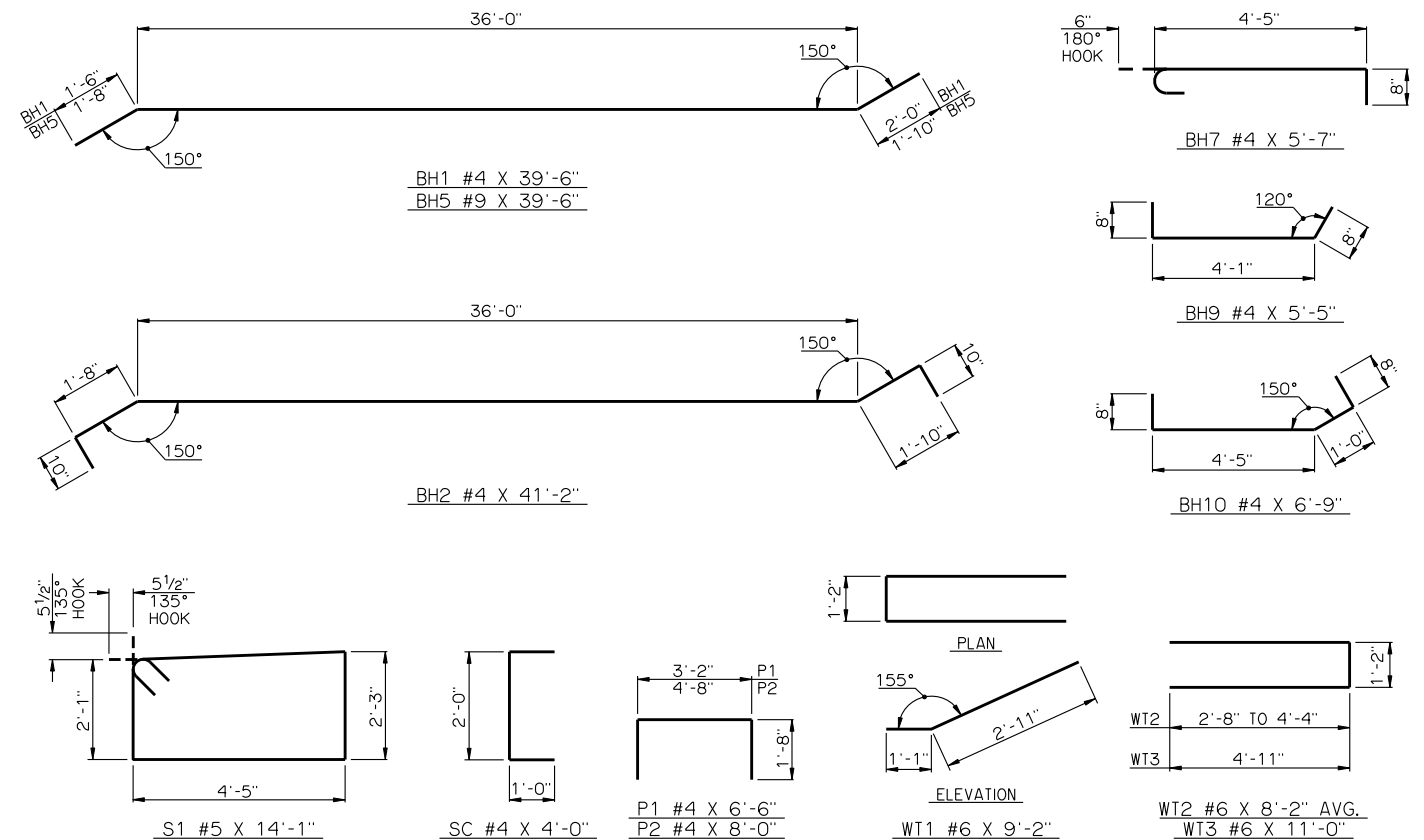
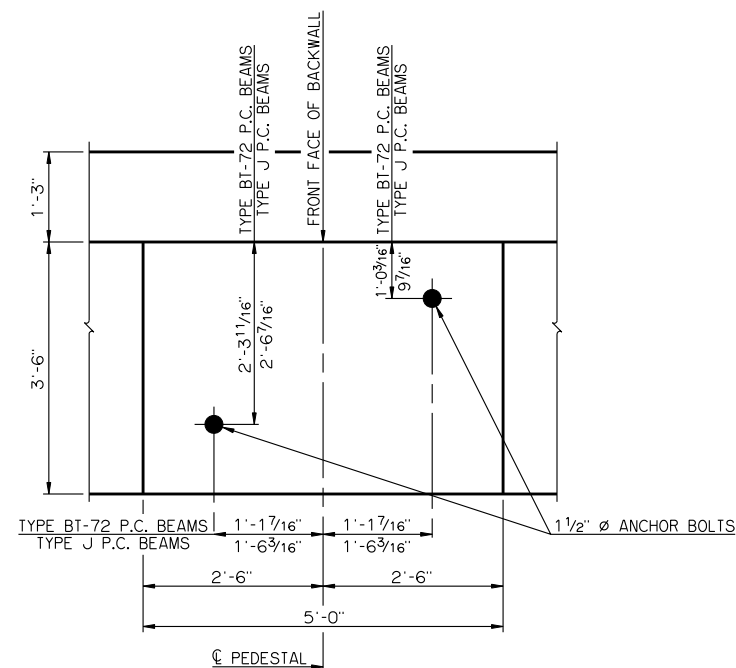


TYPICAL SECTION THRU ABUTMENT



DETAILS OF BENT REINFORCING STEEL



DETAIL OF PEDESTAL WITH LAYOUT OF ANCHOR BOLTS

BAR LIST - ONE ABUTMENT					
MARK	NO.	SIZE	FORM	LENGTH	LENGTH VARIATION
BH1	10	#4	BNT.	39'-6"	-
BH2	11	#4	BNT.	41'-2"	-
BH3	6	#9	STR.	38'-5" AVG.	37'-6" TO 39'-4"
BH4	4	#9	STR.	38'-5" AVG.	37'-6" TO 39'-4"
BH5	2	#9	BNT.	39'-6"	-
BH6	1	#4	STR.	37'-6"	-
BH7	27	#4	BNT.	5'-7"	-
BH8	2	#9	STR.	12'-9"	-
BH9	3	#4	BNT.	5'-5"	-
BH10	3	#4	BNT.	6'-9"	-
① BV1	38	#4	STR.	10'-10" AVG.	10'-8" TO 11'-0"
① BV2	38	#5	STR.	10'-10" AVG.	10'-8" TO 11'-0"
BV3	8	#6	STR.	10'-8"	-
P1	24	#4	BNT.	6'-6"	-
P2	16	#4	BNT.	8'-0"	-
S1	70	#5	BNT.	14'-1"	-
SC	6	#4	BNT.	4'-0"	-
WT1	2	#6	BNT.	9'-2"	-
② WT2	4	#6	BNT.	8'-2" AVG.	6'-6" TO 9'-10"
② WT3	26	#6	BNT.	11'-0"	-

① NO. INCLUDES TWO SETS OF 19 BARS  
 ② NO. INCLUDES TWO SETS OF 2 BARS

APPROVED BY BRIDGE ENGINEER *Robert J. Hush* DATE 10-31-2011  
 OKLAHOMA DEPARTMENT OF TRANSPORTATION  
 COUNTY BRIDGE STANDARD (ENGLISH)  
**ABUTMENT DETAILS**  
 TYPE BT-72 AND TYPE J P.C. BEAMS  
 (SHEET NO. 2 OF 2)  
 32' CLEAR ROADWAY - CONVENTIONAL - SKEWED 30°  
 2009 SPECIFICATIONS      CB32-C-SK30-ABUT-PC5-2      02E      CB-577E