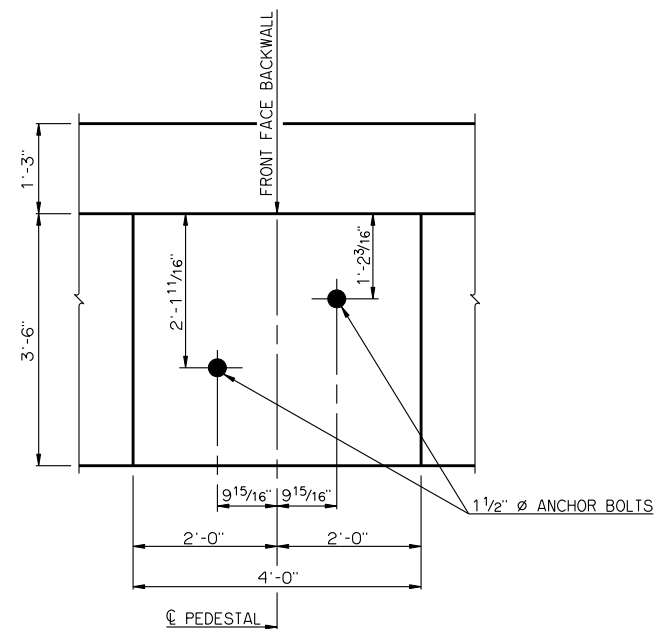
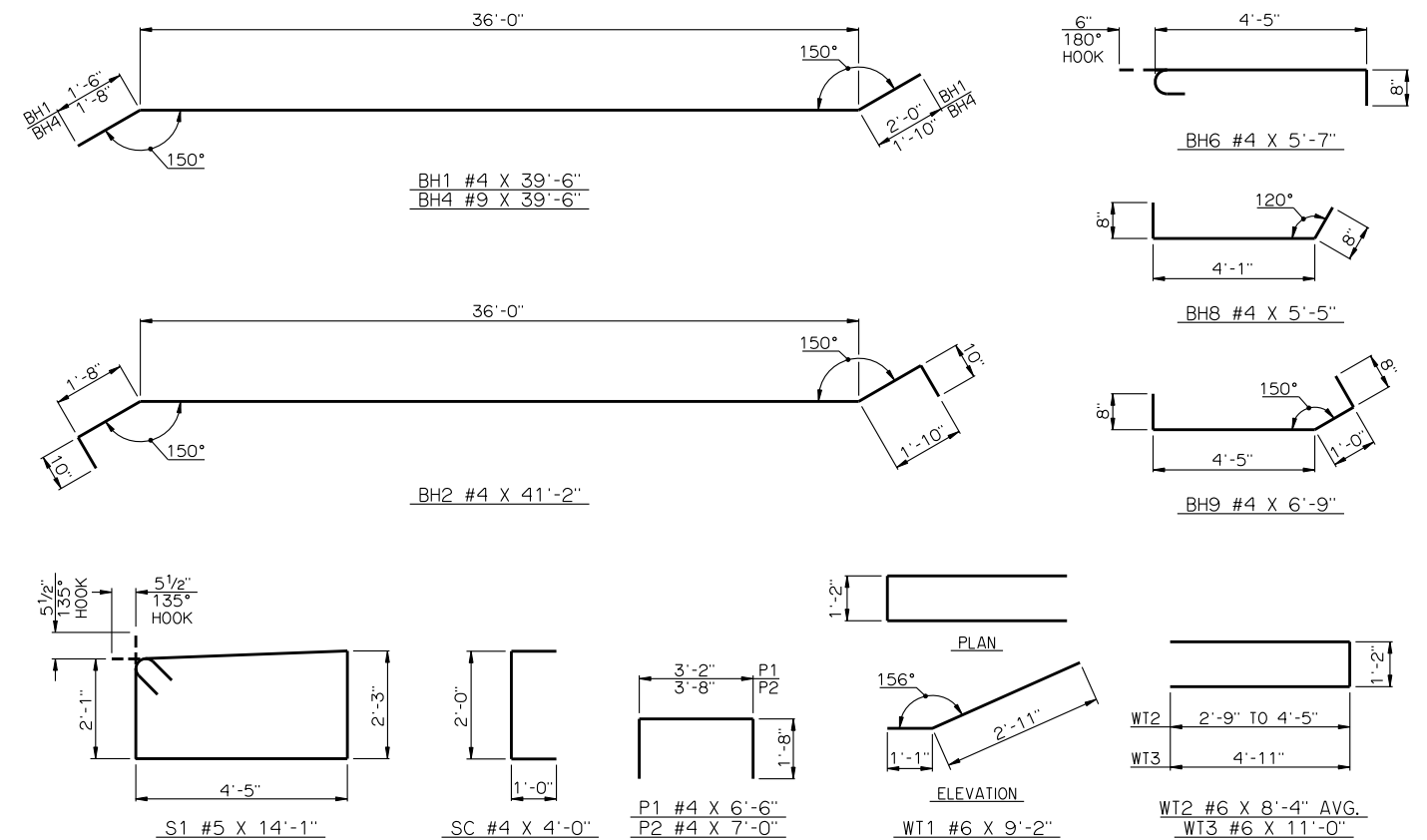


TYPICAL SECTION THRU ABUTMENT



DETAIL OF PEDESTAL WITH LAYOUT OF ANCHOR BOLTS



DETAILS OF BENT REINFORCING STEEL

BAR LIST - ONE ABUTMENT					
MARK	NO.	SIZE	FORM	LENGTH	LENGTH VARIATION
	BH1	6 #4	BNT.	39'-6"	-
	BH2	7 #4	BNT.	41'-2"	-
①	BH3	8 #9	STR.	38'-5" AVG.	37'-6" TO 39'-4"
	BH4	2 #9	BNT.	39'-6"	-
	BH5	1 #4	STR.	37'-6"	-
	BH6	15 #4	BNT.	5'-7"	-
	BH7	2 #9	STR.	12'-9"	-
	BH8	3 #4	BNT.	5'-5"	-
	BH9	3 #4	BNT.	6'-9"	-
②	BV1	38 #4	STR.	7'-8" AVG.	7'-6" TO 7'-10"
②	BV2	38 #5	STR.	7'-8" AVG.	7'-6" TO 7'-10"
	BV3	8 #6	STR.	7'-6"	-
	P1	20 #4	BNT.	6'-6"	-
	P2	16 #4	BNT.	7'-0"	-
	S1	38 #5	BNT.	14'-1"	-
	SC	6 #4	BNT.	4'-0"	-
③	WT1	2 #6	BNT.	9'-2"	-
③	WT2	4 #6	BNT.	8'-4" AVG.	6'-8" TO 10'-0"
③	WT3	18 #6	BNT.	11'-0"	-

① NO. INCLUDES TWO SETS OF 4 BARS  
 ② NO. INCLUDES TWO SETS OF 19 BARS  
 ③ NO. INCLUDES TWO SETS OF 2 BARS

APPROVED BY BRIDGE ENGINEER *Robert J. Hush* DATE 10-31-2011  
 OKLAHOMA DEPARTMENT OF TRANSPORTATION  
 COUNTY BRIDGE STANDARD (ENGLISH)  
**ABUTMENT DETAILS**  
 TYPE II AND TYPE B P.C. BEAMS  
 (SHEET NO. 2 OF 2)  
 32' CLEAR ROADWAY - CONVENTIONAL - SKEWED 30°  
 2009 SPECIFICATIONS CB32-C-SK30-ABUT-PC2-2 02E  
 CB-571E