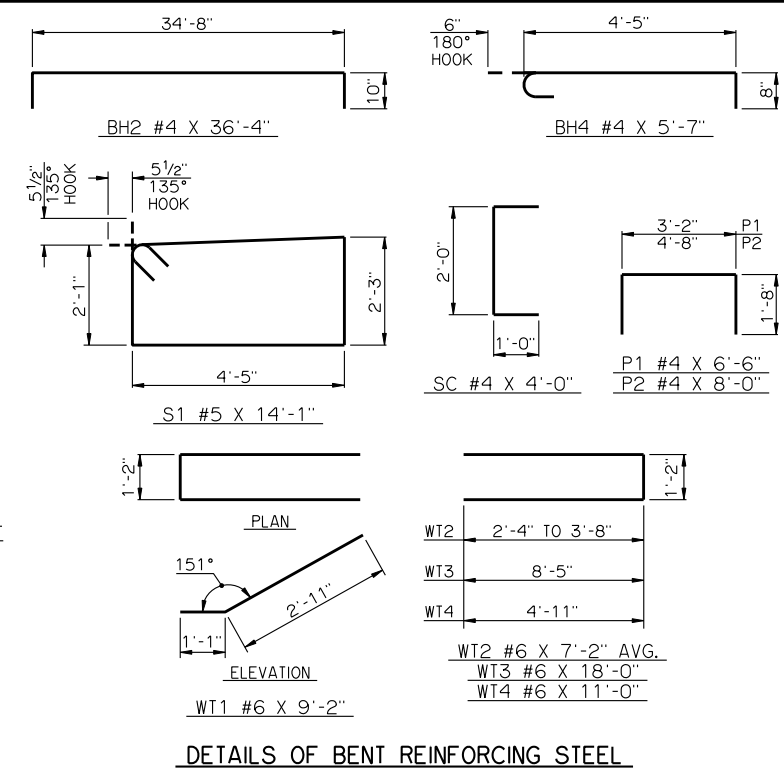
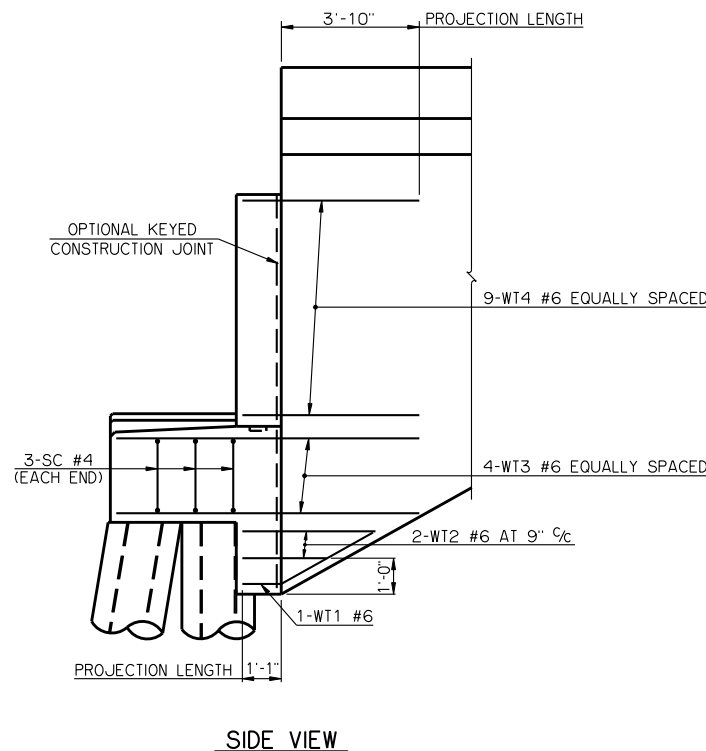
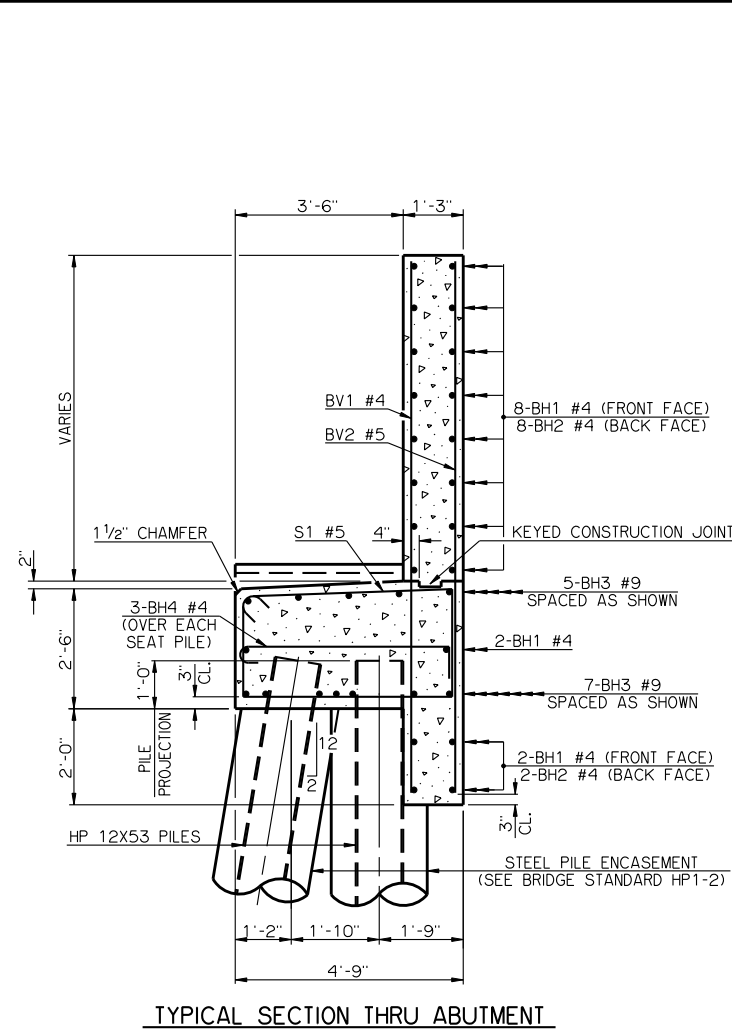
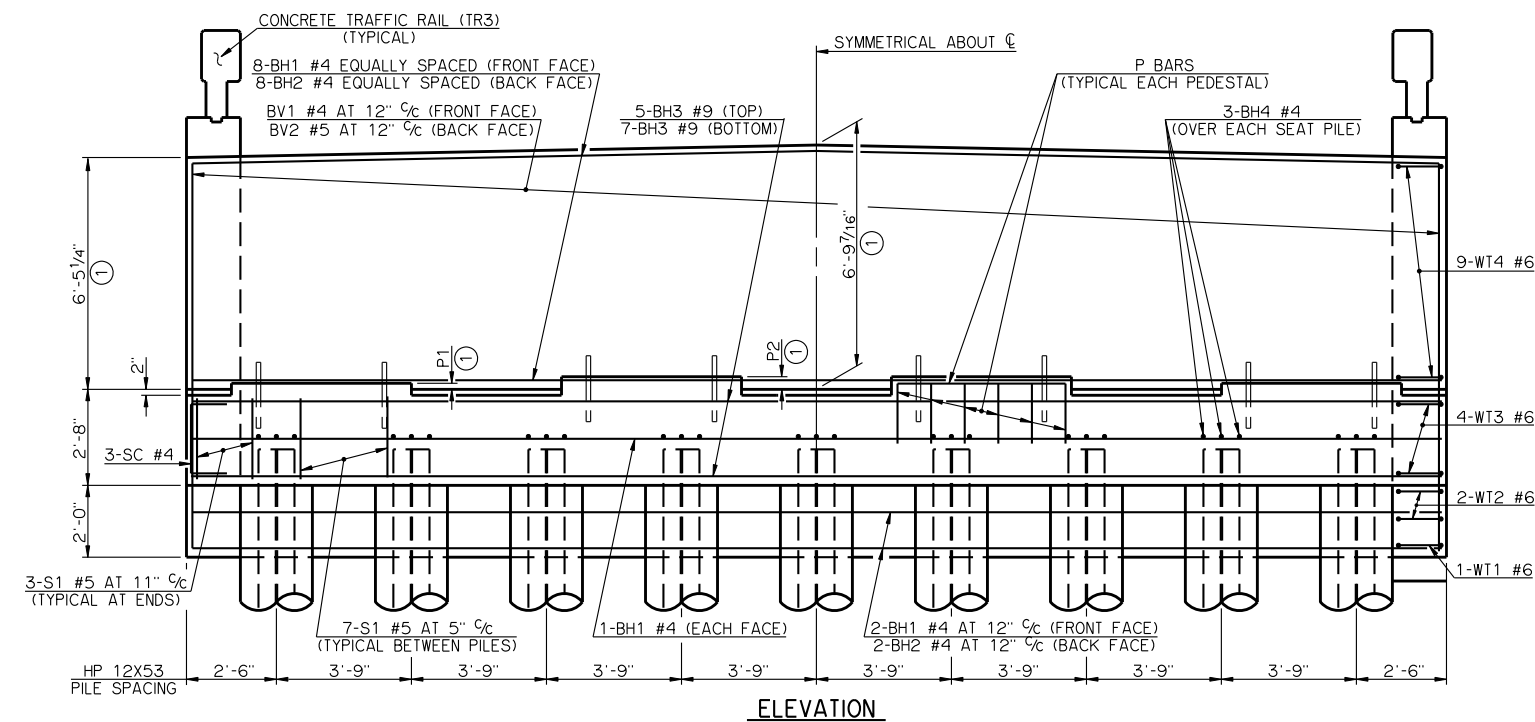


PILE SCHEDULE	
SPAN	MAXIMUM FACTORED PILE LOAD
120'	75.5 TON
125'	77.4 TON
130'	79.3 TON
135'	81.2 TON
140'	83.0 TON
145'	84.9 TON

PEDESTAL DIMENSIONS		
BEAM TYPE	P1	P2
TYPE BT-72	2 1/2"	4 11/16"
TYPE J	2"	4 3/16"



BAR LIST - ONE ABUTMENT					
MARK	NO.	SIZE	FORM	LENGTH	LENGTH VARIATION
BH1	12	#4	STR.	34'-8"	-
BH2	10	#4	BNT.	36'-4"	-
BH3	12	#9	STR.	34'-8"	-
BH4	27	#4	BNT.	5'-7"	-
BV1	36	#4	STR.	10'-10" AVG.	10'-8" TO 11'-0"
BV2	36	#5	STR.	10'-10" AVG.	10'-8" TO 11'-0"
P1	24	#4	BNT.	6'-6"	-
P2	16	#4	BNT.	8'-0"	-
S1	62	#5	BNT.	14'-1"	-
SC	6	#4	BNT.	4'-0"	-
WT1	2	#6	BNT.	9'-2"	-
WT2	4	#6	BNT.	7'-2" AVG.	5'-10" TO 8'-6"
WT3	8	#6	BNT.	18'-0"	-
WT4	18	#6	BNT.	11'-0"	-

③ NO. INCLUDES TWO SETS OF 18 BARS  
 ④ NO. INCLUDES TWO SETS OF 2 BARS

SUMMARY OF QUANTITIES - ONE ABUTMENT ⑤		
ITEM	UNIT	TOTAL
SUBSTRUCTURE EXCAVATION, COMMON	CY	80.00
GRANULAR BACKFILL	CY	74.00
CLASS A CONCRETE	CY	31.00
REINFORCING STEEL	LB	4,410.00
PILES, FURNISHED (HP 12X53)	LF	-
PILES, DRIVEN (HP 12X53)	LF	-
6" PERFORATED PIPE UNDERDRAIN	LF	32.00
6" NON-PERFORATED PIPE UNDERDRAIN	LF	-

⑤ EXCLUDES WINGS  
 ① DIMENSIONS ARE FROM TOP OF BRIDGE SEAT AT FRONT FACE OF BACKWALL.  
 ② ALL WT WING REINFORCING STEEL TIED TO THE ABUTMENT BRIDGE SEAT, BACKWALL AND CURTAIN WALL REINFORCING STEEL MUST BE IN PLACE PRIOR TO POURING ABUTMENT CONCRETE. FOR ADDITIONAL INFORMATION SEE WING DETAILS.

APPROVED BY BRIDGE ENGINEER *Robert J. Dush* DATE 10-31-2011  
 OKLAHOMA DEPARTMENT OF TRANSPORTATION  
 COUNTY BRIDGE STANDARD (ENGLISH)  
**ABUTMENT DETAILS**  
**TYPE BT-72 AND TYPE J P.C. BEAMS**  
**32' CLEAR ROADWAY - CONVENTIONAL - SKEWED 0°**  
 2009 SPECIFICATIONS CB32-C-SKO-ABUT-PC5 02E  
 CB-527E