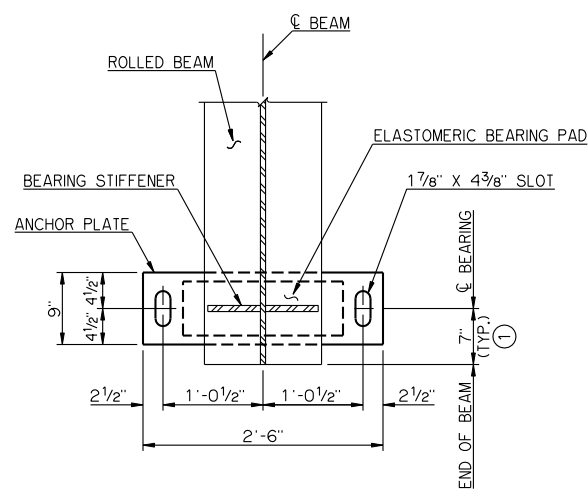
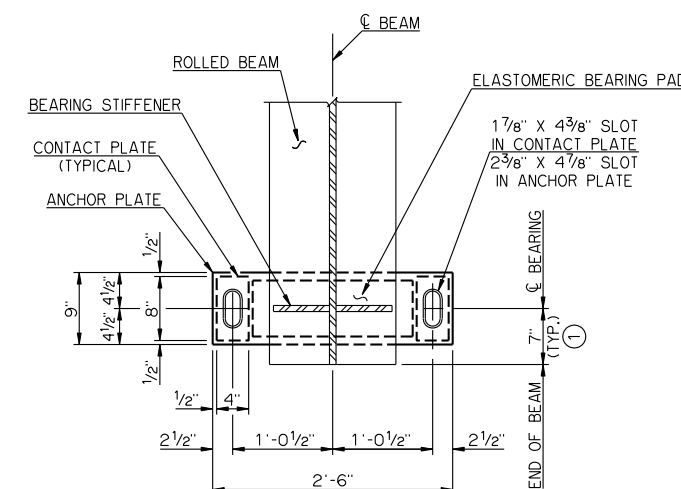


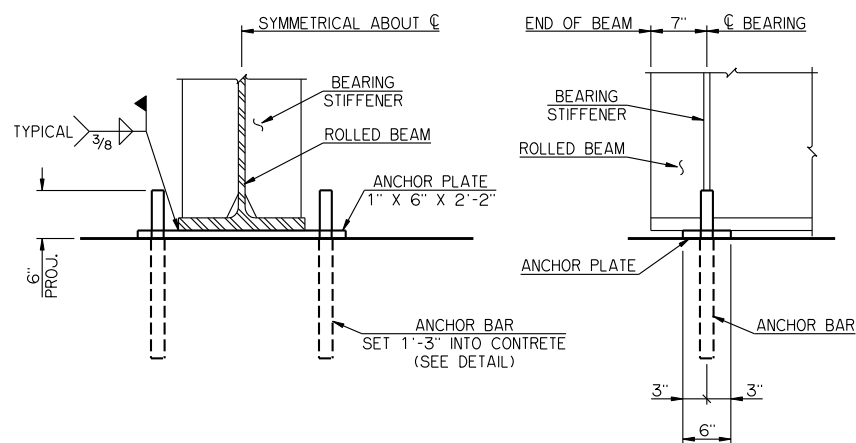
PLAN
ANCHOR BOLT ASSEMBLIES NOT SHOWN



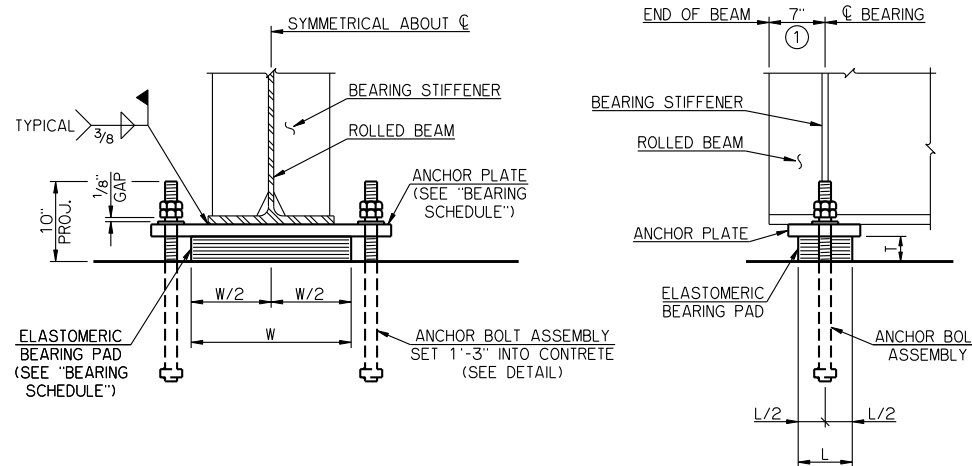
PLAN
ANCHOR BOLT ASSEMBLIES NOT SHOWN



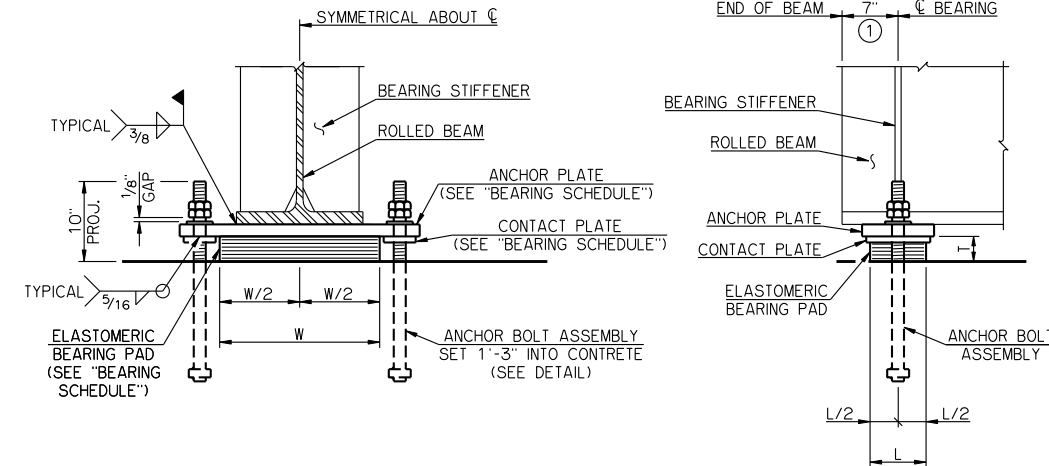
PLAN
ANCHOR BOLT ASSEMBLIES NOT SHOWN



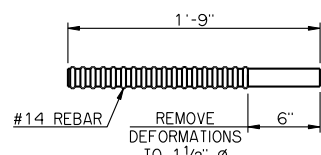
END VIEW
SIDE VIEW
ABUTMENT BEARING DETAILS



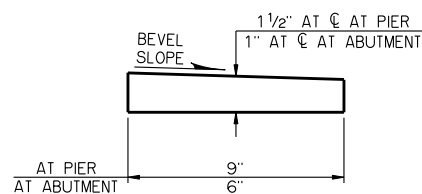
END VIEW
SIDE VIEW
PIER BEARING DETAILS
30' THRU 70' SPANS AND 80' SPAN



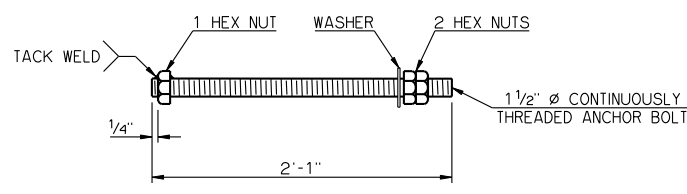
END VIEW
SIDE VIEW
PIER BEARING DETAILS
75' SPAN AND 85' THRU 100' SPANS



ANCHOR BAR DETAIL



BEVELED ANCHOR PLATE DETAIL
BEVELED ANCHOR PLATE IS REQUIRED WHEN ANGLE BETWEEN UNDERSIDE OF BEAM AND HORIZONTAL EXCEEDS 1.0%. BEVEL SLOPE TO MATCH ANGLE BETWEEN BEAM AND HORIZONTAL. PAINT THICKER EDGE RED.



ANCHOR BOLT ASSEMBLY DETAIL

| SPAN | ANCHOR PLATE | CONTACT PLATE | 60 DUROMETER ELASTOMERIC BEARING PAD | | | | MAXIMUM EXPANSION LENGTH WITHOUT BONDING |
|------|---------------------|----------------|--------------------------------------|-------------|-------------|----------------|--|
| | | | SIZE (T X L X W) | COVER LAYER | INNER LAYER | LAMINATE PLATE | |
| 30' | 1 1/2" X 9" X 2'-6" | --- | 3 3/8" X 6 1/2" X 1'-4" | 2-1/4" | 6-3/8" | 7-1/8" | 65' |
| 35' | 1 1/2" X 9" X 2'-6" | --- | 3 3/8" X 6 1/2" X 1'-4" | 2-1/4" | 6-3/8" | 7-1/8" | 80' |
| 40' | 1 1/2" X 9" X 2'-6" | --- | 3 3/8" X 6 3/4" X 1'-4" | 2-1/4" | 6-3/8" | 7-1/8" | 90' |
| 45' | 1 1/2" X 9" X 2'-6" | --- | 3 3/8" X 6 3/4" X 1'-4" | 2-1/4" | 6-3/8" | 7-1/8" | 100' |
| 50' | 1 1/2" X 9" X 2'-6" | --- | 3 3/8" X 7" X 1'-4" | 2-1/4" | 6-3/8" | 7-1/8" | 110' |
| 55' | 1 1/2" X 9" X 2'-6" | --- | 3 3/8" X 7" X 1'-4" | 2-1/4" | 6-3/8" | 7-1/8" | 120' |
| 60' | 1 1/2" X 9" X 2'-6" | --- | 3 3/8" X 7" X 1'-5" | 2-1/4" | 6-3/8" | 7-1/8" | 125' |
| 65' | 1 1/2" X 9" X 2'-6" | --- | 3 3/8" X 7 1/4" X 1'-5" | 2-1/4" | 6-3/8" | 7-1/8" | 135' |
| 70' | 1 1/2" X 9" X 2'-6" | --- | 3 3/8" X 7 1/4" X 1'-5" | 2-1/4" | 6-3/8" | 7-1/8" | 145' |
| 75' | 1 1/2" X 9" X 2'-6" | 1/2" X 4" X 8" | 3 3/8" X 7 1/4" X 1'-5" | 2-1/4" | 6-3/8" | 7-1/8" | 150' |
| 80' | 1 1/2" X 9" X 2'-6" | --- | 3 1/8" X 6 3/4" X 1'-8" | 2-1/4" | 5-3/8" | 6-1/8" | 130' |
| 85' | 1 1/2" X 9" X 2'-6" | 1/2" X 4" X 8" | 3 1/8" X 6 3/4" X 1'-8" | 2-1/4" | 5-3/8" | 6-1/8" | 130' |
| 90' | 1 1/2" X 9" X 2'-6" | 1/2" X 4" X 8" | 3 1/8" X 6 3/4" X 1'-8" | 2-1/4" | 5-3/8" | 6-1/8" | 130' |
| 95' | 1 1/2" X 9" X 2'-6" | 1/2" X 4" X 8" | 3 1/8" X 7" X 1'-8" | 2-1/4" | 5-3/8" | 6-1/8" | 130' |
| 100' | 1 1/2" X 9" X 2'-6" | 3/4" X 4" X 8" | 3 1/8" X 7" X 1'-8" | 2-1/4" | 5-3/8" | 6-1/8" | 130' |

NOTES

STRUCTURAL STEEL FOR ANCHOR PLATES, CONTACT PLATES AND CONTINUOUSLY THREADED ANCHOR BOLTS SHALL CONFORM TO AASHTO M 270 (ASTM A 709), GRADE 50W, WEATHERING STEEL (CHARPY V-NOTCH TESTING NOT REQUIRED). HEX NUTS SHALL CONFORM TO AASHTO M 291 (ASTM A 563). WASHERS SHALL CONFORM TO AASHTO M 293 (ASTM F 436), TYPE 3. ANCHOR BARS SHALL BE FABRICATED FROM REINFORCING STEEL CONFORMING TO AASHTO M 31, GRADE 60. ANCHOR BOLT ASSEMBLIES AND ANCHOR BARS SHALL BE GALVANIZED, AND ALL OTHER STEEL PARTS COMPRISING THE BEARING ASSEMBLIES SHALL BE PAINTED WITH THE IZ-E-U PAINT SYSTEM.

① ANCHOR BOLTS SHALL BE CENTERED IN SLOTS DURING SETTING OF BEAMS. DIMENSION MAY VARY DEPENDING ON TEMPERATURE AT THE TIME OF BEAM SETTING.

APPROVED BY BRIDGE ENGINEER *Robert D. Duch* DATE 9-9-2011

OKLAHOMA DEPARTMENT OF TRANSPORTATION
COUNTY BRIDGE STANDARD (ENGLISH)

BEARING DETAILS
ROLLED BEAMS