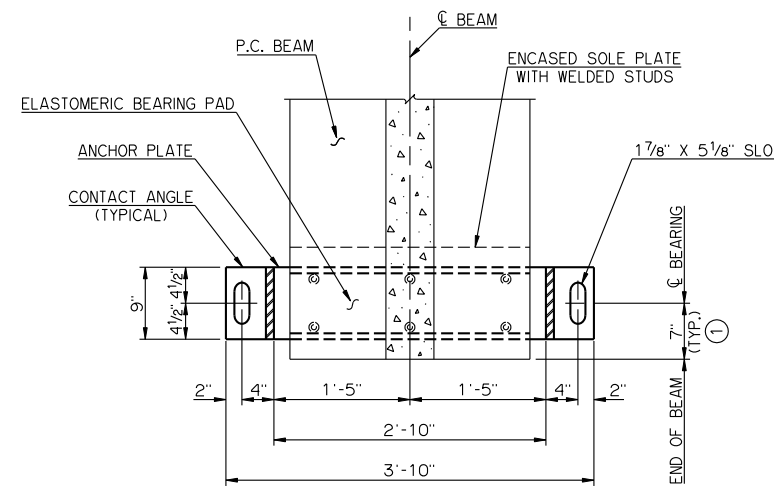
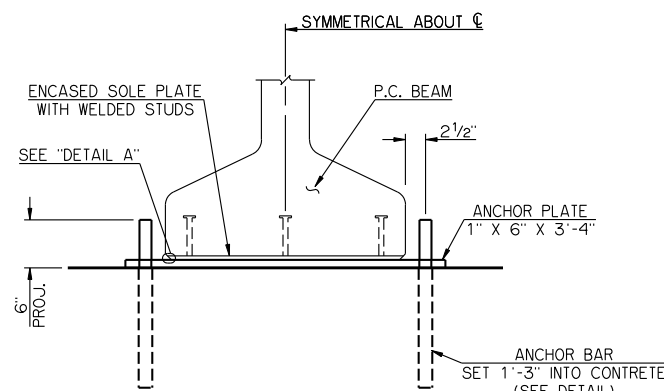


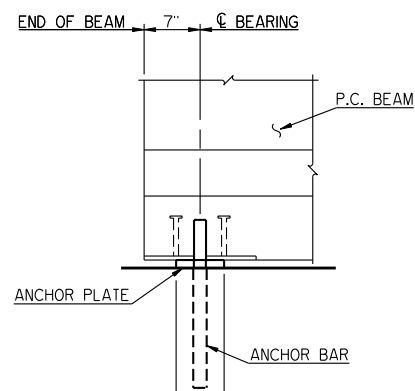
PLAN  
ANCHOR BARS NOT SHOWN



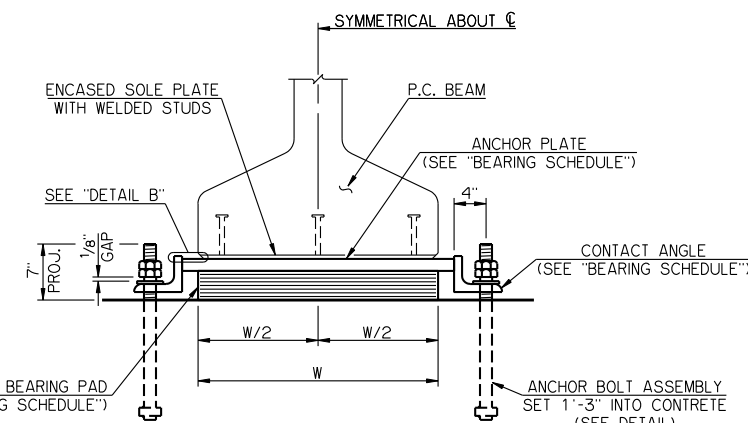
PLAN  
ANCHOR BOLT ASSEMBLIES NOT SHOWN



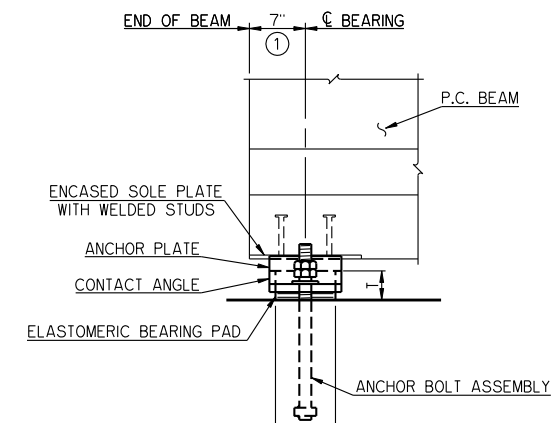
END VIEW



SIDE VIEW



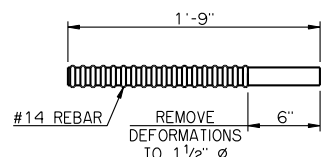
END VIEW



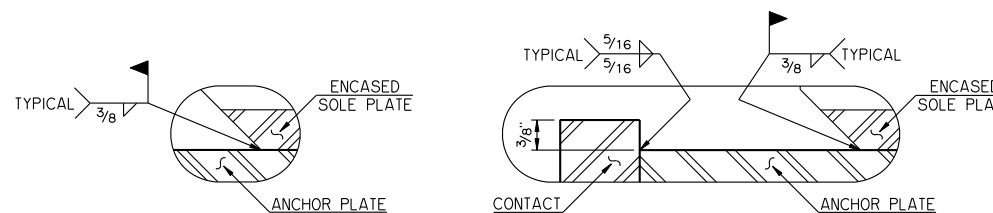
SIDE VIEW

ABUTMENT BEARING DETAILS

PIER BEARING DETAILS

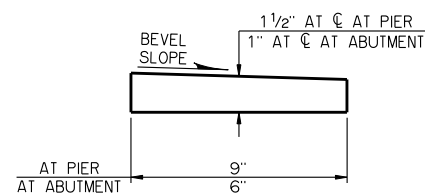


ANCHOR BAR DETAIL



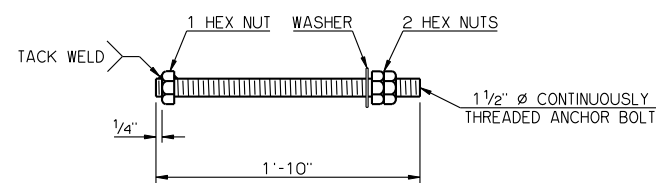
DETAIL A

DETAIL B



BEVELED ANCHOR PLATE DETAIL

BEVELED ANCHOR PLATE IS REQUIRED WHEN ANGLE BETWEEN UNDERSIDE OF BEAM AND HORIZONTAL EXCEEDS 1.0%. BEVEL SLOPE TO MATCH ANGLE BETWEEN BEAM AND HORIZONTAL. PAINT THICKER EDGE RED.



ANCHOR BOLT ASSEMBLY DETAIL

SPAN	ANCHOR PLATE	CONTACT ANGLE ②	60 DUROMETER ELASTOMERIC BEARING PAD			MAXIMUM EXPANSION LENGTH WITHOUT BONDING	
			SIZE (T X L X W)	COVER LAYER	INNER LAYER		
110'	1 1/2" X 9" X 2'-10"	6 X 4 1/2 X 1 X 9"	3 9/8" X 7 1/4" X 2'-6"	2-1/4"	6-3/8"	7-1/8"	305'
115'	1 1/2" X 9" X 2'-10"	6 X 4 1/2 X 1 X 9"	3 9/8" X 7 1/4" X 2'-6"	2-1/4"	6-3/8"	7-1/8"	305'
120'	1 1/2" X 9" X 2'-10"	6 X 4 1/2 X 1 X 9"	3 9/8" X 7 1/4" X 2'-6"	2-1/4"	6-3/8"	7-1/8"	305'
125'	1 1/2" X 9" X 2'-10"	6 X 4 1/2 X 1 X 9"	3 9/8" X 7 1/2" X 2'-6"	2-1/4"	6-3/8"	7-1/8"	305'
130'	1 1/2" X 9" X 2'-10"	6 X 4 1/2 X 1 X 9"	3 9/8" X 7 1/2" X 2'-6"	2-1/4"	6-3/8"	7-1/8"	305'
135'	1 1/2" X 9" X 2'-10"	6 X 4 1/2 X 1 X 9"	3 9/8" X 7 1/2" X 2'-6"	2-1/4"	6-3/8"	7-1/8"	305'

NOTES

STRUCTURAL STEEL FOR ANCHOR PLATES, CONTACT ANGLES AND CONTINUOUSLY THREADED ANCHOR BOLTS SHALL CONFORM TO AASHTO M 270 (ASTM A 709), GRADE 50W, WEATHERING STEEL (CHARPY V-NOTCH TESTING NOT REQUIRED). HEX NUTS SHALL CONFORM TO AASHTO M 291 (ASTM A 563). WASHERS SHALL CONFORM TO AASHTO M 293 (ASTM F 436), TYPE 3. ANCHOR BARS SHALL BE FABRICATED FROM REINFORCING STEEL CONFORMING TO AASHTO M 31, GRADE 60. ANCHOR BOLT ASSEMBLIES AND ANCHOR BARS SHALL BE GALVANIZED, AND ALL OTHER STEEL PARTS COMPRISING THE BEARING ASSEMBLIES SHALL BE PAINTED WITH THE IZ-E-U PAINT SYSTEM.

- ① ANCHOR BOLTS SHALL BE CENTERED IN SLOTS DURING SETTING OF BEAMS. DIMENSION MAY VARY AT EXPANSION BEARING DEPENDING ON TEMPERATURE AT THE TIME OF BEAM SETTING.
- ② FABRICATE L 6 X 4 1/2 X 1 BY CUTTING 1 1/2" FROM VERTICAL LEG OF L 6 X 6 X 1.

APPROVED BY BRIDGE ENGINEER *Robert D. Smith* DATE 9-9-2011  
 OKLAHOMA DEPARTMENT OF TRANSPORTATION  
 COUNTY BRIDGE STANDARD (ENGLISH)  
**BEARING DETAILS**  
**TYPE J P.C. BEAMS**  
 26' CLEAR ROADWAY - INTEGRAL - SKEWED 0°  
 2009 SPECIFICATIONS CB26-I-SKO-BRG-PC5 01E  
 CB-508E