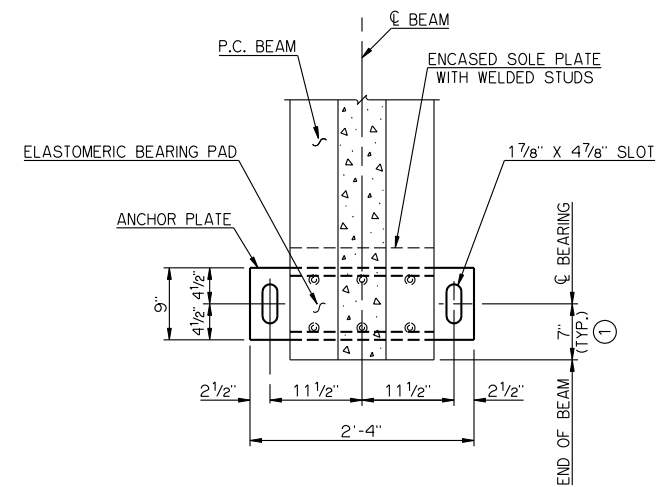
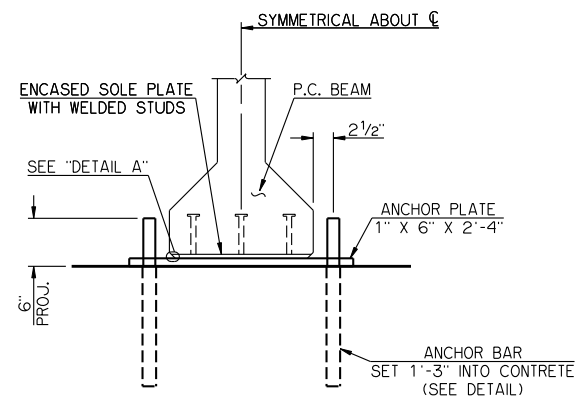


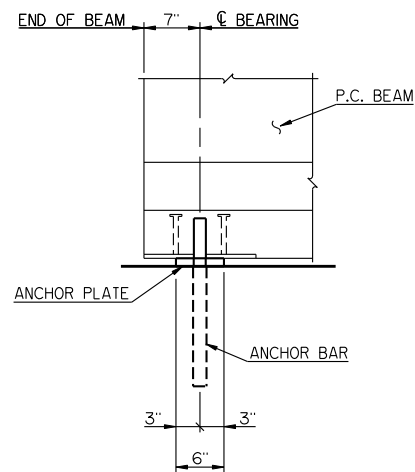
PLAN
ANCHOR BARS NOT SHOWN



PLAN
ANCHOR BOLT ASSEMBLIES NOT SHOWN

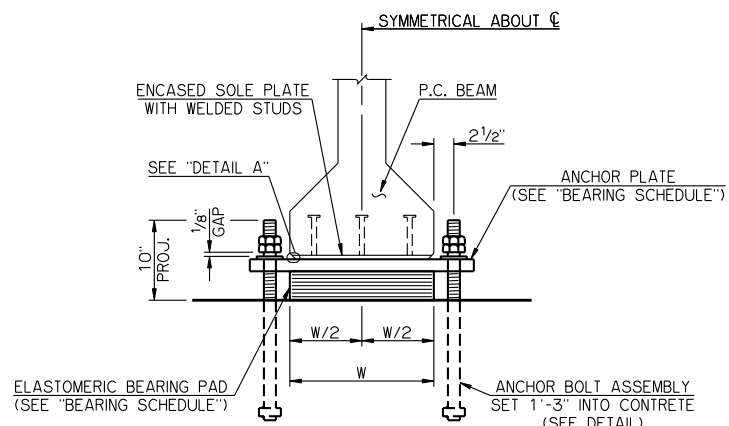


END VIEW

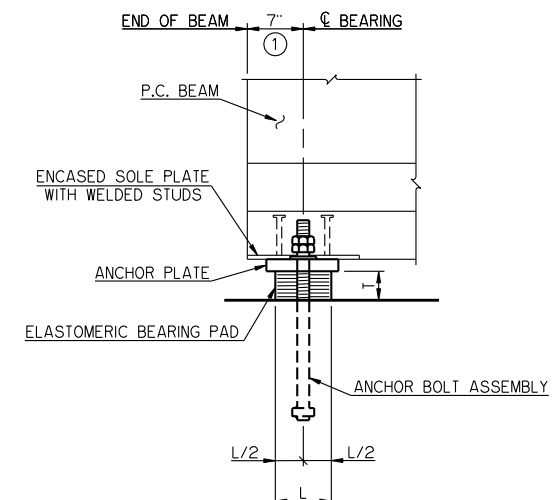


SIDE VIEW

ABUTMENT BEARING DETAILS

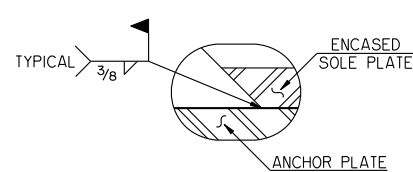


END VIEW

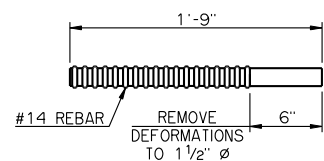


SIDE VIEW

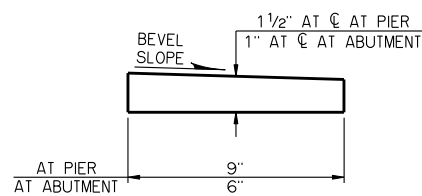
PIER BEARING DETAILS



DETAIL A

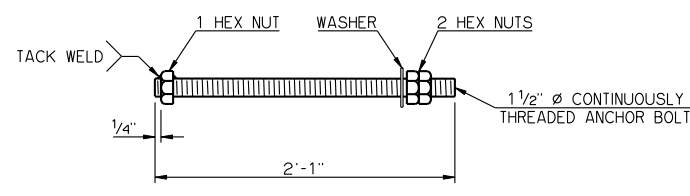


ANCHOR BAR DETAIL



BEVELED ANCHOR PLATE DETAIL

BEVELED ANCHOR PLATE IS REQUIRED WHEN ANGLE BETWEEN UNDERSIDE OF BEAM AND HORIZONTAL EXCEEDS 1.0%. BEVEL SLOPE TO MATCH ANGLE BETWEEN BEAM AND HORIZONTAL. PAINT THICKER EDGE RED.



ANCHOR BOLT ASSEMBLY DETAIL

NOTES

STRUCTURAL STEEL FOR ANCHOR PLATES AND CONTINUOUSLY THREADED ANCHOR BOLTS SHALL CONFORM TO AASHTO M 270 (ASTM A 709), GRADE 50W, WEATHERING STEEL (CHARPY V-NOTCH TESTING NOT REQUIRED). HEX NUTS SHALL CONFORM TO AASHTO M 291 (ASTM A 563). WASHERS SHALL CONFORM TO AASHTO M 293 (ASTM F 436), TYPE 3. ANCHOR BARS SHALL BE FABRICATED FROM REINFORCING STEEL CONFORMING TO AASHTO M 31, GRADE 60. ANCHOR BOLT ASSEMBLIES AND ANCHOR BARS SHALL BE GALVANIZED, AND ALL OTHER STEEL PARTS COMPRISING THE BEARING ASSEMBLIES SHALL BE PAINTED WITH THE IZ-E-U PAINT SYSTEM.

① ANCHOR BOLTS SHALL BE CENTERED IN SLOTS DURING SETTING OF BEAMS. DIMENSION MAY VARY DEPENDING ON TEMPERATURE AT THE TIME OF BEAM SETTING.

SPAN	ANCHOR PLATE	60 DUROMETER ELASTOMERIC BEARING PAD			MAXIMUM EXPANSION LENGTH WITHOUT BONDING
		SIZE (T X L X W)	COVER LAYER	INNER LAYER LAMINATE PLATE	
30'	1 1/2" X 9" X 2'-4"	3 5/8" X 6 1/4" X 1'-6"	2-1/4"	6-3/8"	160'
35'	1 1/2" X 9" X 2'-4"	3 5/8" X 6 1/4" X 1'-6"	2-1/4"	6-3/8"	185'
40'	1 1/2" X 9" X 2'-4"	3 5/8" X 6 1/2" X 1'-6"	2-1/4"	6-3/8"	205'
45'	1 1/2" X 9" X 2'-4"	3 5/8" X 6 3/4" X 1'-6"	2-1/4"	6-3/8"	220'
50'	1 1/2" X 9" X 2'-4"	3 5/8" X 7" X 1'-6"	2-1/4"	6-3/8"	235'
55'	1 1/2" X 9" X 2'-4"	3 5/8" X 7" X 1'-6"	2-1/4"	6-3/8"	260'
60'	1 1/2" X 9" X 2'-4"	3 5/8" X 7" X 1'-6"	2-1/4"	6-3/8"	285'

APPROVED BY BRIDGE ENGINEER *Robert J. Duch* DATE 9-9-2011

OKLAHOMA DEPARTMENT OF TRANSPORTATION
COUNTY BRIDGE STANDARD (ENGLISH)

BEARING DETAILS
TYPE II AND TYPE B P.C. BEAMS

26' CLEAR ROADWAY - INTEGRAL - SKEWED 0°