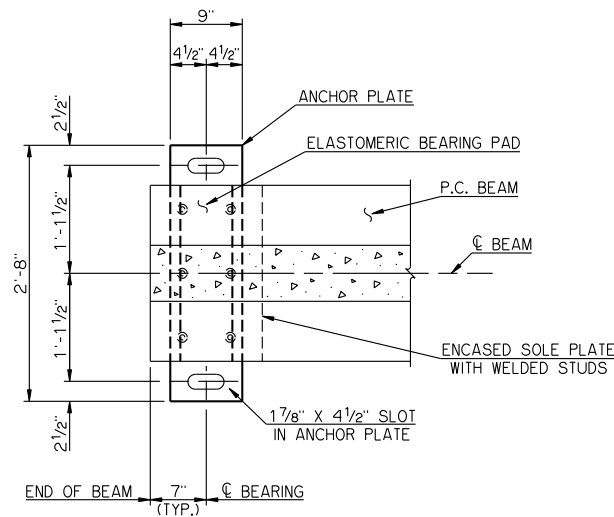
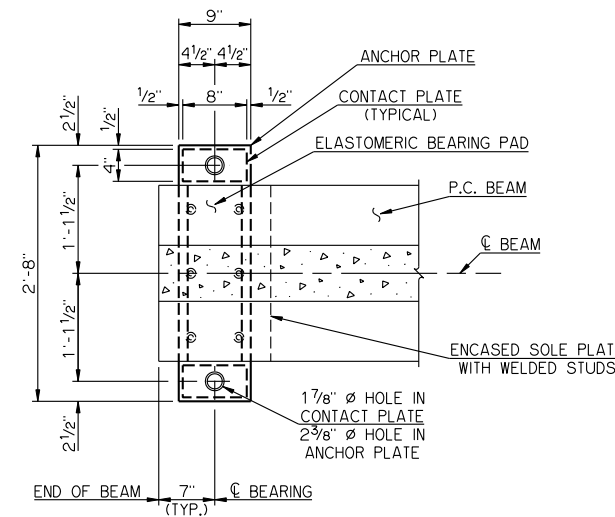


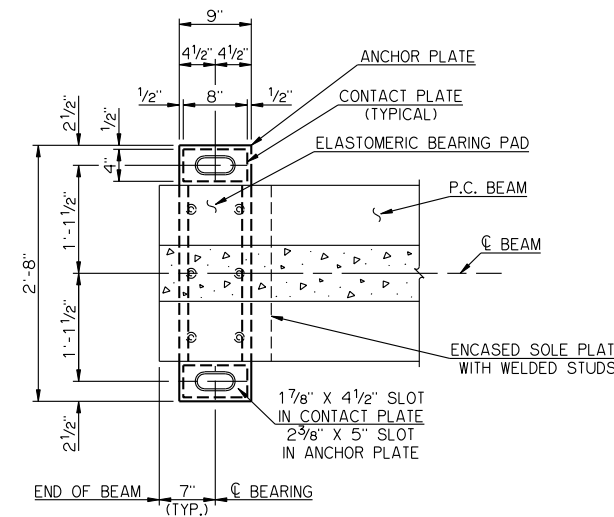
FIXED BEARING PLAN
ANCHOR BOLT ASSEMBLIES NOT SHOWN



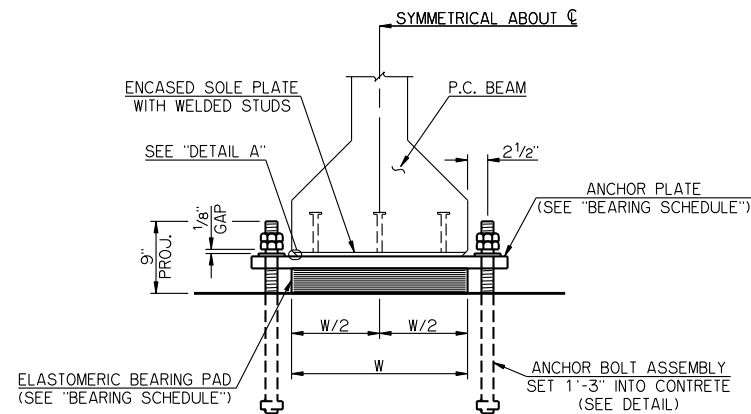
EXPANSION BEARING PLAN
ANCHOR BOLT ASSEMBLIES NOT SHOWN



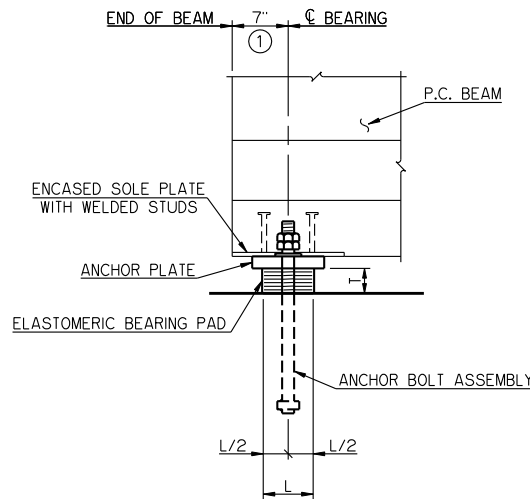
FIXED BEARING PLAN
ANCHOR BOLT ASSEMBLIES NOT SHOWN



EXPANSION BEARING PLAN
ANCHOR BOLT ASSEMBLIES NOT SHOWN

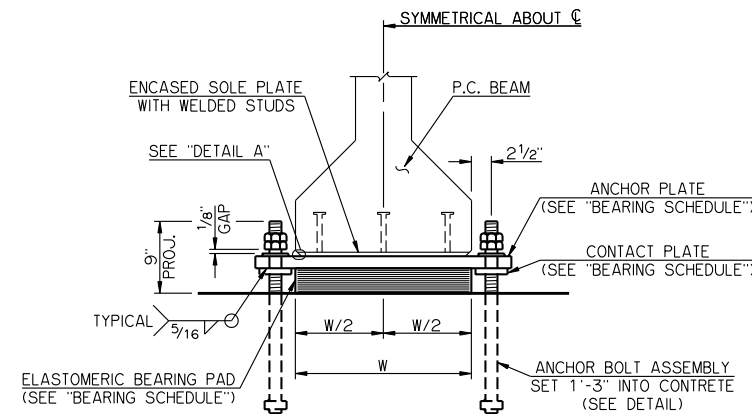


END VIEW

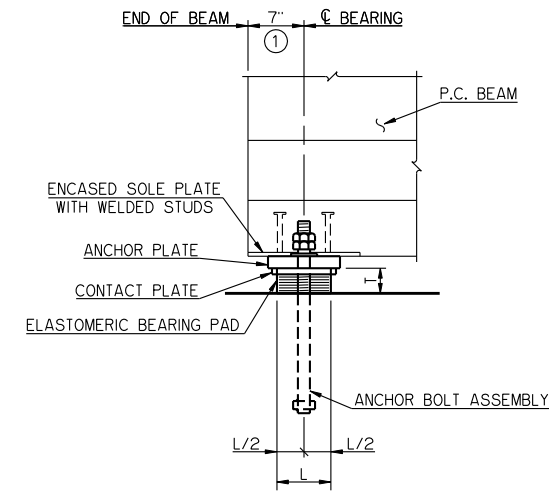


SIDE VIEW

BEARING DETAILS
60' AND 65' SPANS

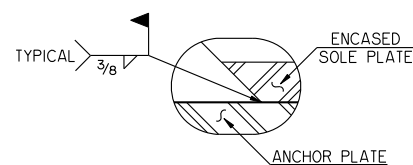


END VIEW

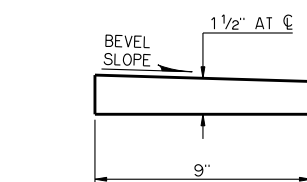


SIDE VIEW

BEARING DETAILS
70' THRU 85' SPANS

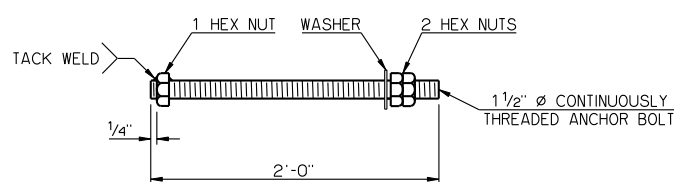


DETAIL A



BEVELED ANCHOR PLATE DETAIL

BEVELED ANCHOR PLATE IS REQUIRED WHEN ANGLE BETWEEN UNDERSIDE OF BEAM AND HORIZONTAL EXCEEDS 1.0%. BEVEL SLOPE TO MATCH ANGLE BETWEEN BEAM AND HORIZONTAL. PAINT THICKER EDGE RED.



ANCHOR BOLT ASSEMBLY DETAIL

SPAN	ANCHOR PLATE	CONTACT PLATE	60 DUROMETER ELASTOMERIC BEARING PAD			MAXIMUM EXPANSION LENGTH WITHOUT BONDING	
			SIZE (T X L X W)	COVER LAYER	INNER LAYER		
60'	1 1/2" X 9" X 2'-8"	---	3 1/8" X 6 1/2" X 1'-10"	2-1/4"	5-3/8"	6-1/8"	235'
65'	1 1/2" X 9" X 2'-8"	---	3 1/8" X 6 1/2" X 1'-10"	2-1/4"	5-3/8"	6-1/8"	255'
70'	1 1/2" X 9" X 2'-8"	1/2" X 4" X 8"	3 1/8" X 6 1/2" X 1'-10"	2-1/4"	5-3/8"	6-1/8"	260'
75'	1 1/2" X 9" X 2'-8"	1/2" X 4" X 8"	3 1/8" X 6 3/4" X 1'-10"	2-1/4"	5-3/8"	6-1/8"	260'
80'	1 1/2" X 9" X 2'-8"	1/2" X 4" X 8"	3 1/8" X 6 3/4" X 1'-10"	2-1/4"	5-3/8"	6-1/8"	260'
85'	1 1/2" X 9" X 2'-8"	3/4" X 4" X 8"	3 1/8" X 6 3/4" X 1'-10"	2-1/4"	5-3/8"	6-1/8"	260'

NOTES

STRUCTURAL STEEL FOR ANCHOR PLATES, CONTACT PLATES AND CONTINUOUSLY THREADED ANCHOR BOLTS SHALL CONFORM TO AASHTO M 270 (ASTM A 709), GRADE 50W, WEATHERING STEEL (CHARPY V-NOTCH TESTING NOT REQUIRED). HEX NUTS SHALL CONFORM TO AASHTO M 291 (ASTM A 563). WASHERS SHALL CONFORM TO AASHTO M 293 (ASTM F 436), TYPE 3. ANCHOR BOLT ASSEMBLIES SHALL BE GALVANIZED, AND ALL OTHER STEEL PARTS COMPRISING THE BEARING ASSEMBLIES SHALL BE PAINTED WITH THE IZ-E-U PAINT SYSTEM.

① ANCHOR BOLTS SHALL BE CENTERED IN SLOTS DURING SETTING OF BEAMS. DIMENSION MAY VARY AT EXPANSION BEARING DEPENDING ON TEMPERATURE AT THE TIME OF BEAM SETTING.

APPROVED BY BRIDGE ENGINEER *Robert D. Smith* DATE 9-9-2011
 OKLAHOMA DEPARTMENT OF TRANSPORTATION
 COUNTY BRIDGE STANDARD (ENGLISH)
BEARING DETAILS
TYPE III AND TYPE C P.C. BEAMS
 26' CLEAR ROADWAY - CONVENTIONAL - SKEWED 0° AND 30°
 2009 SPECIFICATIONS CB26-C-SKO.30-BRG-PC3 01E
 CB-360E