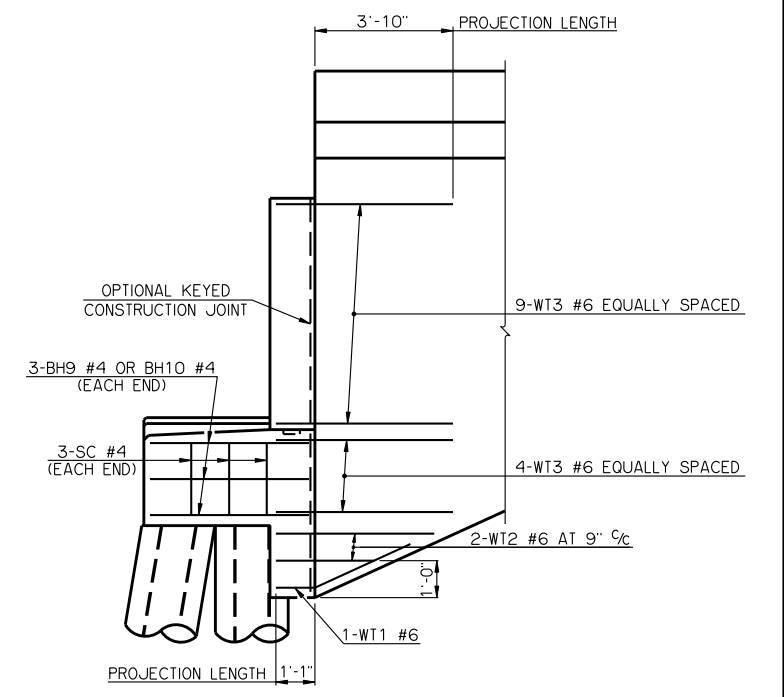
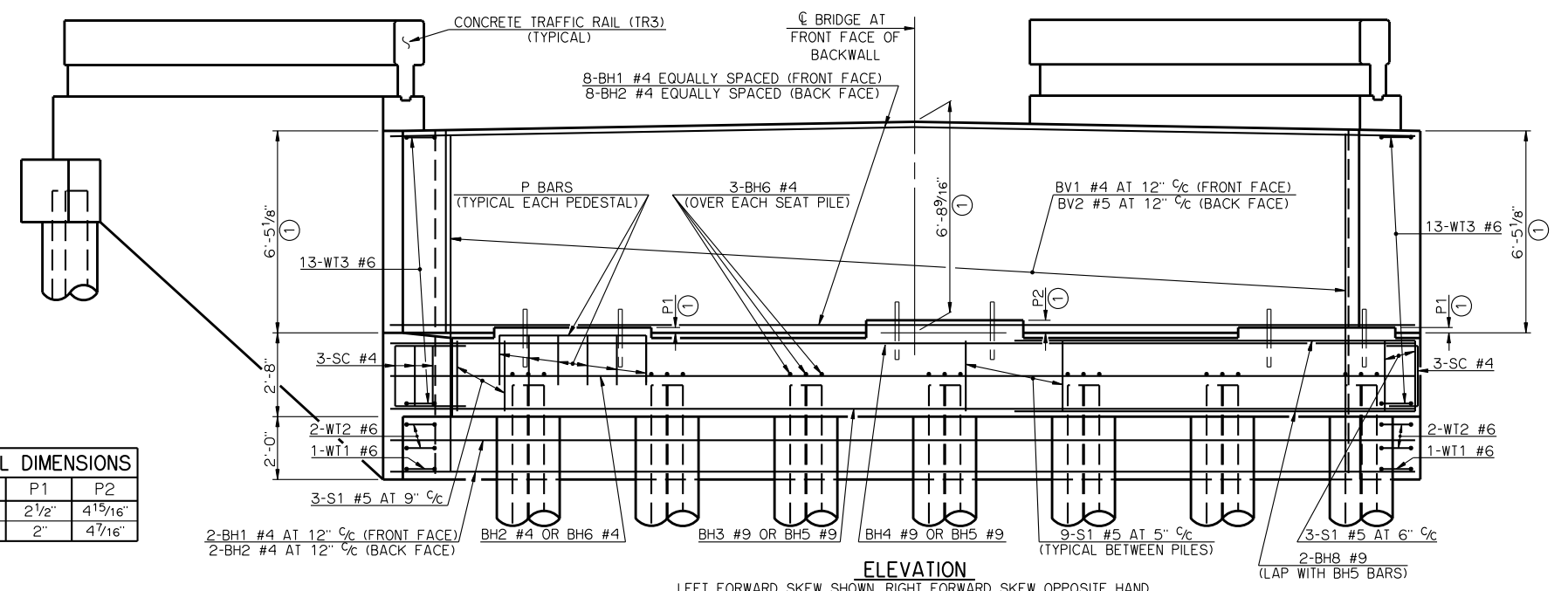


PILE SCHEDULE	
SPAN	MAXIMUM FACTORED PILE LOAD
110'	82.0 TON
115'	84.0 TON
120'	86.0 TON
125'	88.0 TON
130'	89.9 TON
135'	91.9 TON



SIDE VIEW

PLAN  
LEFT FORWARD SKEW SHOWN, RIGHT FORWARD SKEW OPPOSITE HAND



ELEVATION  
LEFT FORWARD SKEW SHOWN, RIGHT FORWARD SKEW OPPOSITE HAND

SUMMARY OF QUANTITIES - ONE ABUTMENT ③		
ITEM	UNIT	TOTAL
SUBSTRUCTURE EXCAVATION, COMMON	CY	75.00
GRANULAR BACKFILL	CY	69.00
CLASS A CONCRETE	CY	28.60
REINFORCING STEEL	LB	4,100.00
PILES, FURNISHED (HP 12X53)	LF	-
PILES, DRIVEN (HP 12X53)	LF	-
6" PERFORATED PIPE UNDERDRAIN	LF	30.00
6" NON-PERFORATED PIPE UNDERDRAIN	LF	-

③ EXCLUDES WINGS

- ① DIMENSIONS ARE FROM TOP OF BRIDGE SEAT AT FRONT FACE OF BACKWALL.
- ② ALL WT WING REINFORCING STEEL TIED TO THE ABUTMENT BRIDGE SEAT, BACKWALL AND CURTAIN WALL REINFORCING STEEL MUST BE IN PLACE PRIOR TO POURING ABUTMENT CONCRETE. FOR ADDITIONAL INFORMATION SEE WING DETAILS.

PEDESTAL DIMENSIONS		
BEAM TYPE	P1	P2
TYPE BT-72	2 1/2"	4 13/16"
TYPE J	2"	4 7/16"

APPROVED BY BRIDGE ENGINEER *Robert J. Duch* DATE 9-9-2011

OKLAHOMA DEPARTMENT OF TRANSPORTATION  
COUNTY BRIDGE STANDARD (ENGLISH)

**ABUTMENT DETAILS**  
TYPE BT-72 AND TYPE J P.C. BEAMS  
(SHEET NO. 1 OF 2)

26' CLEAR ROADWAY - CONVENTIONAL - SKEWED 30°

2009 SPECIFICATIONS      CB26-C-SK30-ABUT-PC5-1      01E      CB-201E