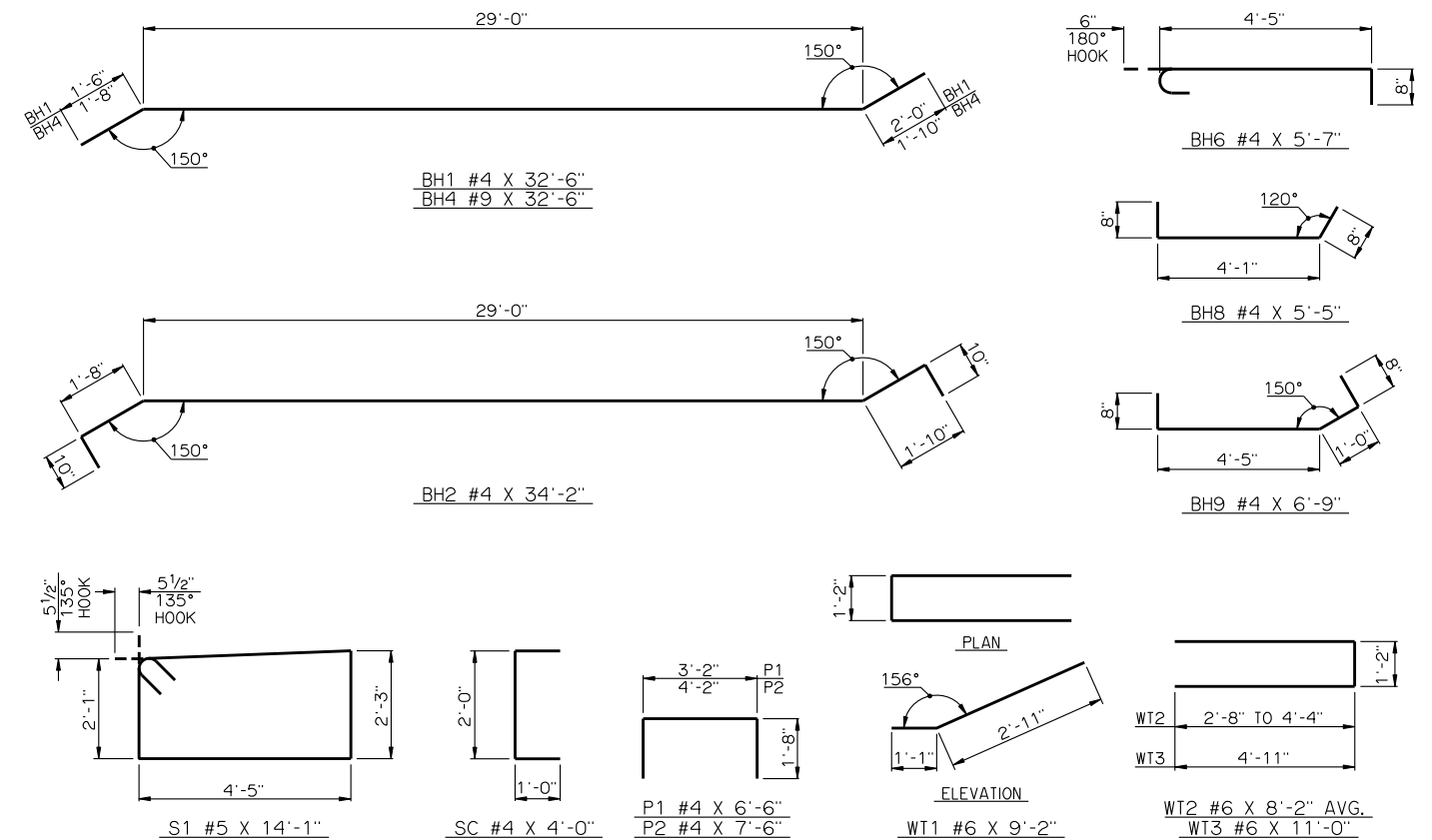
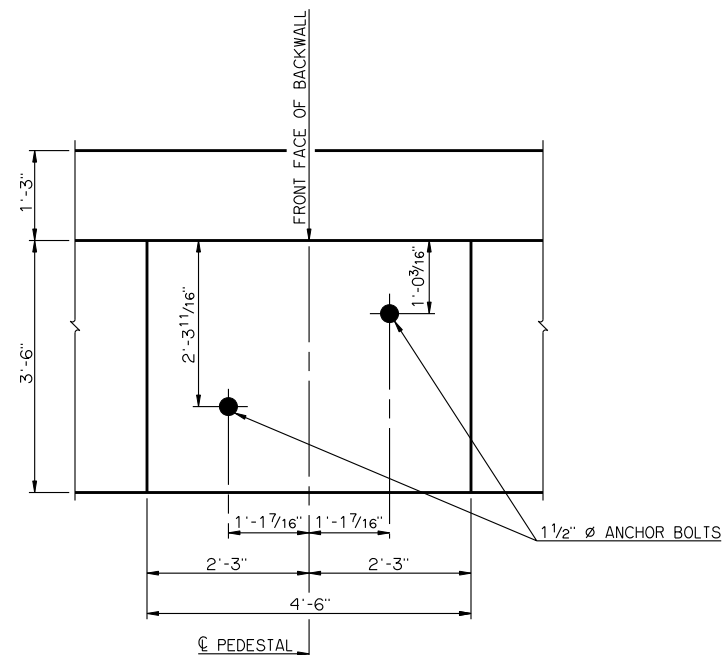


TYPICAL SECTION THRU ABUTMENT



DETAILS OF BENT REINFORCING STEEL



DETAIL OF PEDESTAL WITH LAYOUT OF ANCHOR BOLTS

BAR LIST - ONE ABUTMENT					
MARK	NO.	SIZE	FORM	LENGTH	LENGTH VARIATION
BH1	8	#4	BNT.	32'-6"	-
BH2	9	#4	BNT.	34'-2"	-
① BH3	8	#9	STR.	31'-6" AVG.	30'-7" TO 32'-5"
BH4	2	#9	BNT.	32'-6"	-
BH5	1	#4	STR.	30'-7"	-
BH6	21	#4	BNT.	5'-7"	-
BH7	2	#9	STR.	12'-9"	-
BH8	3	#4	BNT.	5'-5"	-
BH9	3	#4	BNT.	6'-9"	-
② BV1	30	#4	STR.	9'-2" AVG.	9'-0" TO 9'-4"
② BV2	30	#5	STR.	9'-2" AVG.	9'-0" TO 9'-4"
BV3	8	#6	STR.	9'-0"	-
P1	18	#4	BNT.	6'-6"	-
P2	12	#4	BNT.	7'-6"	-
S1	36	#5	BNT.	14'-1"	-
SC	6	#4	BNT.	4'-0"	-
WT1	2	#6	BNT.	9'-2"	-
③ WT2	4	#6	BNT.	8'-2" AVG.	6'-6" TO 9'-10"
WT3	22	#6	BNT.	11'-0"	-

- ① NO. INCLUDES TWO SETS OF 4 BARS
- ② NO. INCLUDES TWO SETS OF 15 BARS
- ③ NO. INCLUDES TWO SETS OF 2 BARS

APPROVED BY BRIDGE ENGINEER *Robert J. Hush* DATE 10-31-2011

OKLAHOMA DEPARTMENT OF TRANSPORTATION
COUNTY BRIDGE STANDARD (ENGLISH)

ABUTMENT DETAILS
TYPE IV P.C. BEAMS
(SHEET NO. 2 OF 2)

26' CLEAR ROADWAY - CONVENTIONAL - SKEWED 30°

2009 SPECIFICATIONS CB26-C-SK30-ABUT-PC4-2 02E CB-200E