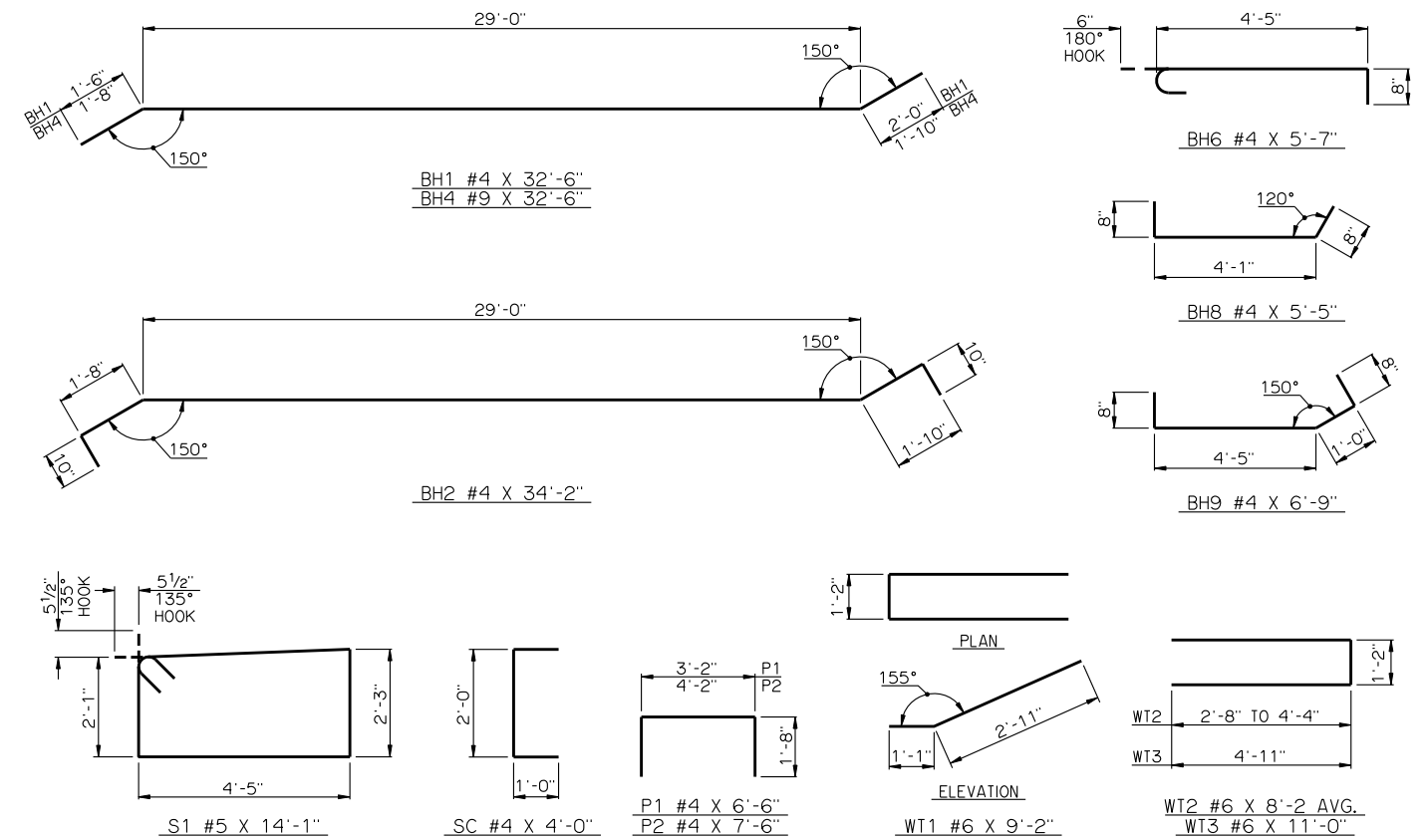
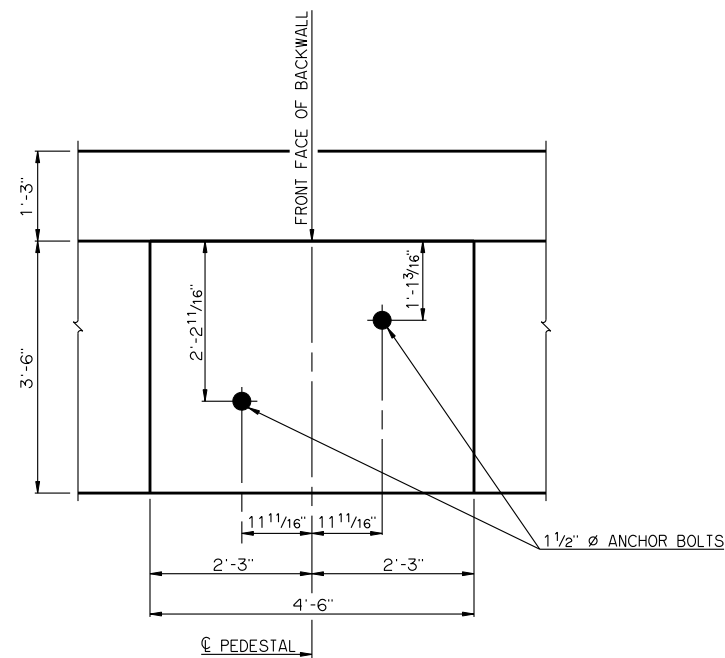


TYPICAL SECTION THRU ABUTMENT



DETAILS OF BENT REINFORCING STEEL



DETAIL OF PEDESTAL WITH LAYOUT OF ANCHOR BOLTS

| BAR LIST - ONE ABUTMENT |     |      |      |             |                  |
|-------------------------|-----|------|------|-------------|------------------|
| MARK                    | NO. | SIZE | FORM | LENGTH      | LENGTH VARIATION |
| BH1                     | 7   | #4   | BNT. | 32'-6"      | -                |
| BH2                     | 8   | #4   | BNT. | 34'-2"      | -                |
| ① BH3                   | 8   | #9   | STR. | 31'-6" AVG. | 30'-7" TO 32'-5" |
| BH4                     | 2   | #9   | BNT. | 32'-6"      | -                |
| BH5                     | 1   | #4   | STR. | 30'-7"      | -                |
| BH6                     | 15  | #4   | BNT. | 5'-7"       | -                |
| BH7                     | 2   | #9   | STR. | 12'-9"      | -                |
| BH8                     | 3   | #4   | BNT. | 5'-5"       | -                |
| BH9                     | 3   | #4   | BNT. | 6'-9"       | -                |
| ② BV1                   | 30  | #4   | STR. | 8'-5" AVG.  | 8'-3" TO 8'-7"   |
| ② BV2                   | 30  | #5   | STR. | 8'-5" AVG.  | 8'-3" TO 8'-7"   |
| BV3                     | 8   | #6   | STR. | 8'-3"       | -                |
| P1                      | 18  | #4   | BNT. | 6'-6"       | -                |
| P2                      | 12  | #4   | BNT. | 7'-6"       | -                |
| S1                      | 38  | #5   | BNT. | 14'-1"      | -                |
| SC                      | 6   | #4   | BNT. | 4'-0"       | -                |
| WT1                     | 2   | #6   | BNT. | 9'-2"       | -                |
| ③ WT2                   | 4   | #6   | BNT. | 8'-2" AVG.  | 6'-6" TO 9'-10"  |
| WT3                     | 20  | #6   | BNT. | 11'-0"      | -                |

- ① NO. INCLUDES TWO SETS OF 4 BARS
- ② NO. INCLUDES TWO SETS OF 15 BARS
- ③ NO. INCLUDES TWO SETS OF 2 BARS

APPROVED BY BRIDGE ENGINEER *Robert J. Hush* DATE 10-31-2011

OKLAHOMA DEPARTMENT OF TRANSPORTATION  
 COUNTY BRIDGE STANDARD (ENGLISH)

ABUTMENT DETAILS  
 TYPE III AND TYPE C P.C. BEAMS  
 (SHEET NO. 2 OF 2)

26' CLEAR ROADWAY - CONVENTIONAL - SKEWED 30°

2009 SPECIFICATIONS      CB26-C-SK30-ABUT-PC3-2      02E      CB-198E