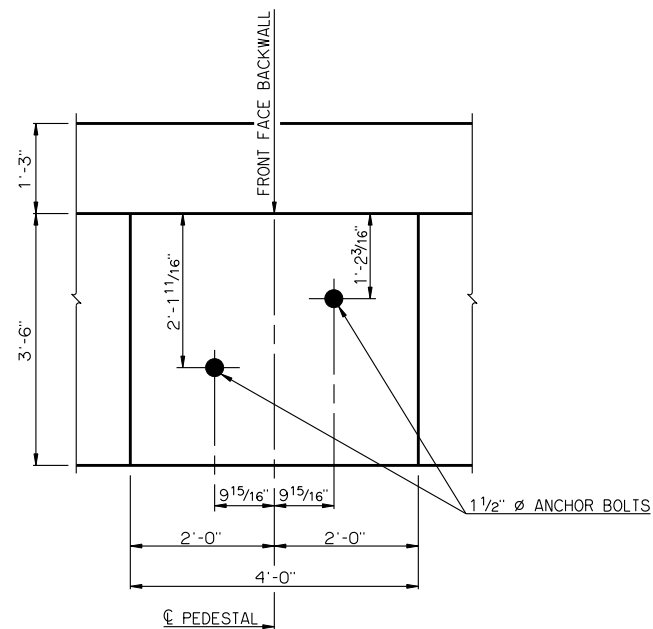
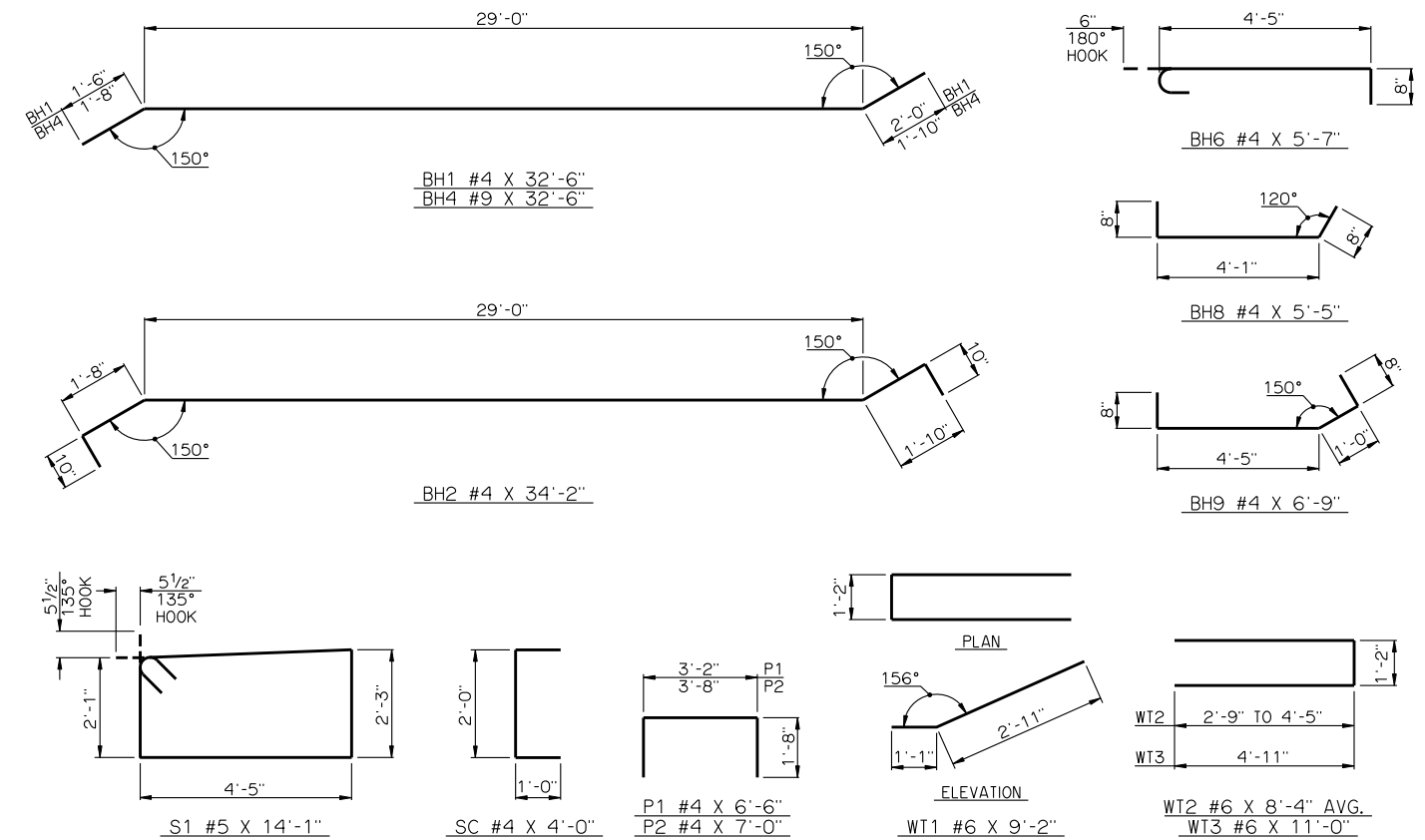


TYPICAL SECTION THRU ABUTMENT



DETAIL OF PEDESTAL WITH LAYOUT OF ANCHOR BOLTS



DETAILS OF BENT REINFORCING STEEL

BAR LIST - ONE ABUTMENT						
MARK	NO.	SIZE	FORM	LENGTH	LENGTH VARIATION	
	BH1	6	#4	BNT.	32'-6"	-
	BH2	7	#4	BNT.	34'-2"	-
①	BH3	8	#9	STR.	31'-6" AVG.	30'-7" TO 32'-5"
	BH4	2	#9	BNT.	32'-6"	-
	BH5	1	#4	STR.	30'-7"	-
	BH6	15	#4	BNT.	5'-7"	-
	BH7	2	#9	STR.	12'-9"	-
	BH8	3	#4	BNT.	5'-5"	-
	BH9	3	#4	BNT.	6'-9"	-
②	BV1	30	#4	STR.	7'-8" AVG.	7'-6" TO 7'-10"
②	BV2	30	#5	STR.	7'-8" AVG.	7'-6" TO 7'-10"
	BV3	8	#6	STR.	7'-6"	-
	P1	15	#4	BNT.	6'-6"	-
	P2	12	#4	BNT.	7'-0"	-
	S1	38	#5	BNT.	14'-1"	-
	SC	6	#4	BNT.	4'-0"	-
③	WT1	2	#6	BNT.	9'-2"	-
③	WT2	4	#6	BNT.	8'-4" AVG.	6'-8" TO 10'-0"
③	WT3	18	#6	BNT.	11'-0"	-

- ① NO. INCLUDES TWO SETS OF 4 BARS
- ② NO. INCLUDES TWO SETS OF 15 BARS
- ③ NO. INCLUDES TWO SETS OF 2 BARS

APPROVED BY BRIDGE ENGINEER *Robert J. Hush* DATE 10-31-2011

OKLAHOMA DEPARTMENT OF TRANSPORTATION
COUNTY BRIDGE STANDARD (ENGLISH)

ABUTMENT DETAILS
TYPE II AND TYPE B P.C. BEAMS
(SHEET NO. 2 OF 2)

26' CLEAR ROADWAY - CONVENTIONAL - SKEWED 30°

2009 SPECIFICATIONS CB26-C-SK30-ABUT-PC2-2 02E CB-196E