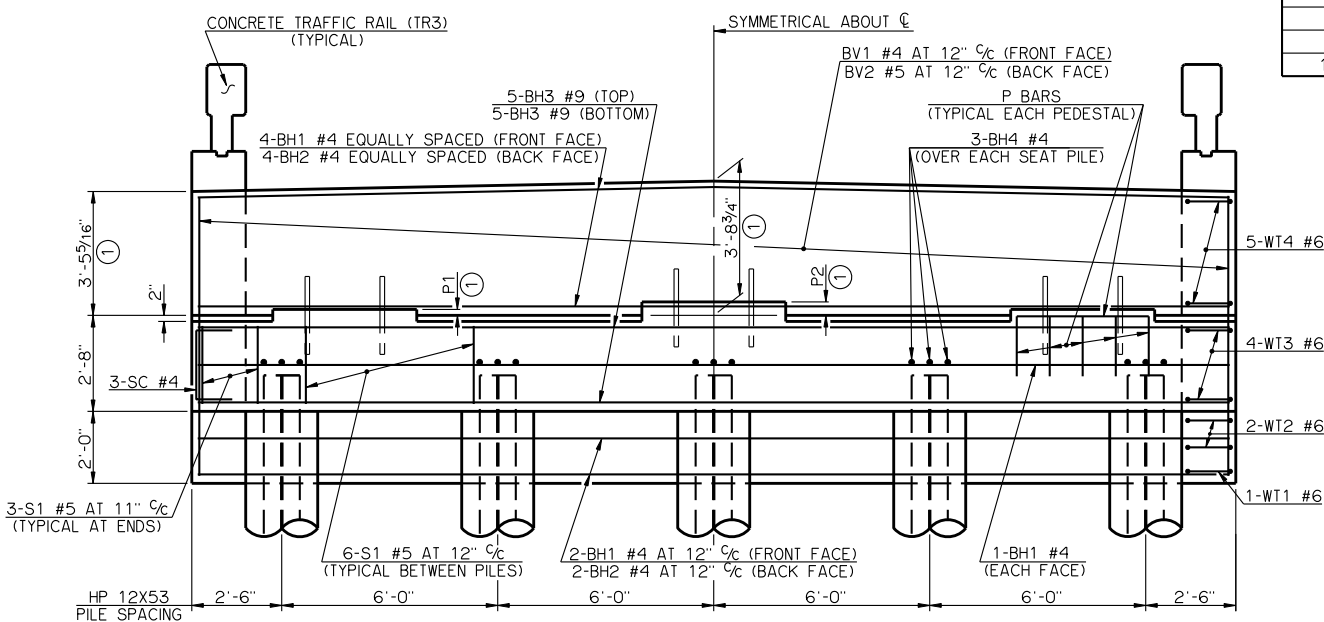


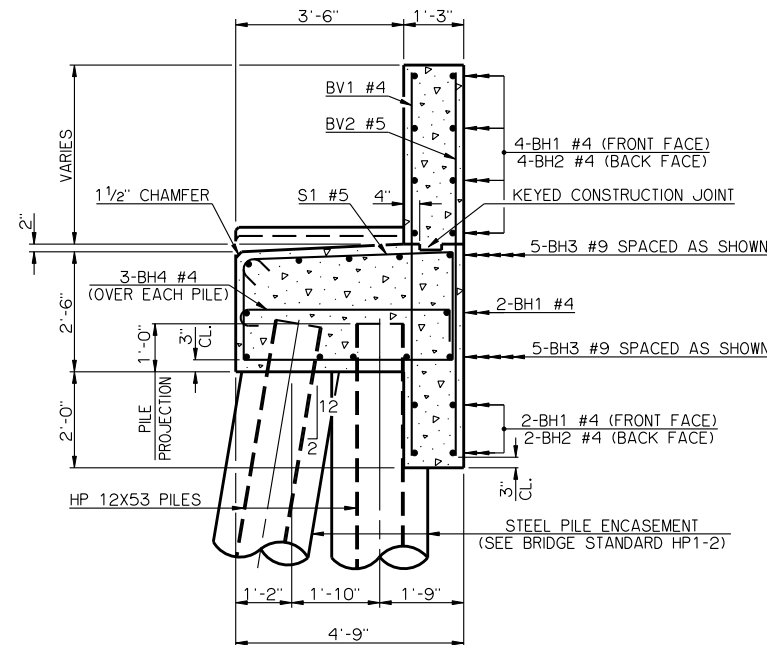
SPAN	MAXIMUM FACTORED PILE LOAD
55'	64.8 TON
60'	67.2 TON
65'	69.6 TON
70'	71.9 TON
75'	74.6 TON
80'	77.0 TON
85'	79.4 TON
90'	82.1 TON
95'	84.8 TON
100'	87.0 TON

PLAN

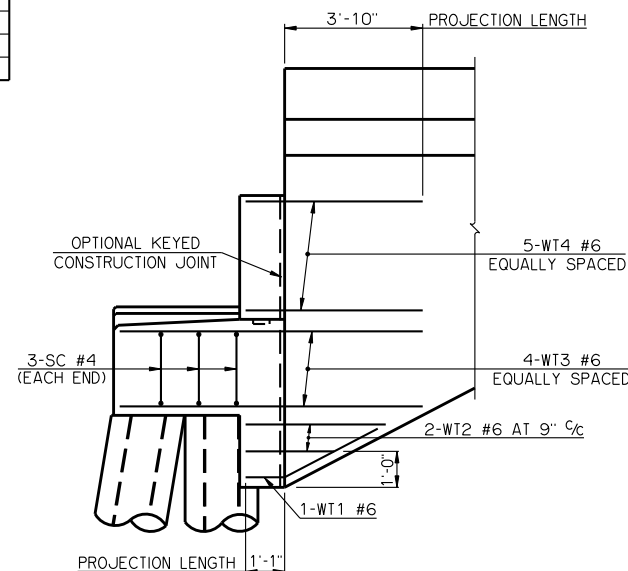
PEDESTAL DIMENSIONS		
SPAN	P1	P2
55'	8 5/16"	10 13/16"
60'	5 5/8"	8 1/8"
65'	5 5/16"	7 13/16"
70'	5 3/16"	7 5/8"
75'	2 3/16"	4 11/16"
80'	3"	5 1/2"
85'	2 1 1/16"	5 3/16"
90'	2 5/16"	4 3/4"
95'	2"	4 7/16"
100'	2"	4 7/16"



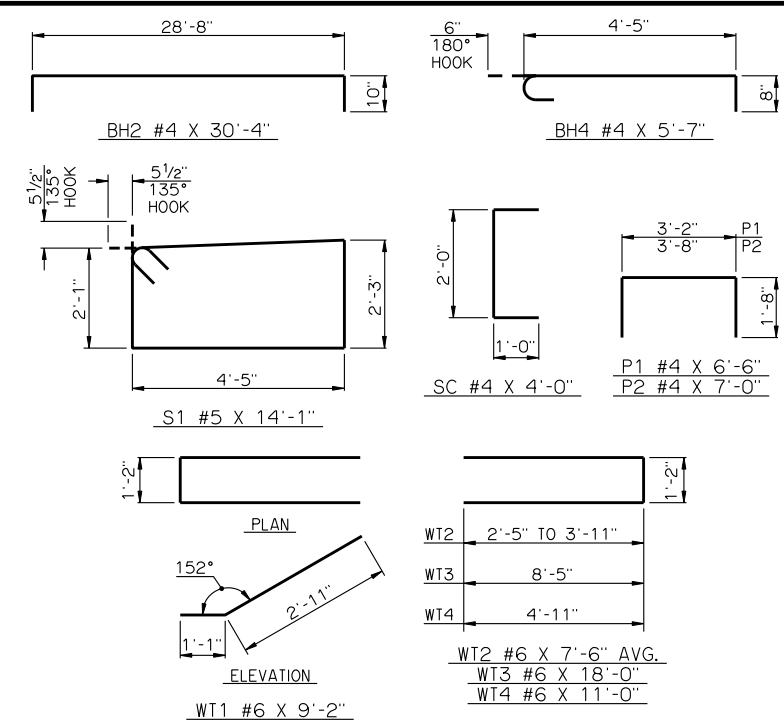
ELEVATION



TYPICAL SECTION THRU ABUTMENT



SIDE VIEW



DETAILS OF BENT REINFORCING STEEL

BAR LIST - ONE ABUTMENT

MARK	NO.	SIZE	FORM	LENGTH	LENGTH VARIATION
BH1	8	#4	STR.	28'-8"	-
BH2	6	#4	BNT.	30'-4"	-
BH3	10	#9	STR.	28'-8"	-
BH4	15	#4	BNT.	5'-7"	-
BV1	30	#4	STR.	7'-10" AVG.	7'-8" TO 8'-0"
BV2	30	#5	STR.	7'-10" AVG.	7'-8" TO 8'-0"
P1	15	#4	BNT.	6'-6"	-
P2	12	#4	BNT.	7'-0"	-
S1	30	#5	BNT.	14'-1"	-
SC	6	#4	BNT.	4'-0"	-
WT1	2	#6	BNT.	9'-2"	-
WT2	4	#6	BNT.	7'-6" AVG.	6'-0" TO 9'-0"
WT3	8	#6	BNT.	18'-0"	-
WT4	10	#6	BNT.	11'-0"	-

- ③ NO. INCLUDES TWO SETS OF 15 BARS
- ④ NO. INCLUDES TWO SETS OF 2 BARS

SUMMARY OF QUANTITIES - ONE ABUTMENT ⑤

ITEM	UNIT	TOTAL
SUBSTRUCTURE EXCAVATION, COMMON	CY	60.00
GRANULAR BACKFILL	CY	32.00
CLASS A CONCRETE	CY	22.20
REINFORCING STEEL	LB	2,740.00
PILES, FURNISHED (HP 12X53)	LF	-
PILES, DRIVEN (HP 12X53)	LF	-
6" PERFORATED PIPE UNDERDRAIN	LF	26.00
6" NON-PERFORATED PIPE UNDERDRAIN	LF	-

- ⑤ EXCLUDES WINGS

- ① DIMENSIONS ARE FROM TOP OF BRIDGE SEAT AT FRONT FACE OF BACKWALL.
- ② ALL WT WING REINFORCING STEEL TIED TO THE ABUTMENT BRIDGE SEAT, BACKWALL AND CURTAIN WALL REINFORCING STEEL MUST BE IN PLACE PRIOR TO POURING ABUTMENT CONCRETE. FOR ADDITIONAL INFORMATION SEE WING DETAILS.

APPROVED BY BRIDGE ENGINEER *Robert J. Hush* DATE 10-31-2011

OKLAHOMA DEPARTMENT OF TRANSPORTATION
COUNTY BRIDGE STANDARD (ENGLISH)

ABUTMENT DETAILS
55' THRU 100' ROLLED BEAMS

26' CLEAR ROADWAY - CONVENTIONAL - SKEWED 0°

2009 SPECIFICATIONS CB26-C-SKO-ABUT-RB-55100 02E
CB-155E