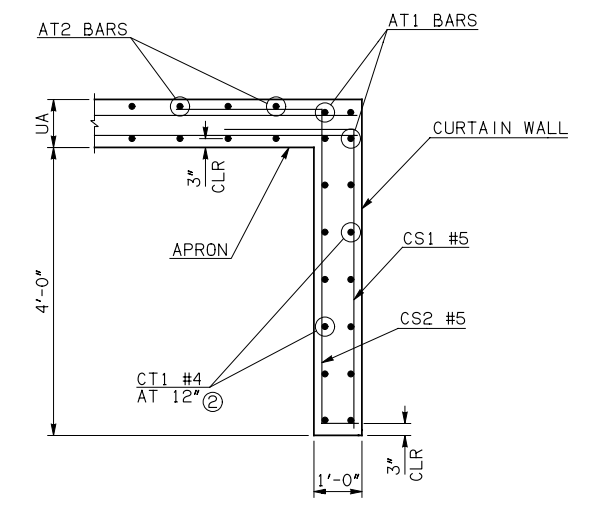


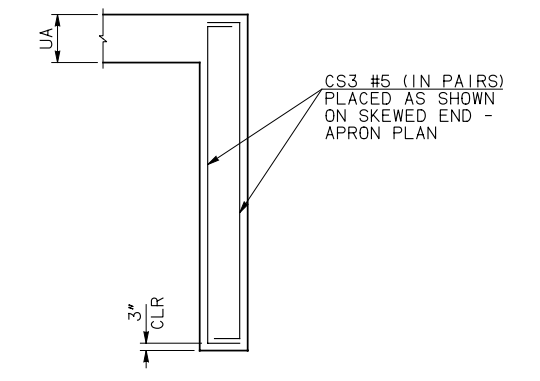
SECTION DIMENSIONS ①			REINFORCING STEEL									
S	H	UA	CS1-#5 AT 12" MAX		CS2-#5 AT 12" MAX		CS3-#5 BARS		CT1-#4 AT 12"			
			QTY	LENGTH	QTY	"M"	LENGTH	QTY	"M"	LENGTH	QTY	LENGTH
4'	3'	8"	40	5'-9"	40	4'-3"	6'-8"	4	4'-3"	5'-7"	8	39'-10"
4'	4'	10"	45	5'-9"	45	4'-5"	6'-10"	4	4'-5"	5'-9"	8	45'-0"
5'	3'	8"	44	5'-9"	44	4'-3"	6'-8"	4	4'-3"	5'-7"	8	43'-3"
5'	4'	10"	49	5'-9"	49	4'-5"	6'-10"	4	4'-5"	5'-9"	8	48'-6"
5'	5'	10"	55	5'-9"	55	4'-5"	6'-10"	4	4'-5"	5'-9"	8	54'-2"
6'	3'	8"	47	5'-9"	47	4'-3"	6'-8"	4	4'-3"	5'-7"	8	46'-9"
6'	4'	10"	52	5'-9"	52	4'-5"	6'-10"	4	4'-5"	5'-9"	8	51'-11"
6'	5'	10"	58	5'-9"	58	4'-5"	6'-10"	4	4'-5"	5'-9"	8	57'-7"
6'	6'	11"	64	5'-9"	64	4'-6"	6'-11"	4	4'-6"	5'-10"	8	65'-8"
8'	3'	8"	54	5'-9"	54	4'-3"	6'-8"	4	4'-3"	5'-7"	8	53'-8"
8'	4'	10"	59	5'-9"	59	4'-5"	6'-10"	4	4'-5"	5'-9"	8	58'-10"
8'	5'	10"	65	5'-9"	65	4'-5"	6'-10"	4	4'-5"	5'-9"	8	67'-1"
8'	6'	11"	71	5'-9"	71	4'-6"	6'-11"	4	4'-6"	5'-10"	8	72'-8"
8'	7'	11"	76	5'-9"	76	4'-6"	6'-11"	4	4'-6"	5'-10"	8	77'-10"
8'	8'	12"	81	5'-9"	81	4'-7"	7'-0"	4	4'-7"	5'-11"	8	83'-0"
10'	3'	8"	61	5'-9"	61	4'-3"	6'-8"	4	4'-3"	5'-7"	8	63'-1"
10'	4'	10"	66	5'-9"	66	4'-5"	6'-10"	4	4'-5"	5'-9"	8	68'-3"
10'	5'	10"	72	5'-9"	72	4'-5"	6'-10"	4	4'-5"	5'-9"	8	74'-0"
10'	6'	11"	77	5'-9"	77	4'-6"	6'-11"	4	4'-6"	5'-10"	8	79'-7"
10'	7'	11"	83	5'-9"	83	4'-6"	6'-11"	4	4'-6"	5'-10"	8	84'-9"
10'	8'	12"	88	5'-9"	88	4'-7"	7'-0"	4	4'-7"	5'-11"	8	89'-11"
10'	9'	13"	94	5'-9"	94	4'-8"	7'-1"	4	4'-8"	6'-0"	8	95'-8"
10'	10'	13"	99	5'-9"	99	4'-8"	7'-1"	4	4'-8"	6'-0"	8	100'-10"
12'	6'	11"	84	5'-9"	84	4'-6"	6'-11"	4	4'-6"	5'-10"	8	86'-6"
12'	7'	11"	90	5'-9"	90	4'-6"	6'-11"	4	4'-6"	5'-10"	8	91'-8"
12'	8'	12"	95	5'-9"	95	4'-7"	7'-0"	4	4'-7"	5'-11"	8	96'-11"
12'	9'	13"	101	5'-9"	101	4'-8"	7'-1"	4	4'-8"	6'-0"	8	102'-7"
12'	10'	13"	106	5'-9"	106	4'-8"	7'-1"	4	4'-8"	6'-0"	8	107'-9"
12'	11'	14"	111	5'-9"	111	4'-9"	7'-2"	4	4'-9"	6'-1"	8	113'-0"
12'	12'	14"	116	5'-9"	116	4'-9"	7'-2"	4	4'-9"	6'-1"	8	118'-2"
14'	7'	11"	97	5'-9"	97	4'-6"	6'-11"	4	4'-6"	5'-10"	8	98'-7"
14'	8'	12"	102	5'-9"	102	4'-7"	7'-0"	4	4'-7"	5'-11"	8	103'-10"
14'	9'	13"	107	5'-9"	107	4'-8"	7'-1"	4	4'-8"	6'-0"	8	109'-6"
14'	10'	13"	113	5'-9"	113	4'-8"	7'-1"	4	4'-8"	6'-0"	8	114'-8"
14'	11'	14"	118	5'-9"	118	4'-9"	7'-2"	4	4'-9"	6'-1"	8	119'-11"
14'	12'	14"	123	5'-9"	123	4'-9"	7'-2"	4	4'-9"	6'-1"	8	127'-7"
16'	8'	12"	109	5'-9"	109	4'-7"	7'-0"	4	4'-7"	5'-11"	8	110'-9"
16'	9'	13"	114	5'-9"	114	4'-8"	7'-1"	4	4'-8"	6'-0"	8	116'-5"
16'	10'	13"	120	5'-9"	120	4'-8"	7'-1"	4	4'-8"	6'-0"	8	124'-2"
16'	11'	14"	125	5'-9"	125	4'-9"	7'-2"	4	4'-9"	6'-1"	8	129'-4"
16'	12'	14"	130	5'-9"	130	4'-9"	7'-2"	4	4'-9"	6'-1"	8	134'-6"
16'	15'	16"	146	5'-9"	146	4'-11"	7'-4"	4	4'-11"	6'-3"	8	150'-10"
18'	9'	13"	121	5'-9"	121	4'-8"	7'-1"	4	4'-8"	6'-0"	8	125'-10"
18'	10'	13"	126	5'-9"	126	4'-8"	7'-1"	4	4'-8"	6'-0"	8	131'-1"
18'	11'	14"	132	5'-9"	132	4'-9"	7'-2"	4	4'-9"	6'-1"	8	136'-3"
18'	12'	14"	137	5'-9"	137	4'-9"	7'-2"	4	4'-9"	6'-1"	8	141'-5"
18'	15'	16"	153	5'-9"	153	4'-11"	7'-4"	4	4'-11"	6'-3"	8	157'-9"
20'	10'	13"	133	5'-9"	133	4'-8"	7'-1"	4	4'-8"	6'-0"	8	138'-0"
20'	11'	14"	139	5'-9"	139	4'-9"	7'-2"	4	4'-9"	6'-1"	8	143'-2"
20'	12'	14"	144	5'-9"	144	4'-9"	7'-2"	4	4'-9"	6'-1"	8	148'-4"
20'	15'	16"	160	5'-9"	160	4'-11"	7'-4"	4	4'-11"	6'-3"	8	164'-9"

QUANTITIES	
CONC. (C.Y.)	REINF. (L.B.)
6.00	760.00
6.80	860.00
6.50	830.00
7.30	930.00
8.10	1040.00
7.00	890.00
7.80	990.00
8.60	1100.00
9.50	1230.00
8.10	1010.00
8.80	1120.00
9.70	1240.00
10.50	1360.00
11.30	1450.00
12.00	1550.00
9.10	1160.00
9.80	1260.00
10.70	1370.00
11.50	1470.00
12.30	1580.00
13.10	1680.00
13.90	1800.00
14.70	1890.00
12.50	1600.00
13.30	1710.00
14.10	1810.00
14.90	1930.00
15.70	2020.00
16.50	2130.00
17.20	2220.00
14.30	1840.00
15.10	1940.00
16.00	2050.00
16.70	2160.00
17.50	2260.00
18.30	2370.00
16.10	2070.00
17.00	2180.00
17.80	2300.00
18.50	2410.00
19.30	2500.00
21.70	2830.00
18.00	2320.00
18.80	2420.00
19.50	2540.00
20.30	2630.00
22.70	2960.00
19.80	2550.00
20.60	2670.00
21.30	2760.00
23.80	3090.00

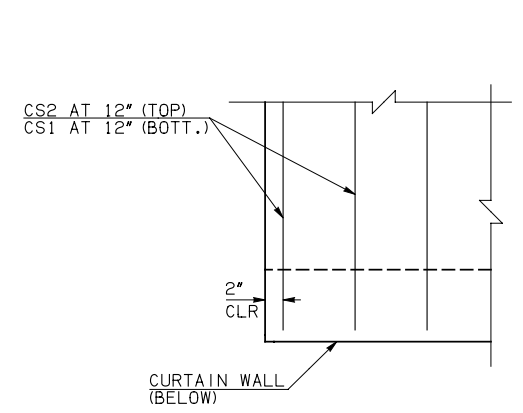


CURTAIN WALL DETAIL

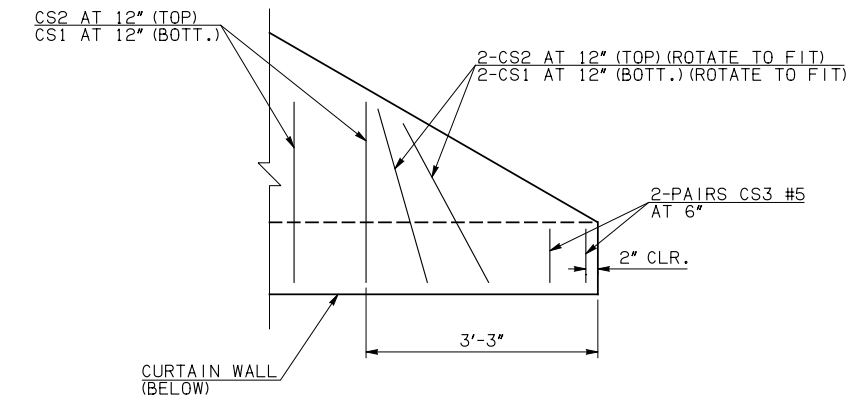
- NOTE: ① SEE RCB CULVERTS - BARREL DETAILS FOR ADDITIONAL INFORMATION
 ② NUMBER & SPACING OF CT1 BARS SHOWN IN DETAIL MAY NOT BE REPRESENTATIVE OF ACTUAL CURTAIN WALL SECTION. SEE SCHEDULE FOR NUMBER AND SPACING OF CT1 BARS.
 ③ INCLUDES 2'-6" LAP
 ④ INCLUDES TWO 2'-6" LAPS



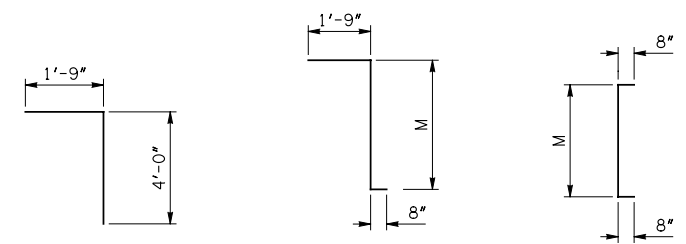
CURTAIN WALL END DETAIL



CURTAIN WALL AT STRAIGHT END-APRON PLAN



CURTAIN WALL AT SKEWED END-APRON PLAN



CS1 #5 x 5'-9" CS2 #5 CS3 #5

APPROVED BY BRIDGE ENGINEER *Debra J. Nuss* DATE 4/09/09

OKLAHOMA DEPT. OF TRANSPORTATION
 BRIDGE STANDARD (ENGLISH)
 RCB CULVERTS - CURTAIN WALL DETAILS
 TRIPLE CELL - 4'-0" DEPTH - 30°

1999 SPECIFICATIONS RCB-CW3-D4-30 00E
 B-830E