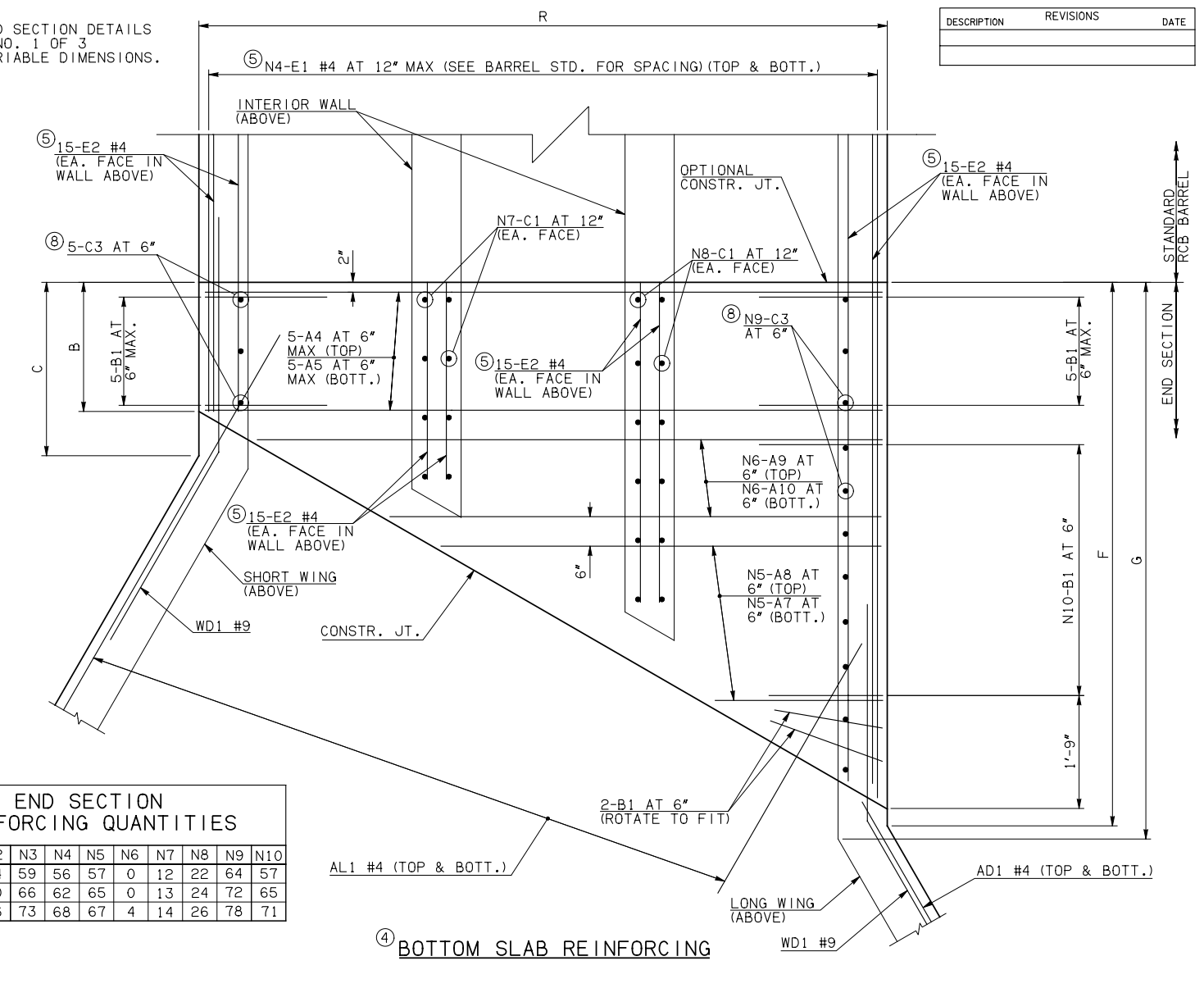
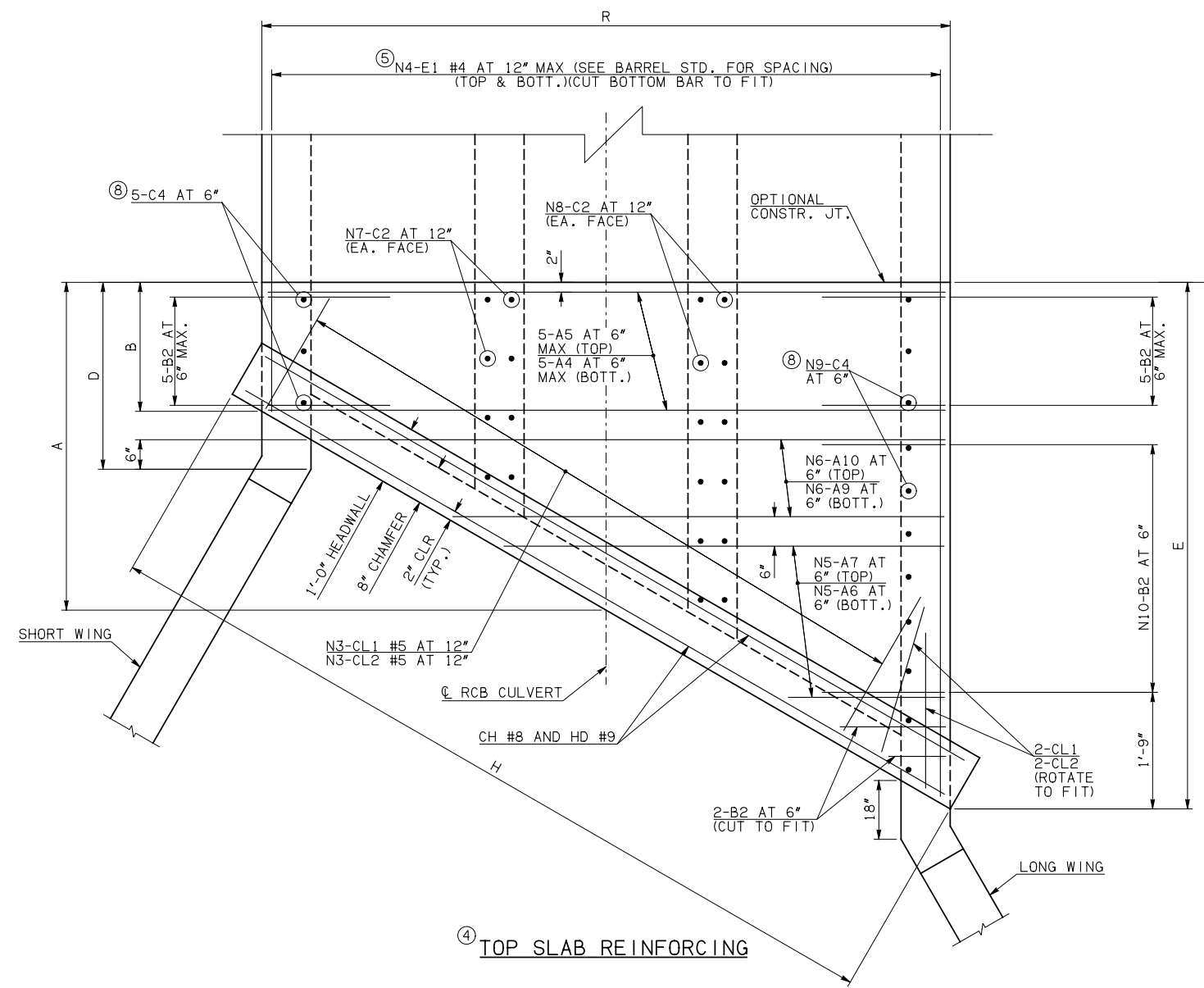


NOTE: SEE END SECTION DETAILS SHEET NO. 1 OF 3 FOR VARIABLE DIMENSIONS.

DESCRIPTION	REVISIONS	DATE



**END SECTION REINFORCING QUANTITIES**

SPAN	N1	N2	N3	N4	N5	N6	N7	N8	N9	N10
16'	16	34	59	56	57	0	12	22	64	57
18'	20	30	66	62	65	0	13	24	72	65
20'	24	26	73	68	67	4	14	26	78	71

**END CONNECTION BAR LIST**  
(VARIABLE QUANTITIES AND LENGTHS)

MARK	FORM	16' SPAN			18' SPAN			20' SPAN								
		SIZE	QTY.	LENGTH	REMARKS	SIZE	QTY.	LENGTH	REMARKS	SIZE	QTY.	LENGTH	REMARKS			
A4	STR	#7	10	51'-10"	#8	10	58'-2"	#8	10	70'-0" (9)						
A5	STR	#8	10	51'-10"	#9	10	58'-2"	#9	10	70'-0" (9)						
A6	STR	#8	57	25'-7" AVG.	#9	65	29'-0 1/2" AVG.	1'-4" TO 49'-10"	#9	67	29'-11" AVG.	1'-4" TO 56'-9"	#10	134	31'-1" AVG.	2'-6" TO 59'-8"
A7	STR	#9	114	26'-9" AVG.	2'-6" TO 51'-0"	#9	130	30'-2 1/2" AVG.	2'-6" TO 57'-11"	#10	134	31'-1" AVG.	2'-6" TO 59'-8"			
A8	STR	#8	57	26'-9" AVG.	2'-6" TO 51'-0"	#9	65	30'-2 1/2" AVG.	2'-6" TO 57'-11"	#9	67	31'-1" AVG.	2'-6" TO 59'-8"			
A9	STR		0			0			#10	8	67'-7 1/2" AVG.	66'-4" TO 68'-11"	(9)			
A10	STR		0			0			#9	8	67'-7 1/2" AVG.	66'-4" TO 68'-11"	(9)			
B1	BNT	#7	69	7'-0"	#7	77	7'-5"	#7	83	7'-7"						
B2	BNT	#7	69	19'-2"	#7	77	19'-7"	#7	83	19'-9"						
C1	STR	#4	68	2'-5"	#4	74	2'-8"	#4	80	2'-8"						
C2	STR	#4	68	16'-1"	#4	74	16'-4"	#4	80	16'-4"						
C3	STR	#5	69	2'-9"	#5	77	3'-0"	#5	83	3'-0"						
C4	STR	#5	69	16'-1"	#5	77	16'-4"	#5	83	16'-4"						
E1	STR	#4	224	17'-9 1/2" AVG.	2'-10" TO 32'-9"	#4	248	18'-9 1/2" AVG.	2'-0" TO 35'-7"	#4	272	20'-9" AVG.	2'-3" TO 39'-3"			
E2	STR	#4	120	17'-2 1/2" AVG.	2'-10", 11'-11", 21'-9", 32'-4"	#4	120	18'-2" AVG.	2'-0", 12'-4", 23'-3", 35'-0"	#4	120	20'-2" AVG.	2'-3", 13'-9", 25'-10", 38'-9"			

- NOTES: (3) QUANTITY SHOWN REPRESENTS TWO SETS.  
 (4) FOR FURTHER INFORMATION REGARDING END SECTION A, B, C, AND E BARS REFER TO RCB CULVERT - BARREL DETAILS.  
 (5) LENGTHS OF E1 & E2 BARS SHOWN ARE ADDITIONAL LENGTHS REQUIRED FOR THE END SECTION. LAP SPLICES, AS REQUIRED, SHALL BE IN ACCORDANCE WITH RCB BARREL STANDARD NOTES.  
 (6) 4-SETS OF N4-E1 BARS REQUIRED  
 (7) 4-SETS OF 30-E2 BARS REQUIRED WITH LENGTHS AS SHOWN CORRESPONDING TO SHORT EXTERIOR WALL, INTERIOR WALLS, AND LONG EXTERIOR WALL.  
 (8) C3 AND C4 BAR SIZE AND SPACING MAY DIFFER FROM BARREL SECTION.  
 (9) INCLUDES 5'-10" LAP.

**QUANTITIES**

ITEM	UNIT	16' SPAN	18' SPAN	20' SPAN
CLASS AA CONCRETE	CY	456.80	516.90	567.30
REINFORCING STEEL	LB	66150.00	78040.00	91010.00

NOTE: QUANTITIES ABOVE ARE FOR ONE END SECTION, WHICH IS COMPRISED OF ONE END CONNECTION, ONE HEADWALL, ONE APRON, AND TWO WINGWALLS.

APPROVED BY BRIDGE ENGINEER *Robert J. Muehl* DATE 4/09/09

**OKLAHOMA DEPT. OF TRANSPORTATION**  
**BRIDGE STANDARD (ENGLISH)**  
 RCB CULVERTS - END SECTION DETAILS  
 TRIPLE CELL - 15'-0" HEIGHT - 30"  
 SHEET NO. 2 OF 3

1999 SPECIFICATIONS | RCB-E3-H15-30-2 | OOE | B-778E