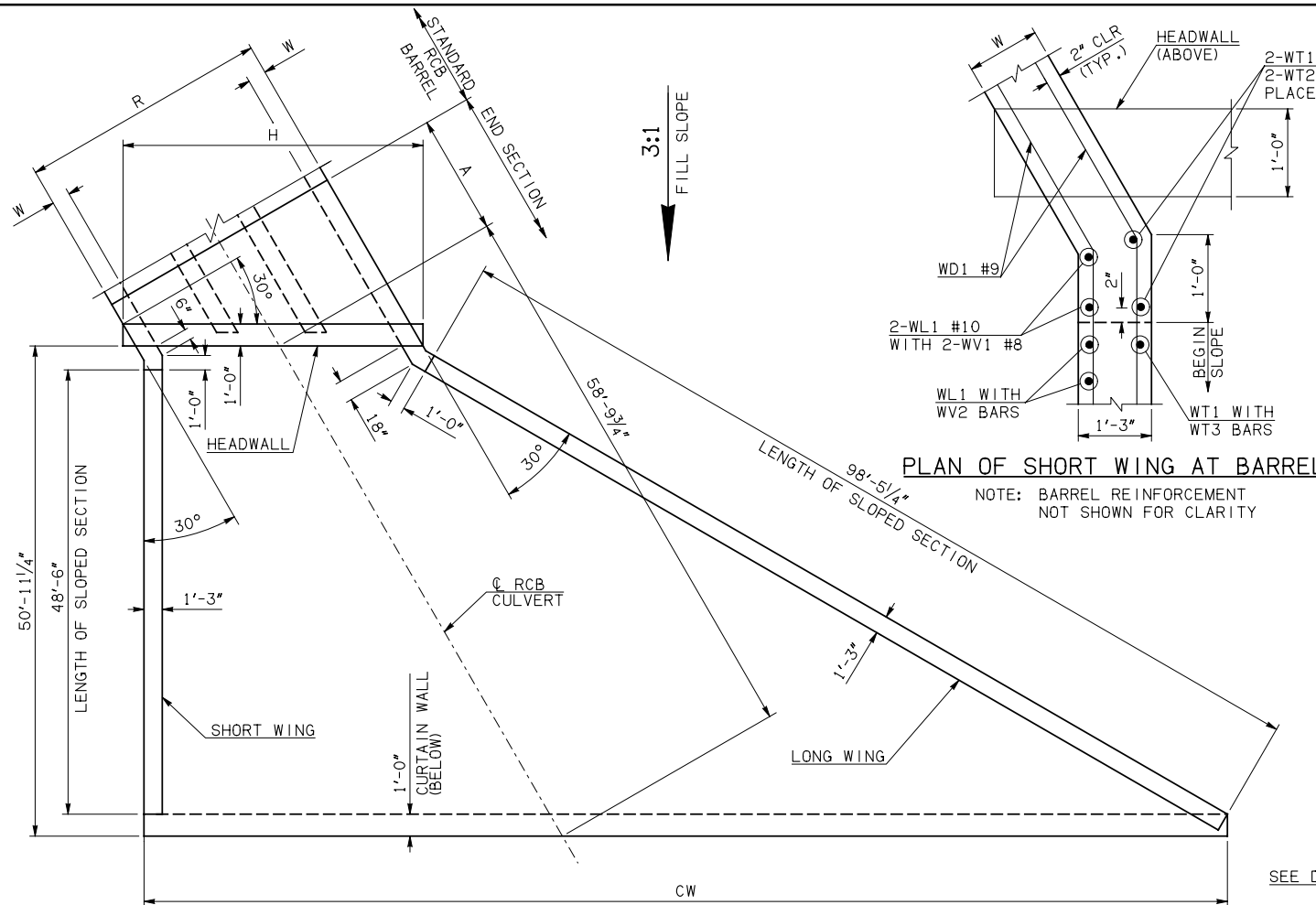
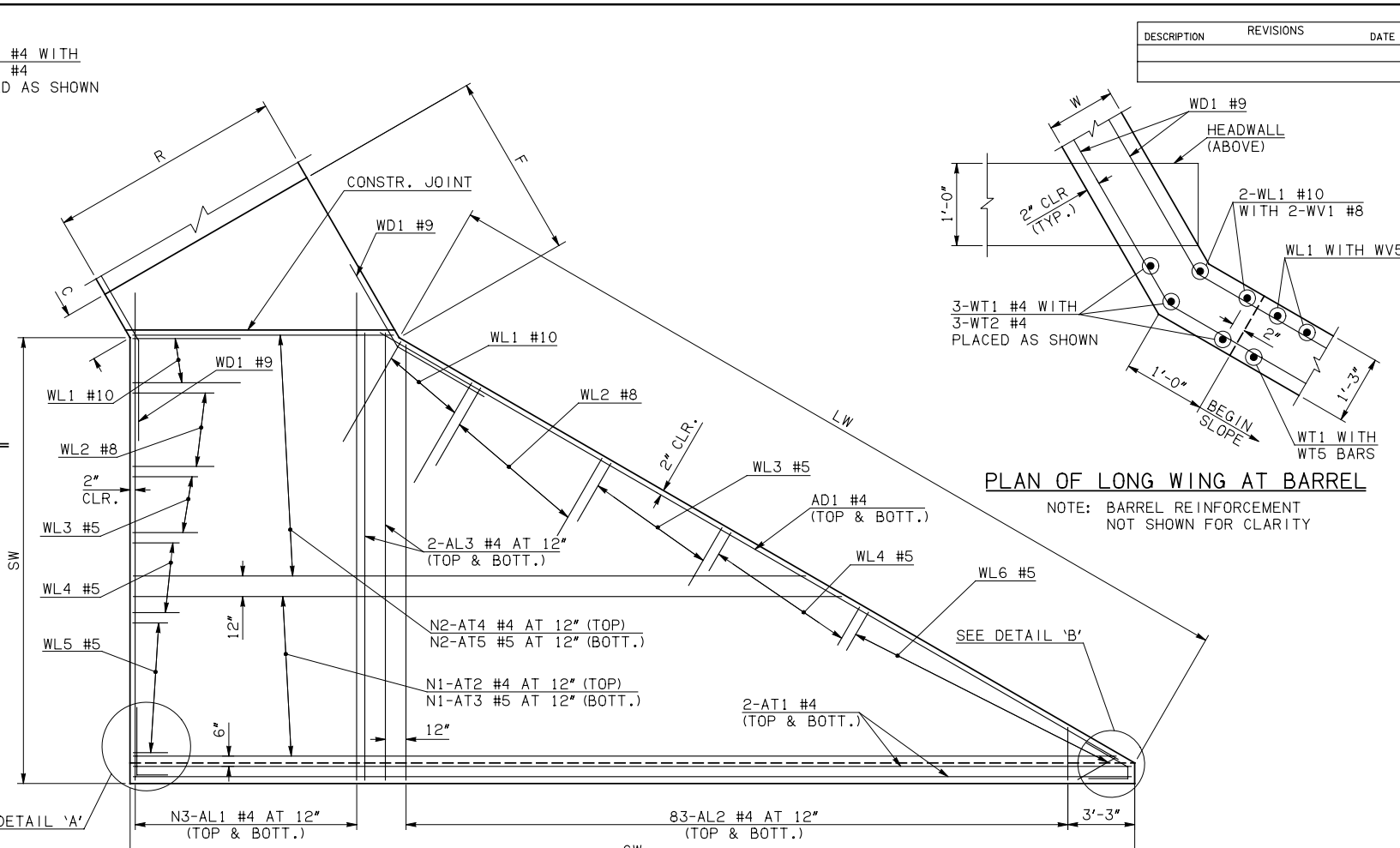


DESCRIPTION	REVISIONS	DATE



PLAN OF SHORT WING AT BARREL
NOTE: BARREL REINFORCEMENT NOT SHOWN FOR CLARITY

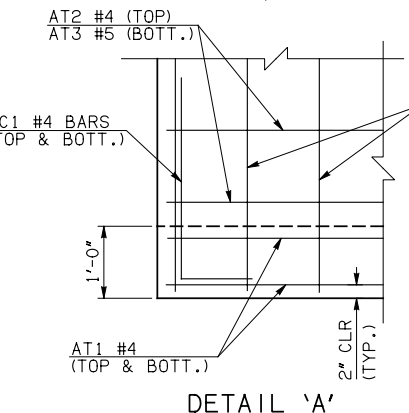


PLAN OF LONG WING AT BARREL
NOTE: BARREL REINFORCEMENT NOT SHOWN FOR CLARITY

END SECTION PLAN

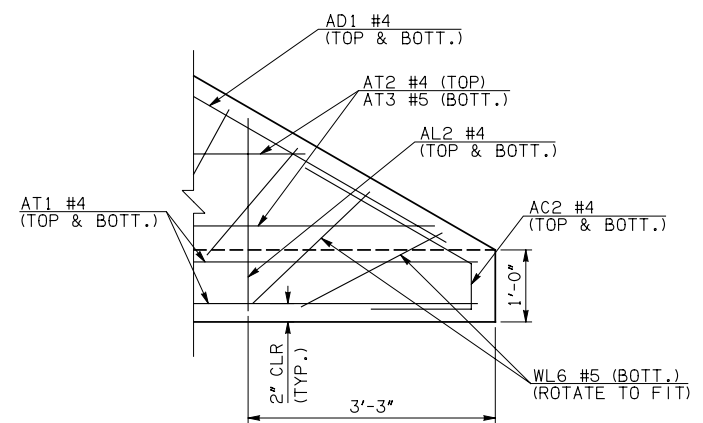
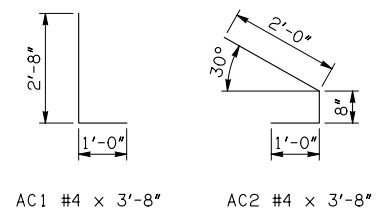
NOTE: SEE END SECTION DETAILS SHEET NO. 2 OF 3 FOR VARIABLE REINFORCING QUANTITIES.

END SECTION VARIABLE DIMENSIONS													
SPAN	W	A	B	C	CW	D	E	F	G	H	LW	R	SW
16'	13"	18'-0"	2'-11 1/4"	3'-5 1/4"	146'-2 3/4"	4'-0 3/4"	33'-0 3/4"	33'-3 3/4"	33'-11 1/4"	60'-9 3/4"	99'-5 1/4"	52'-2"	50'-6"
18'	15"	19'-0"	2'-1 1/4"	3'-0"	153'-1 3/4"	3'-4"	35'-10 3/4"	36'-4"	36'-8"	68'-1 1/2"	99'-1 1/4"	58'-6"	50'-2"
20'	15"	21'-0"	2'-4 1/2"	3'-3 1/4"	160'-1"	3'-7 1/4"	39'-7 1/2"	40'-0 3/4"	40'-4 3/4"	75'-0 3/4"	99'-1 1/4"	64'-6"	50'-2"



DETAIL 'A'

APRON REINFORCING



DETAIL 'B'

- ① INCLUDES 2'-6" LAP
- ② INCLUDES TWO 2'-6" LAPS.
- ③ QUANTITY SHOWN REPRESENTS TWO SETS.
- ⑨ INCLUDES 5'-10" LAP.

APRON AND HEADWALL BAR LIST												
ONE APRON AND ONE HEADWALL SHOWN												
MARK	SIZE	FORM	16' SPAN			18' SPAN			20' SPAN			
			QTY.	LENGTH	REMARKS	QTY.	LENGTH	REMARKS	QTY.	LENGTH	REMARKS	
	AC1	#4	BNT	2	3'-8"		2	3'-8"		2	3'-8"	
	AC2	#4	BNT	2	3'-8"		2	3'-8"		2	3'-8"	
①	AD1	#4	STR	2	102'-0"		2	102'-0"		2	102'-0"	
	AL1	#4	STR	118	52'-9"		132	52'-9"		146	52'-9"	
③	AL2	#4	STR	166	26'-2" AVG.	2'-6" TO 49'-10"	166	26'-2" AVG.	2'-6" TO 49'-10"	166	26'-2" AVG.	2'-6" TO 49'-10"
	AL3	#4	STR	4	50'-9"		4	50'-9"		4	50'-9"	
②	AT1	#4	STR	4	150'-10"		4	157'-9"		4	164'-8"	
②	AT2	#4	STR	16	137'-1" AVG.	124'-1" TO 150'-1"	20	140'-6 1/2" AVG.	124'-1" TO 157'-0"	24	144'-0 1/2" AVG.	124'-1" TO 164'-0"
②	AT3	#5	STR	16	137'-1" AVG.	124'-1" TO 150'-1"	20	140'-6 1/2" AVG.	124'-1" TO 157'-0"	24	144'-0 1/2" AVG.	124'-1" TO 164'-0"
①	AT4	#4	STR	34	91'-4" AVG.	62'-9" TO 119'-11"	30	94'-9 1/2" AVG.	69'-8" TO 119'-11"	26	98'-3" AVG.	76'-7" TO 119'-11"
①	AT5	#5	STR	34	91'-4" AVG.	62'-9" TO 119'-11"	30	94'-9 1/2" AVG.	69'-8" TO 119'-11"	26	98'-3" AVG.	76'-7" TO 119'-11"
①	CH	#8	STR	4	66'-3" ⑨		4	73'-5" ⑨		4	80'-6" ⑨	
	CL1	#5	BNT	61	4'-4"		68	4'-4"		75	4'-4"	
	CL2	#5	BNT	61	4'-3"		68	4'-3"		75	4'-3"	
①	HD	#9	STR	2	66'-3" ⑨		2	73'-5" ⑨		2	80'-6" ⑨	

APPROVED BY BRIDGE ENGINEER *Robert J. Nusch* DATE 4/09/09

OKLAHOMA DEPT. OF TRANSPORTATION
BRIDGE STANDARD ENGLISH
RCB CULVERTS - END SECTION DETAILS
TRIPLE CELL - 15'-0" HEIGHT - 30°
SHEET NO. 1 OF 3

1999 SPECIFICATIONS | RCB-E3-H15-30-1 | OOE | B-777E