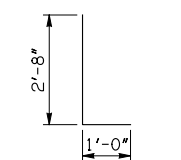


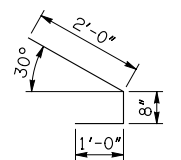
DESCRIPTION	REVISIONS	DATE

APRON BAR LIST

MARK	SIZE	FORM	ONE APRON SHOWN											
			12' SPAN		14' SPAN		16' SPAN		18' SPAN		20' SPAN			
QTY.	LENGTH	REMARKS	QTY.	LENGTH	REMARKS	QTY.	LENGTH	REMARKS	QTY.	LENGTH	REMARKS	QTY.	LENGTH	REMARKS
AC1	#4	BNT	2	3'-8"		2	3'-8"		2	3'-8"		2	3'-8"	
AC2	#4	BNT	2	3'-8"		2	3'-8"		2	3'-8"		2	3'-8"	
AD1	#4	STR	2	84'-0"		2	84'-0"		2	84'-0"		2	84'-0"	
AL1	#4	STR	90	43'-9"		104	43'-9"		118	43'-9"		132	43'-9"	
AL2	#4	STR	134	21'-6 1/2" AVG.	2'-6" TO 40'-7"	134	21'-6 1/2" AVG.	2'-6" TO 40'-7"	134	21'-6 1/2" AVG.	2'-6" TO 40'-7"	134	21'-6 1/2" AVG.	2'-6" TO 40'-7"
AL3	#4	STR	4	41'-9"		4	41'-9"		4	41'-9"		4	41'-9"	
AT1	#4	STR	4	118'-2" ①		4	127'-7" ②		4	134'-6" ②		4	141'-5" ②	
AT2	#4	STR	32	90'-7" AVG. ①	63'-9" TO 117'-5"	3	125'-1" AVG. ②	123'-4" TO 126'-10"	7	128'-6 1/2" AVG. ②	123'-4" TO 133'-9"	11	132'-0" AVG. ②	123'-4" TO 140'-8"
AT3	#5	STR	32	90'-7" AVG. ①	63'-9" TO 117'-5"	3	125'-1" AVG. ②	123'-4" TO 126'-10"	7	128'-6 1/2" AVG. ②	123'-4" TO 133'-9"	11	132'-0" AVG. ②	123'-4" TO 140'-8"
AT4	#4	STR	9	52'-7" AVG.	45'-8" TO 59'-6"	38	87'-1 1/2" AVG. ①	55'-1" TO 119'-2"	34	90'-7" AVG. ①	62'-0" TO 119'-2"	30	94'-0 1/2" AVG. ①	68'-11" TO 119'-2"
AT5	#5	STR	9	52'-7" AVG.	45'-8" TO 59'-6"	38	87'-1 1/2" AVG. ①	55'-1" TO 119'-2"	34	90'-7" AVG. ①	62'-0" TO 119'-2"	30	94'-0 1/2" AVG. ①	68'-11" TO 119'-2"



AC1 #4 x 3'-8"

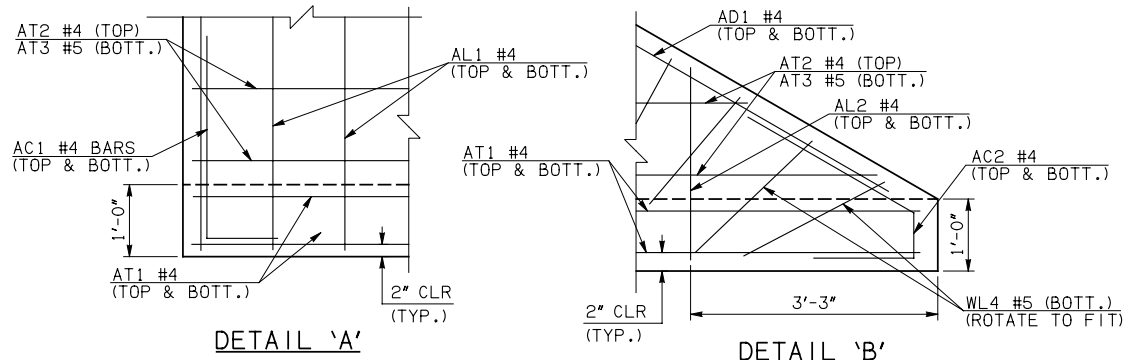


AC2 #4 x 3'-8"

- ① INCLUDES 2'-6" LAP
 - ② INCLUDES TWO 2'-6" LAPS
 - ③ QUANTITY SHOWN REPRESENTS TWO SETS.
- NOTE: SEE END SECTION DETAILS SHEET NO. 2 OF 3 FOR VARIABLE REINFORCING QUANTITIES.

END SECTION VARIABLE DIMENSIONS

SPAN	W	A	B	C	CW	D	E	F	G	H	LW	R	SW
12'	12"	14'-0"	2'-5 1/2"	3'-3 1/4"	116'-0 1/4"	3'-6 1/4"	25'-6 1/2"	26'-2 1/2"	26'-5 3/4"	46'-9 1/4"	80'-8 3/4"	40'-0"	41'-2 3/4"
14'	12"	16'-0"	2'-8 3/4"	3'-6 1/4"	122'-11 1/2"	3'-9 1/2"	29'-3 1/4"	29'-11 1/4"	30'-2 1/2"	53'-8 1/4"	80'-8 3/4"	46'-0"	41'-2 3/4"
16'	13"	18'-0"	2'-11 1/4"	3'-11 1/4"	129'-10 1/2"	4'-0 3/4"	33'-0 3/4"	33'-9 3/4"	33'-11 1/4"	60'-9 3/4"	80'-6 3/4"	52'-2"	41'-0 3/4"
18'	14"	19'-0"	2'-2"	3'-4 1/4"	136'-9 3/4"	3'-4"	35'-10"	36'-8 1/4"	36'-8"	67'-11 1/4"	80'-4 3/4"	58'-4"	40'-10 3/4"
20'	15"	21'-0"	2'-4 1/2"	3'-9 1/4"	143'-8 3/4"	3'-7 1/4"	39'-7 1/2"	40'-6 3/4"	40'-4 3/4"	75'-0 3/4"	80'-2 3/4"	64'-6"	40'-8 3/4"



APPROVED BY BRIDGE ENGINEER *Robert J. Muech* DATE 4/09/09

OKLAHOMA DEPT. OF TRANSPORTATION
BRIDGE STANDARD (ENGLISH)
RCB CULVERTS - END SECTION DETAILS
TRIPLE CELL - 12'-0" HEIGHT - 30°
 SHEET NO. 1 OF 3

1999 SPECIFICATIONS RCB-E3-H12-30-1 OOE B-774E