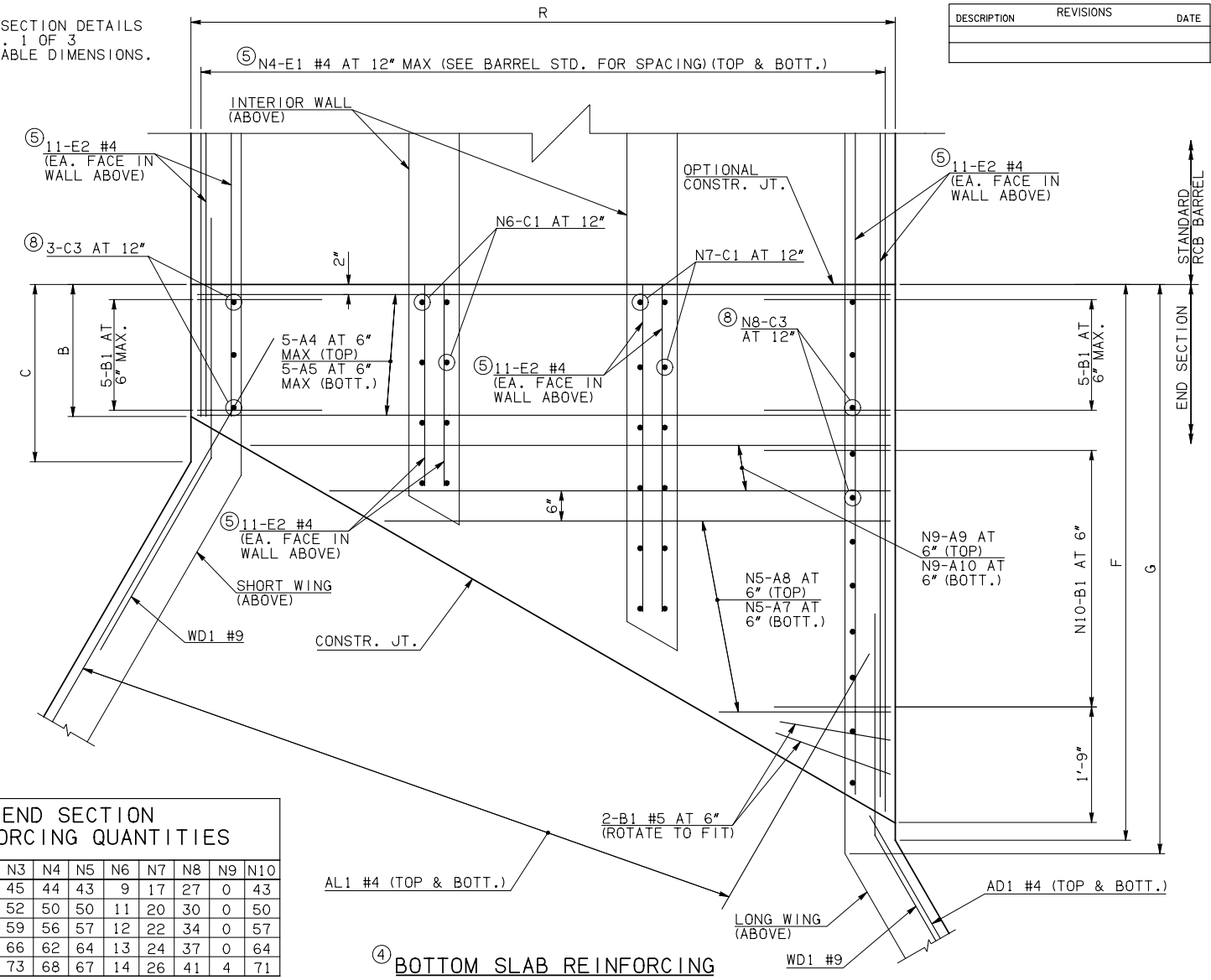
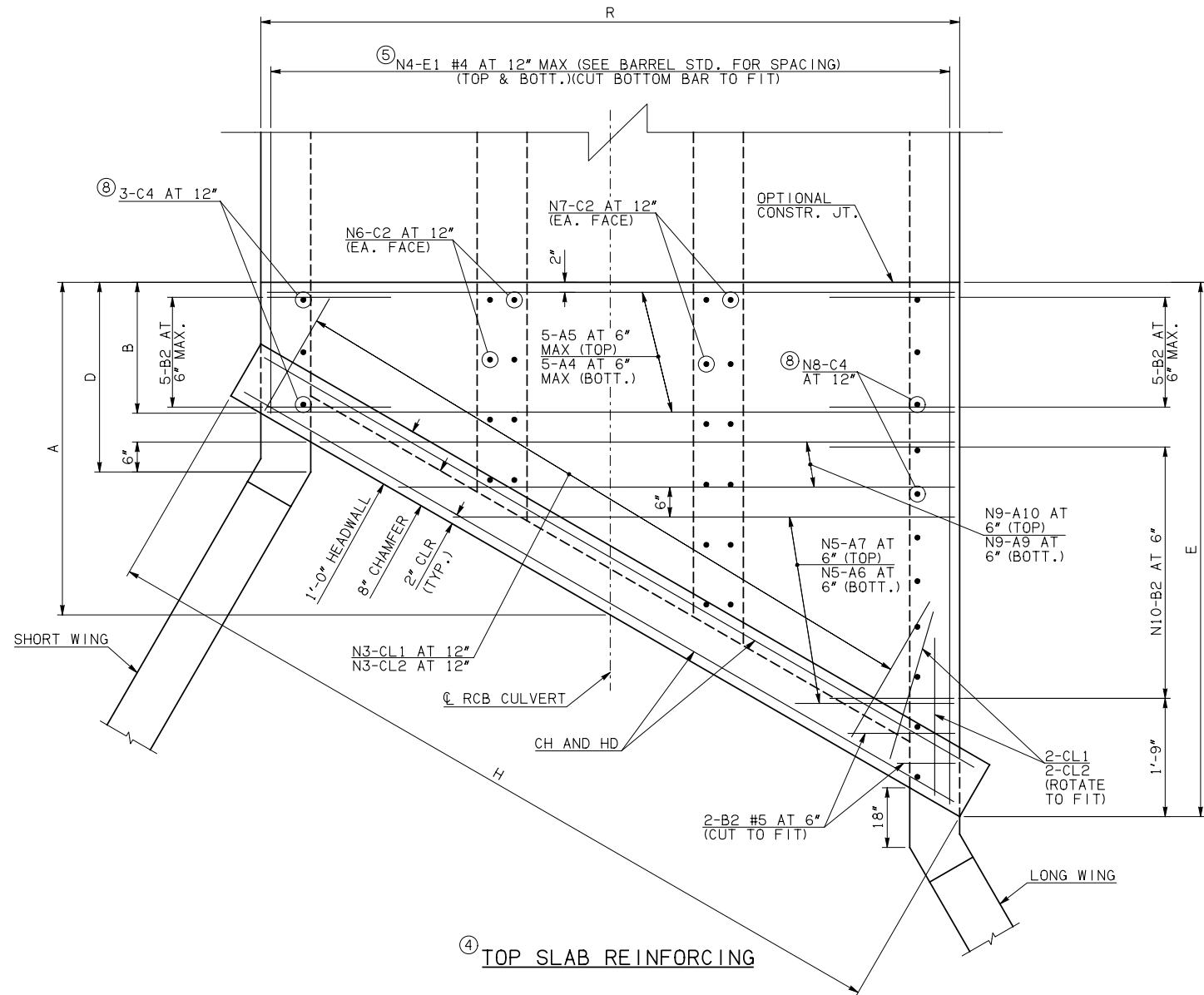


DESCRIPTION	REVISIONS	DATE

NOTE: SEE END SECTION DETAILS SHEET NO. 1 OF 3 FOR VARIABLE DIMENSIONS.



END SECTION REINFORCING QUANTITIES

SPAN	N1	N2	N3	N4	N5	N6	N7	N8	N9	N10
12'	29	9	45	44	43	9	17	27	0	43
14'	33	5	52	50	50	11	20	30	0	50
16'	4	34	59	56	57	12	22	34	0	57
18'	8	30	66	62	64	13	24	37	0	64
20'	12	26	73	68	67	14	26	41	4	71

END CONNECTION BAR LIST
(VARIABLE QUANTITIES AND LENGTHS)

ONE END CONNECTION SHOWN

MARK	FORM	12' SPAN				14' SPAN				16' SPAN				18' SPAN				20' SPAN			
		SIZE	QTY.	LENGTH	REMARKS	SIZE	QTY.	LENGTH	REMARKS	SIZE	QTY.	LENGTH	REMARKS	SIZE	QTY.	LENGTH	REMARKS	SIZE	QTY.	LENGTH	REMARKS
A4	STR	#6	10	39'-8"		#7	10	45'-8"		#7	10	51'-10"		#8	10	58'-0"		#8	10	70'-0"	⑨
A5	STR	#8	10	39'-8"		#8	10	45'-8"		#8	10	51'-10"		#9	10	58'-0"		#9	10	70'-0"	⑨
A6	STR	#7	43	19'-6 1/2" AVG.	1'-4" TO 37'-9"	#7	50	22'-6 1/2" AVG.	1'-4" TO 43'-9"	#8	57	25'-7" AVG.	1'-4" TO 49'-10"	#9	64	28'-7 1/2" AVG.	1'-4" TO 55'-11"	#9	67	29'-11" AVG.	1'-4" TO 58'-6"
A7	STR	#9	86	20'-8" AVG.	2'-6" TO 38'-10"	#9	100	23'-8 1/2" AVG.	2'-6" TO 44'-11"	#9	114	26'-9" AVG.	2'-6" TO 51'-0"	#10	128	29'-9 1/2" AVG.	2'-6" TO 57'-1"	#10	134	31'-1" AVG.	2'-6" TO 59'-8"
A8	STR	#7	43	20'-8" AVG.	2'-6" TO 38'-10"	#7	50	23'-8 1/2" AVG.	2'-6" TO 44'-11"	#8	57	26'-9" AVG.	2'-6" TO 51'-0"	#9	64	29'-9 1/2" AVG.	2'-6" TO 57'-1"	#9	67	31'-1" AVG.	2'-6" TO 59'-8"
A9	STR		0				0				0				0			#10	8	67'-7 1/2" AVG.	66'-4" TO 68'-11" ⑨
A10	STR		0				0				0				0			#9	8	67'-7 1/2" AVG.	66'-4" TO 68'-11" ⑨
B1	BNT	#6	55	5'-11"		#6	62	5'-3"		#6	69	5'-8"		#6	76	6'-2"		#6	83	6'-7"	
B2	BNT	#6	55	14'-11"		#6	62	14'-3"		#6	69	14'-7"		#6	76	15'-1"		#6	83	15'-6"	
C1	STR	#4	52	2'-3"		#4	62	2'-5"		#4	68	2'-5"		#4	74	2'-6"		#4	80	2'-8"	
C2	STR	#4	52	11'-11"		#4	62	12'-1"		#4	68	12'-1"		#4	74	12'-2"		#4	80	12'-4"	
C3	STR	#5	30	2'-7"		#5	33	2'-9"		#5	37	2'-9"		#5	40	2'-10"		#5	44	3'-0"	
C4	STR	#5	30	11'-11"		#5	33	12'-1"		#5	37	12'-1"		#5	40	12'-2"		#5	44	12'-4"	
E1	STR	#4	176	13'-9 1/2" AVG.	2'-4" TO 25'-3"	#4	200	15'-9" AVG.	2'-7" TO 28'-11"	#4	224	17'-9 1/2" AVG.	2'-10" TO 32'-9"	#4	248	18'-9" AVG.	2'-0" TO 35'-6"	#4	272	20'-9" AVG.	2'-3" TO 39'-3"
E2	STR	#4	88	13'-2 1/2" AVG.	2'-4", 9'-1", 16'-7", 24'-10"	#4	88	15'-2 1/2" AVG.	2'-7", 10'-6", 19'-2", 28'-7"	#4	88	17'-2 1/2" AVG.	2'-10", 11'-11", 21'-9", 32'-4"	#4	88	18'-2" AVG.	2'-0", 12'-4", 23'-3", 35'-0"	#4	88	20'-2" AVG.	2'-3", 13'-9", 25'-10", 38'-9"

QUANTITIES

ITEM	UNIT	12' SPAN	14' SPAN	16' SPAN	18' SPAN	20' SPAN
CLASS AA CONCRETE	CY	233.30	271.90	307.80	345.60	403.90
REINFORCING STEEL	LB	34530.00	40110.00	48530.00	62400.00	72310.00

NOTE: QUANTITIES ABOVE ARE FOR ONE END SECTION, WHICH IS COMPRISED OF ONE END CONNECTION, ONE HEADWALL, ONE APRON, AND TWO WINGWALLS.

- NOTES: ③ QUANTITY SHOWN REPRESENTS TWO SETS.
 ④ FOR FURTHER INFORMATION REGARDING END SECTION A, B, C, AND E BARS REFER TO RCB CULVERT - BARREL DETAILS.
 ⑤ LENGTHS OF E1 & E2 BARS SHOWN ARE ADDITIONAL LENGTHS REQUIRED FOR THE END SECTION. LAP SPLICES, AS REQUIRED, SHALL BE IN ACCORDANCE WITH RCB BARREL STANDARD NOTES.
 ⑥ 4-SETS OF N4-E1 BARS REQUIRED
 ⑦ 4-SETS OF 22-E2 BARS REQUIRED WITH LENGTHS AS SHOWN CORRESPONDING TO SHORT EXTERIOR WALL, INTERIOR WALLS, AND LONG EXTERIOR WALL.
 ⑧ C3 AND C4 BAR SIZE AND SPACING MAY DIFFER FROM BARREL SECTION.
 ⑨ INCLUDES 5'-10" LAP.

APPROVED BY BRIDGE ENGINEER *Robert J. Nisch* DATE 4/09/09

OKLAHOMA DEPT. OF TRANSPORTATION
BRIDGE STANDARD (ENGLISH)
 RCB CULVERTS - END SECTION DETAILS
 TRIPLE CELL - 11'-0" HEIGHT - 30"
 SHEET NO. 2 OF 3

1999 SPECIFICATIONS RCB-E3-H11-30-2 OOE B-772E